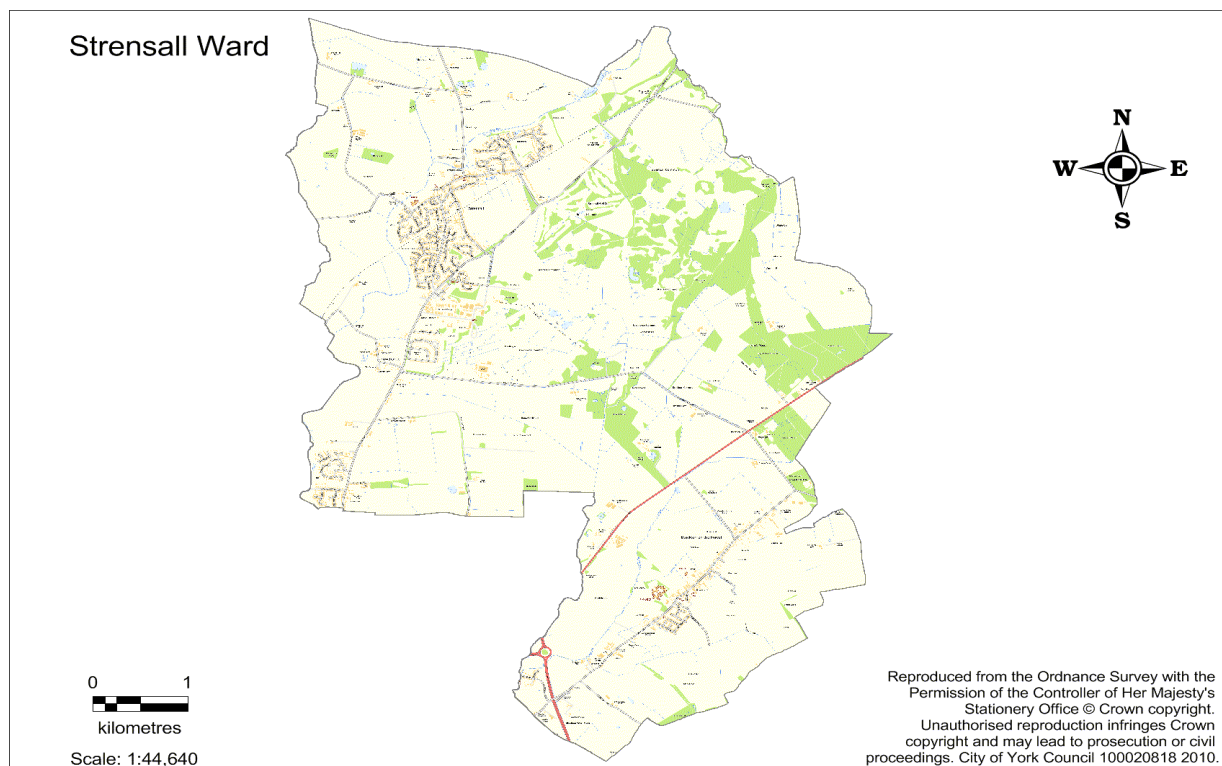


York Summary

- York has 209,893 residents with 5.7% from a black and minority ethnic community group. 83.9% are in good health, with 15.3% stating that they have some limitation in day to day activities.
- £691.90 was the Average Net Weekly Household Income in 2017/18 (£637.58 in 2015/16).
- 66% own their own home, either outright or with a mortgage, 18% are private renters and 14% are social tenants. There are 7,540 Council Houses in York.
- 73.5% of residents have a Level 1 - 4 qualification, of which 62.9% are, at least, qualified to Level 2, but 18.0% have no qualifications at all.
- 10.0% of children are in child poverty (7.7% of children live in a household where a parent or guardian claims an out-of-work benefit) and there are 8.9% of households in fuel poverty.
- 1.3% of the working population (aged 16-64) claim out of work benefits (either Job Seekers Allowance or Universal Credit)



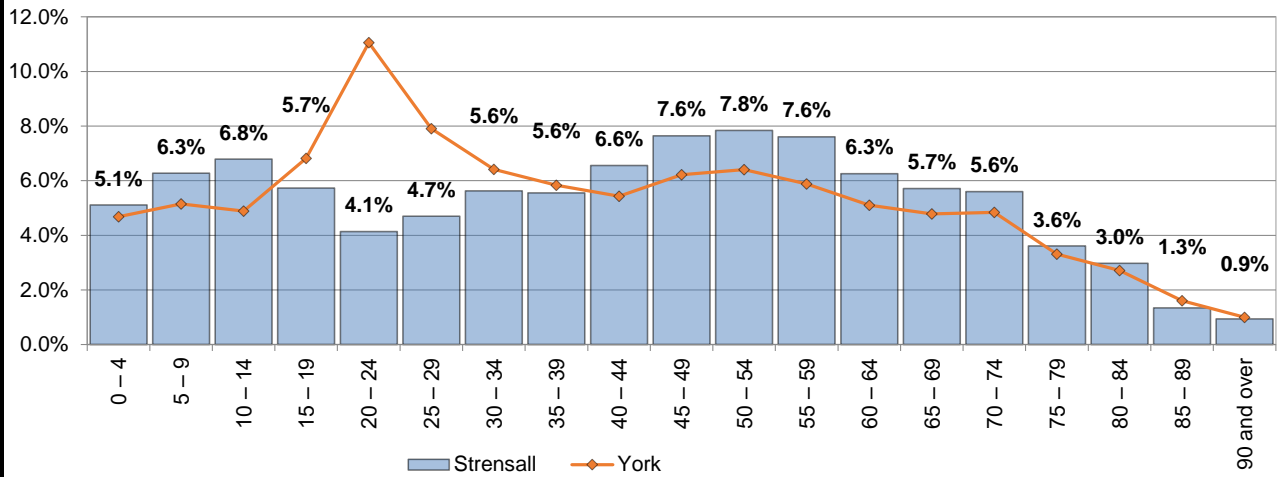
Ward Summary

- Strensall has 8,318 residents with 3.0% from a black and minority ethnic community group. 86.4% are in good health, with 13.4% stating that they have some limitation in day to day activities.
- £668.59 was the Average Net Weekly Household Income in 2017/18 (£642.63 in 2015/16).
- 80% own their own home, either outright or with a mortgage, 13% are private renters and 6% are social tenants. There are no Council Houses in this ward.
- 75.2% of residents have a Level 1 - 4 qualification, of which 63.1% are, at least, qualified to Level 2, but 16.3% have no qualifications at all.
- 3.0% of children are in child poverty (3.7% of children live in a household where a parent or guardian claims an out-of-work benefit) and there are 6.1% of households in fuel poverty.
- 0.8% of the working population (aged 16-64) claim out of work benefits (either Job Seekers Allowance or Universal Credit)

Ward performance by key areas								
This is an "at a glance" summary of performance within the ward - more detail is provided later in the profile.								
Strensall Ward		Best Ward in York	Worst Ward in York	York Ward Average	Performance (latest data)			
					Good	Area of concern	In Top 5 Wards	In Bottom 5 Wards
Economy					Above or below the average ± 10% Pages 8 - 9			
Universal Credit (out of work) claimants	0.80%	0.24%	2.70%	1.25%	●		●	
Residents who agree the council and its partners are helping to create jobs in the city	31.25%	72.73%	21.43%	39.50%		◆		◆
Residents who agree their skills and qualifications are suited to jobs available in York	54.55%	83.33%	36.36%	52.40%				
Business Startups:								
Number (YTD)	42.0	130.0	13.0	46.8		◆		
per 10,000 working age population (YTD)	83.6	140.9	22.4	77.8				
Poverty					Page 10			
Fuel poverty (households)	6.09%	6.00%	15.57%	8.71%	●		●	
Child poverty	3.00%	1.90%	20.20%	8.78%	●		●	
Health and Wellbeing					Pages 12 - 15			
Reception year obesity	9.80%	5.00%	14.50%	8.54%		◆		
Year 6 obesity	12.60%	8.00%	22.40%	15.21%	●			
Male life expectancy	80.4	86.6	76.5	80.5				
Female life expectancy	83.9	88.5	80.6	83.7				
Emergency hospital admissions for children (per 1,000 population)	191.1	138.9	209.6	174.8				◆
% with limiting long term illness or disability	13.40%	10.20%	21.10%	15.50%	●		●	
% of obese adults	25.00%	14.60%	28.70%	22.68%		◆		◆
Elective hospital admissions	101.0	76.0	116.5	99.8				
Emergency hospital admissions	93.3	80.6	127.3	99.2				
Emergency hospital admissions for injuries resulting from a fall (over 65)	21.4	15.5	37.9	25.8	●			
Adult Social Care					Pages 16 - 17			
Social Isolation	1.7	1.3	2.6	2.0	●		●	
Homecare hours (weekly average)	9.8	6.0	13.3	9.5				
Homecare clients (per 1,000 population)	3.8	1.5	11.0	4.8	●			
Clients getting paid packages of care that are not residential/nursing care	46.0	180.0	12.0	71.1				
New customers requesting Adult Social Care support	21.0	95.0	10.0	42.1				
People supported to live independently through social services:	48.0	178.0	17.0	73.0				
packages of care								
intervention	28.0	105.0	9.0	44.0				
Key: ● Good performance ◆ Area of concern								

This is an "at a glance" summary of performance within the ward - more detail is provided later in the profile.								
Ward		Best Ward in York	Worst Ward in York	York Ward Average	Performance (latest data)			
					Good	Area of concern	In Top 5 Wards	In Bottom 5 Wards
Public Realm Page 18 - 19								
Crime (per 1,000 population)	6.0	3.6	47.0	13.1	●			
ASB (per 1,000 population)	3.1	1.9	21.8	6.0	●			
Residents who think that hate crime is not a problem in their local area	93.75%	100.00%	60.00%	78.47%	●		●	
Residents who agree that York is a safe city to live in, relatively free from crime and violence	92.86%	100.00%	54.55%	79.19%	●		●	
Street cleaning - Number of issues reported - Litter	0.0	N/A	N/A	10.4				
Street cleaning - Number of issues reported - Faeces	4.0	N/A	N/A	8.0				
% of road area that is Free From Defects (Grade 1)	26.70%	44.46%	11.66%	24.62%				
% of road area that is Structurally Impaired (Grade 5)	10.21%	2.59%	10.21%	7.37%		◆		◆
Schools and Educational Attainment Page 20								
Primary school pupils claiming Free School Meals	3.69%	N/A	N/A	9.72%				
Secondary school pupils claiming Free School Meals	3.30%	N/A	N/A	8.58%				
Key Stage 2 Attainment	66.67%	89.29%	50.68%	69.13%				
Key Stage 4 Attainment	78.26%	100.00%	59.68%	75.83%				
Travel time (in minutes) by public transport / walking to nearest... Page 21								
GP	14.3	8.2	29.1	17.6	●			
Hospital	40.8	12.9	58.9	34.8		◆		
Primary school	13.0	6.3	13.0	9.1		◆		◆
Secondary school	26.1	9.1	33.4	18.8		◆		◆
Broadband coverage and speeds Page 22								
Average download speed (Mb/s)	38.4	76.8	32.1	54.6		◆		◆
Superfast availability	91.21%	100.00%	79.36%	94.34%				
Resident Engagement Pages 22 - 23								
Residents satisfied with their local area as a place to live	82.35%	100.00%	60.00%	84.95%				
Residents who agree that they belong to their local area	93.33%	95.83%	63.64%	78.36%	●		●	
Residents agree their local area is a good place for children and young people to grow up	87.50%	100.00%	46.67%	76.98%	●			
Residents who agree that they can influence decisions in their local area	25.00%	50.00%	6.67%	28.21%		◆		
Key: ● Good performance ◆ Area of concern								
Further information about the ward is available at:					Strensall Ward			

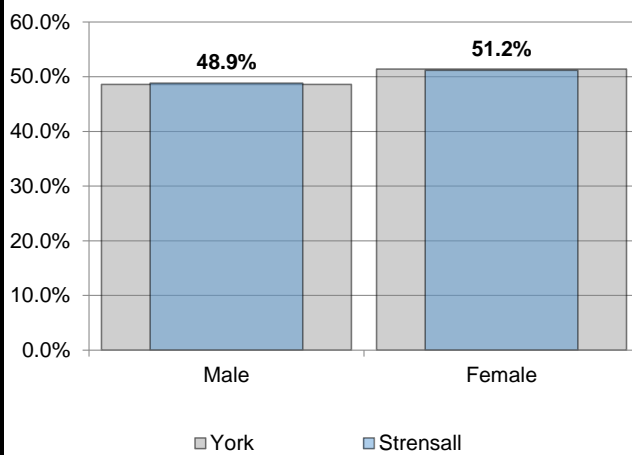
Population by Age



Source: ONS - 2018 Ward population estimates

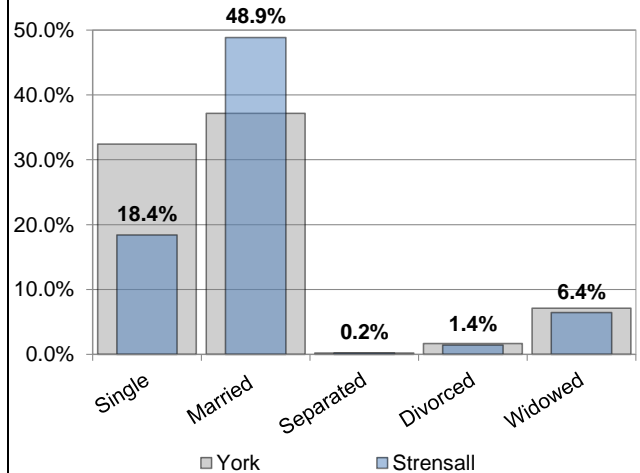
Census 2011 Update

Gender



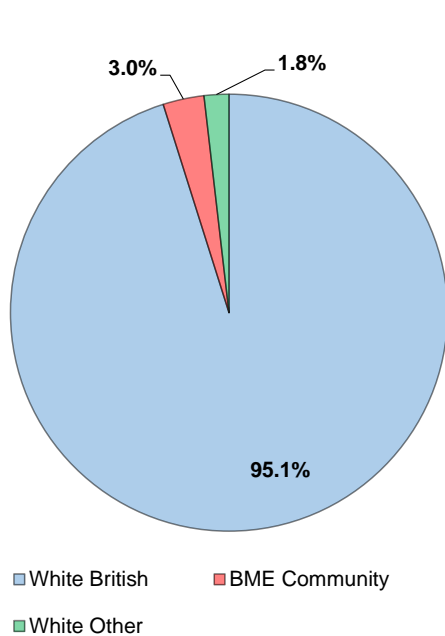
Source: Census 2011

Marital Status

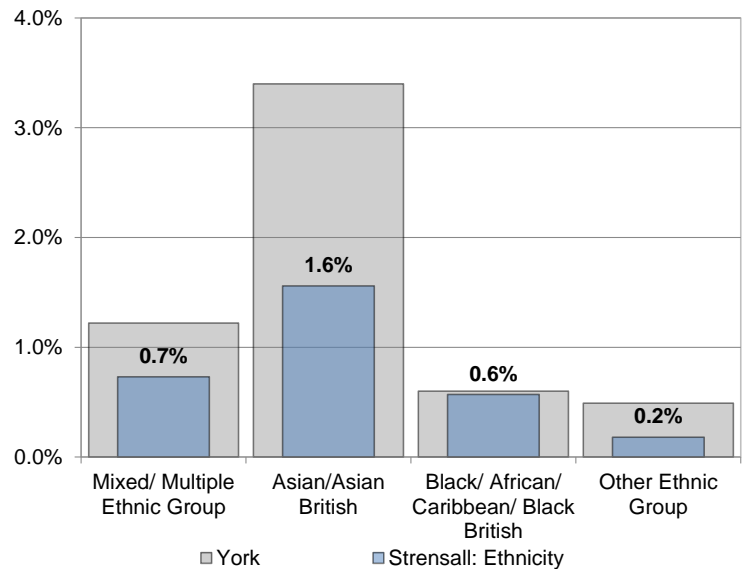


Source: Census 2011

Ethnicity



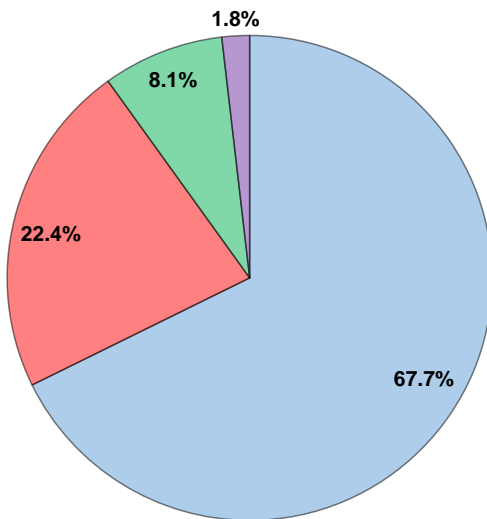
BME Community (does not include White British or White Other)



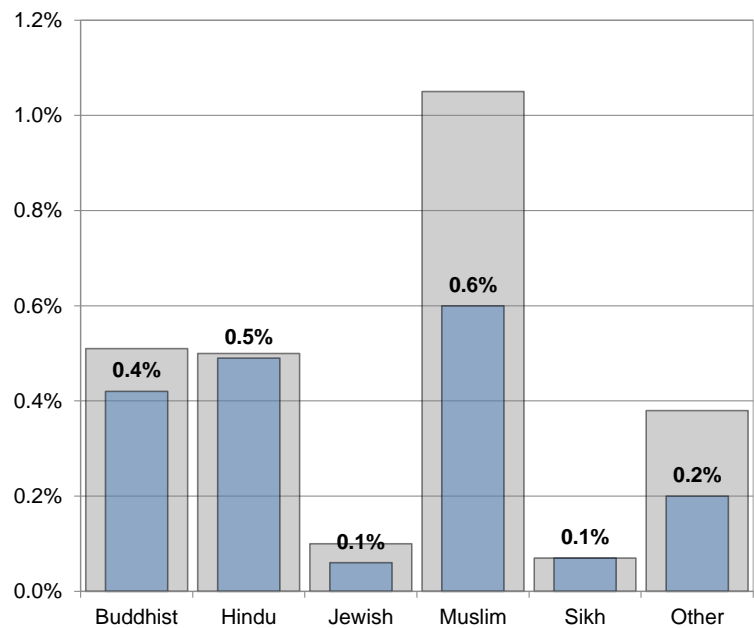
Source: Census 2011

Religion

Other Religions



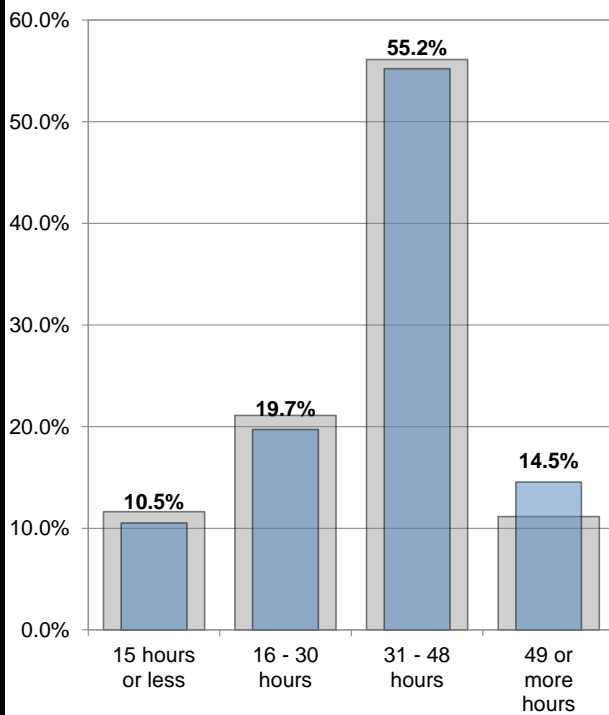
■ Christian
 ■ None
 ■ Not stated
 ■ Other Religions



■ York
 ■ Strensall

Source: Census 2011

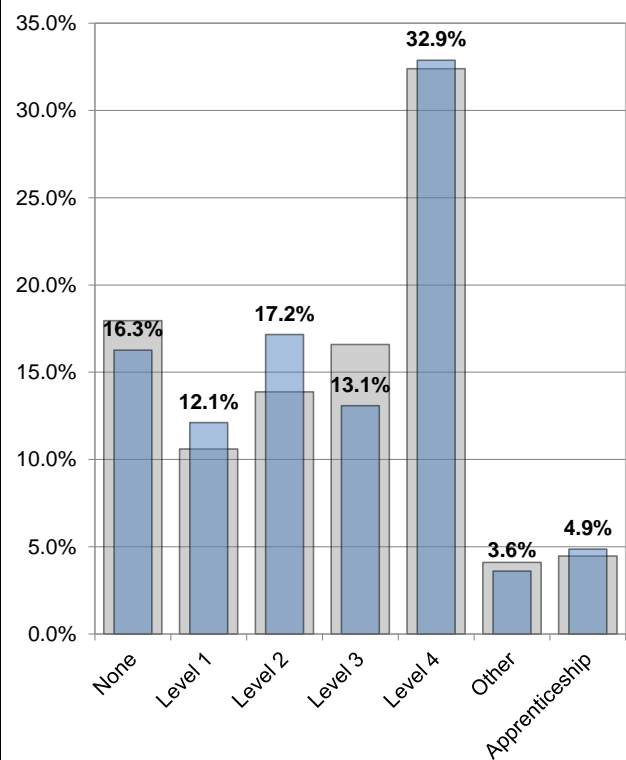
Hours Worked



■ York
 ■ Strensall

Source: Census 2011

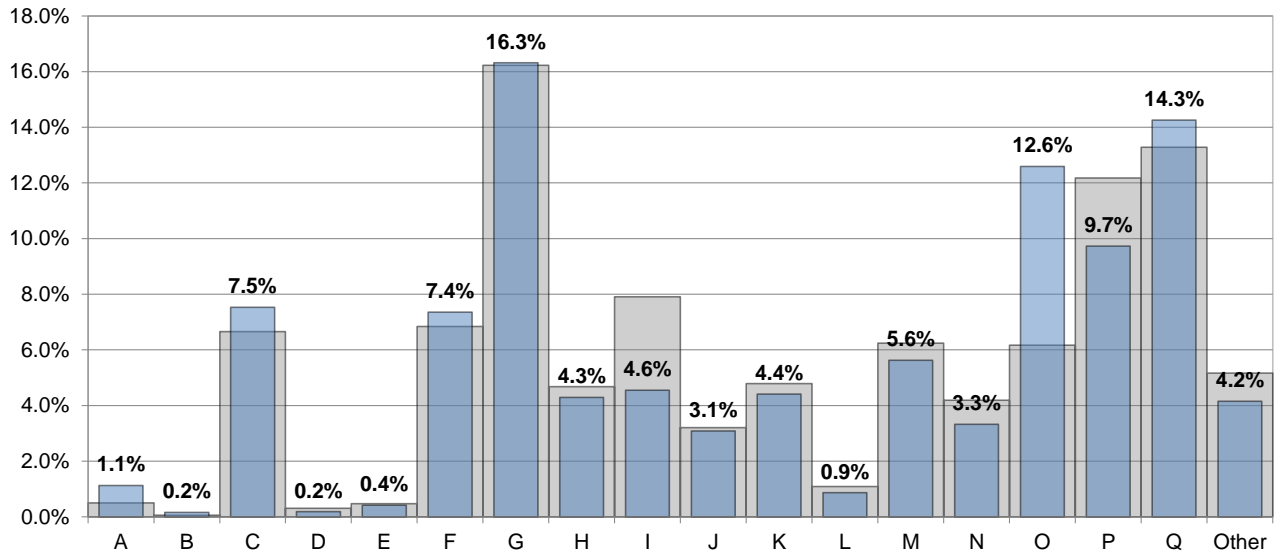
Qualifications



■ York
 ■ Strensall

Source: Census 2011

Industry



A: Agriculture, forestry and fishing, B: Mining and quarrying, C: Manufacturing, D: Electricity, gas, steam and air conditioning supply, E: Water supply; sewerage, waste management and remediation activities, F: Construction

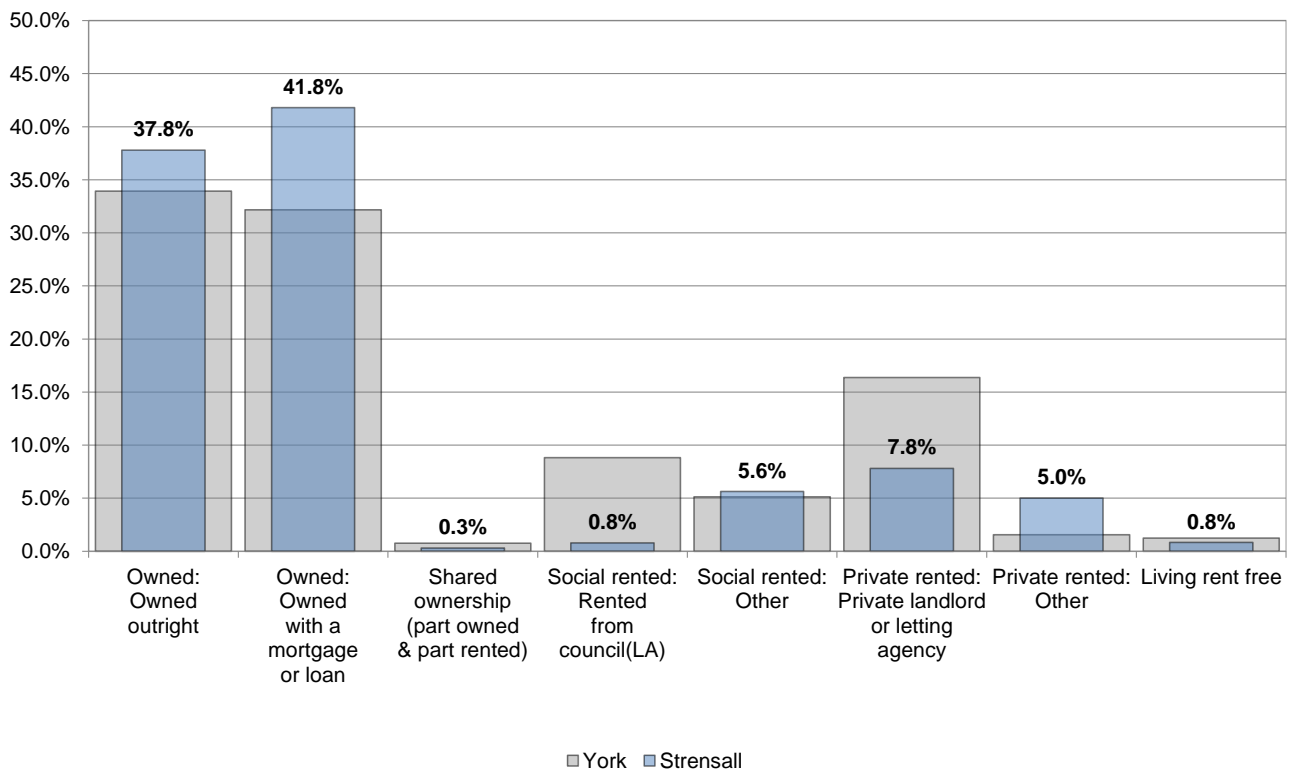
G: Wholesale and retail trade; repair of motor vehicles and motor cycles, H: Transport and storage, I: Accommodation and food service activities, J: Information and communication, K: Financial and insurance activities, L: Real estate activities

M: Professional, scientific and technical activities, N: Administrative and support service activities, O: Public administration and defence; compulsory social security, P: Education, Q: Human health and social work activities

■ York ■ Strensall

Source: Census 2011

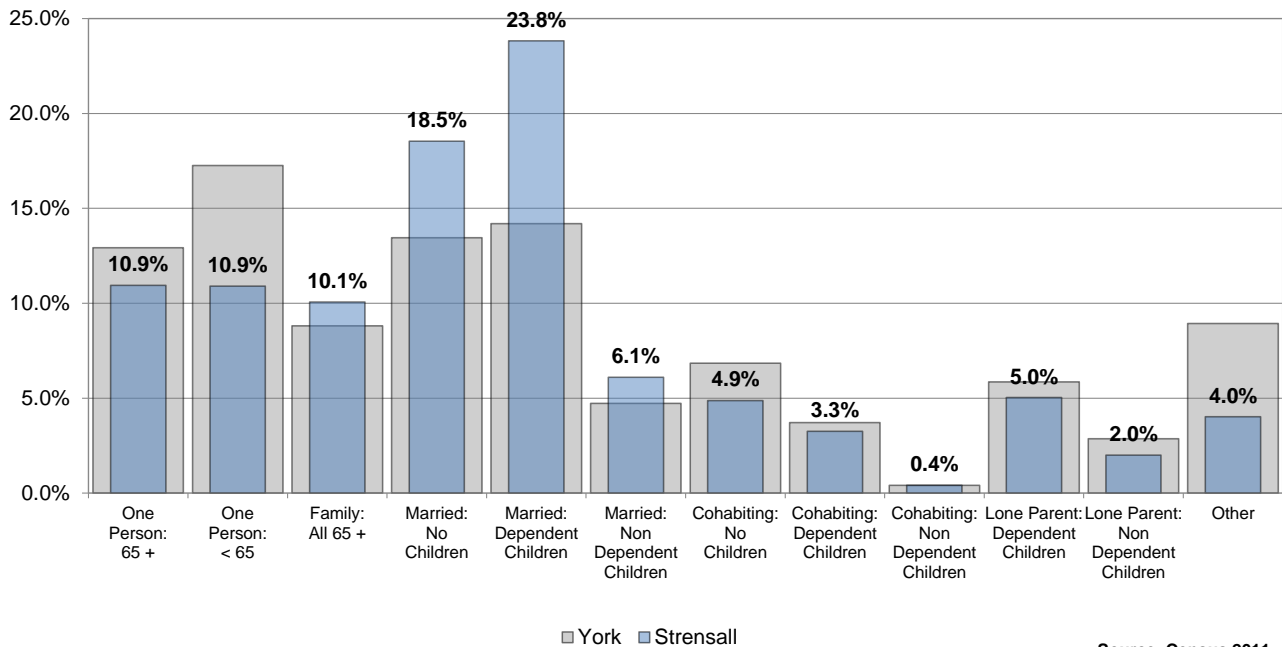
Tenure



■ York ■ Strensall

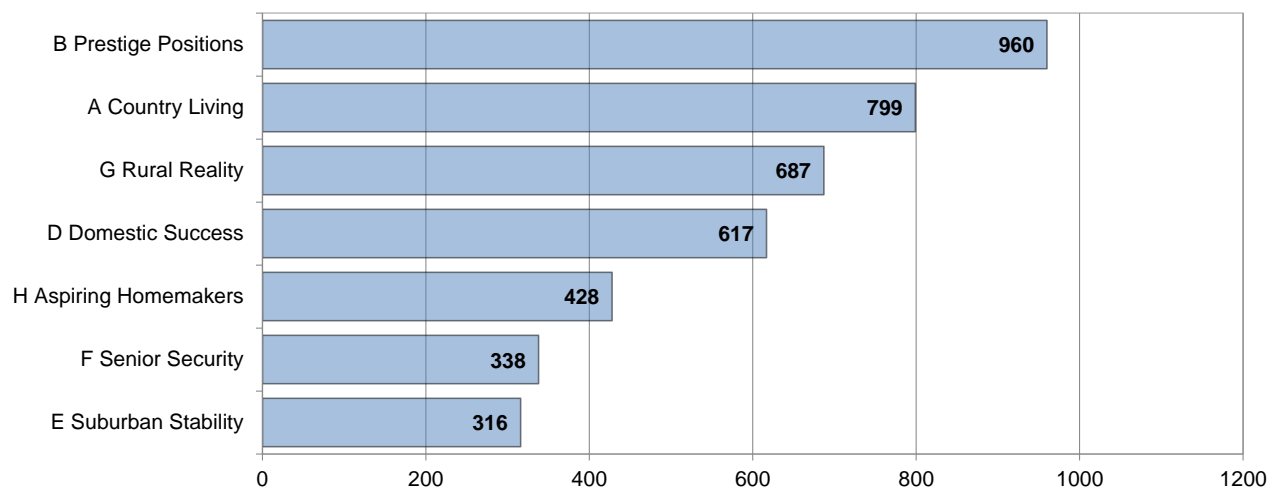
Source: Census 2011

Household Composition

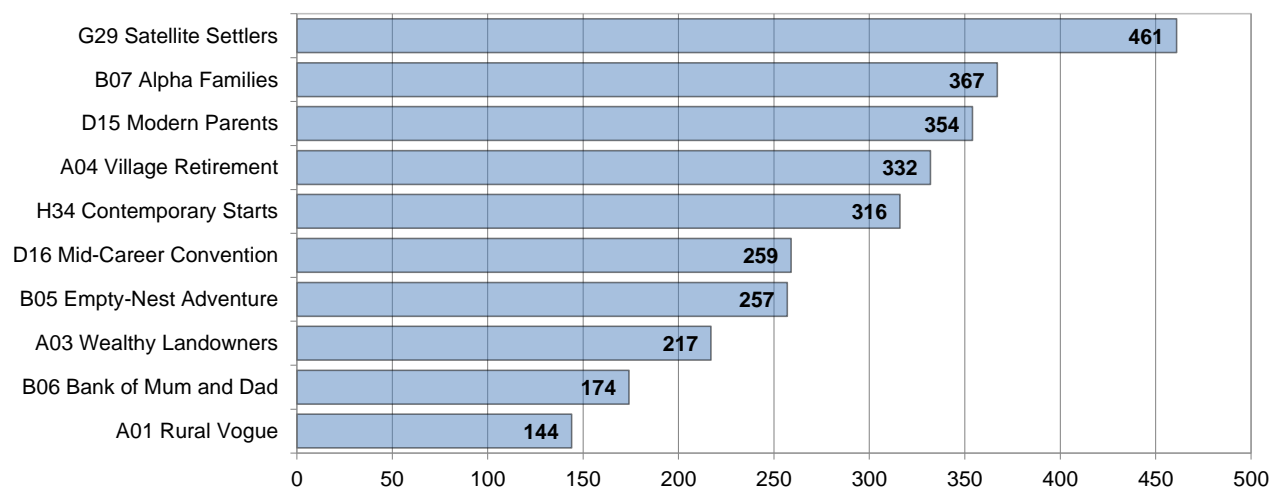


Household Types

Experian Groups (2019)

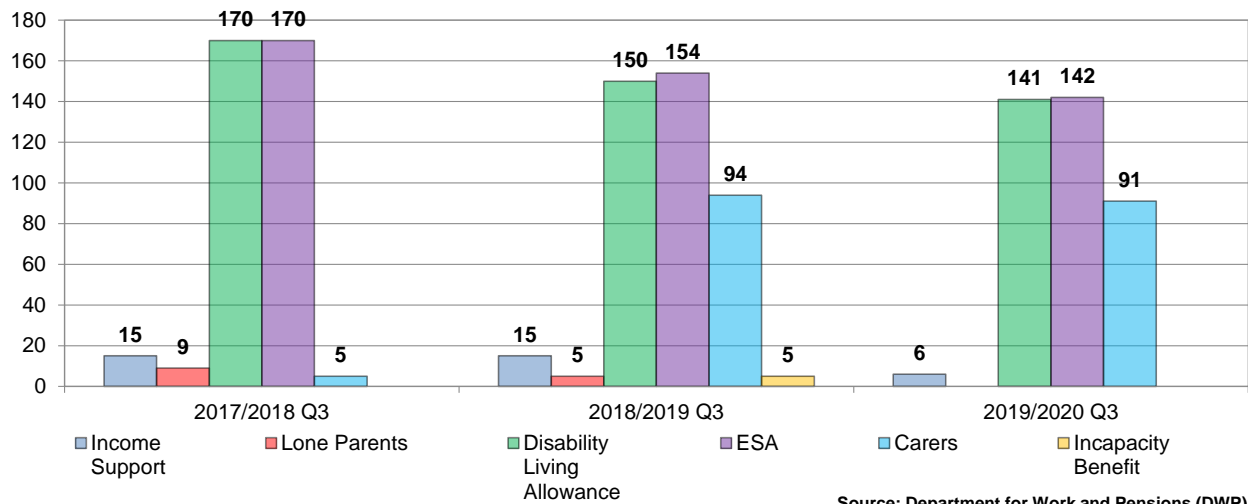


Experian Types (2019)



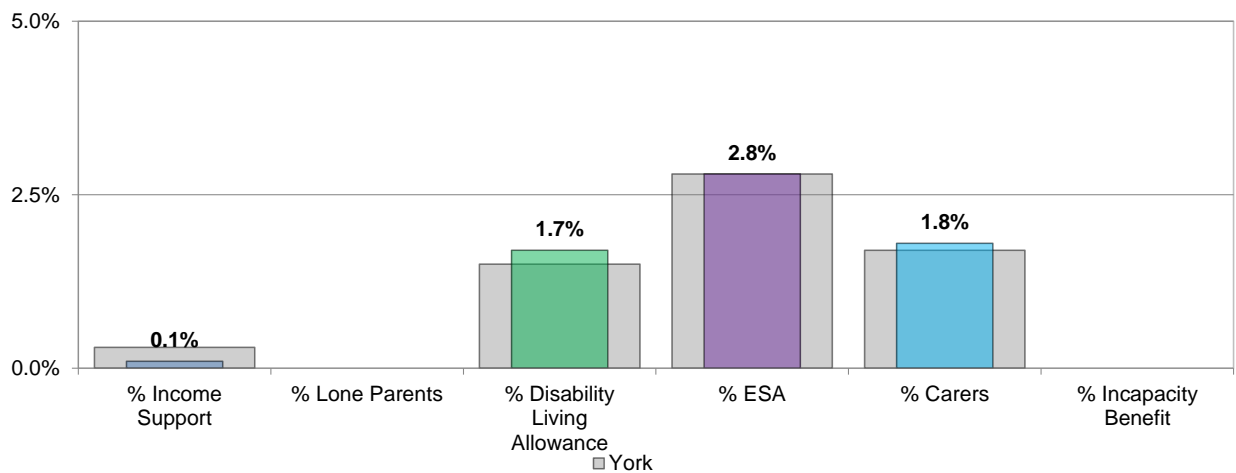
Economy

**Benefit Claimant Numbers
Working age Population (16-64)**

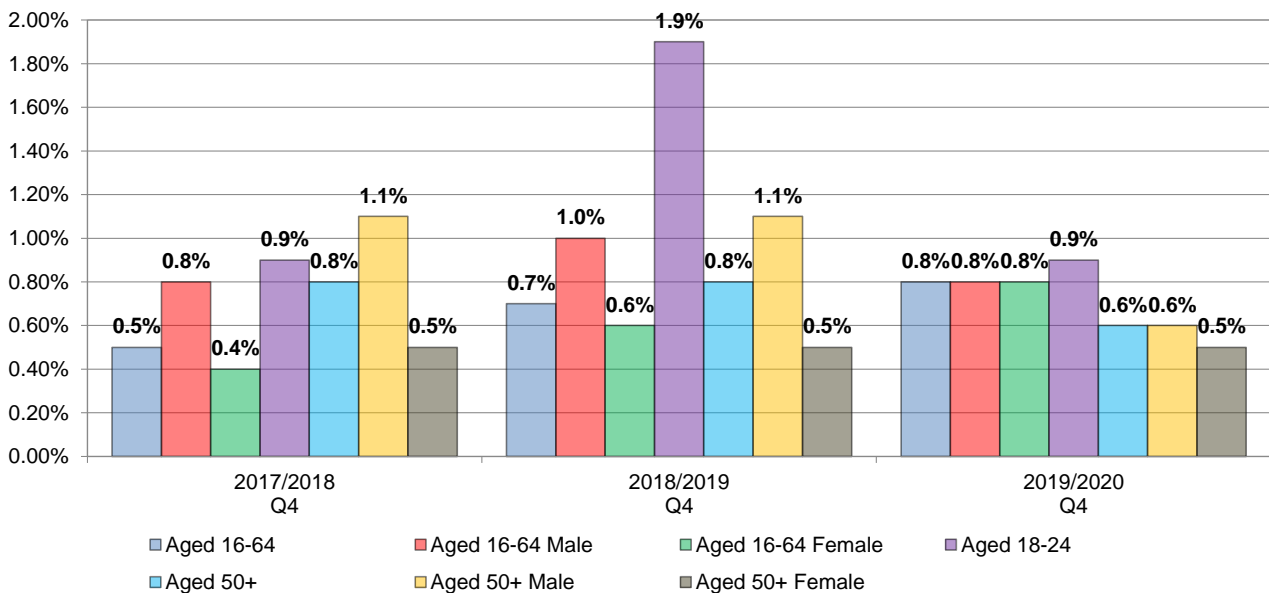


**Benefit Claimant Rate
Working age Population (16-64)**

Q3 2019/2020

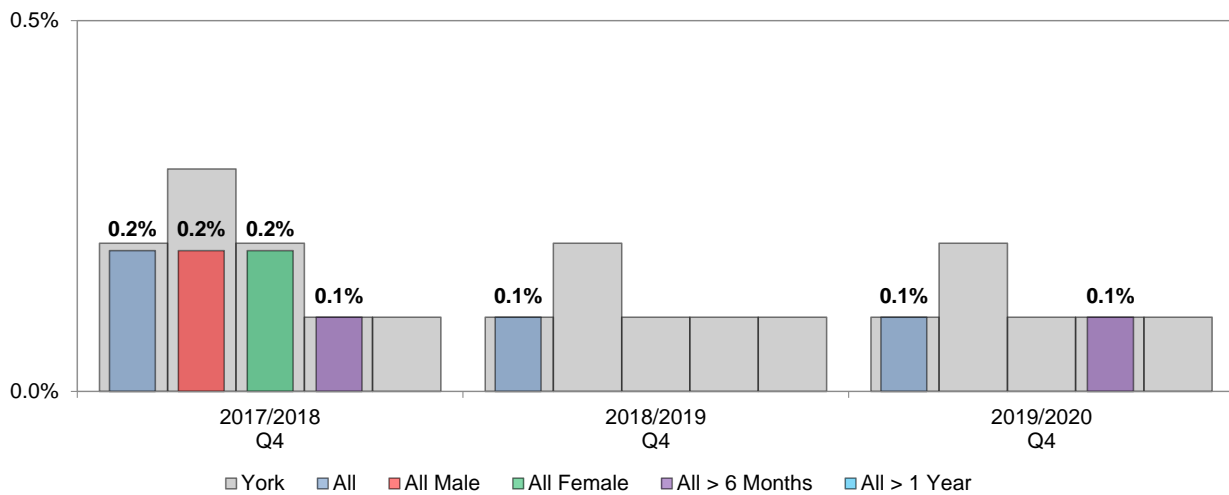


JSA and Universal Credit (out of work) Claimant Rate



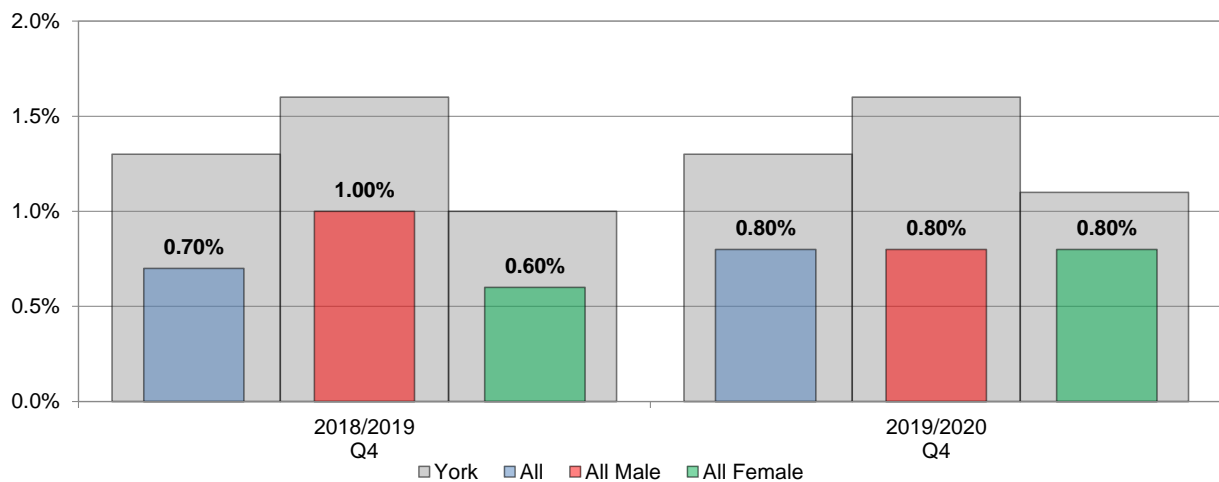
Economy

JSA Claimant Rate (Age and Gender) Working age Population (16-64)



Source: Office for National Statistics (ONS)

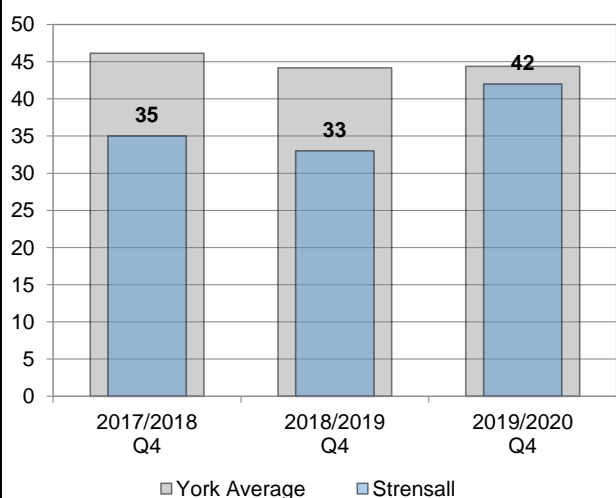
JSA and Universal Credit (out of work) Claimant Rate Working age Population (16-64)



Source: Office for National Statistics (ONS)

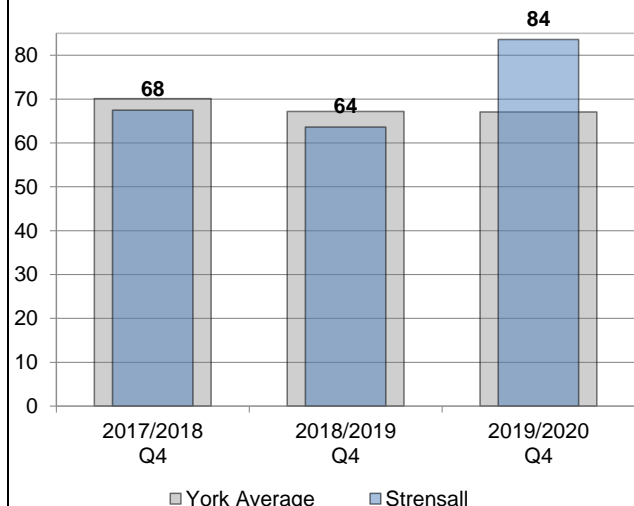
Business Start Ups

Numbers (YTD)



BankSearch Information Consultancy Ltd

per 10,000 working age population (YTD)

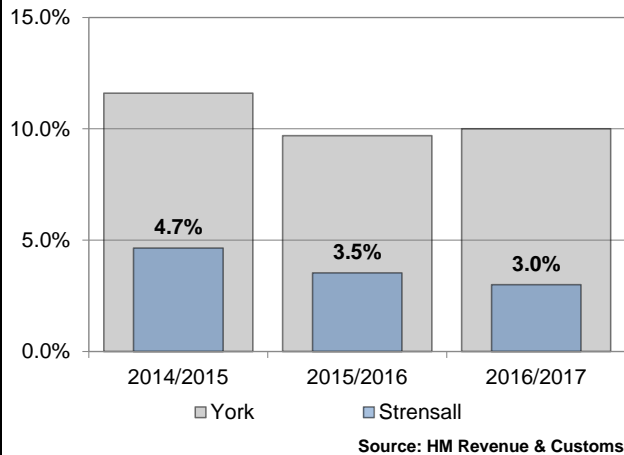


BankSearch Information Consultancy Ltd

Poverty

Child Poverty

The proportion of children living in families in receipt of out-of-work (means-tested) benefits or in receipt of tax credits where their reported income is less than 60 per cent of UK median income

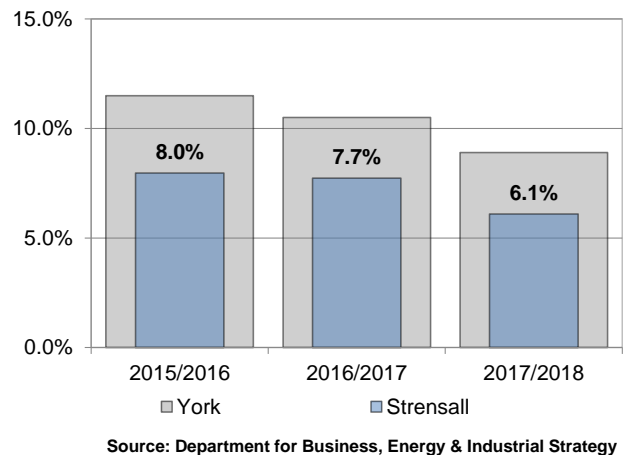


Fuel Poverty

The Low Income High Costs indicator is a twin indicator consisting of:

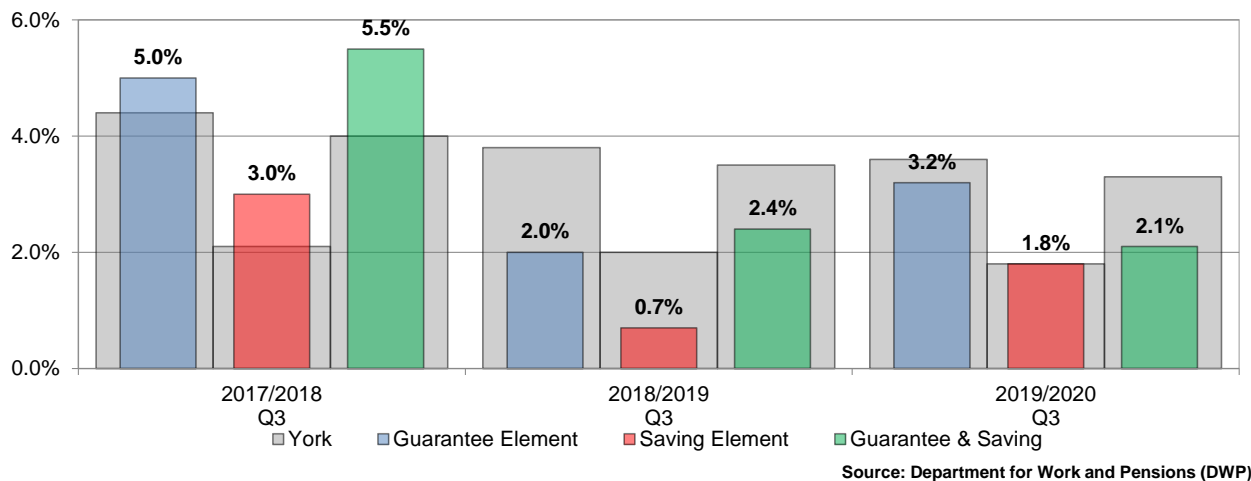
- the number of households that have both low incomes and high fuel costs; and
- the depth of fuel poverty amongst these fuel poor households.

This is measured through a fuel poverty gap which represents the difference between the required fuel costs for each household and the median required fuel costs.



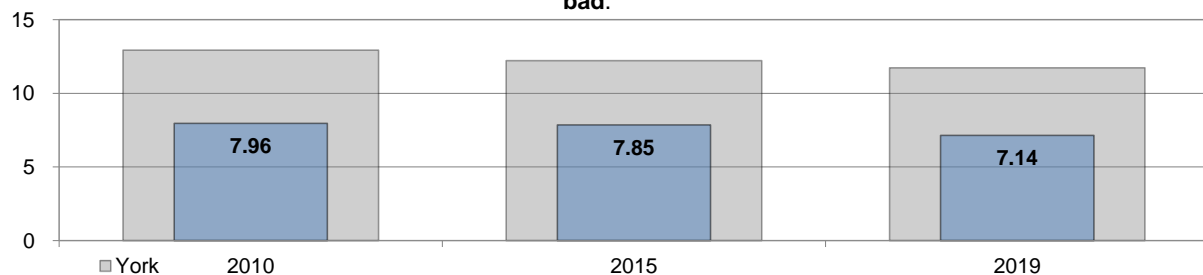
Pension Credit

Pension Credit is an income-related benefit made up of 2 parts - Guarantee Credit and Savings Credit.



Indices of Multiple Deprivation

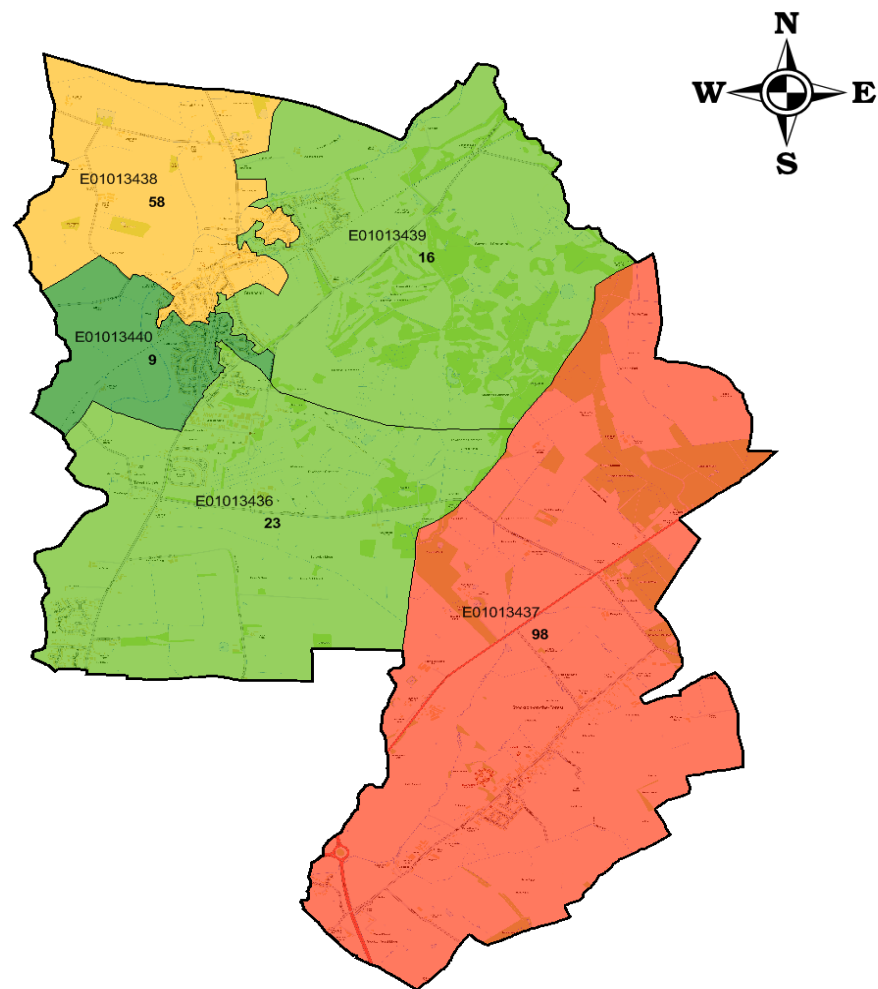
The IMD measures and rates a number of different domains affecting quality of life including income, employment, education and skills, health and disability, crime, barriers to services and quality of living environments. **A high score is bad.**



Ward Rank in York (Low is Bad)		
13 out of 21	12 out of 21	13 out of 21

Source: Department for Communities and Local Government (DCLG)

Index of Multiple Deprivation 2019 Strensall Ward: breakdown by LSOA



Key to Index of Multiple Deprivation Deciles 2019
1 is least deprived; 120 is most deprived

Decile 10 Most Deprived	Decile 5
Decile 9	Decile 4
Decile 8	Decile 3
Decile 7	Decile 2
Decile 6	Decile 1 Least Deprived

0 1.698
kilometres

Scale: 1:48,170

Produced by

Business Intelligence Hub

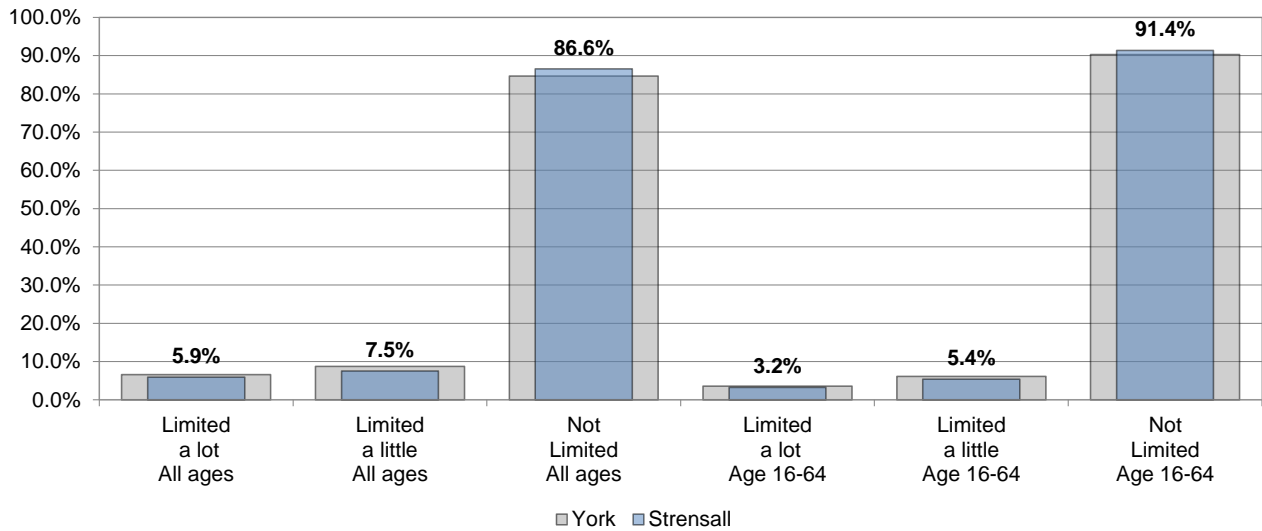
Created

03/10/2019

Reproduced from the Ordnance Survey with the
Permission of the Controller of Her Majesty's
Stationery Office © Crown copyright.
Unauthorised reproduction infringes Crown
copyright and may lead to prosecution or civil
proceedings. City of York Council 100020818 2010.

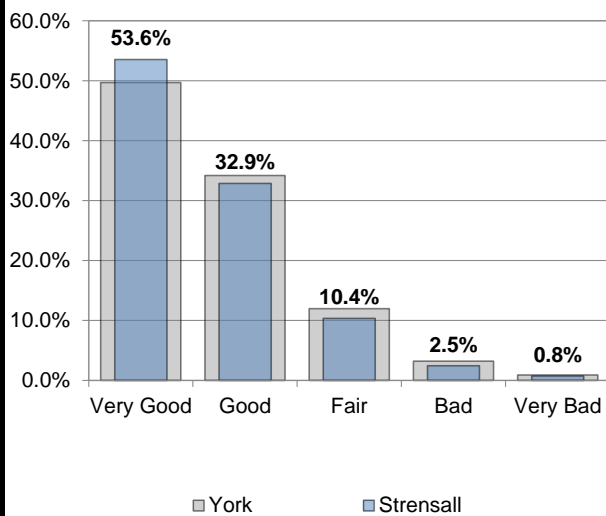
Health and Wellbeing

Day to Day Activities



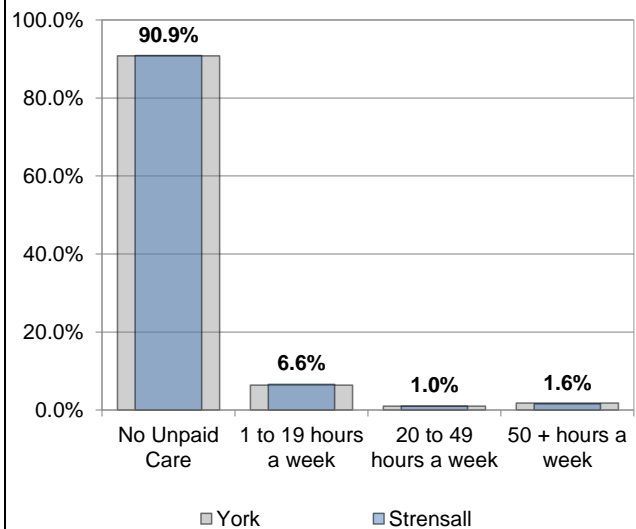
Source: Census 2011

General Health



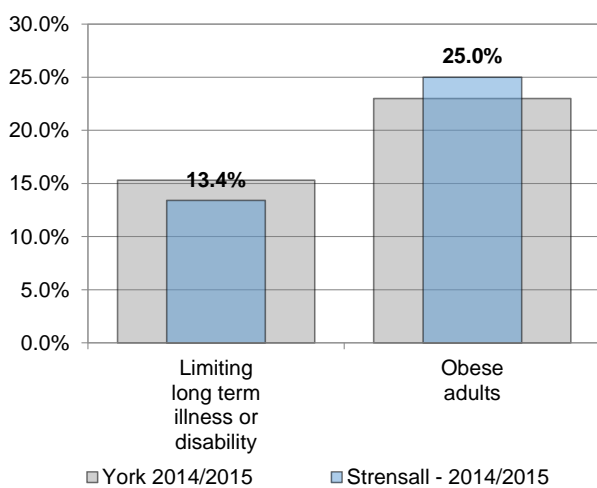
Source: Census 2011

Provide Unpaid Care



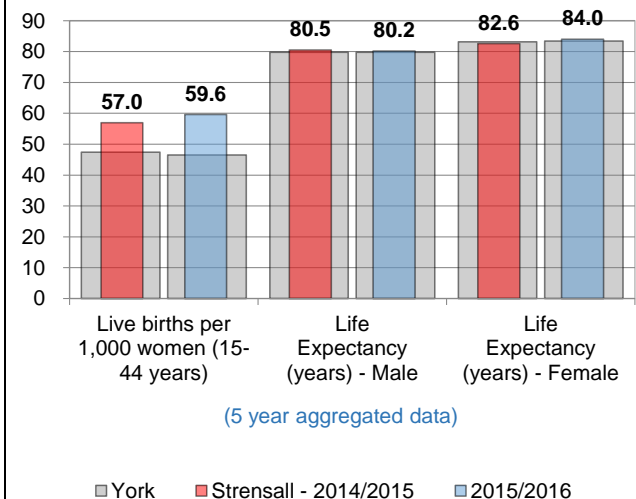
Source: Census 2011

Adult Health & Lifestyle



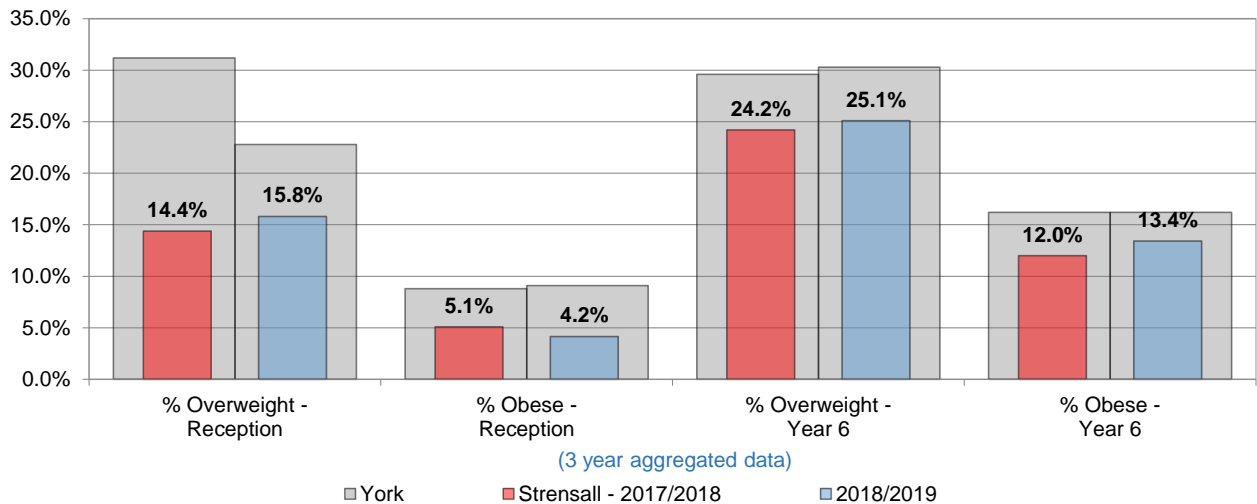
Source: Public Health England

Fertility and Life Expectancy



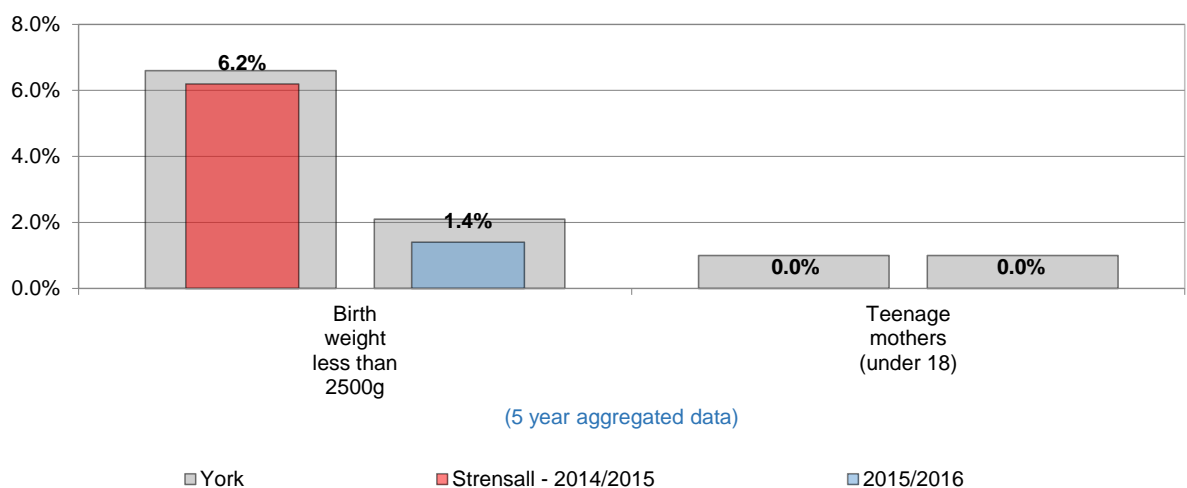
Source: Public Health England

Childhood weight



Source: Public Health England

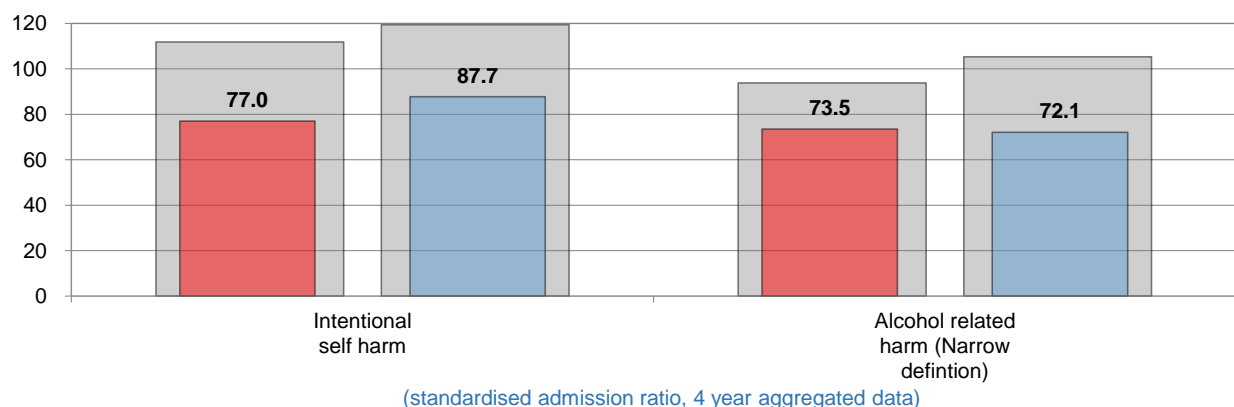
Births



Source: Public Health England

Hospital Admissions

Hospital Admissions, All ages

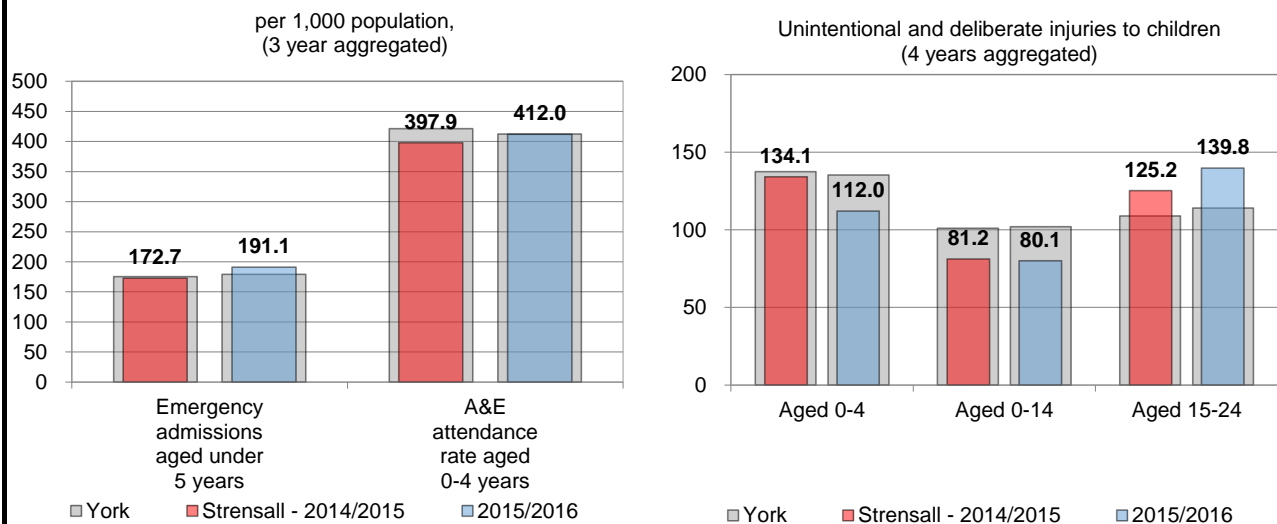


The Standardised Admission Ratio (SAR) is a summary estimate of admission rates relative to the national pattern of admissions and takes into account differences in a population's age, sex and socioeconomic deprivation. The National value is 100.

York Strensall - 2015/2016 2017/2018

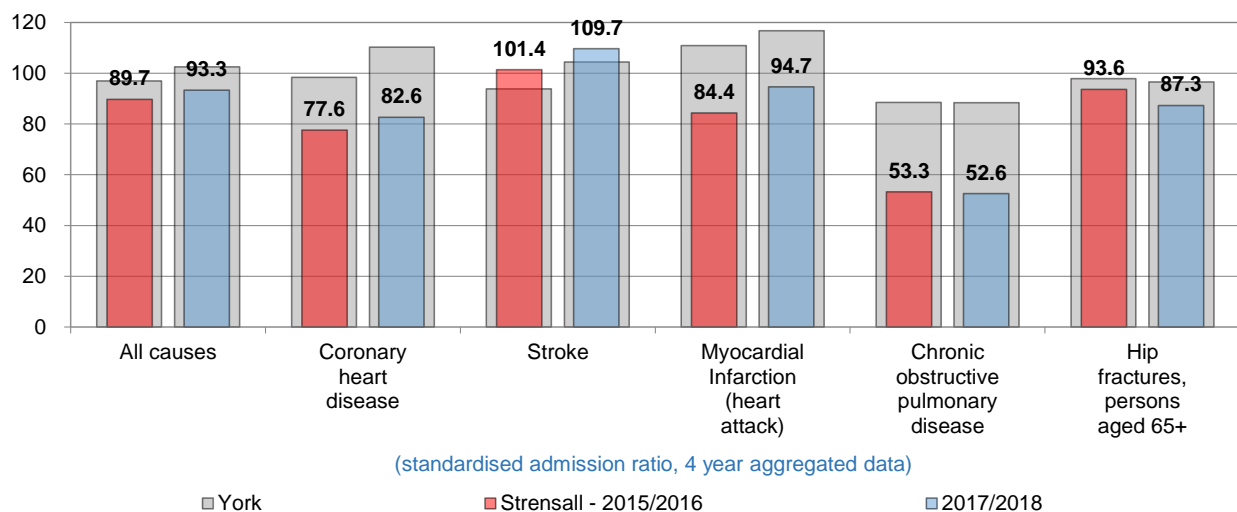
Source: Public Health England

Hospital Admissions - Children & Young People



Source: Public Health England

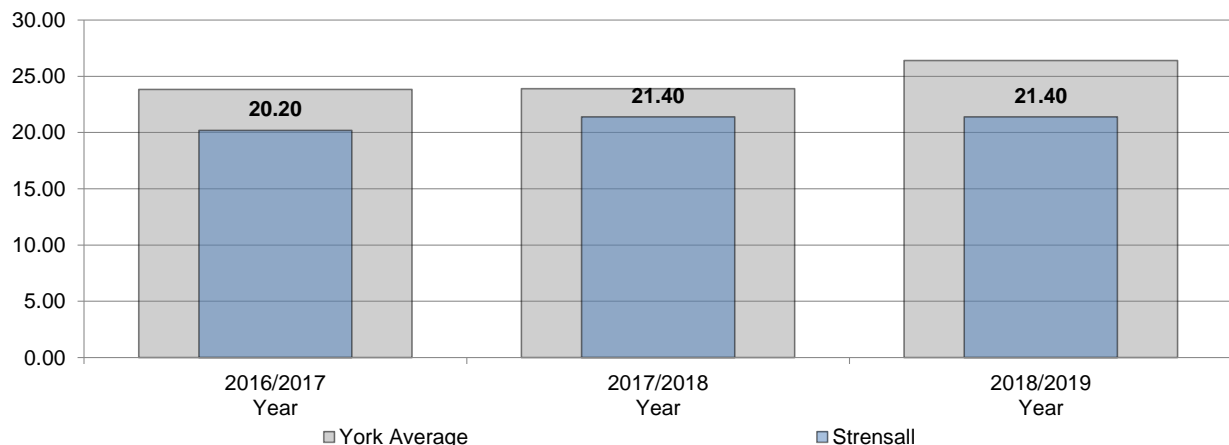
Emergency hospital admissions



Source: Public Health England

Emergency hospital admissions for injuries resulting from a fall (over 65), per 1,000 population

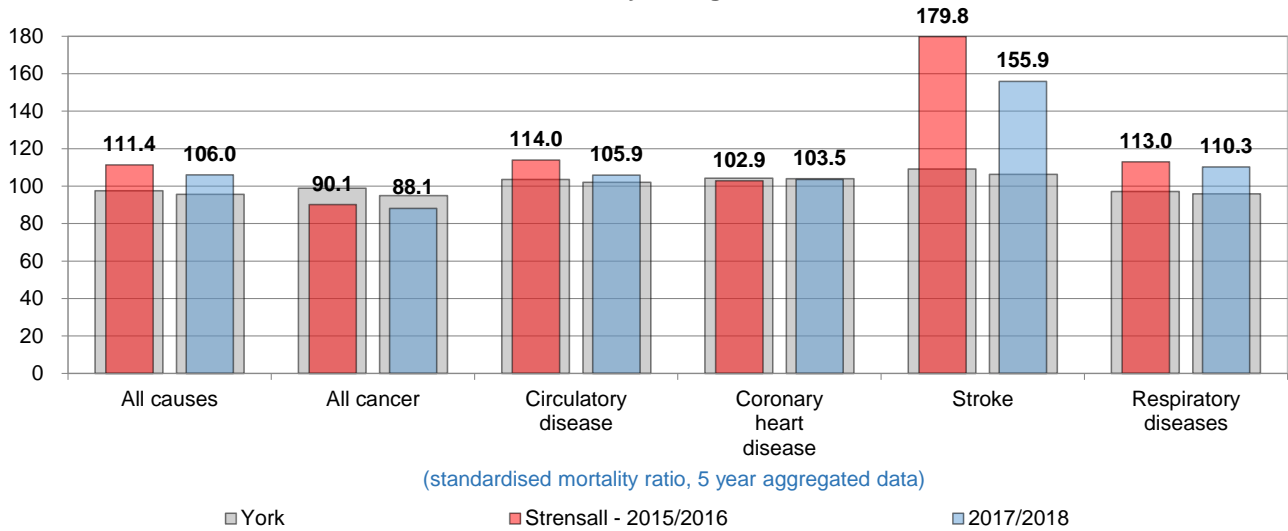
Falls data: the figures given here are taken from Hospital Episode Statistics data, which takes the number of those aged 65 or over being admitted to hospital on a non-elective basis at least once in each year as a result of a fall and divides it by the number of those of that age group resident in each ward to give a rate per 1,000 population.



Source: Hospital Episode Statistics data

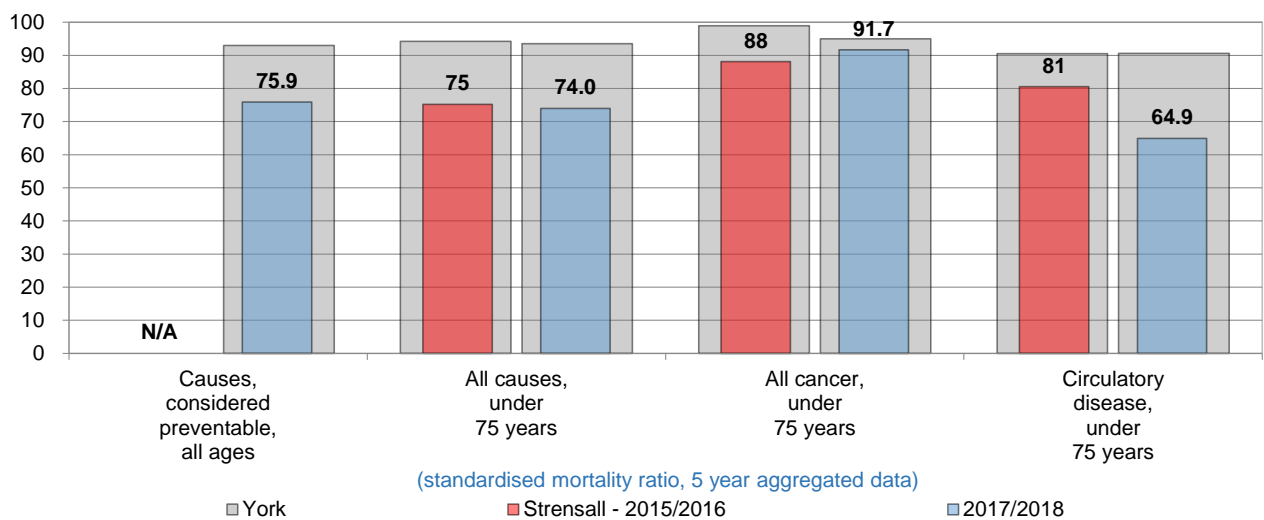
Mortality

Mortality, All ages



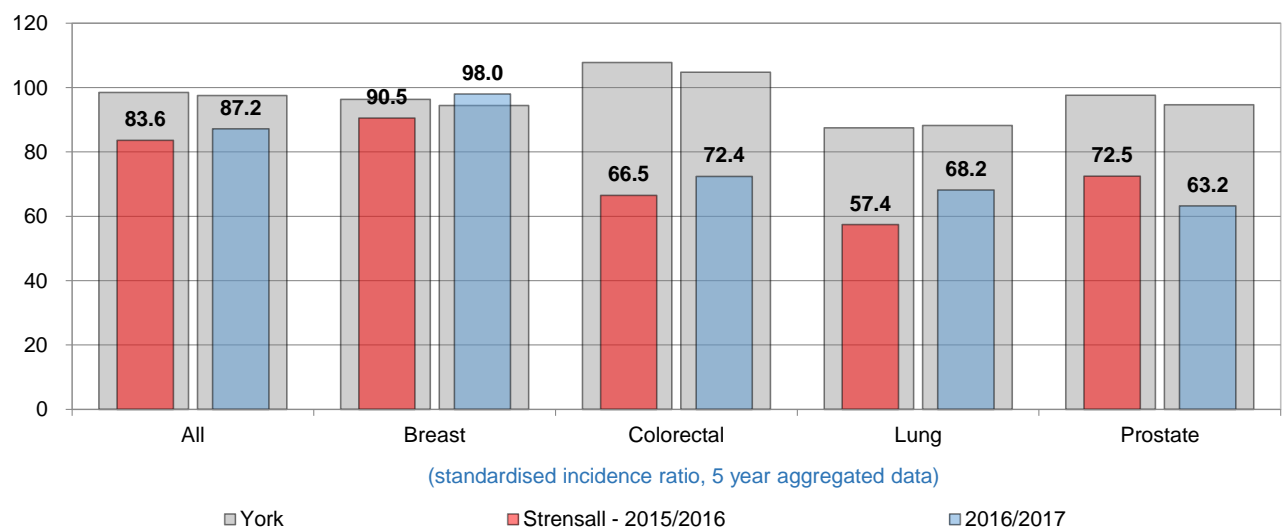
Source: Public Health England

Premature mortality



Source: Public Health England

New cases of cancer



Source: Public Health England

Adult Social Care

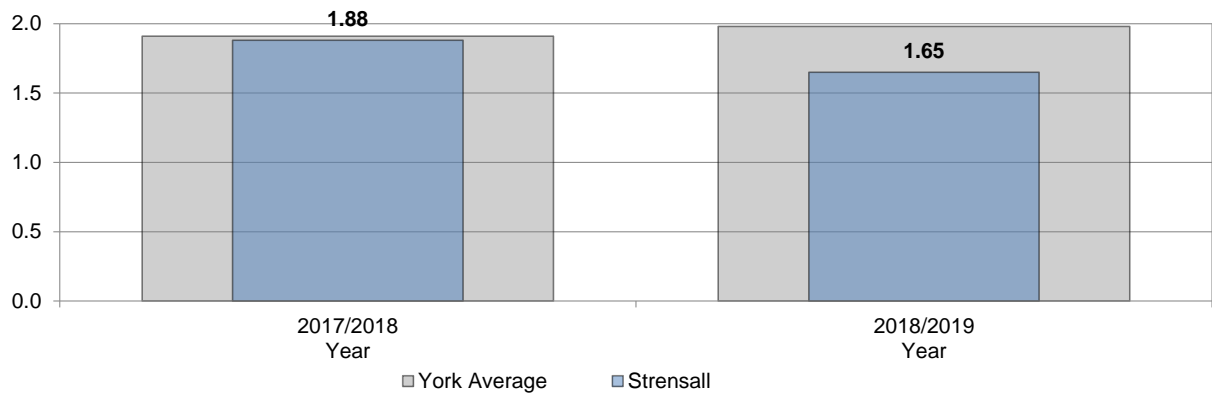
Social isolation

Social isolation: This is based on respondents to two questions on the Adult Social Care Survey regarding social contact and how time is spent.

A score of 1 indicates that the respondent has plenty of social contact and that they spend their time doing things they enjoy

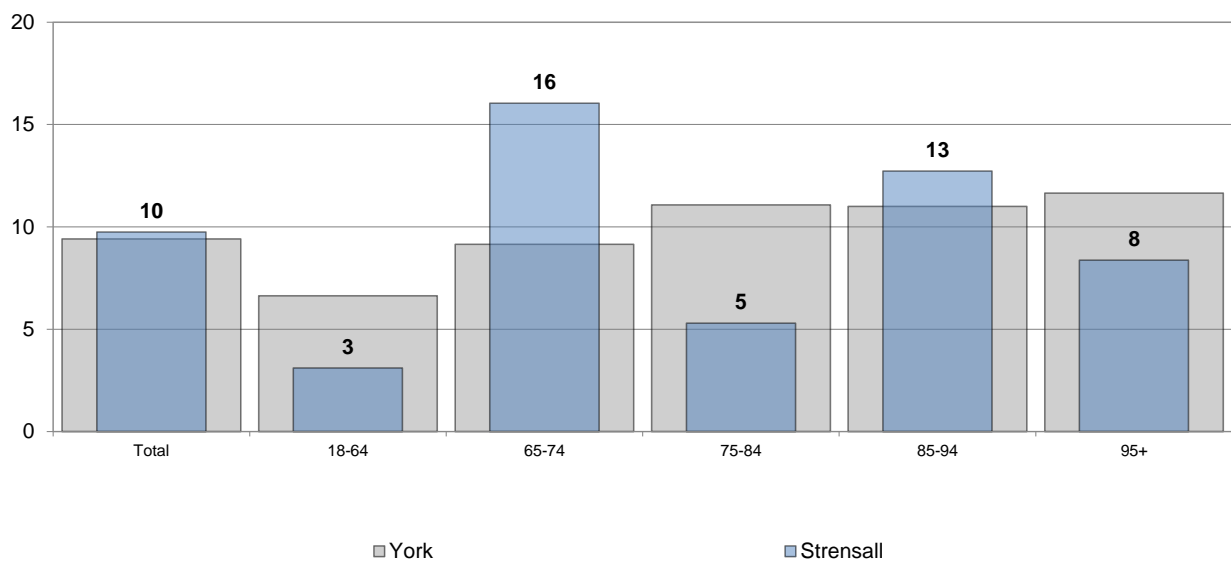
A score of 4 indicates that the respondent feels socially isolated and that they don't feel they do anything of value with their time.

The mean of all respondents' responses to both questions is the score presented here.



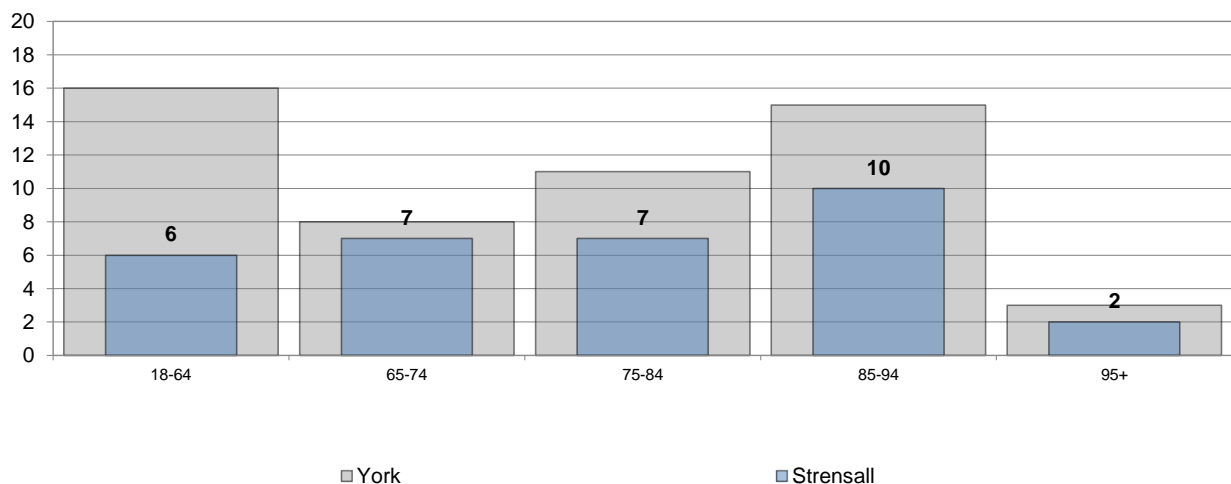
Source: Adult Social Care User Survey

Average Weekly Homecare Hours by Client Age



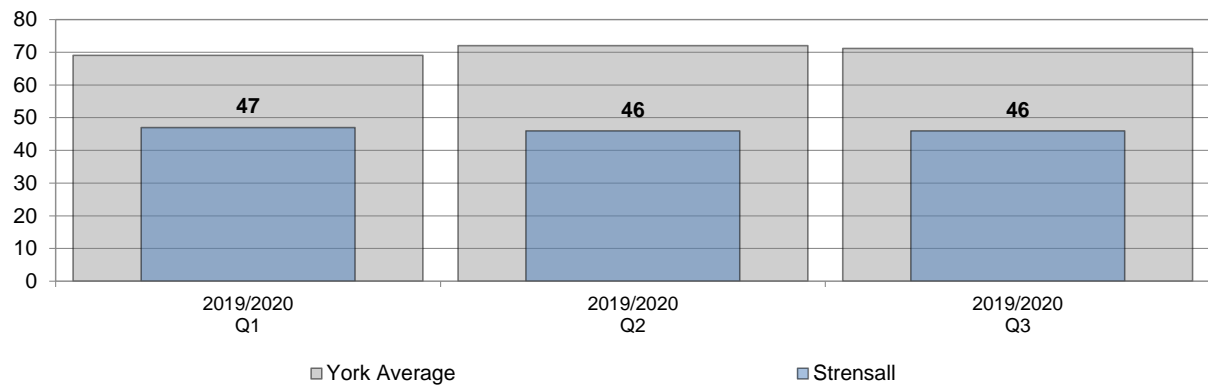
Source: Adults Social Care - 2019/2020

Homecare Clients by Age



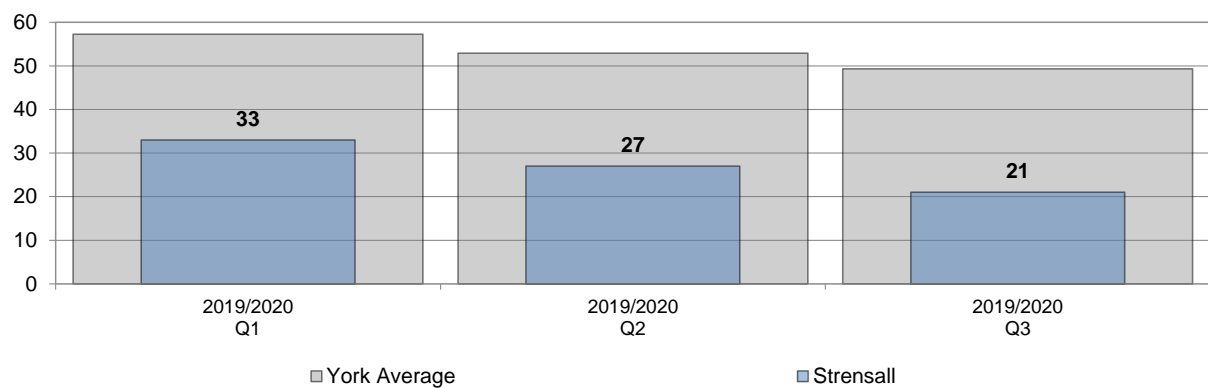
Source: Adults Social Care - 2019/2020

Number of clients getting paid packages of care that are not residential/nursing care



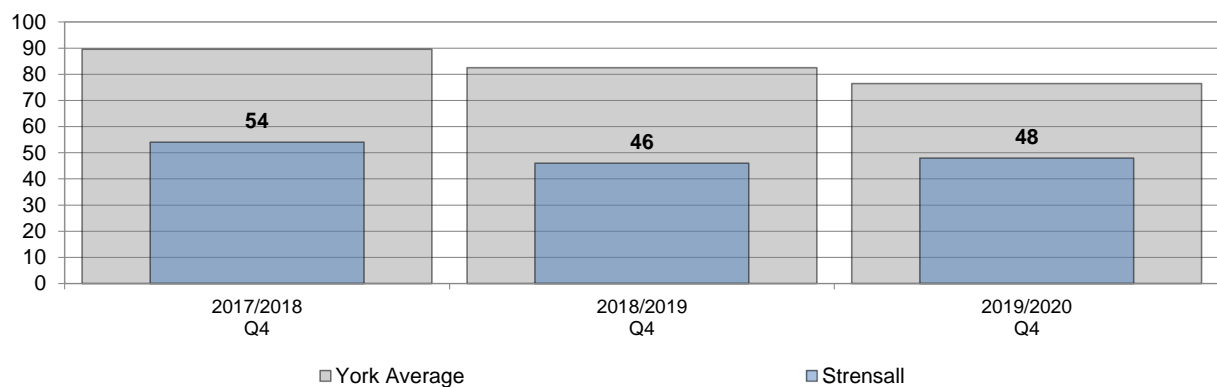
Source: Adults Social Care - 2019/2020

Number of new customers requesting Adult Social Care support



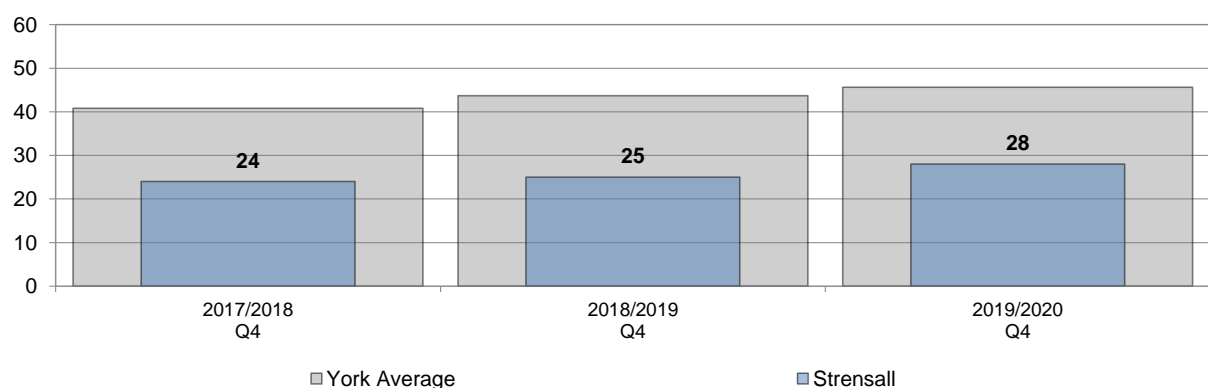
Source: Adults Social Care - 2019/2020

People supported to live independently through social services packages of care



Source: Adults Social Care - 2019/2020

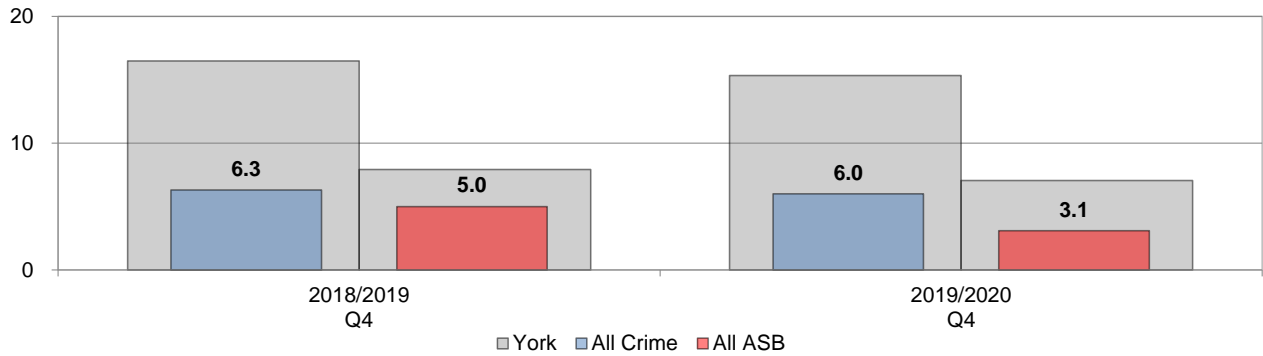
People supported to live independently through social services intervention



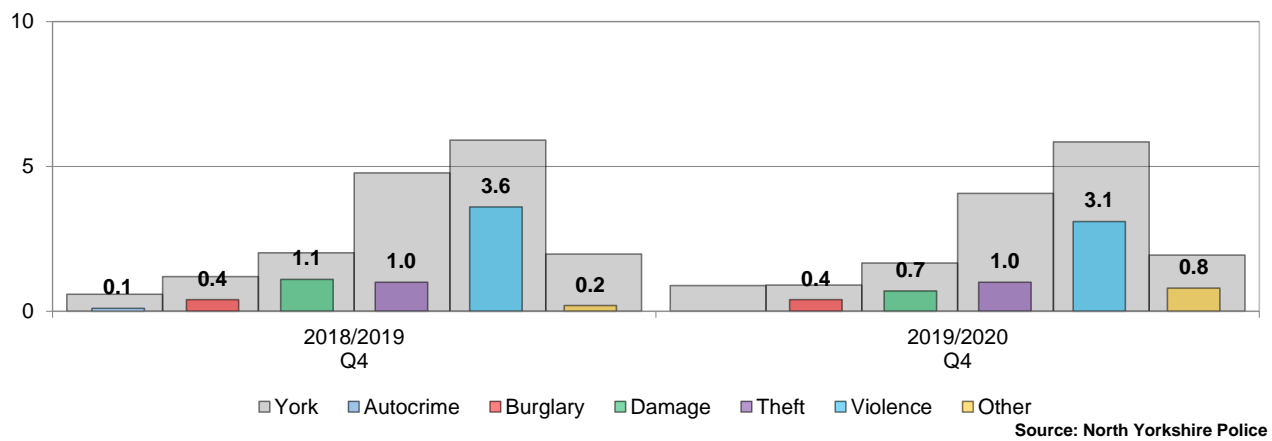
Source: Adults Social Care - 2019/2020

Public Realm

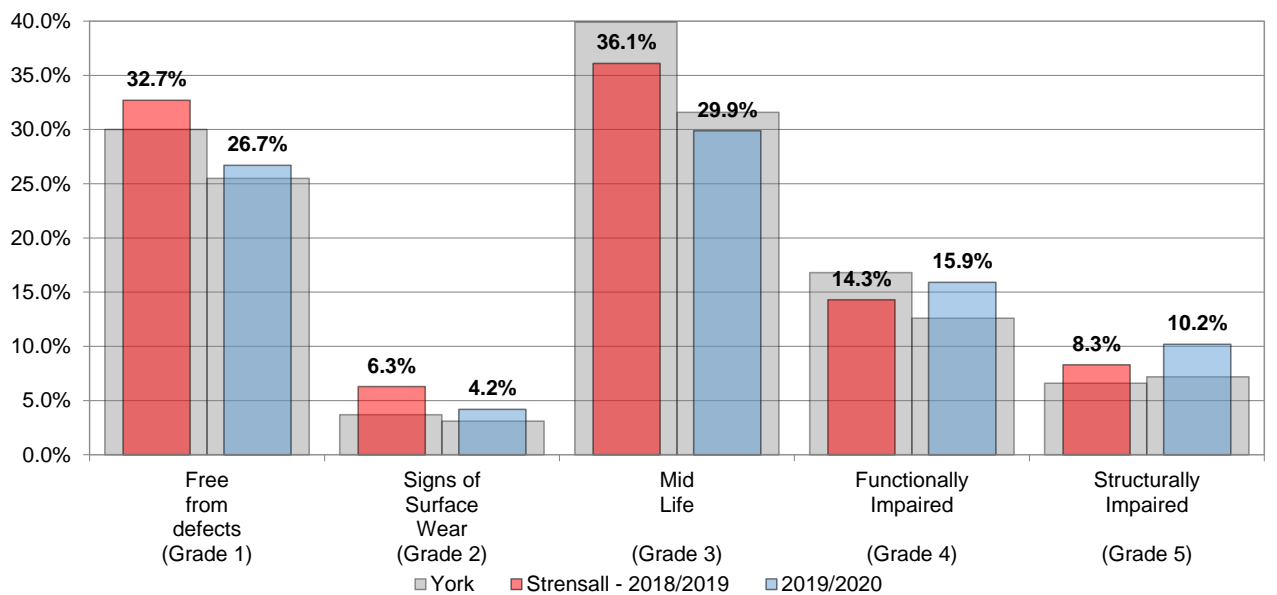
Total Crime and Total Anti-Social Behaviour per 1,000 population



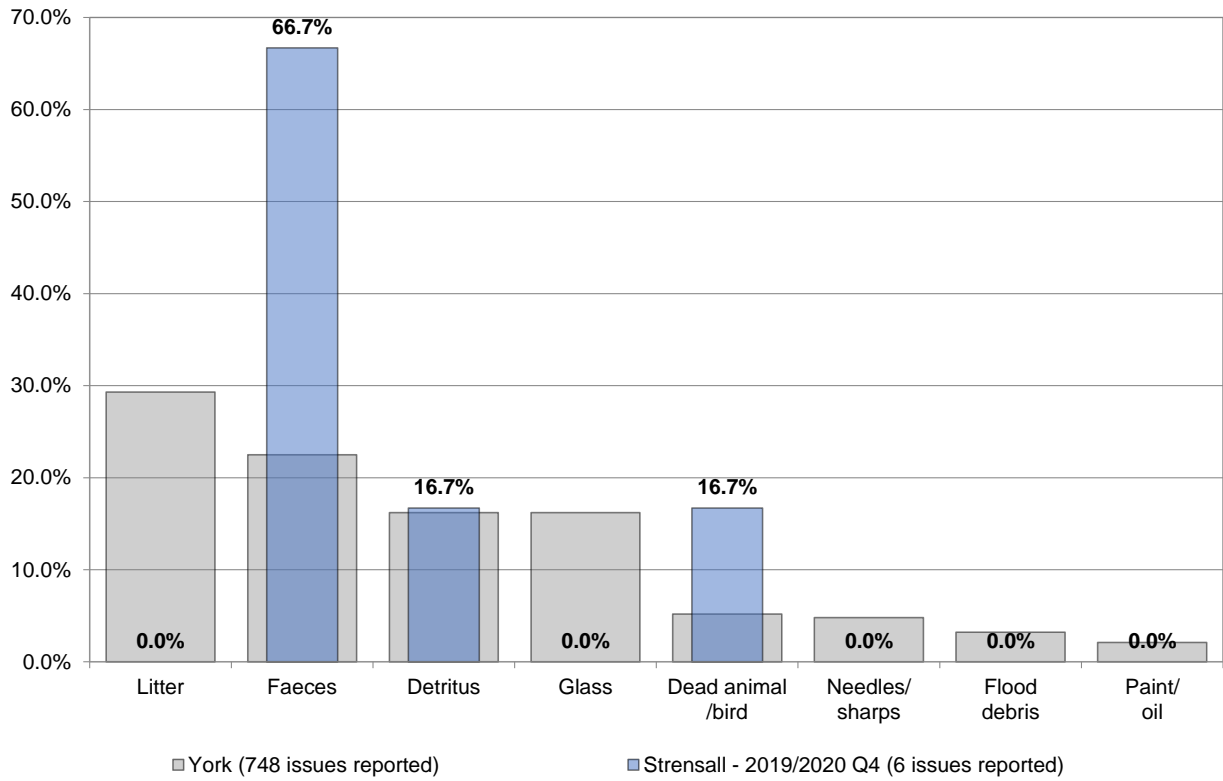
Crime Rate per 1,000 population



Percentage of road area that is/has

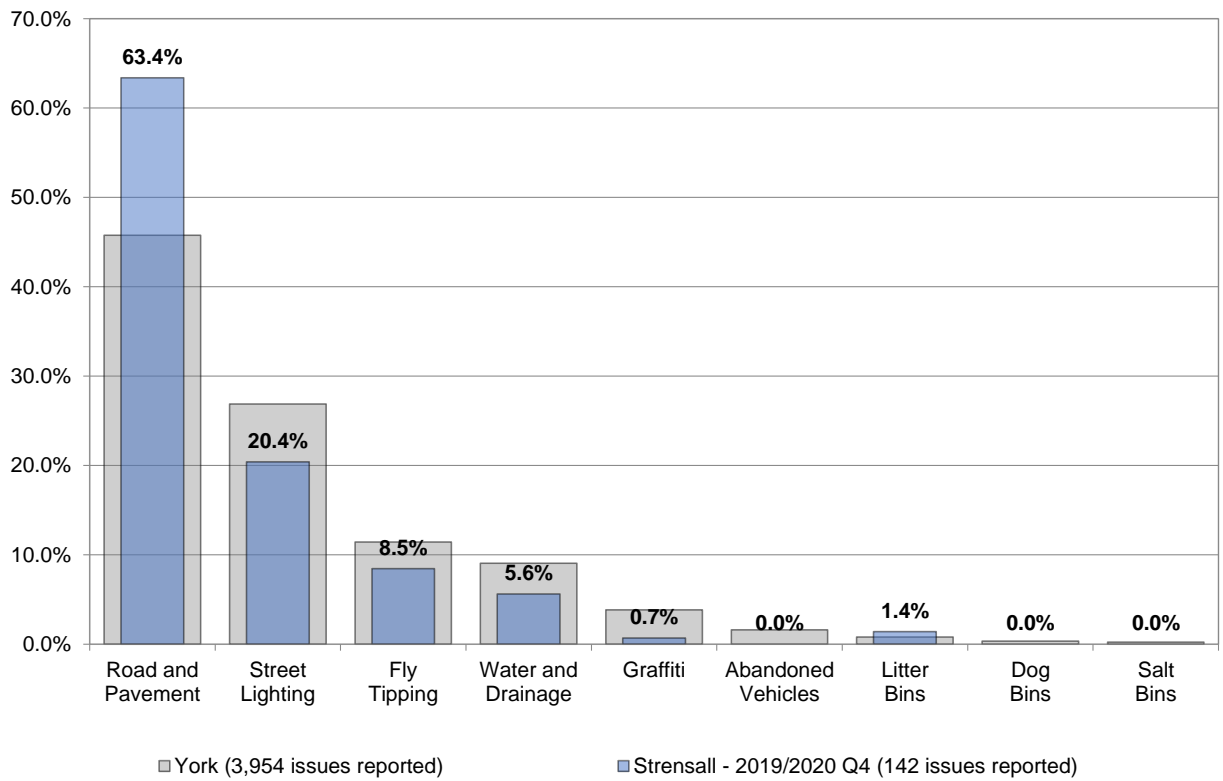


Street Cleaning - % of issues reported



Source: City of York Council

Other Public Realm - % of issues reported



Source: City of York Council

Education and Schools

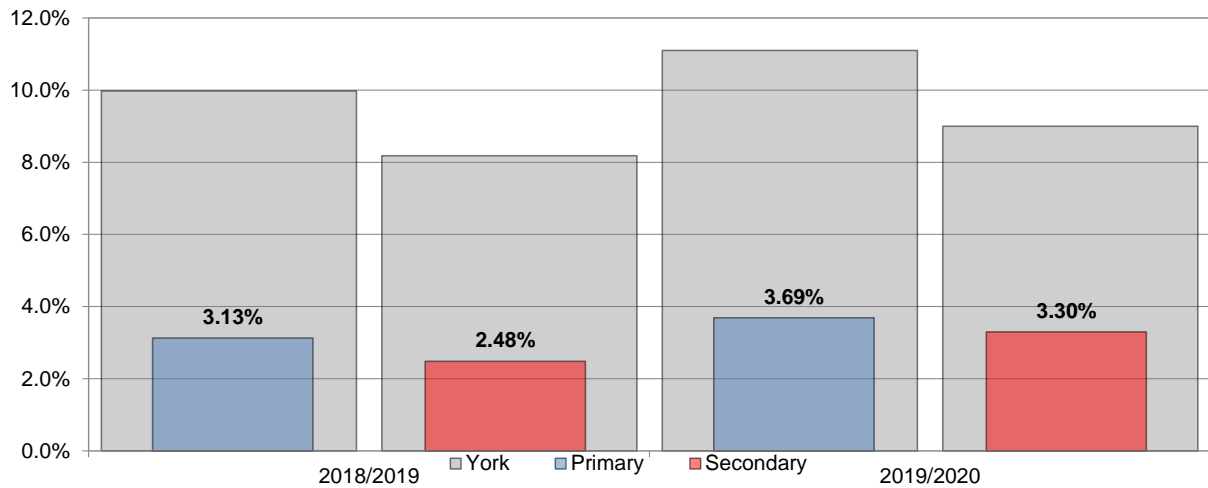
The following school catchment areas are part of Strensall Ward:

Primary: Huntington, Robert Wilkinson and Stockton on the Forest.

Secondary: Huntington.

The following data only relates to those pupils, from this ward, who attend York Schools.

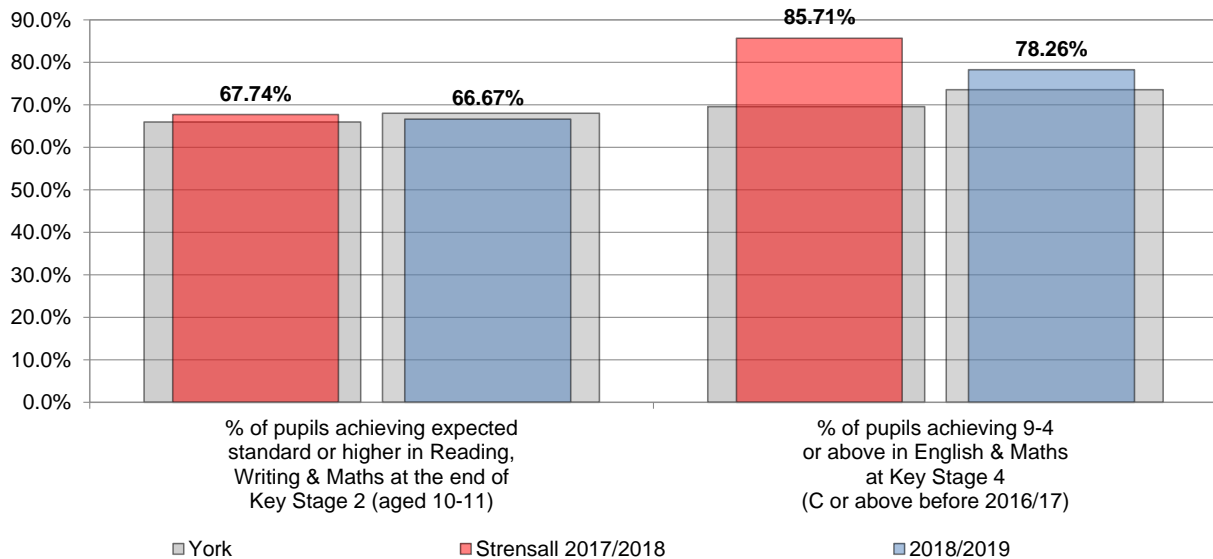
% Free School Meal pupils - (excluding subsidiary pupils)



Number of Pupils	2018/2019	2019/2020
Primary	704	759
Secondary	605	609

Source: School Census - October

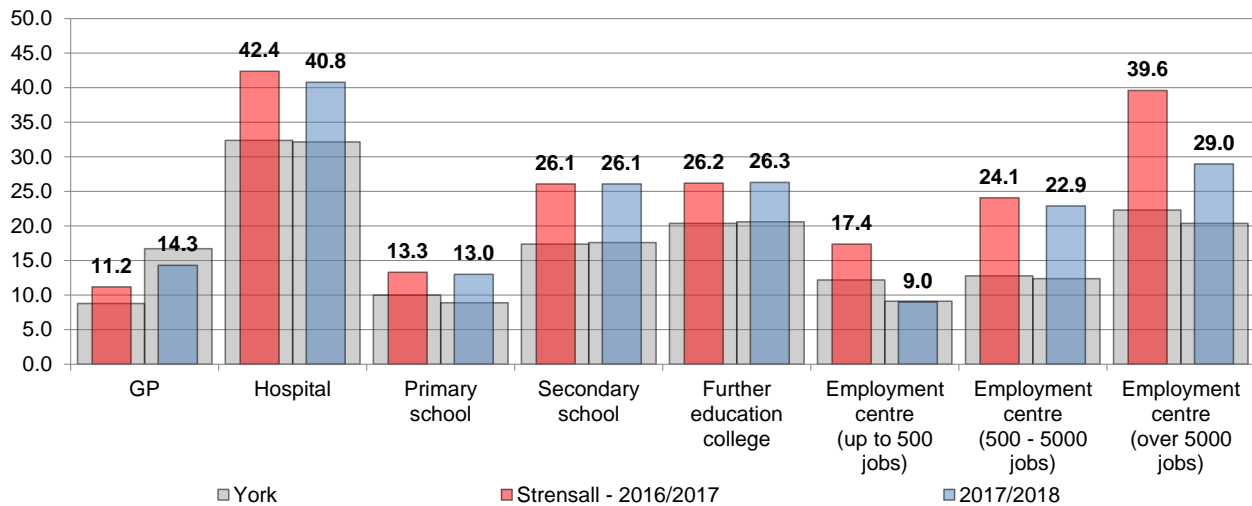
Educational Attainment



Source: Department for Education - 2018/19

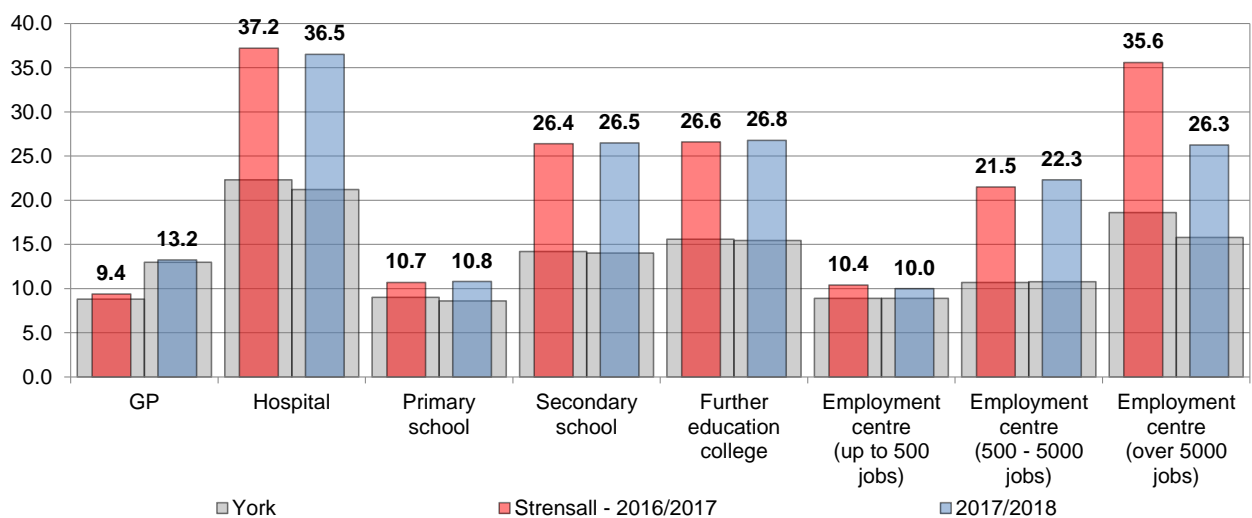
Access to local services

Travel time (minutes) by public transport / walking to nearest...



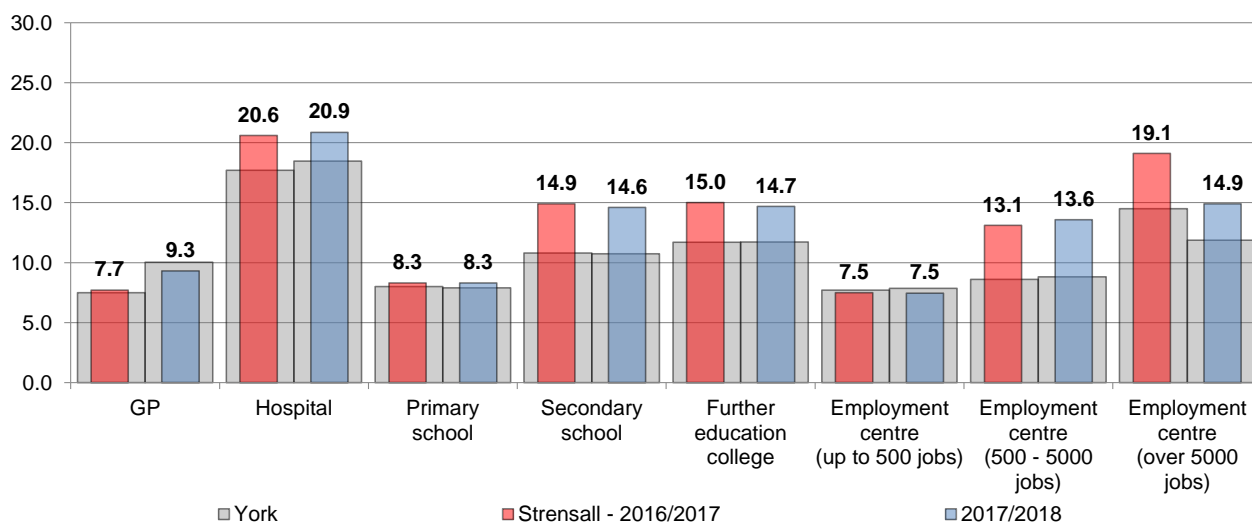
Source: Department of Transport - Journey time statistics

Travel time (minutes) by cycle to nearest...



Source: Department of Transport - Journey time statistics

Travel time (minutes) by car to nearest...



Source: Department of Transport - Journey time statistics

Broadband coverage and speeds

In March 2017 the UK Government introduced the Universal Service Obligation (USO) for broadband as part of its commitment in the UK Digital Strategy to ensure that the UK has world-class digital connectivity and inclusion.

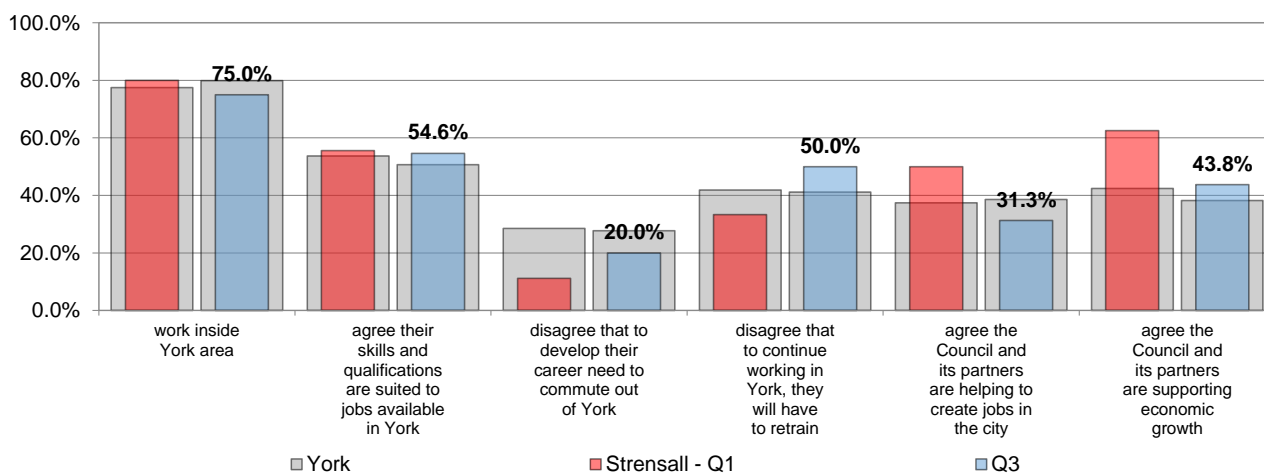
Measure	Strensall	York	Summary
Average download speed (Mb/s)	38.44	56.10	slower than the York average
Superfast broadband availability	91.21%	93.81%	worse than the York average
Connections receiving:			
slowest speeds (under 2 Mb/s)	0.03%	0.04%	lower than the York average
slower speeds (under 10 Mb/s)	2.20%	0.64%	higher than the York average
superfast speeds (over 30 Mb/s)	88.12%	93.06%	lower than the York average

This data is based on analysis of Ofcom's Connected Nations data for 2019/2020. Ofcom collected and analysed data from major fixed telecoms operators (BT, Virgin Media, Sky, Talk Talk, Vodafone and KCOM). The availability data also includes coverage information provided by alternative network providers (B4RN, BU-UK, City Fibre, Gigaclear, Hyperoptic, ITS and Relish). Due to variations in broadband performance over time, Ofcom cautions that the data should not be regarded as a definitive and fixed view of the broadband infrastructure but rather a snapshot of current variation in availability and performance across the country. Due to privacy concerns Ofcom did not present the information in postcodes with fewer than four broadband connections.

Resident Engagement

Resident responses about the Local Economy

Respondents who are retired or not working due to long term illness or disability were ineligible to answer the following

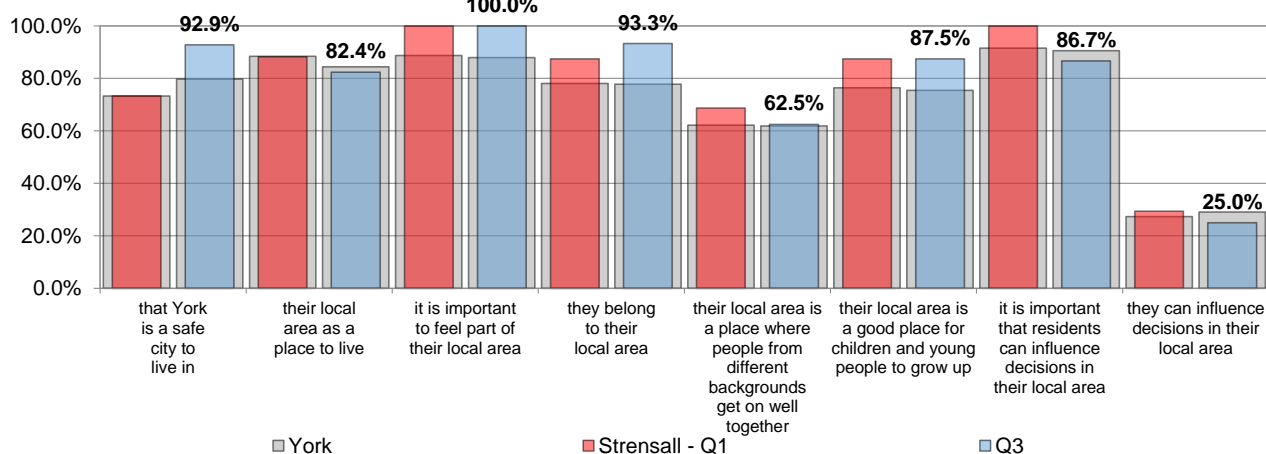


NB - Number of responses varies for each question

Source: Talkabout Survey - Q1 + Q3 2019/2020

Resident satisfaction responses about their Local Area

Respondents were asked to consider their Local Area as the area within 15-20 minutes walking distance from their home

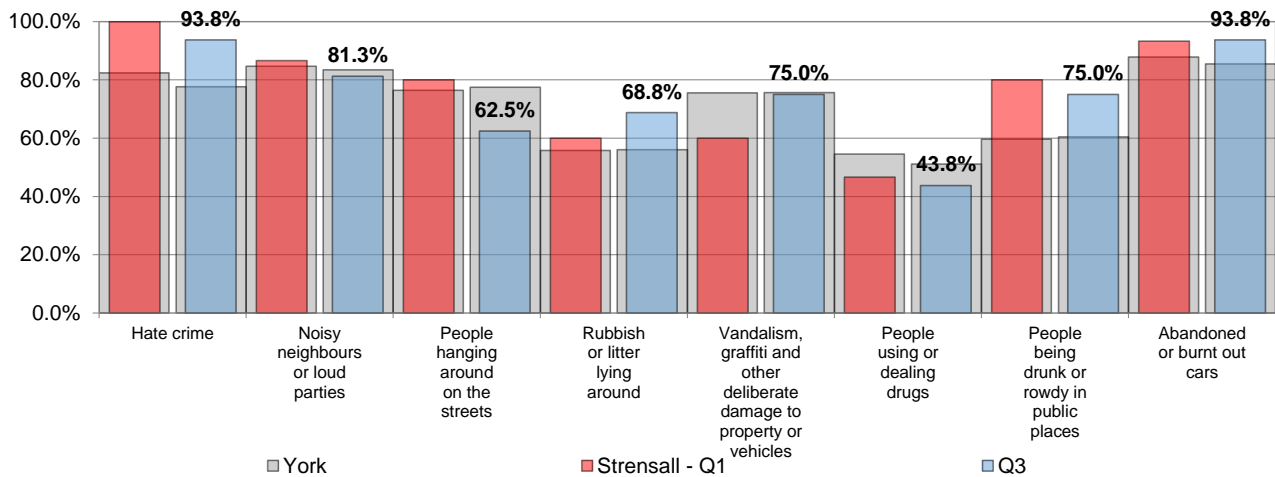


NB - Number of responses varies for each question

Source: Talkabout Survey - Q1 + Q3 2019/2020

Resident satisfaction responses about Public Realm in their Local Area

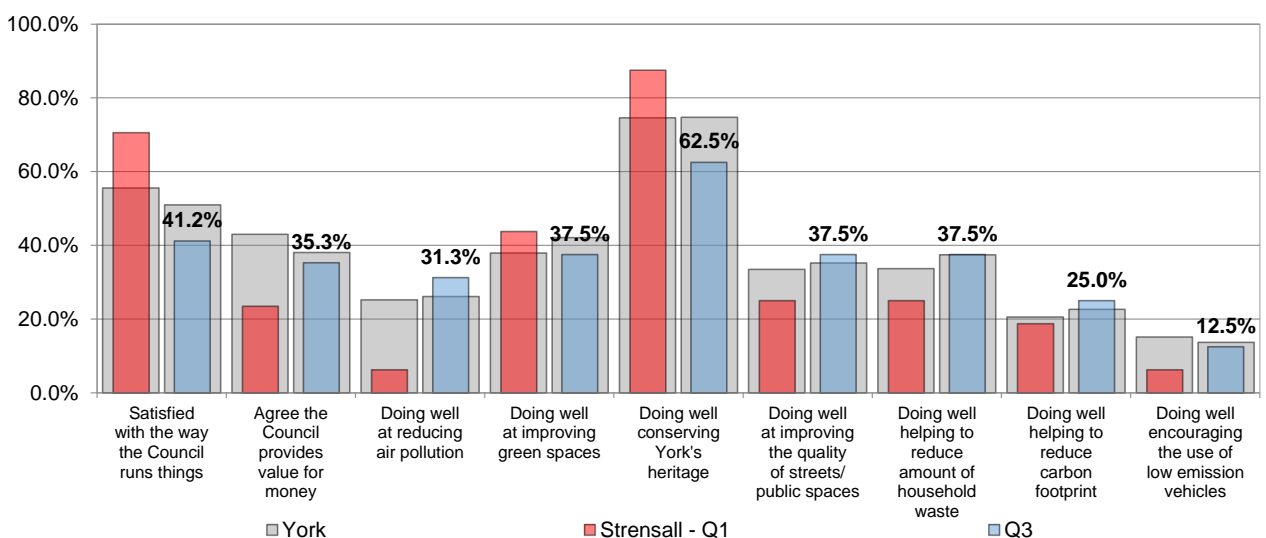
Respondents reporting the following as 'not a problem'



NB - Number of responses varies for each question

Source: Talkabout Survey - Q1 + Q3 2019/2020

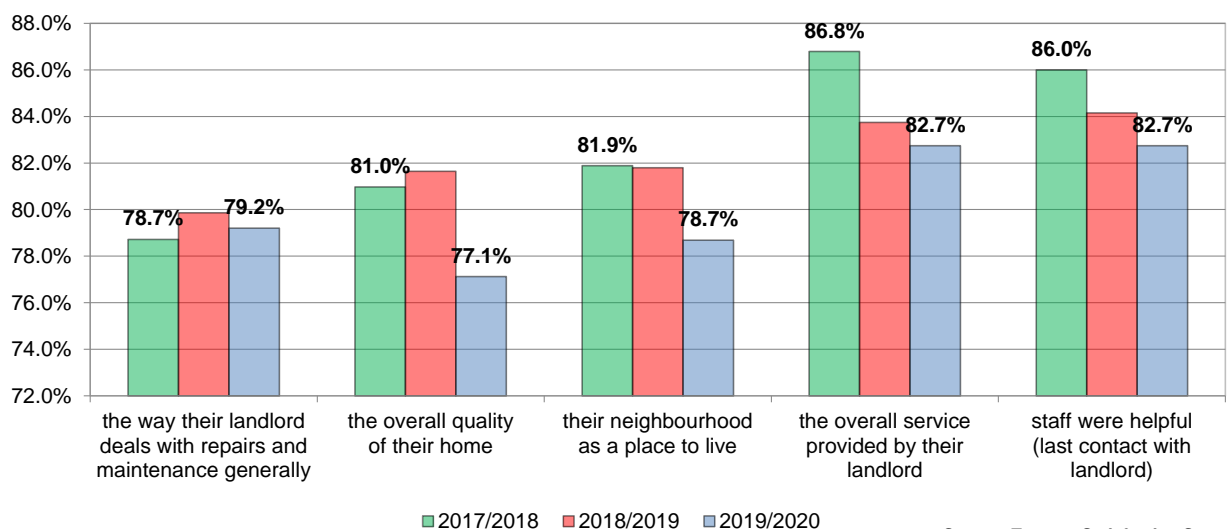
Resident satisfaction responses about the Council (and partners)



NB - Number of responses varies for each question

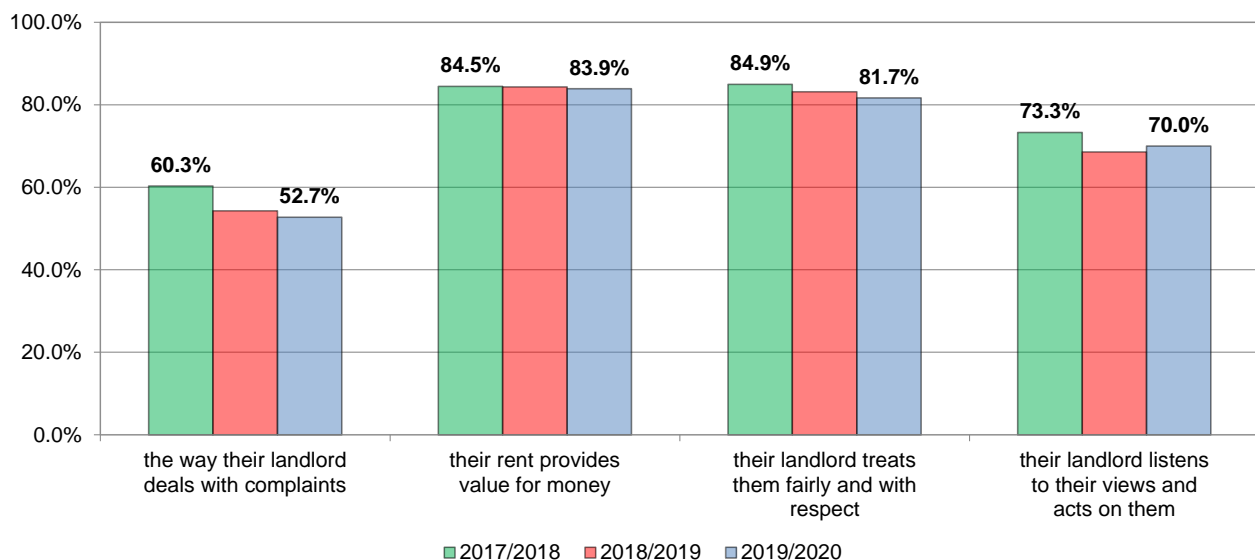
Source: Talkabout Survey - Q1 + Q3 2019/2020

York Council house tenants satisfied with / agree that...

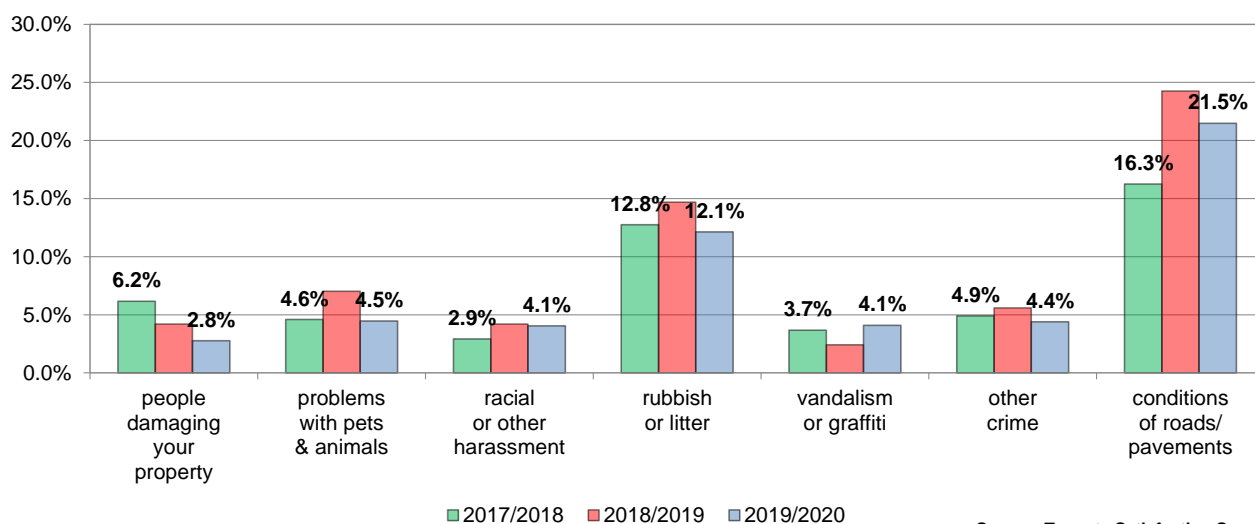
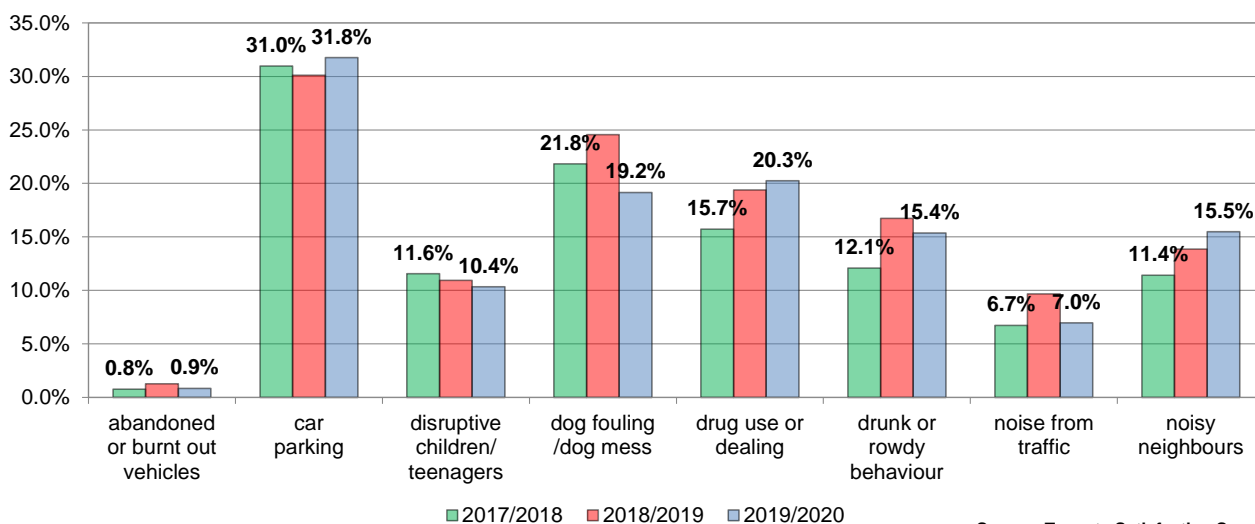


Source: Tenants Satisfaction Survey

York Council house tenants satisfied with / agree that...



York Council house tenants say is a major problem in their neighbourhood...



Experian Groups
B Prestige Positions High value detached homes, married couples, managerial and senior positions, supporting students and older children, high assets and investments.
A Country Living Rural locations, well-off homeowners, attractive detached homes, higher self-employment, high car ownership.
G Rural Reality Rural locations, village and outlying houses, agricultural employment, most are homeowners, affordable value homes.
D Domestic Success Families with children, upmarket suburban homes, owned with a mortgage, 3 or 4 bedrooms, high internet use.
H Aspiring Homemakers Younger households, full-time employment, private suburbs, affordable housing costs, starter salaries.
F Senior Security Elderly singles and couples, homeowners, comfortable homes, additional pensions above state, don't like new technology.
E Suburban Stability Older families, some adult children at home, suburban mid-range homes, 3 bedrooms, have lived at same address some years.
Experian Types
G29 Satellite Settlers Mature households, live in larger villages, close to transport links, own pleasant homes, online groceries.
B07 Alpha Families Married couples, two professional careers, school age children, high salaries, large mortgage, online shopping to save time.
D15 Modern Parents Families with school age children, modern housing, good quality detached homes, double income families, own tablets.
A04 Village Retirement Retired couples and singles, larger village location, like to be self-sufficient, enjoy uk holidays, most likely to play cricket and golf.
H34 Contemporary Starts Cohabiting couples and singles, late 20s and 30s, some have young kids, modern housing, owned or rented, further away from centres, use ebay.
D16 Mid-Career Convention Married couples with kids, traditional suburbs, professional jobs, likely to have life cover, high proportion with mortgage.
B05 Empty-Nest Adventure Couples aged 56 and over, children have left home, live in long-term family home, book holidays and tickets online, comfortable detached homes.
A03 Wealthy Landowners High value large detached homes, rural locations, own several cars, most likely to own a horse, mature married couples.
B06 Bank of Mum and Dad Married couples aged 50-65, adult children at home, high salaries from senior positions, quality 4 bed detached homes, mortgage nearly paid off.
A01 Rural Vogue Families with children, detached housing, village locations, good income, travel to nearest school.