

York Summary

- York has 202,433 residents with 9.8% from a black and minority ethnic community group. 84% are in good health, with 15.3% stating they have some limitation in day to day activities.
- 66% of residents own their own home outright or via a mortgage, 18% are private renters and 14% social tenants.
- 73.5% of residents have a NVQ level 1-4 qualification with 18% having no qualification at all.
- 11.1% of children live in poverty and there are 9.1% of households in fuel poverty.
- 7.4% of the working population claim out of work benefits and 0.8% claim job seekers allowance.

Micklegate Ward



0 0.5
kilometres

Scale: 1:20,560

Reproduced from the Ordnance Survey with the
Permission of the Controller of Her Majesty's
Stationery Office © Crown copyright.
Unauthorised reproduction infringes Crown
copyright and may lead to prosecution or civil
proceedings. City of York Council 100020818 2010.

Ward Summary

- Micklegate has 12,516 residents with 14.7% from a black and minority ethnic community group. This compares to 10,994 residents and a BME proportion of 7.7% in 2001.
- 51% of residents own their own home outright or via a mortgage, 34% are private renters and 13% social tenants.
- 80.7% of residents have a NVQ level 1-4 qualification with 12.8% having no qualification at all.
- 10.7% children live in poverty and there are 11.9% of households in fuel poverty.
- 7.3% of the working population claim out of work benefits and 0.9% claim job seekers allowance.

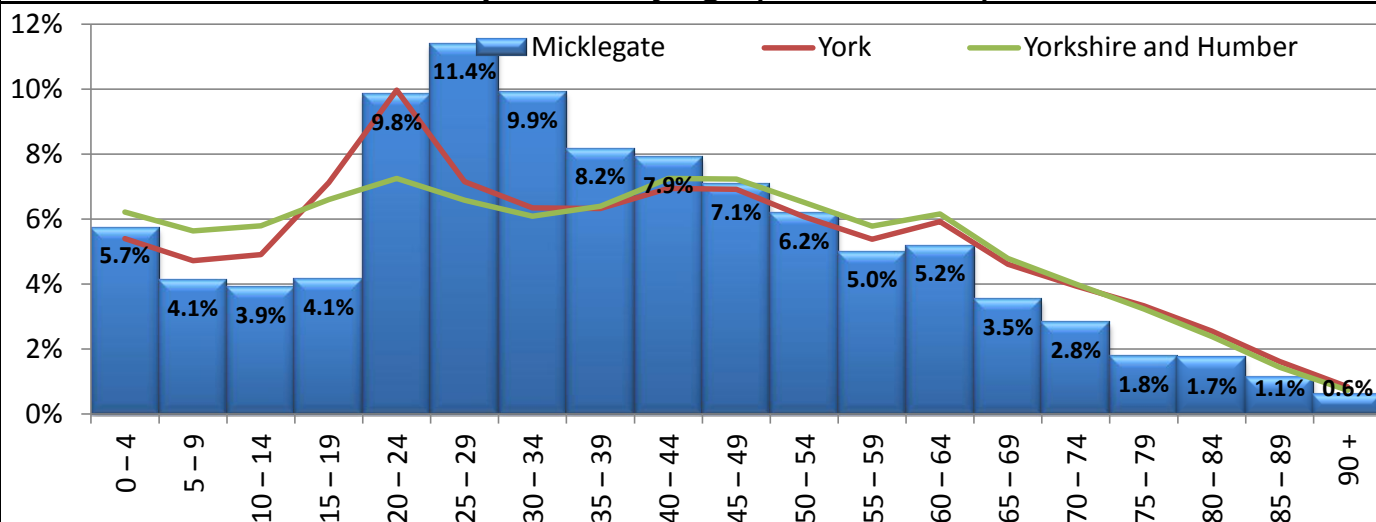


Micklegate

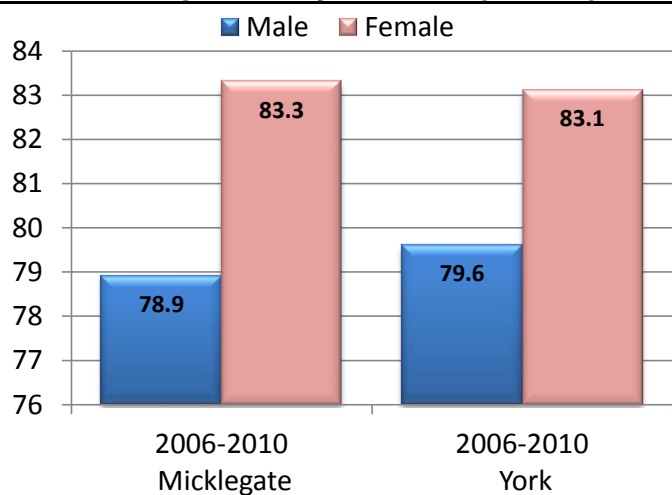
Population

In 2011 the ward's population was 12,516, or 6.3% of York's total population. 27.7% were under the age of 25, and 11.5% were over 65. (Census 2011)

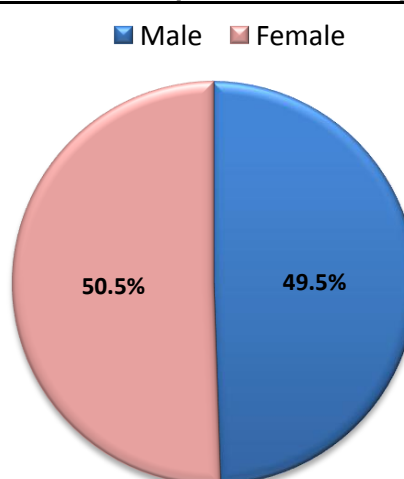
% Population by age (Census 2011)



Life Expectancy at birth (APHO)

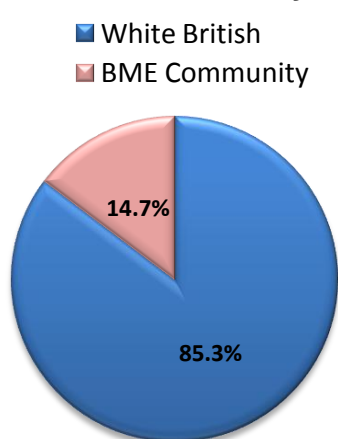


Gender (Census 2011)



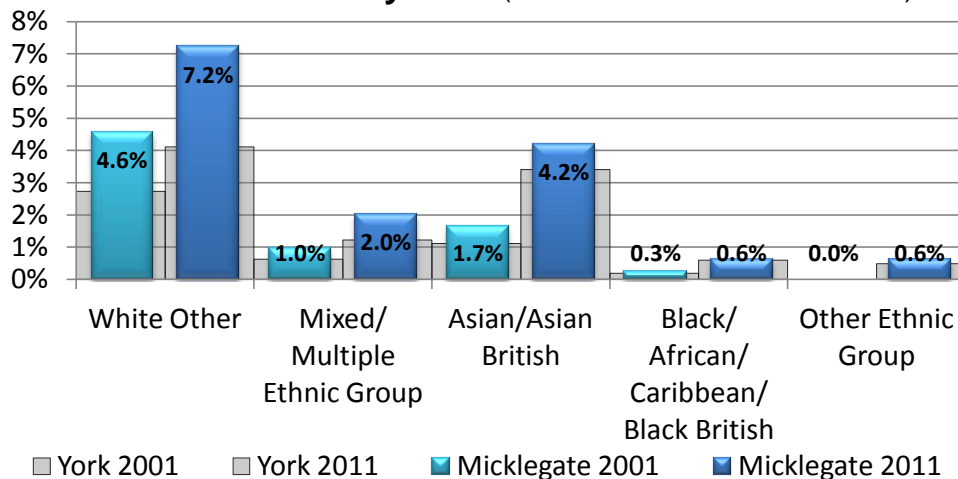
Ethnicity (Census 2011)

Ward Ethnicity



BME Community

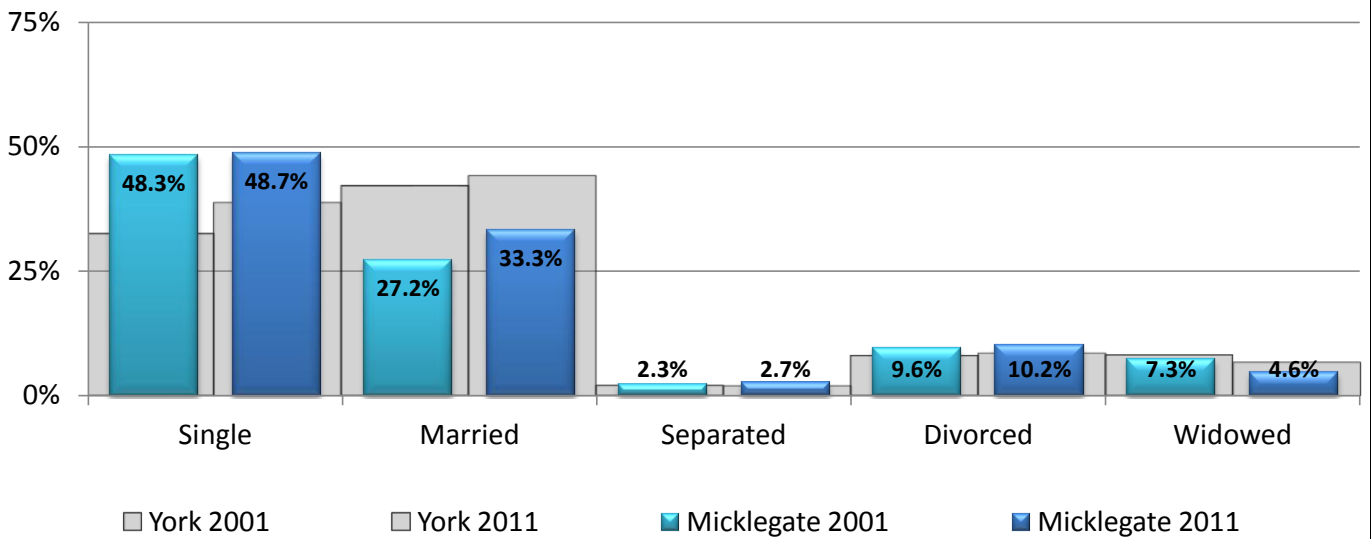
(does not include white British)



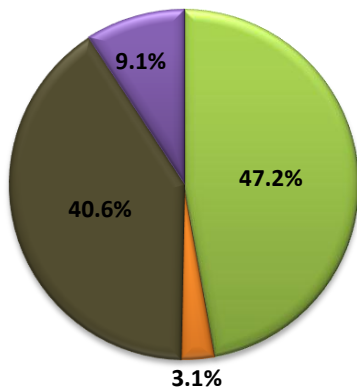


Census 2011 Update

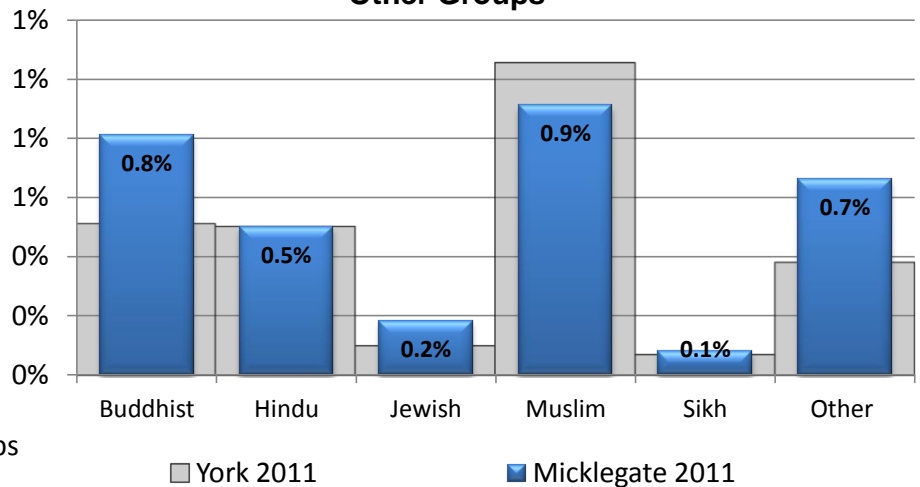
Marital Status



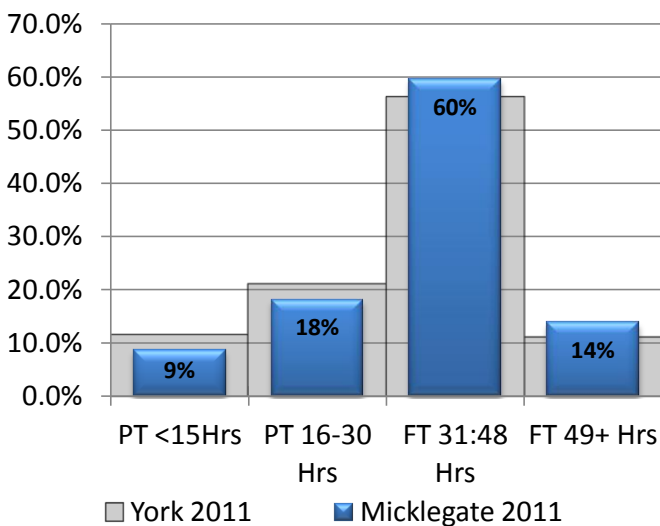
Religion



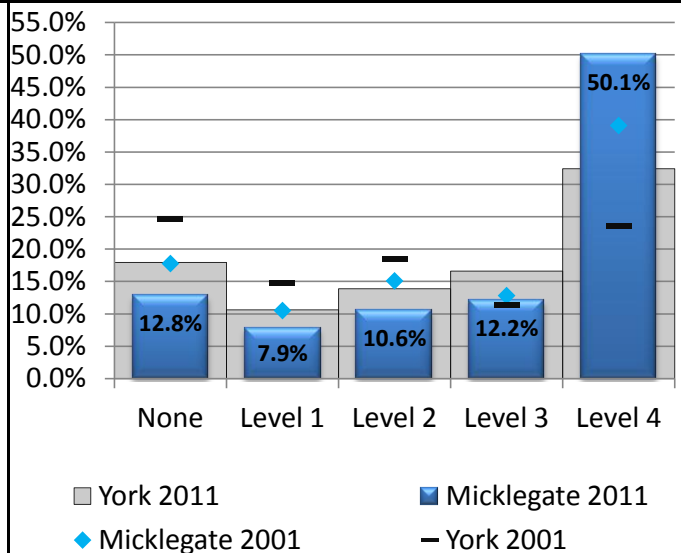
Other Groups



Hours Worked



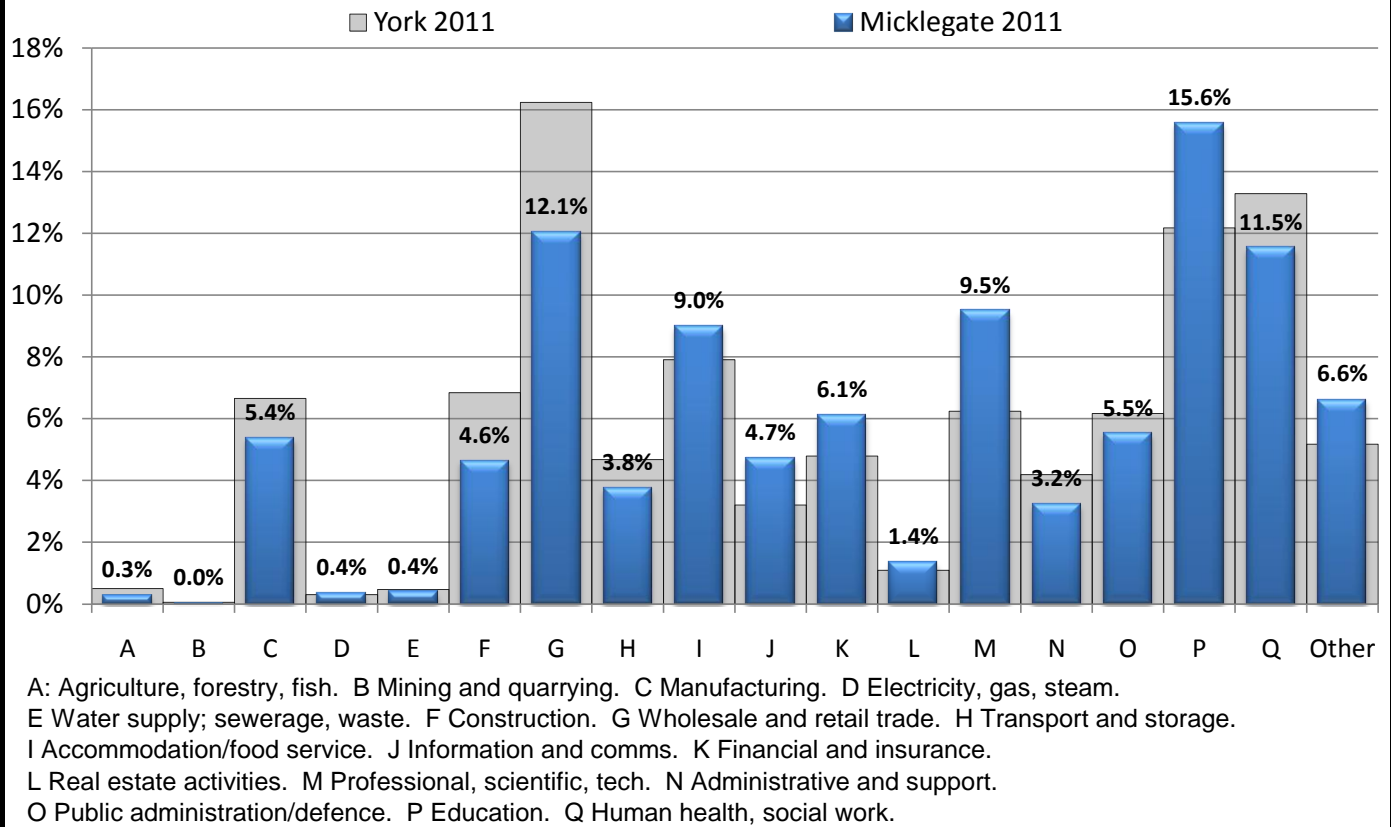
Qualifications



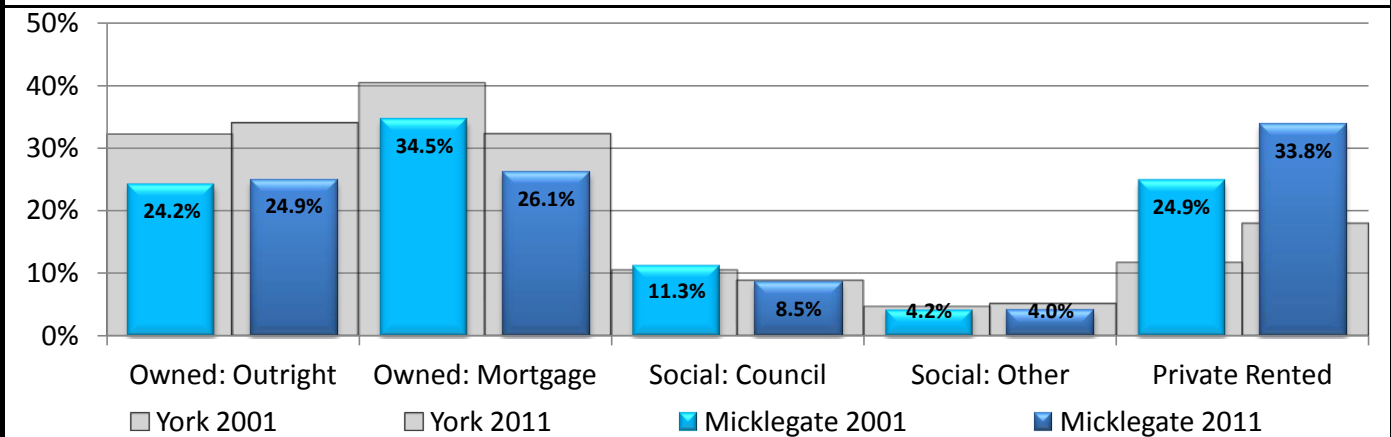


Census 2011 Update

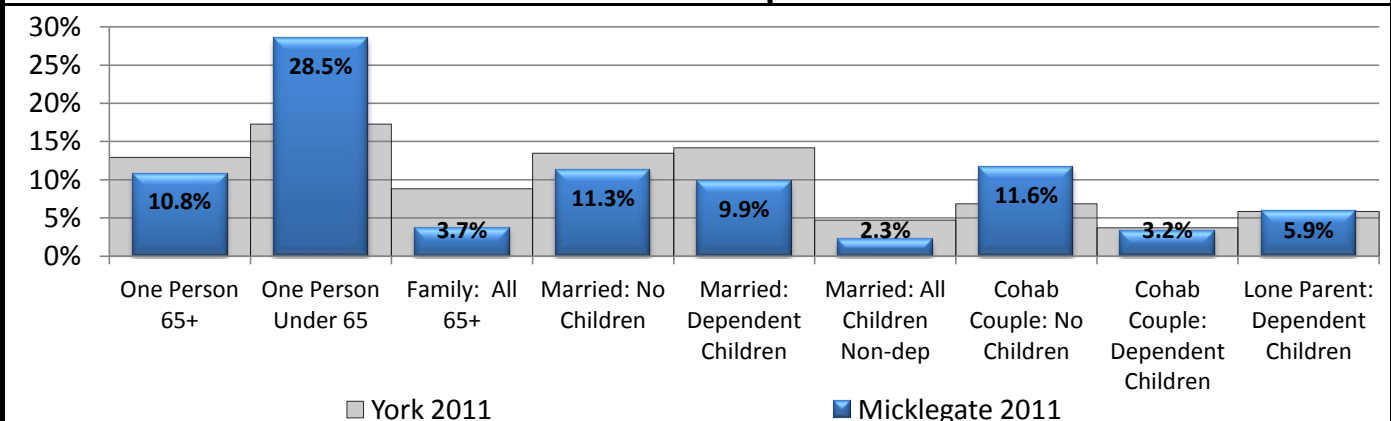
Industry



Tenure



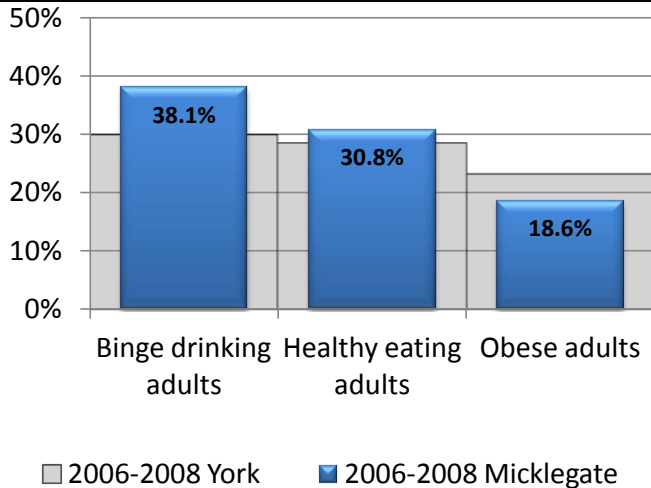
Household Composition



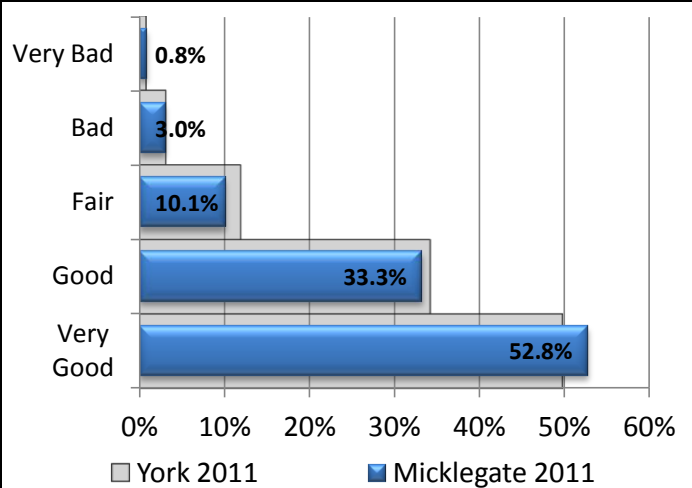


Health and Wellbeing

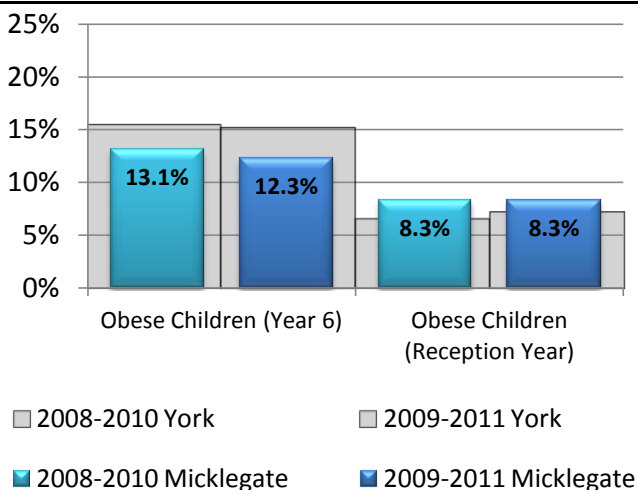
% Healthy Adults (APHO)



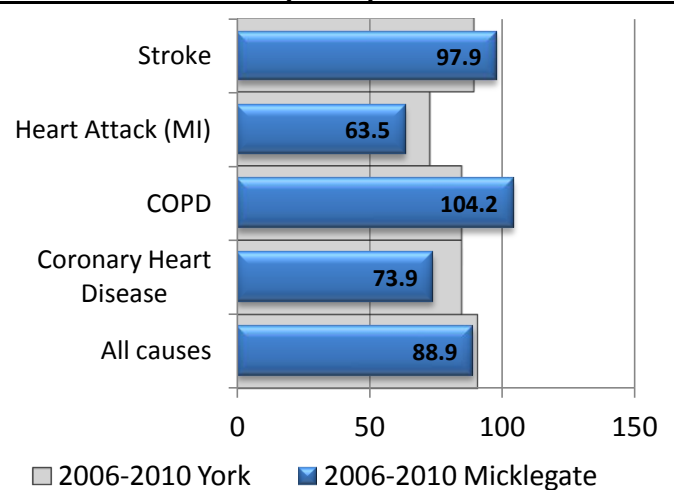
General Health (Census 2011)



% Child Obesity (NHS)

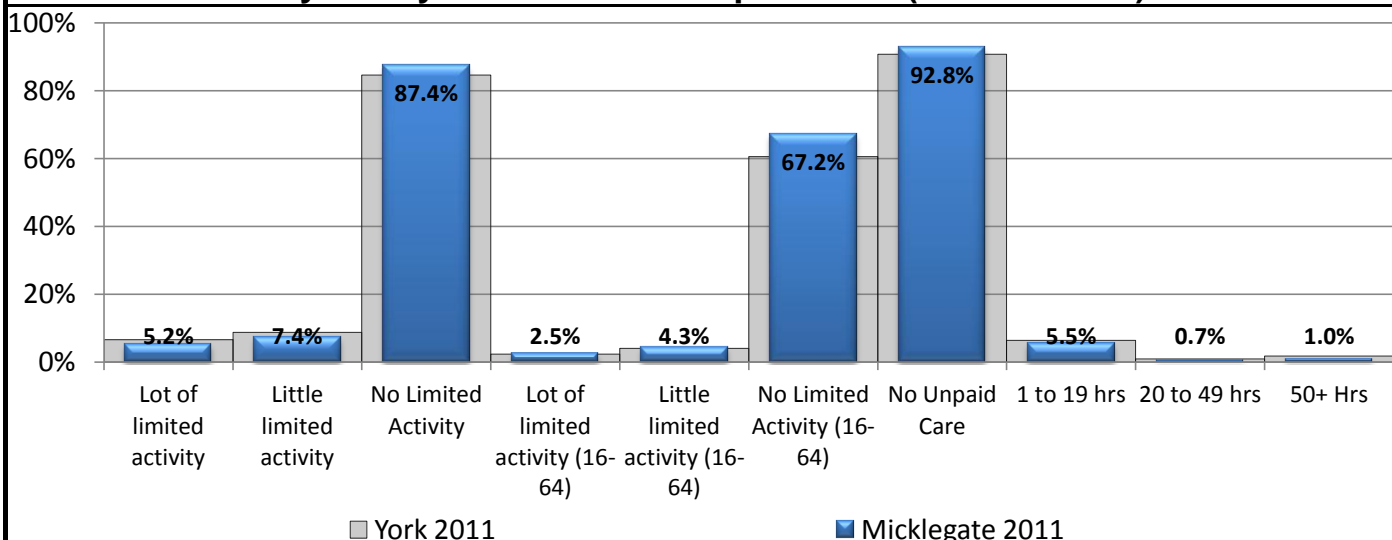


SAR Emergency Hospital Admissions (NHS)



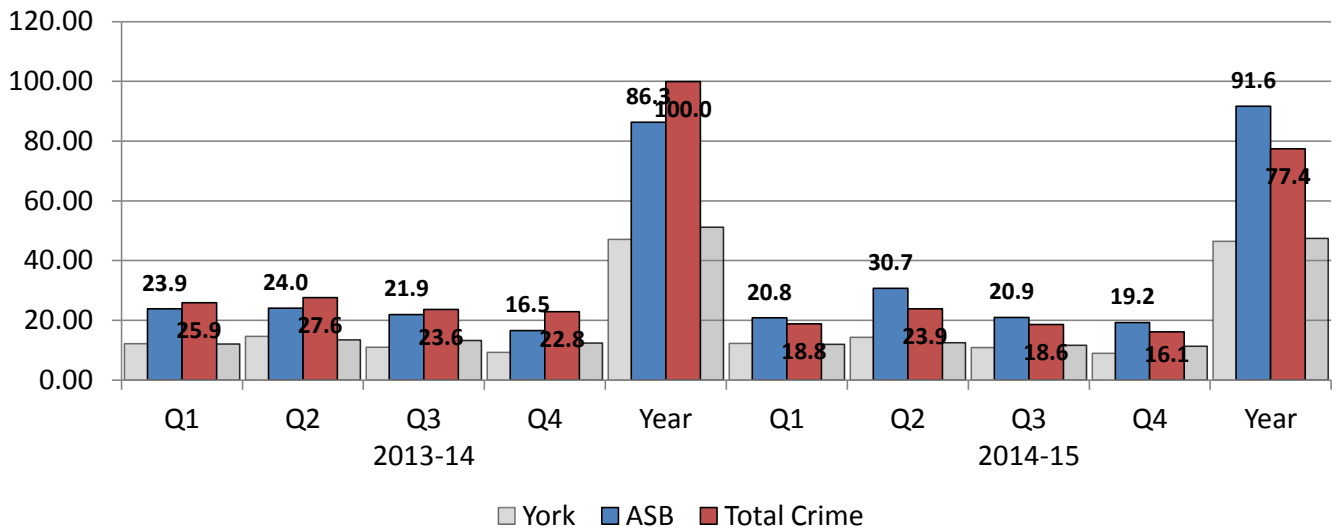
*SRR/SAR/SMR are standardised ratios which represent the decrease or increase in registration/admission/mortality for the cohort against the general population (100 is equal to general population).

Day to Day Activities and Unpaid Care (Census 2011)

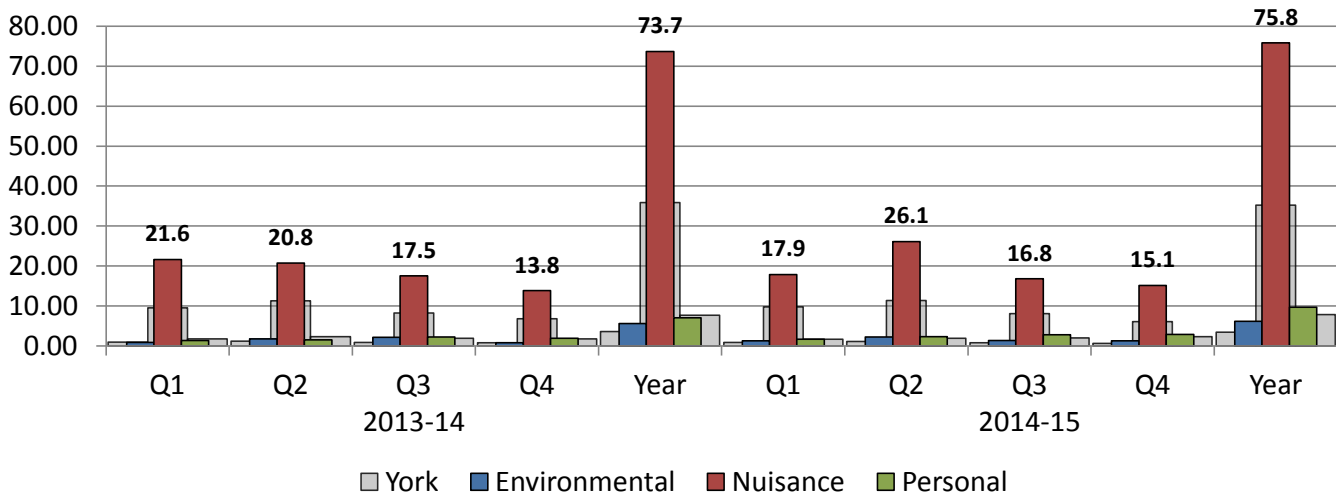


Crime and Anti-Social Behaviour

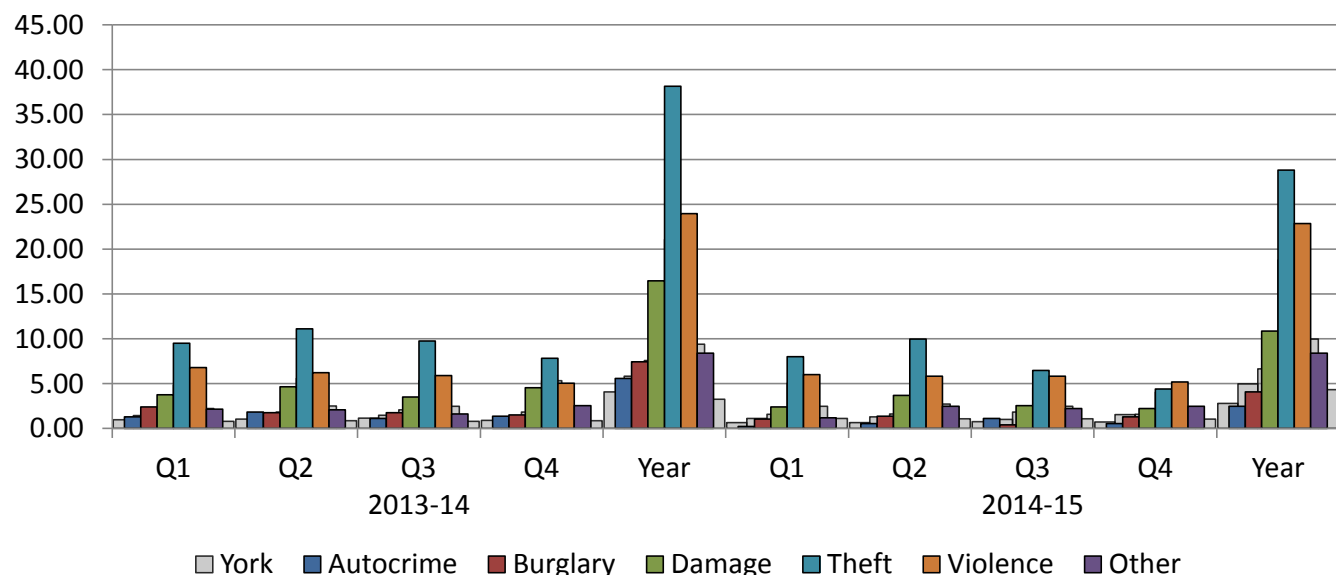
Total Crime and Total Anti-Social Behaviour per 1,000 population (NYP)



ASB per 1,000 population (NYP)



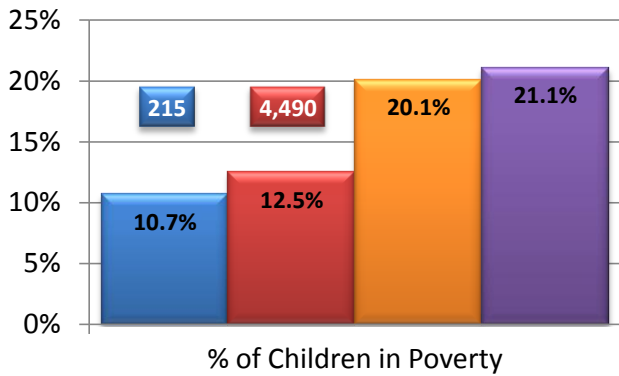
Crime Rate per 1,000 population (NYP)





Poverty

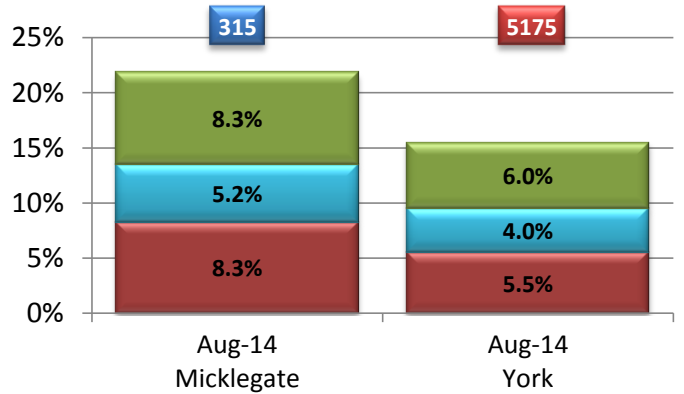
Child Poverty 2011 (DWP)



■ Micklegate
■ York
■ Yorkshire and Humber
■ England

*Children in families receiving CTC only, and income <60% median income.

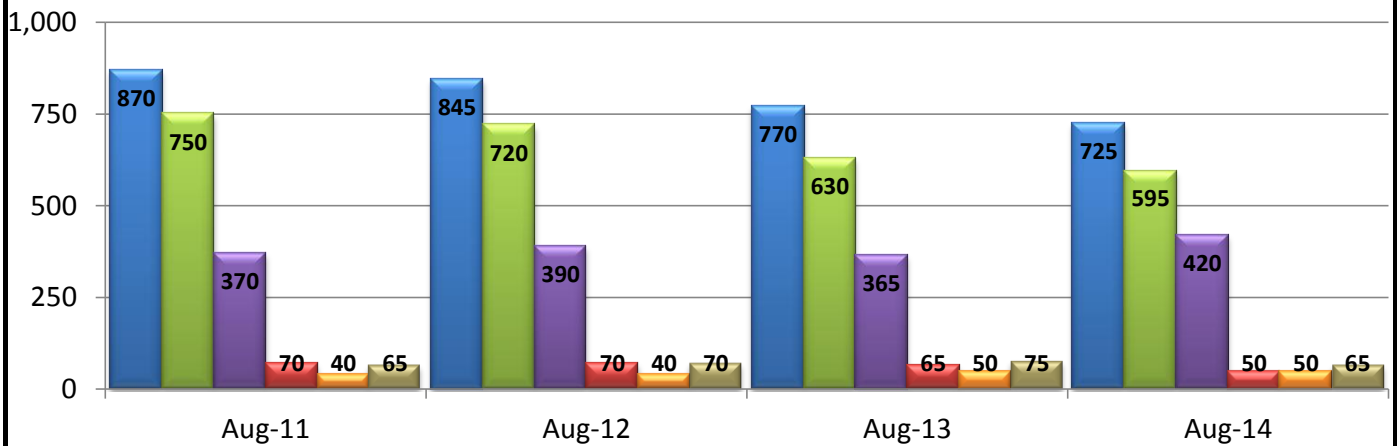
Pension Credit - NOMIS (Proportion of 65+ Population)



*Pension credit is a benefit for older people that is based on your income. It has two parts - guarantee and saving credit.

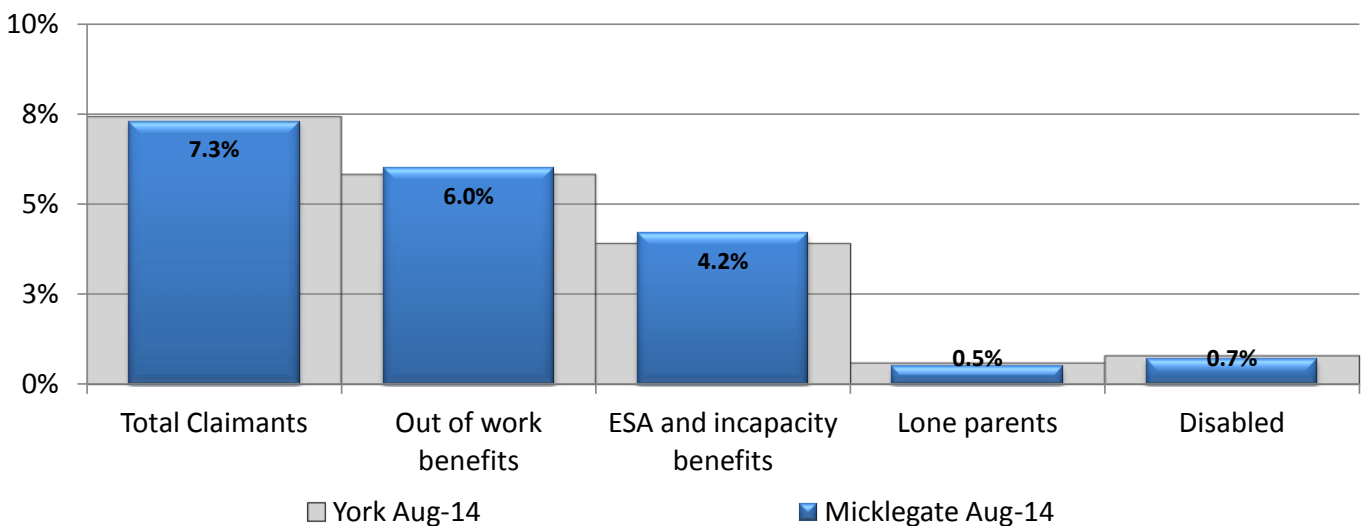
Economy

Benefits Claimants Numbers (NOMIS) By Ward



■ Total Claimants ■ Out of work benefits ■ ESA and incapacity benefits ■ Lone parents ■ Carers ■ Disabled

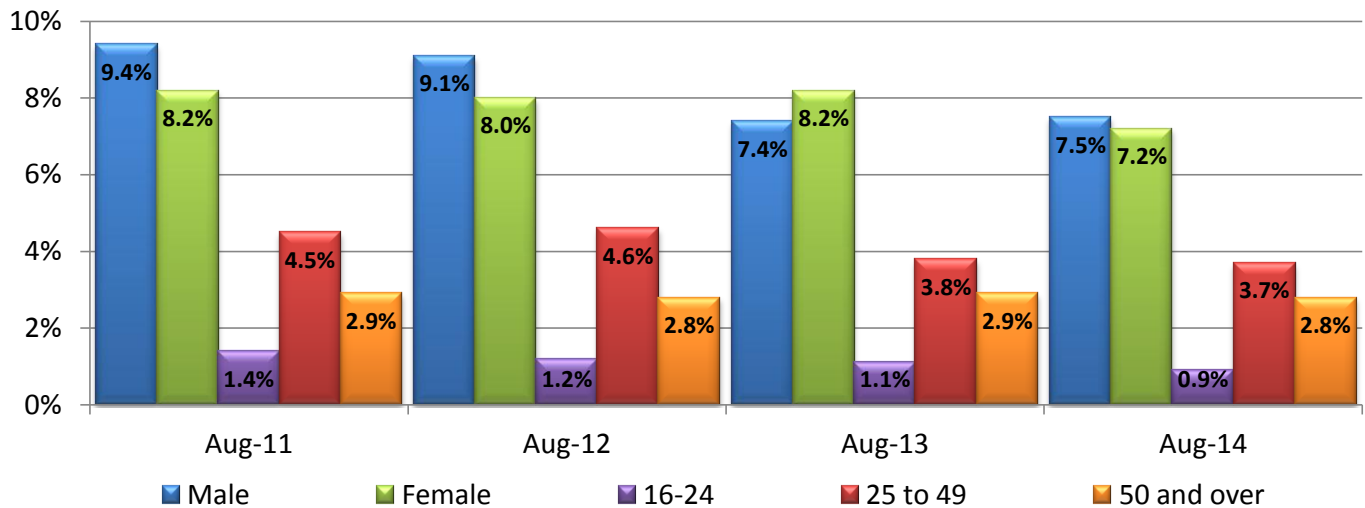
Benefits Claimants Rate (16-64) Benchmark (NOMIS)



Micklegate

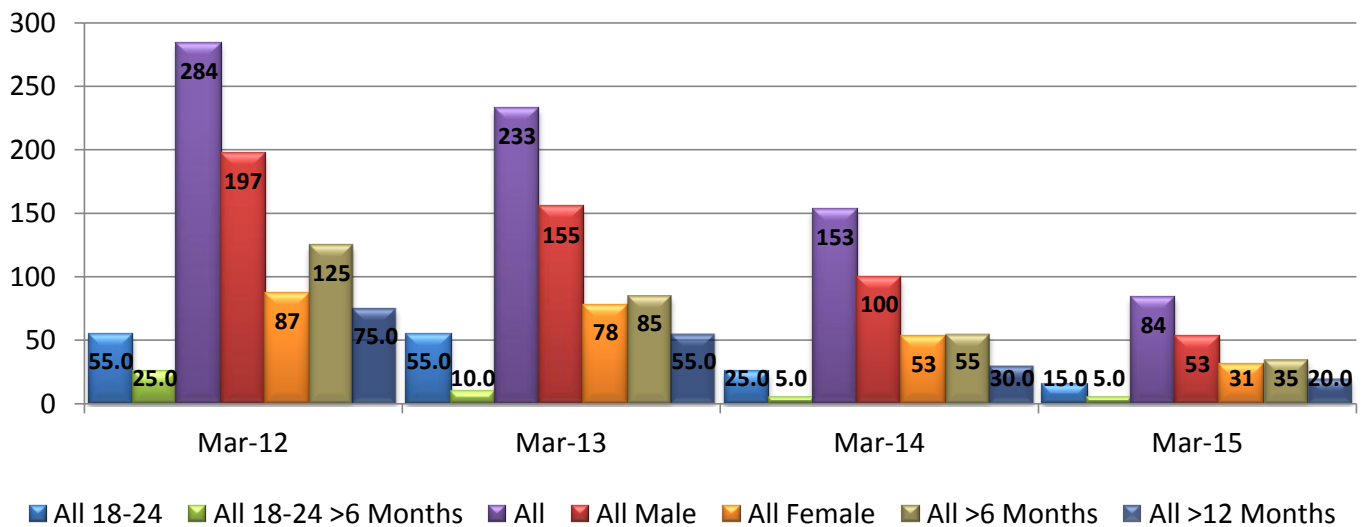


Total Ward Claimant Rate (Age and Gender) Benchmark (NOMIS)

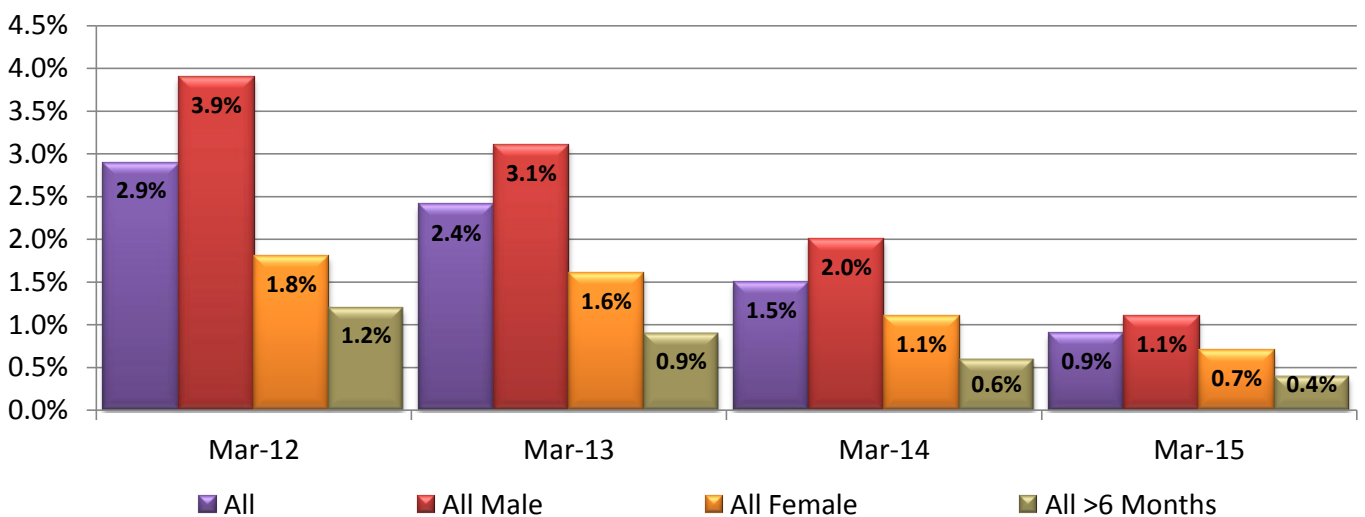


Economy

JSA Claimants Numbers (NOMIS) By Ward

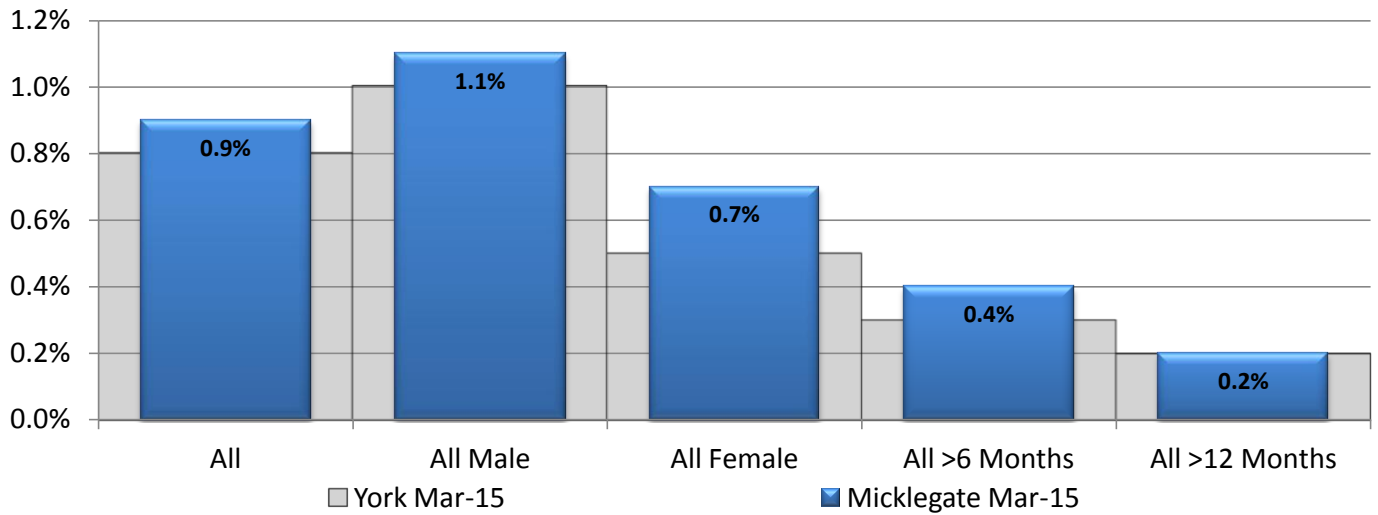


JSA Claimants Rate (NOMIS 16-64) By Ward



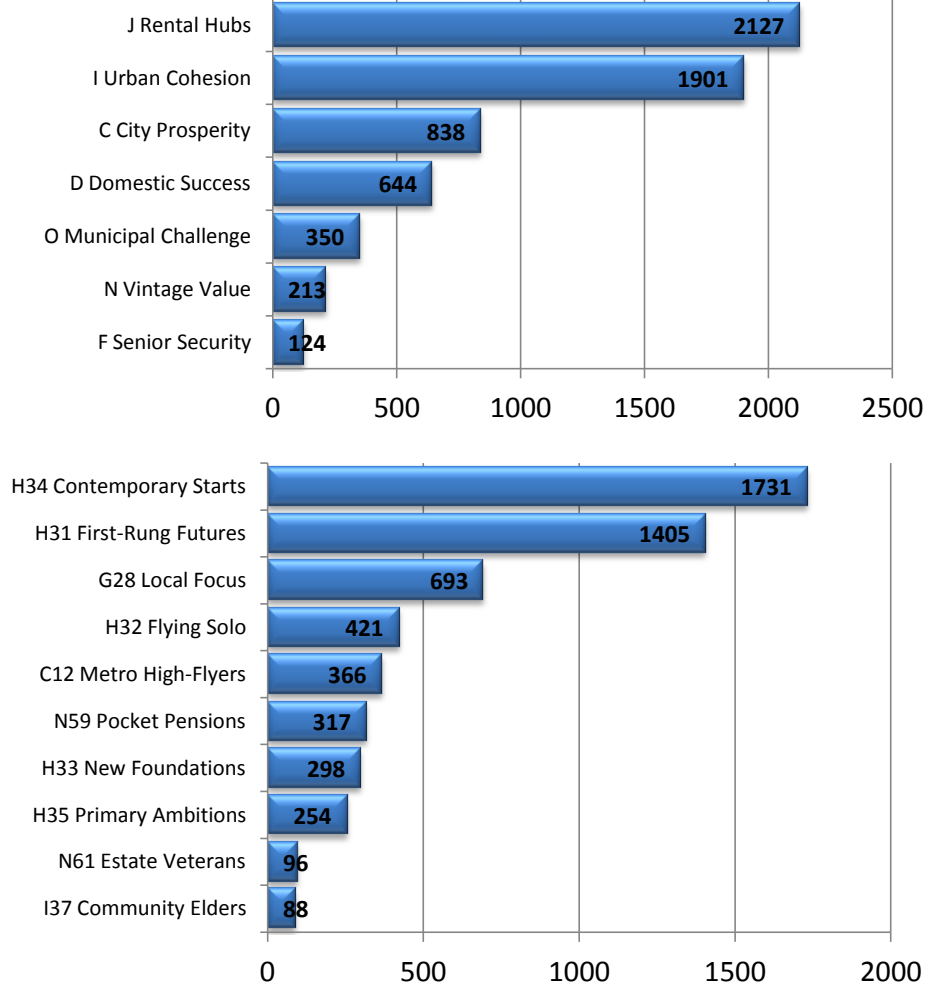


JSA Claimants Rate Benchmark (NOMIS 16-64)



Household Types

Experian Groups (Experian 2014)



Top 10 Types

This profile was created by the Business Intelligence Team.
Contact business.intelligence@york.gov.uk for further information.



Glossary

Page 1	BME – Black and Minority Ethnic community	
	NVQ – National Vocational Qualification	
Page 2	Census – 2011 survey carried out by the Office for National Statistics	www.ons.gov.uk/census
Page 5	APHO – Association of Public Health Observatories	http://www.apho.org.uk
	COPD – Chronic obstructive pulmonary disease	
	SRR/SAR/SMR - Standardised ratios which represent the decrease or increase in registration/admission/mortality for the cohort against the general population (100 is equal to general population).	
Page 6	ASB – Anti-Social Behaviour	
	NYP – North Yorkshire Police	
Page 7	CTC – Child Tax Credit	
	DWP – Department for Work and Pensions	http://www.gov.uk/dwp
	NOMIS – Official labour market statistics provided by the Office for National Statistics	http://www.nomisweb.co.uk/
	ESA – Employment and Support Allowance	
Page 8	JSA – Job Seekers Allowance	
Page 9	Experian – Classification system used to provide a detailed understanding of citizen's location, demographics, lifestyle and behaviour	