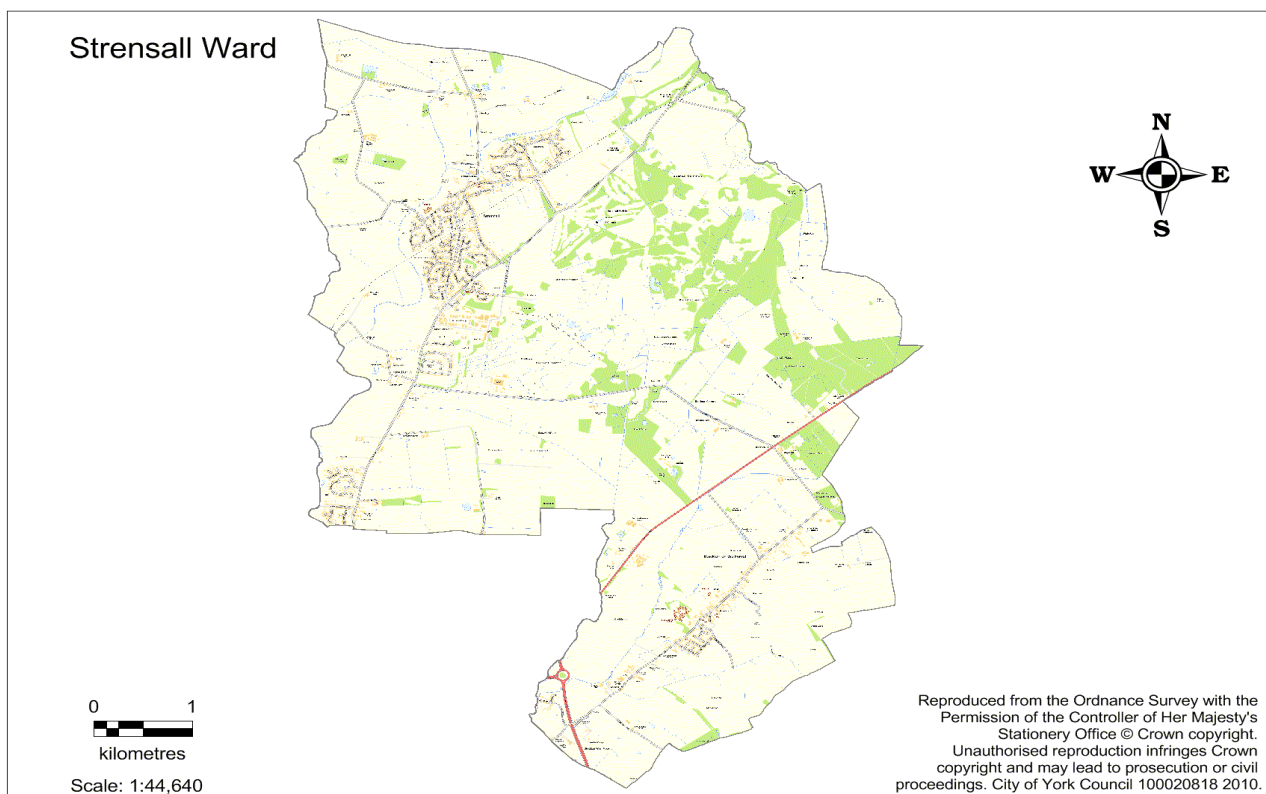




York Summary

- York has 204,439 residents with 9.8% from a black and minority ethnic community group. 83.9% are in good health, with 15.3% stating that they have some limitation in day to day activities.
- £537.41 was the Average Weekly Household Income in 2011/2012 (£405.83 in 2007/2008).
- 66% own their own home, either outright or with a mortgage, 18% are private renters and 14% are social tenants.
- 73.5% of residents have a NVQ level 1 - 4 qualification and 18.0% have no qualifications at all.
- 10.6% of children live in poverty and there are 9.0% of households in fuel poverty.
- 6.2% of the working population (aged 16-64) claim out of work benefits and 0.5% claim job seekers allowance.



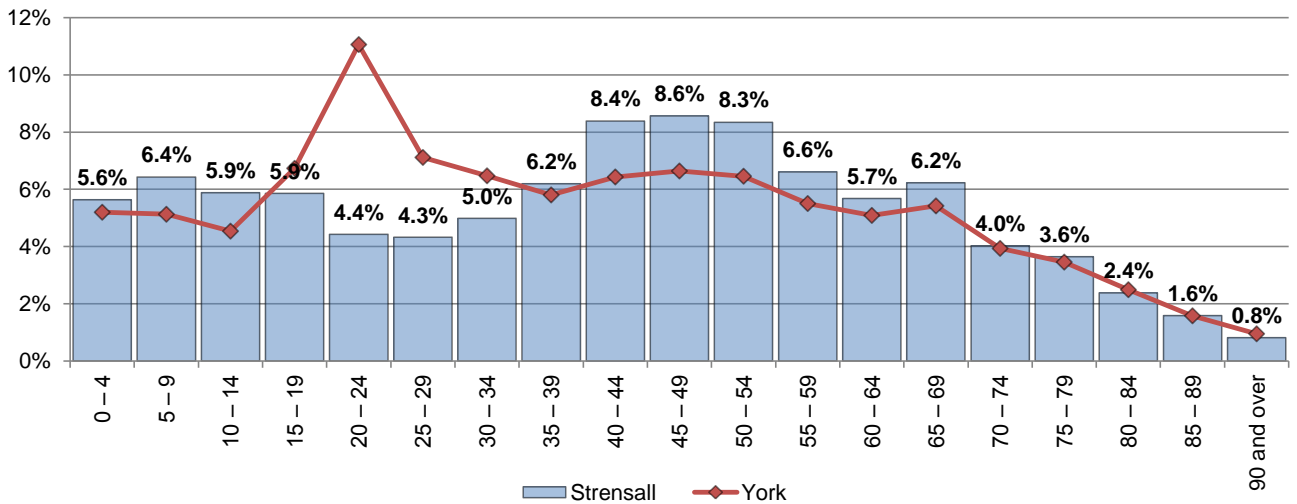
Ward Summary

- Strensall has 8,183 residents with 4.9% from a black and minority ethnic community group. 86.4% are in good health, with 13.4% stating that they have some limitation in day to day activities.
- £606.24 was the Average Weekly Household Income in 2011/2012 (£480.00 in 2007/2008).
- 80% own their own home, either outright or with a mortgage, 13% are private renters and 6% are social tenants.
- 75.2% of residents have a NVQ level 1 - 4 qualification and 16.3% have no qualifications at all.
- 3.5% of children live in poverty and there are 6.1% of households in fuel poverty.
- 4.6% of the working population claim out of work benefits and 0.2% claim job seekers allowance.

Strensall Ward Profile



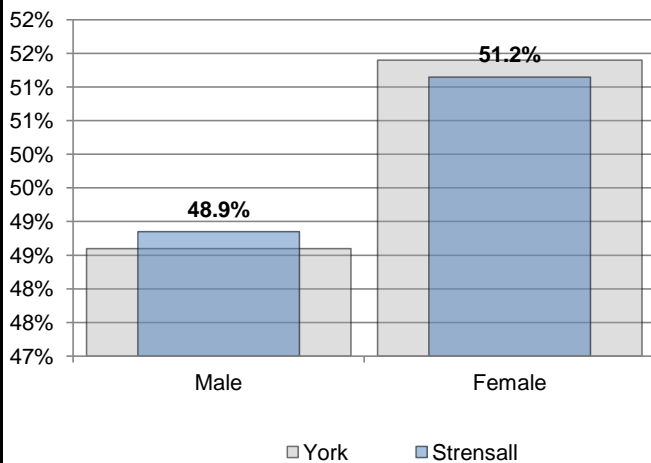
Population by Age



Source: ONS - 2014 Ward population estimates

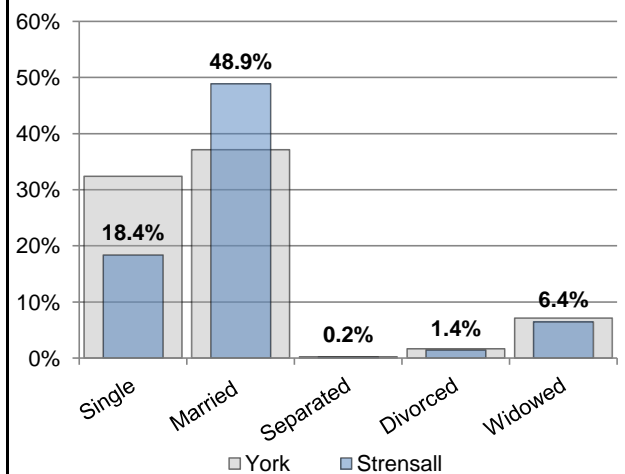
Census 2011 Update

Gender



Source: Census 2011

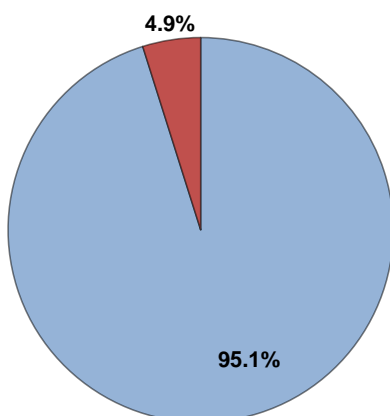
Marital Status



Source: Census 2011

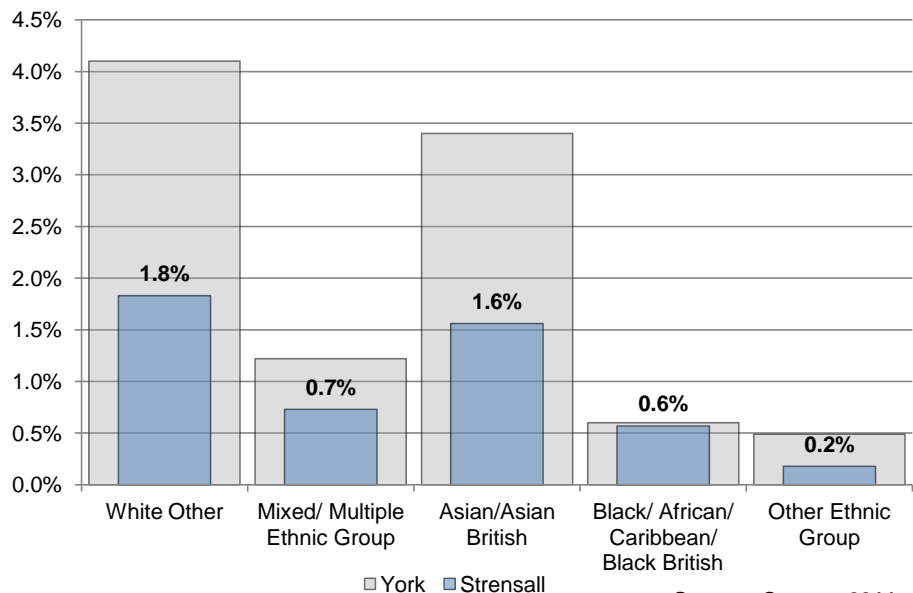
Ethnicity

Ward Ethnicity



■ White British
■ BME Community

BME Community (does not include White British)



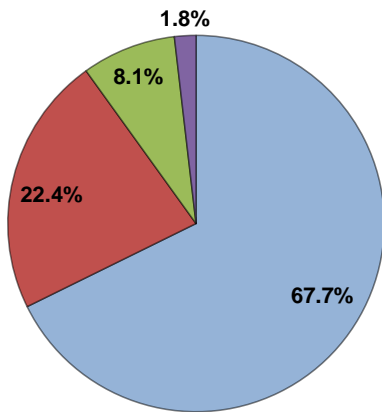
Source: Census 2011

Strensall Ward Profile

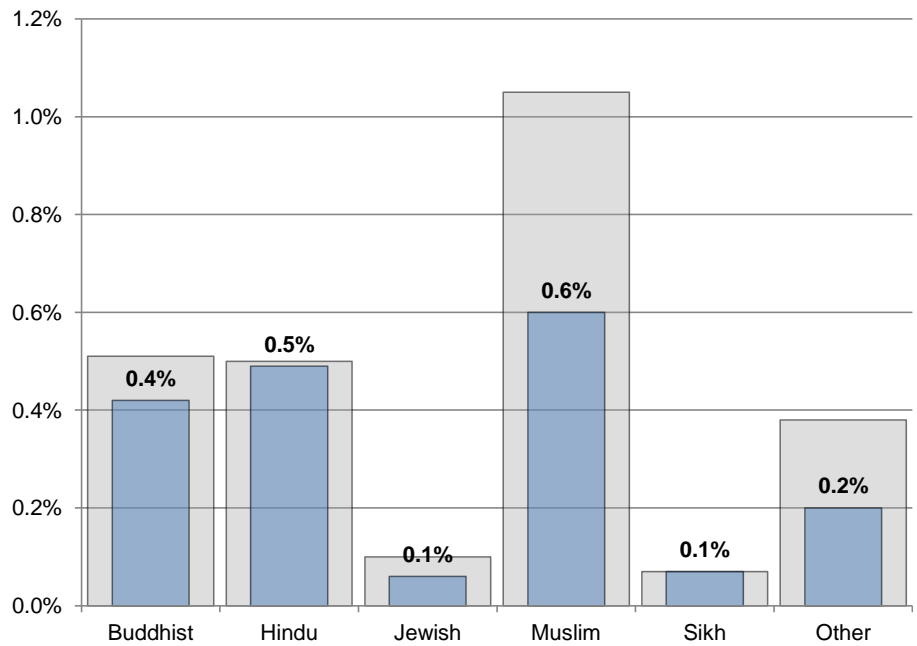


Religion

Other Religions



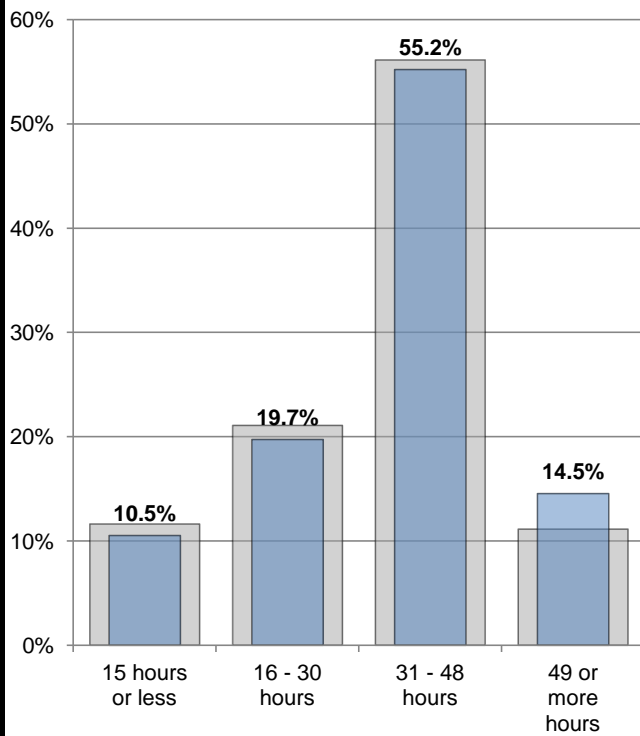
- Christian
- None
- Not stated
- Other Religions



■ York ■ Strensall

Source: Census 2011

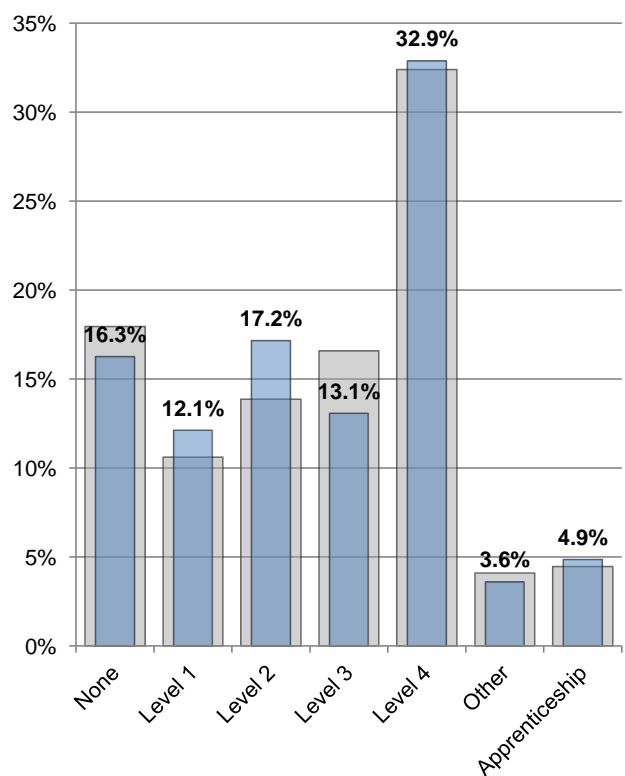
Hours Worked



■ York ■ Strensall

Source: Census 2011

Qualifications



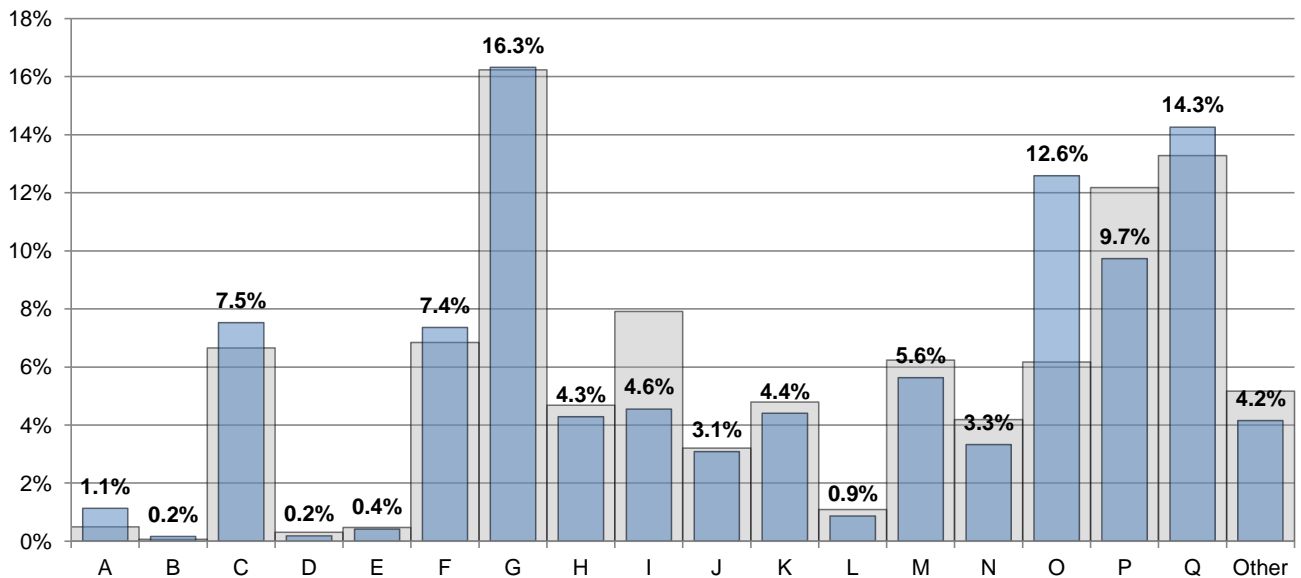
■ York ■ Strensall

Source: Census 2011

Strensall Ward Profile



Industry



A: Agriculture, forestry and fishing, B: Mining and quarrying, C: Manufacturing, D: Electricity, gas, steam and air conditioning supply, E: Water supply; sewerage, waste management and remediation activities, F: Construction

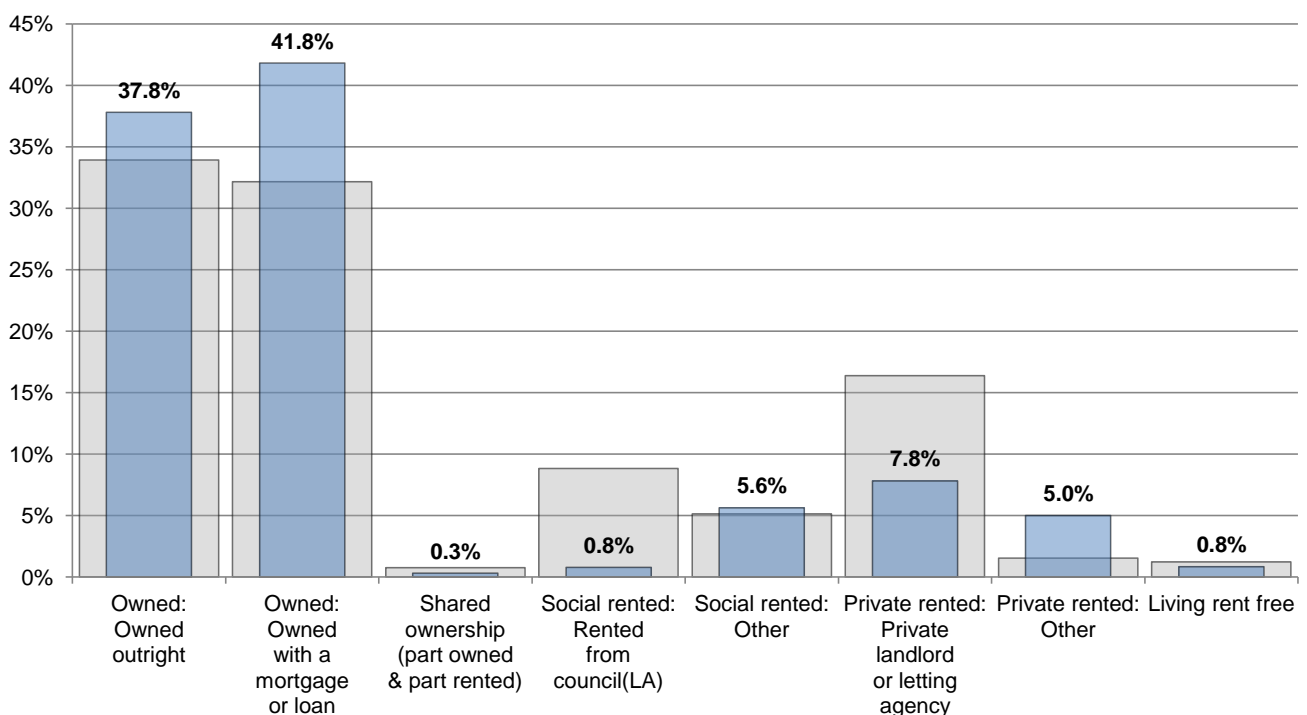
G: Wholesale and retail trade; repair of motor vehicles and motor cycles, H: Transport and storage, I: Accommodation and food service activities, J: Information and communication, K: Financial and insurance activities, L: Real estate activities

M: Professional, scientific and technical activities, N: Administrative and support service activities, O: Public administration and defence; compulsory social security, P: Education, Q: Human health and social work activities

■ York ■ Strensall

Source: Census 2011

Tenure



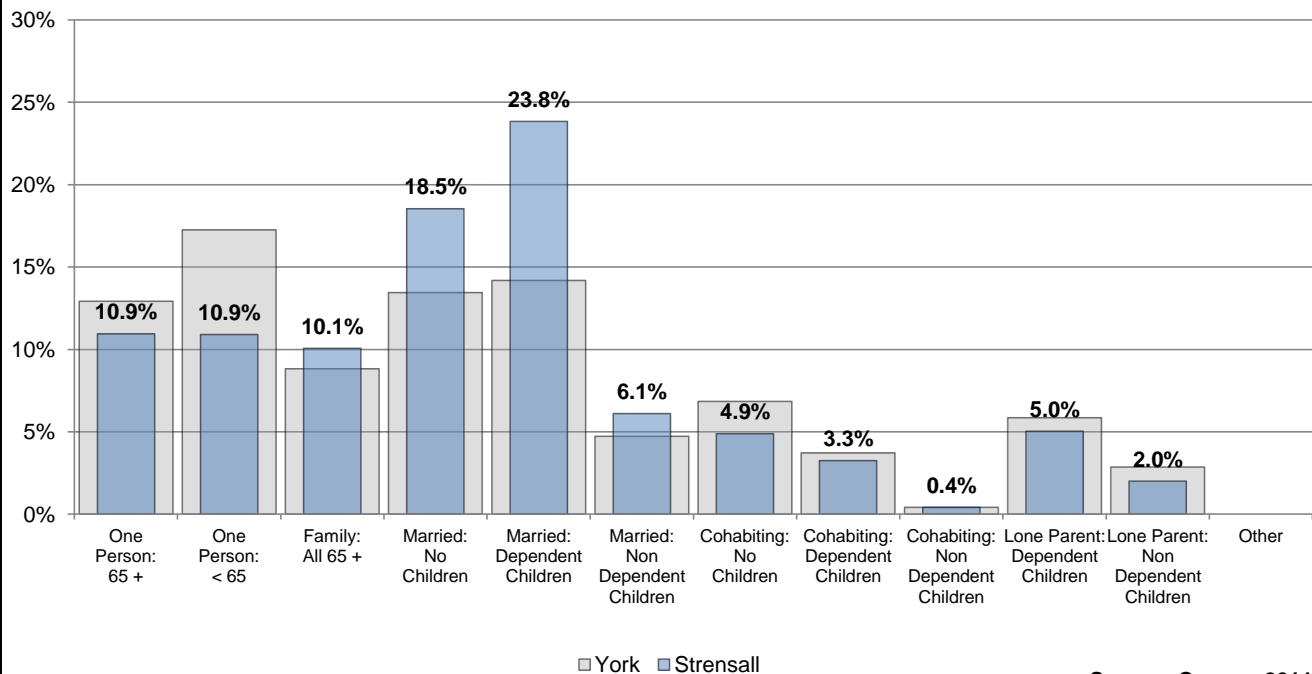
■ York ■ Strensall

Source: Census 2011

Strensall Ward Profile



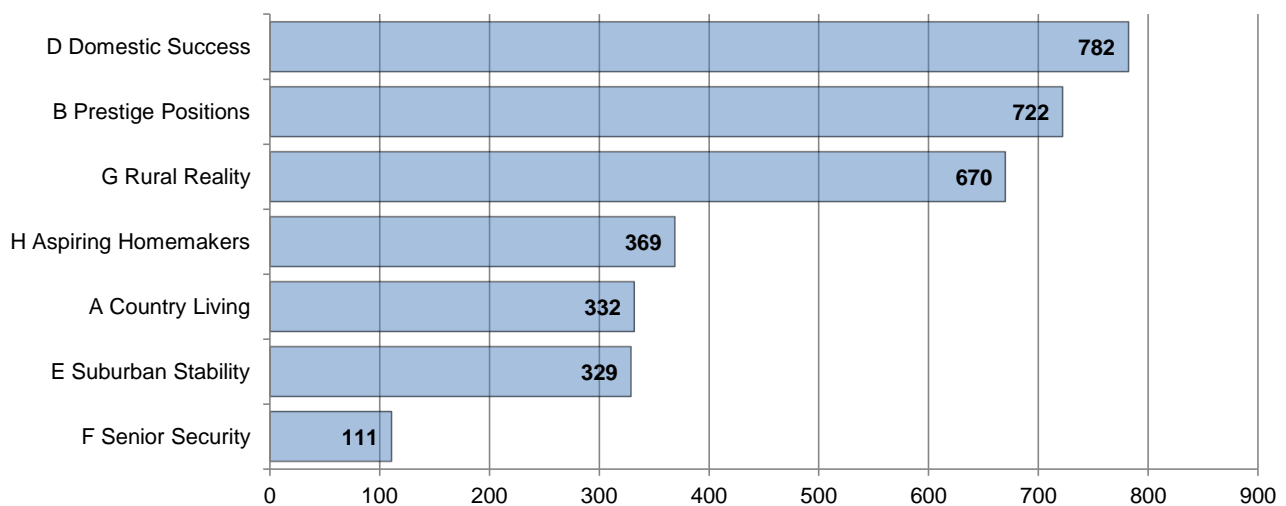
Household Composition



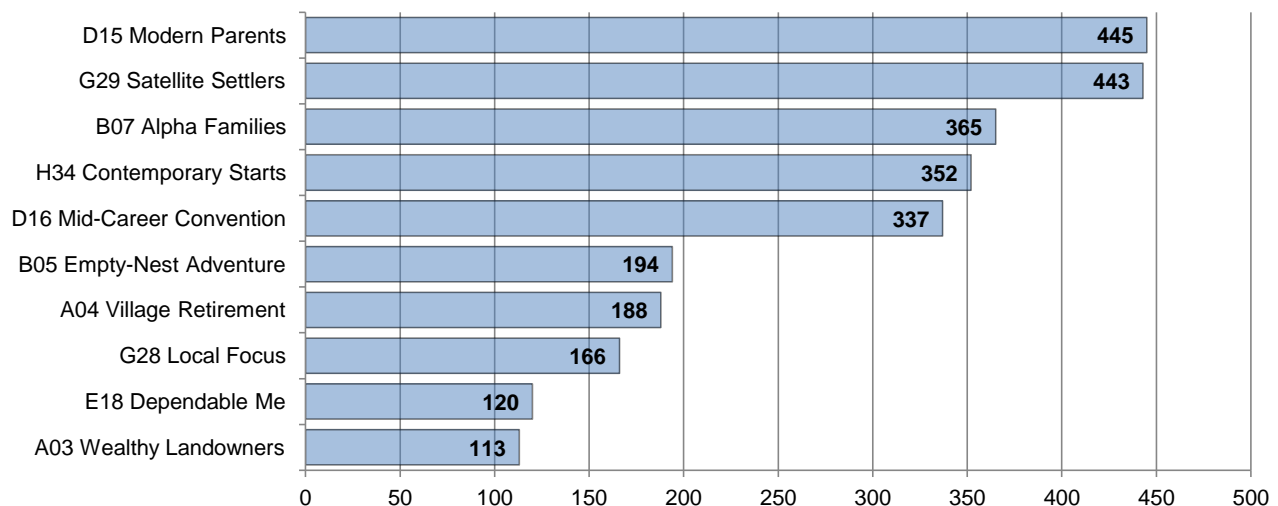
Source: Census 2011

Household Types

Experian Groups (2016)



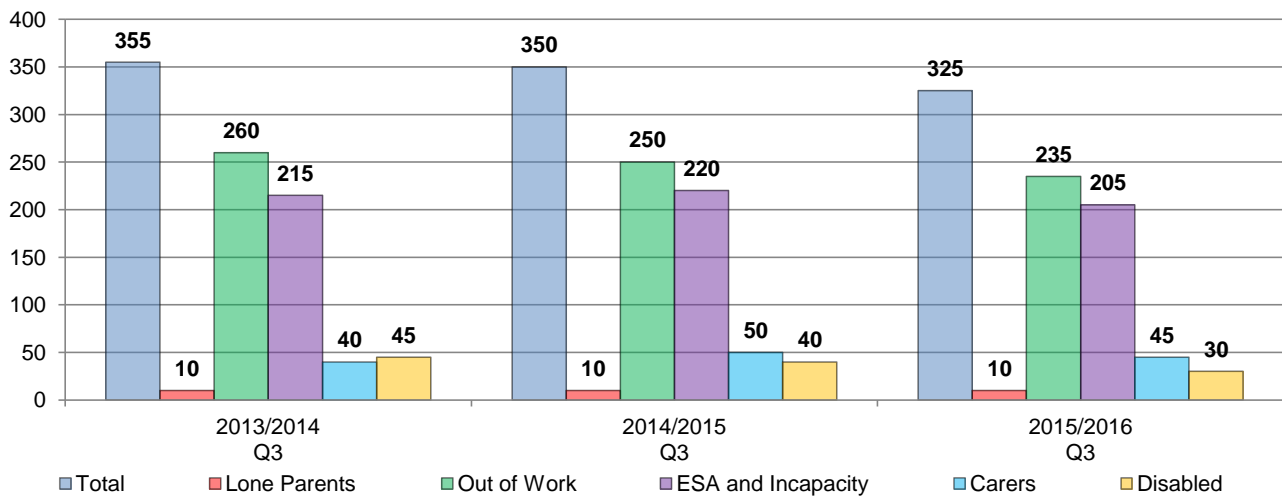
Experian Types (2016)





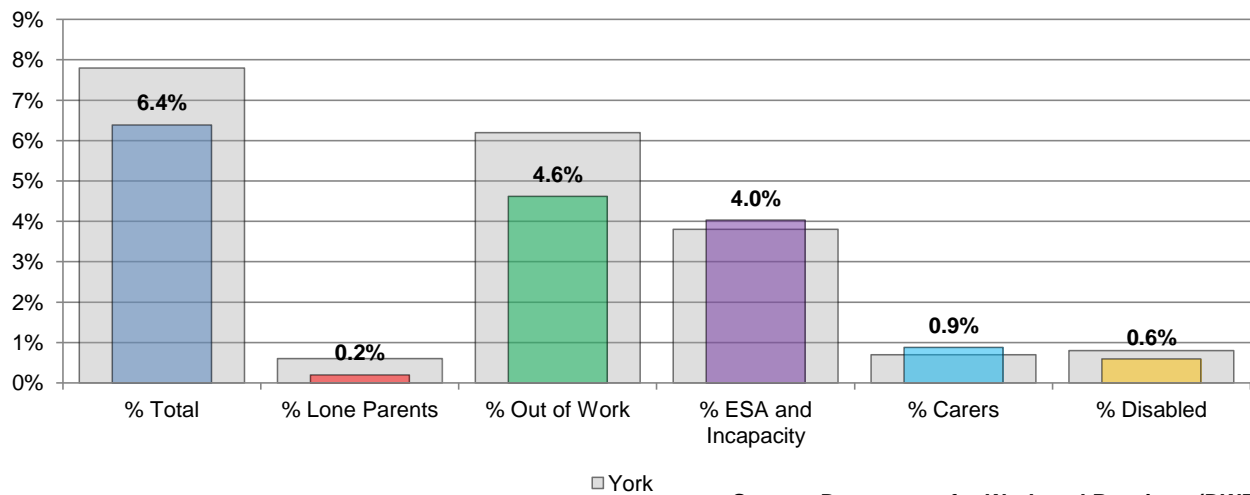
Economy

**Benefit Claimant Numbers
Working age Population (16-64)**



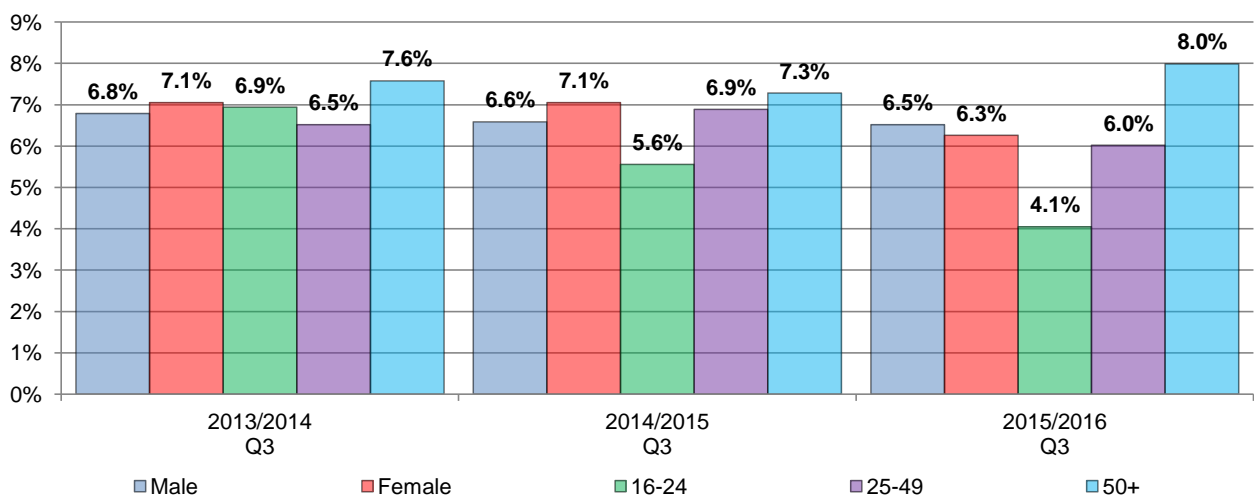
Source: Department for Work and Pensions (DWP)

**Benefit Claimant Rate
Working age Population (16-64)**
Q3 2015/2016



Source: Department for Work and Pensions (DWP)

**Total Benefit Claimant Rate (Age and Gender)
Working age Population (16-64)**

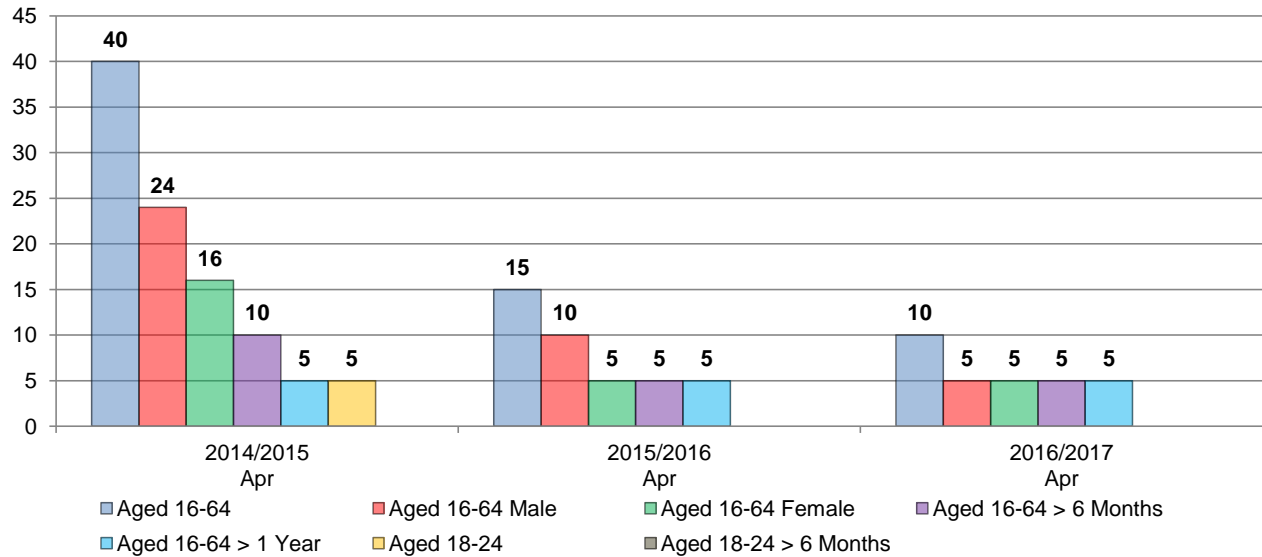


Source: Department for Work and Pensions (DWP)



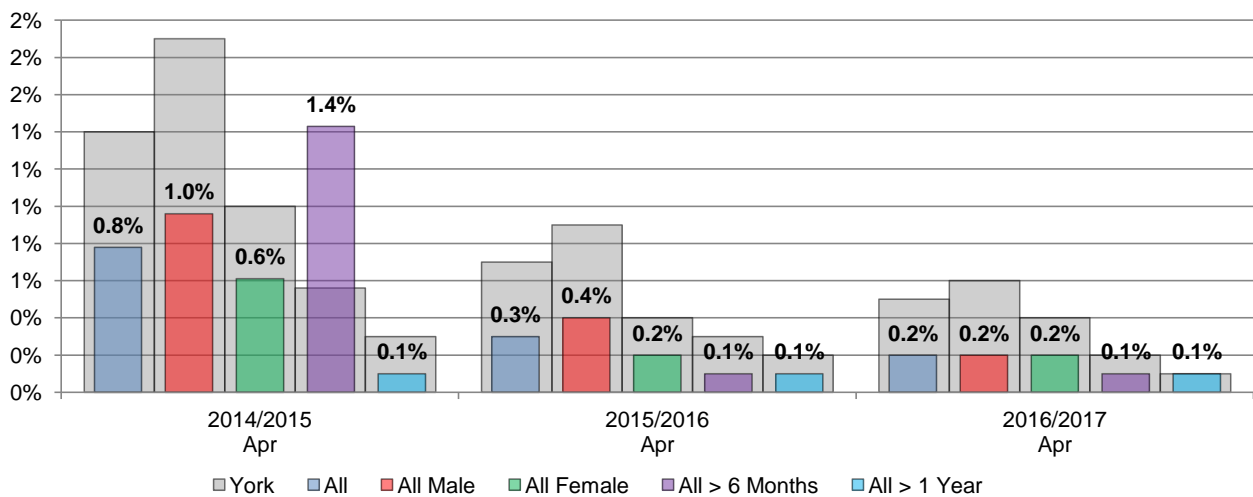
Economy

JSA Claimant Numbers



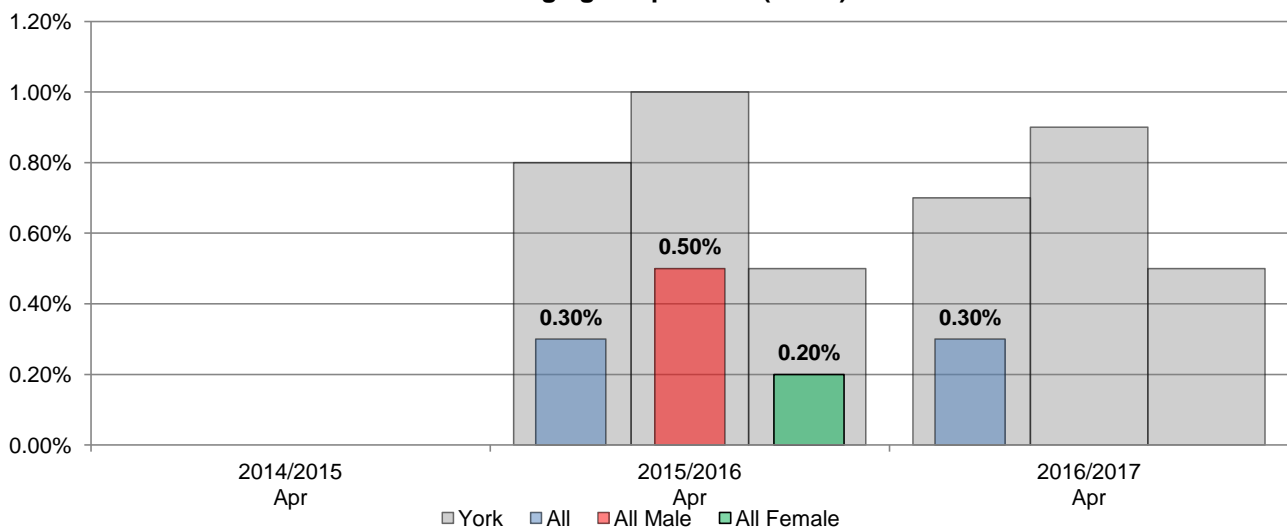
Source: Office for National Statistics (ONS)

JSA Claimant Rate (Age and Gender) Working age Population (16-64)



Source: Office for National Statistics (ONS)

JSA and Universal Credit (out of work) Claimant Rate Working age Population (16-64)



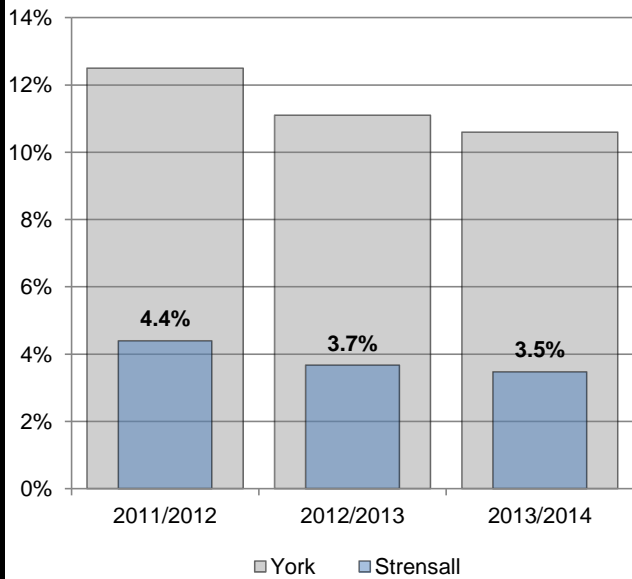
Source: Office for National Statistics (ONS)



Poverty

Child Poverty

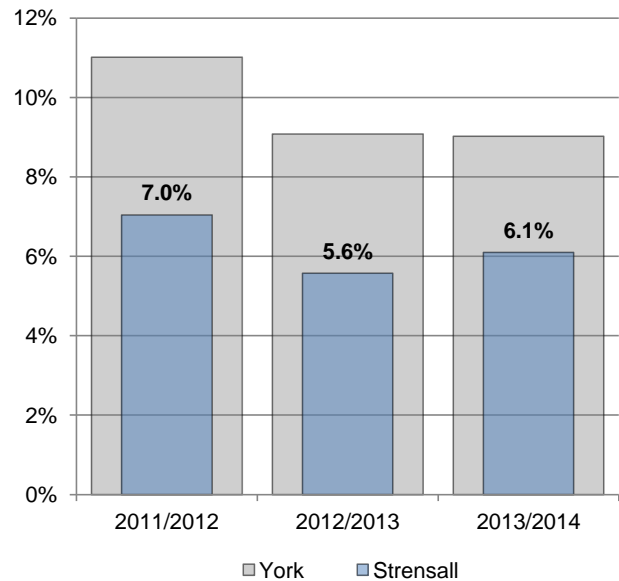
The proportion of children living in families in receipt of out-of-work (means-tested) benefits or in receipt of tax credits where their reported income is less than 60 per cent of UK median income.



Source: HM Revenue & Customs

Fuel Poverty

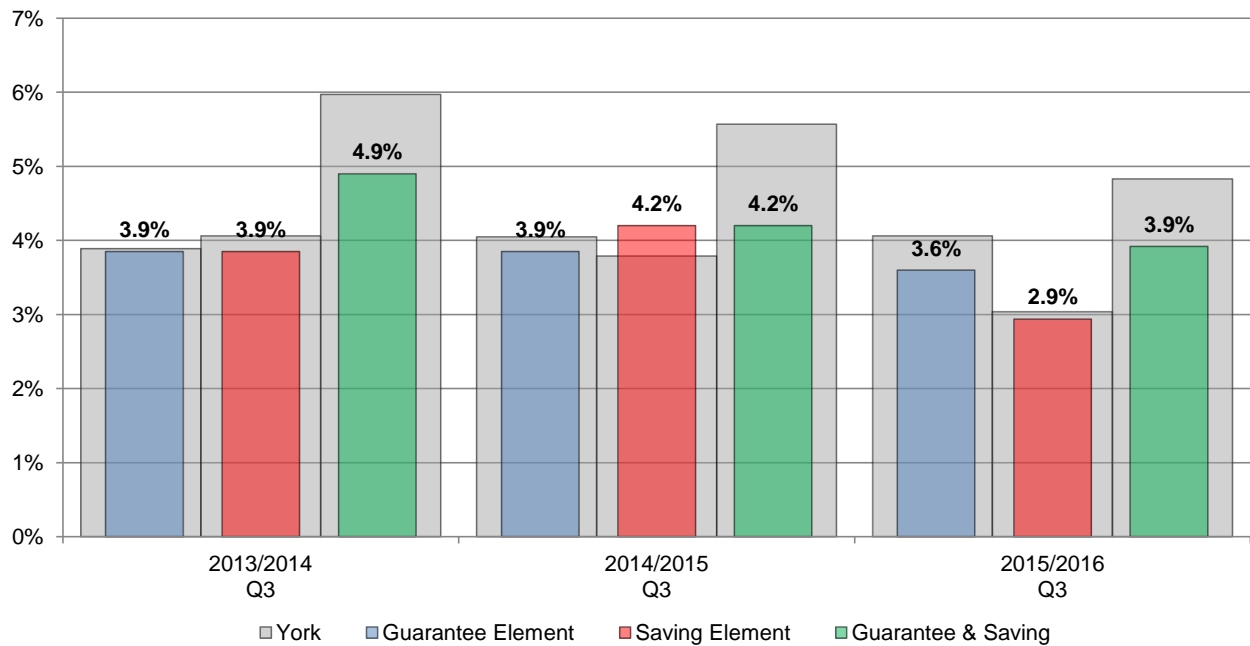
A household is said to be fuel poor if it needs to spend more than 10% of its income on fuel to maintain an adequate standard of warmth.



Source: Department of Energy & Climate Change

Pension Credit

Pension Credit is an income-related benefit made up of 2 parts - Guarantee Credit and Savings Credit.



Source: Department for Work and Pensions (DWP)

Strensall Ward Profile



Indices of Multiple Deprivation

The IMD measures and rates a number of different domains affecting quality of life including income, employment, education and skills, health and disability, crime, barriers to services and quality of living environments.



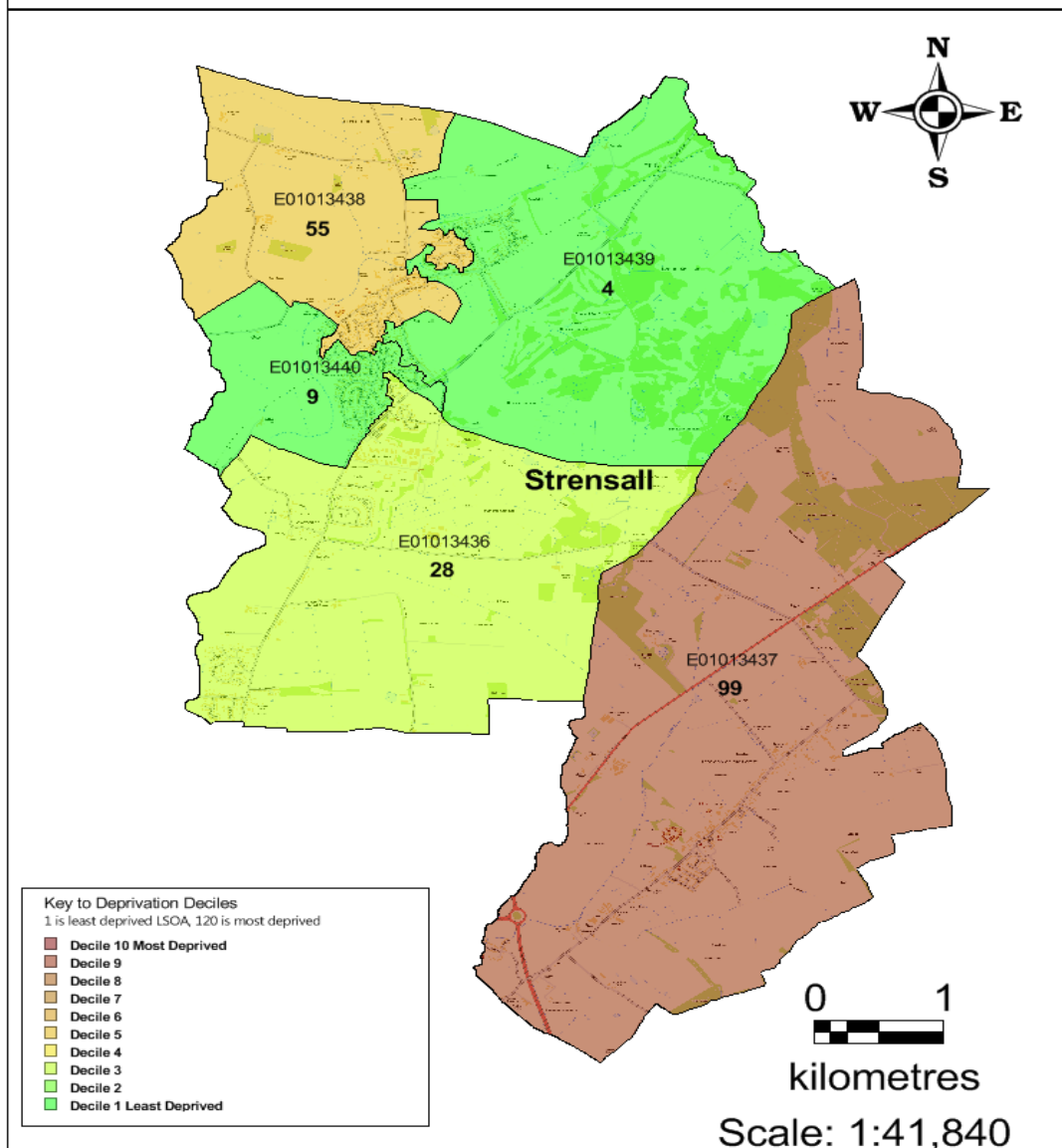
Ward Rank in York (Low is Bad)
12 out of 21

13 out of 21

12 out of 21

Source: Department for Communities and Local Government (DCLG)

Index of Multiple Deprivation 2015 - Strensall Ward: breakdown by LSOA



Produced by:

Business Intelligence Hub

Created

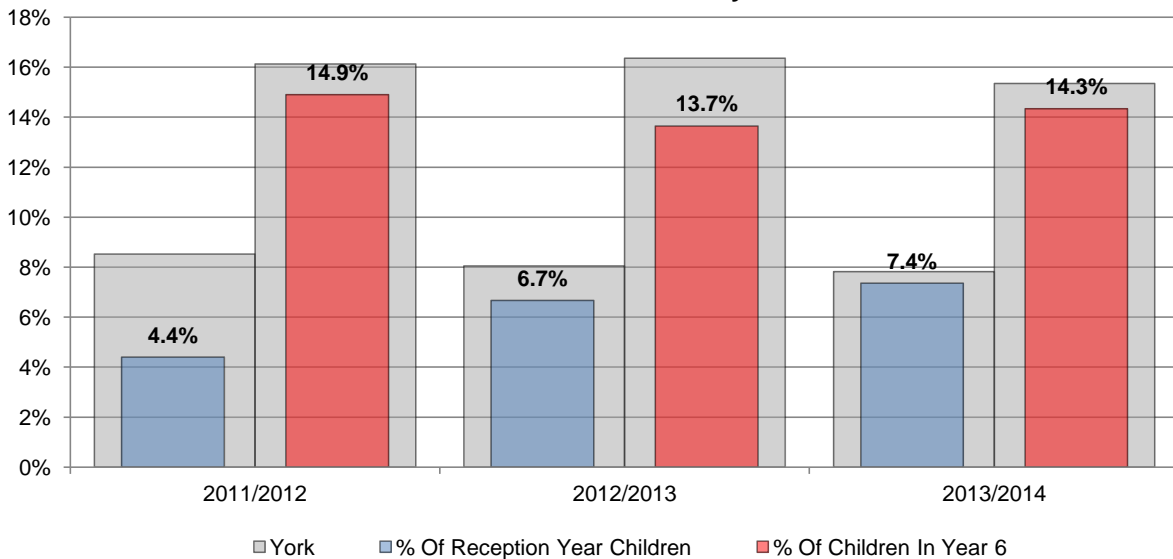
09/10/2015

Reproduced from the Ordnance Survey with the Permission of the Controller of Her Majesty's Stationery Office © Crown copyright. Unauthorised reproduction infringes Crown copyright and may lead to prosecution or civil proceedings. City of York Council 100020818 2010.



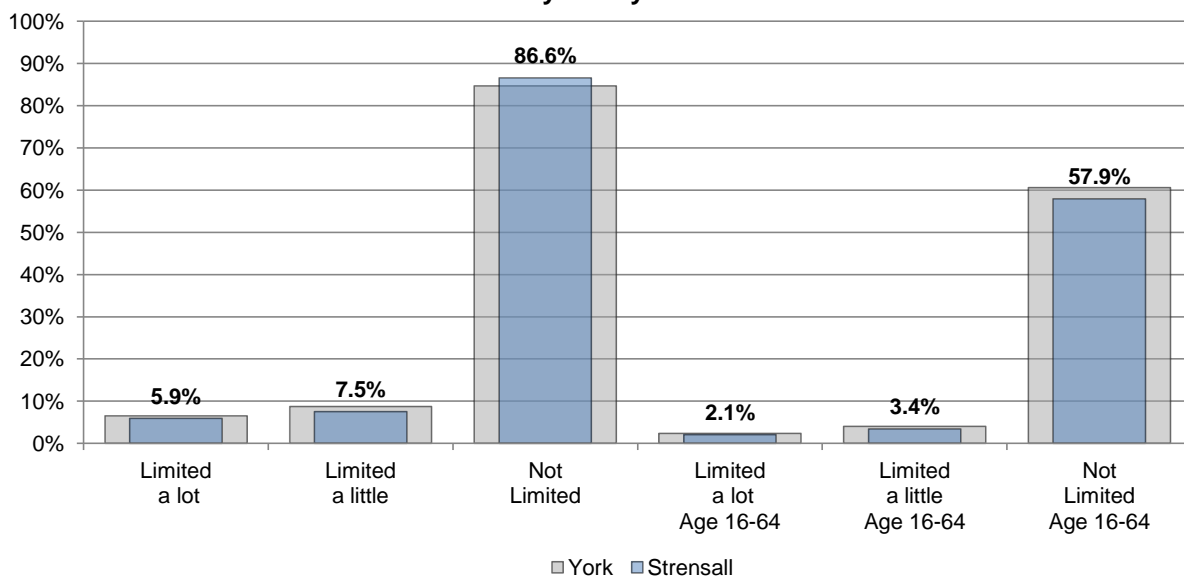
Health and Wellbeing

Childhood Obesity



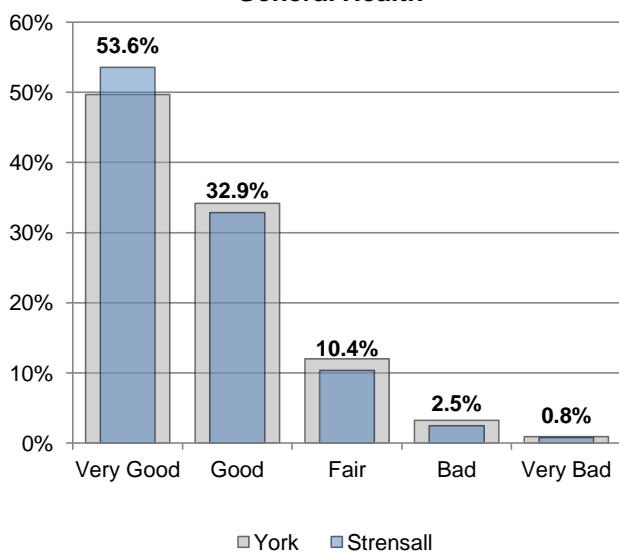
Source: National Child Measurement Programme (NCMP)

Day to Day Activities



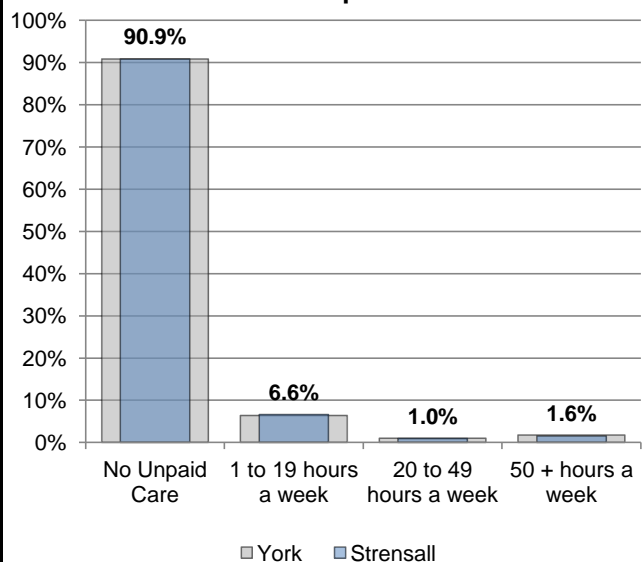
Source: Census 2011

General Health



Source: Census 2011

Provide Unpaid Care

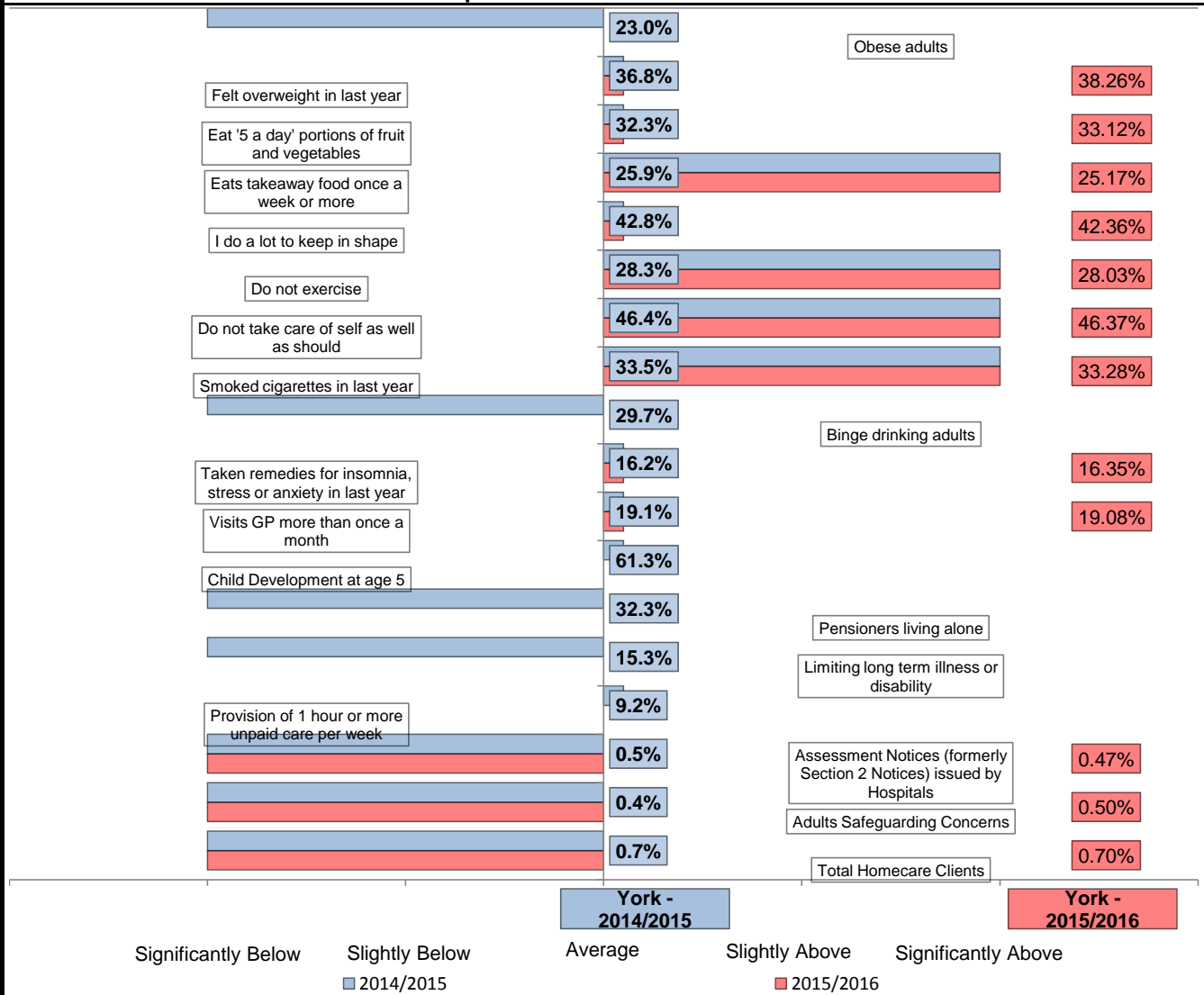


Source: Census 2011

Strensall Ward Profile

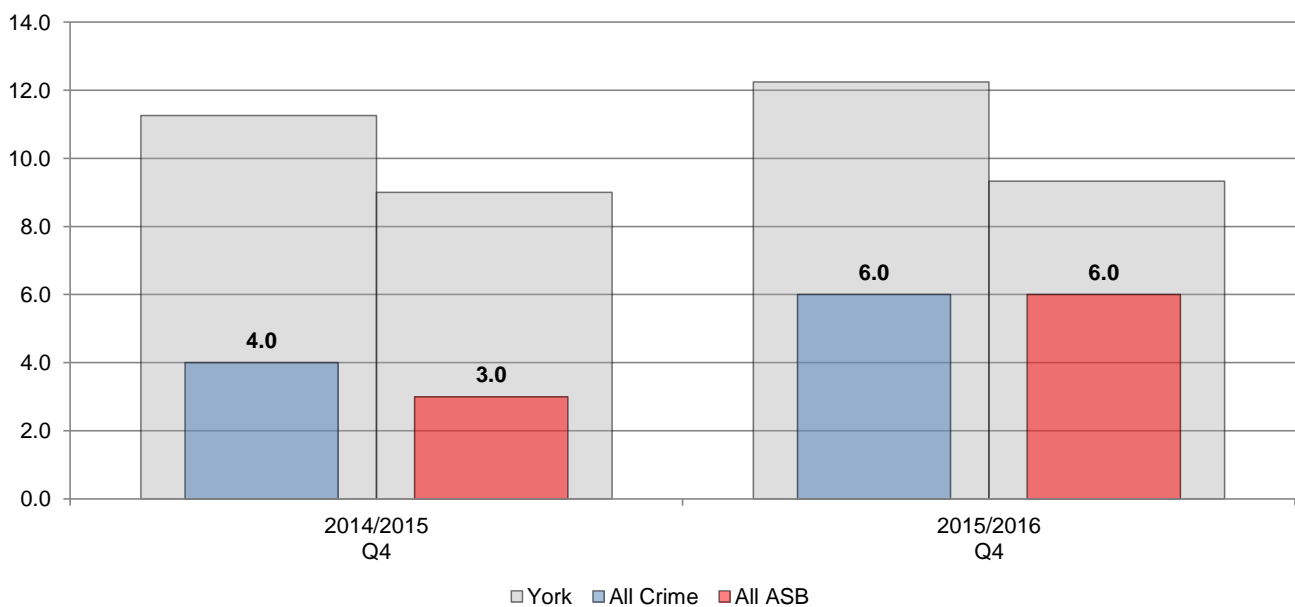


Experian & Public Health Data



Crime and Anti-Social Behaviour

Total Crime and Total Anti-Social Behaviour per 1,000 population

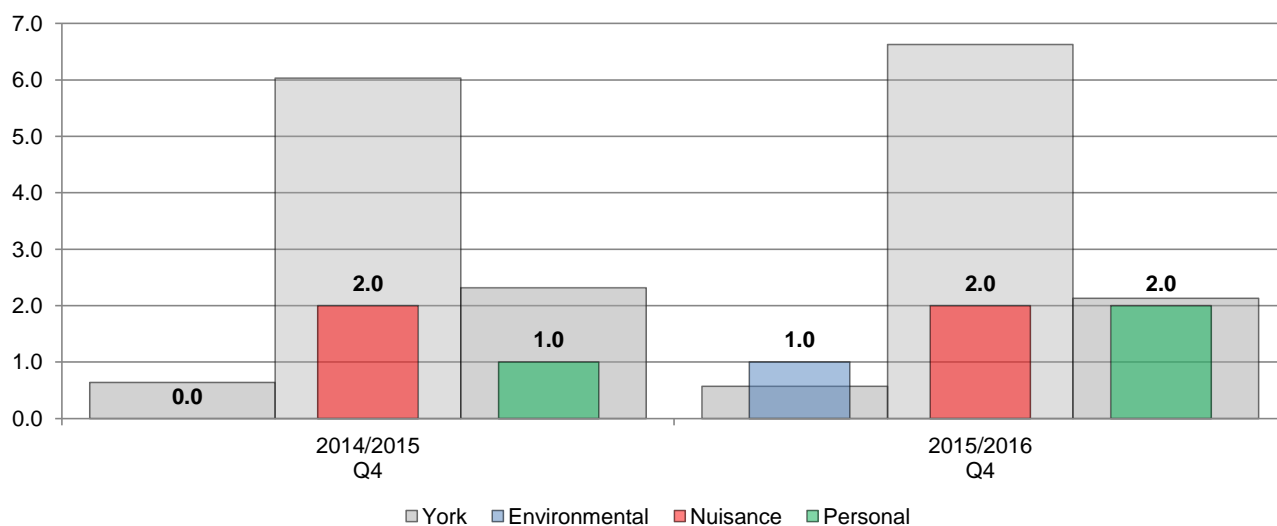


Source: North Yorkshire Police

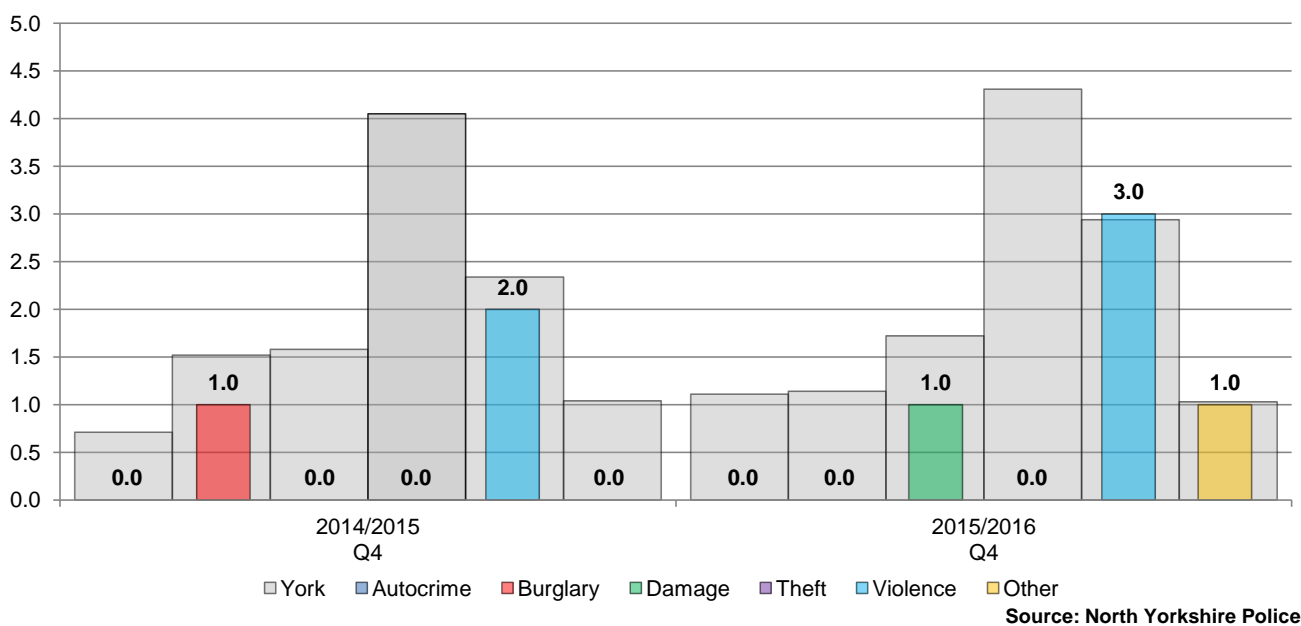
Strensall Ward Profile



ASB per 1,000 population

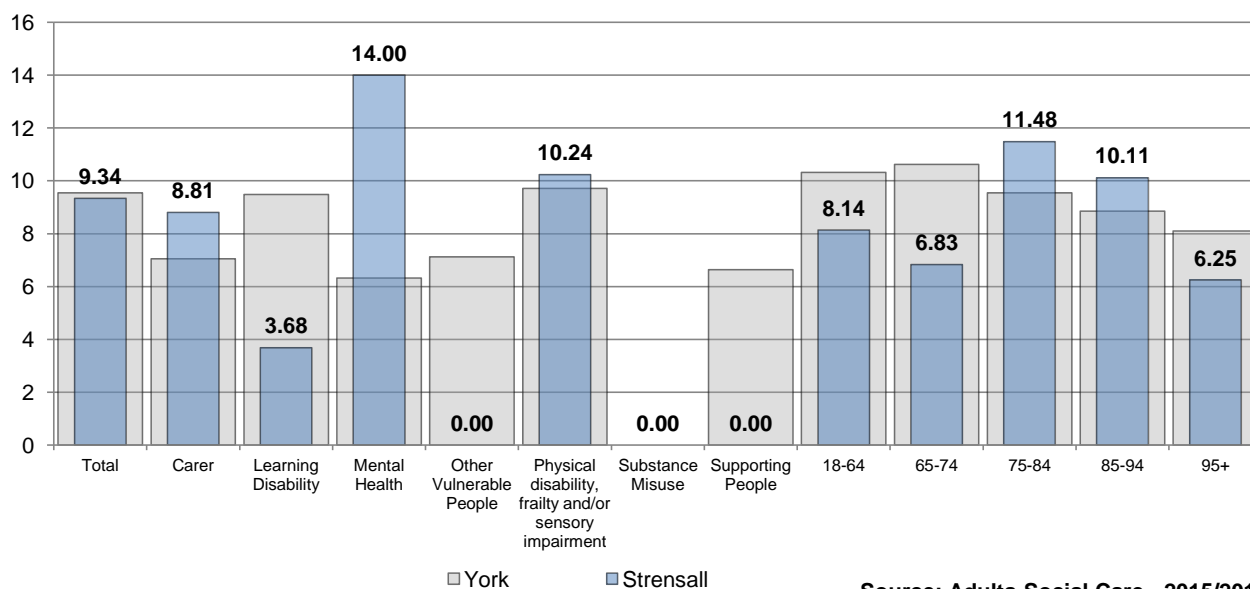


Crime Rate per 1,000 population



Adult Social Care

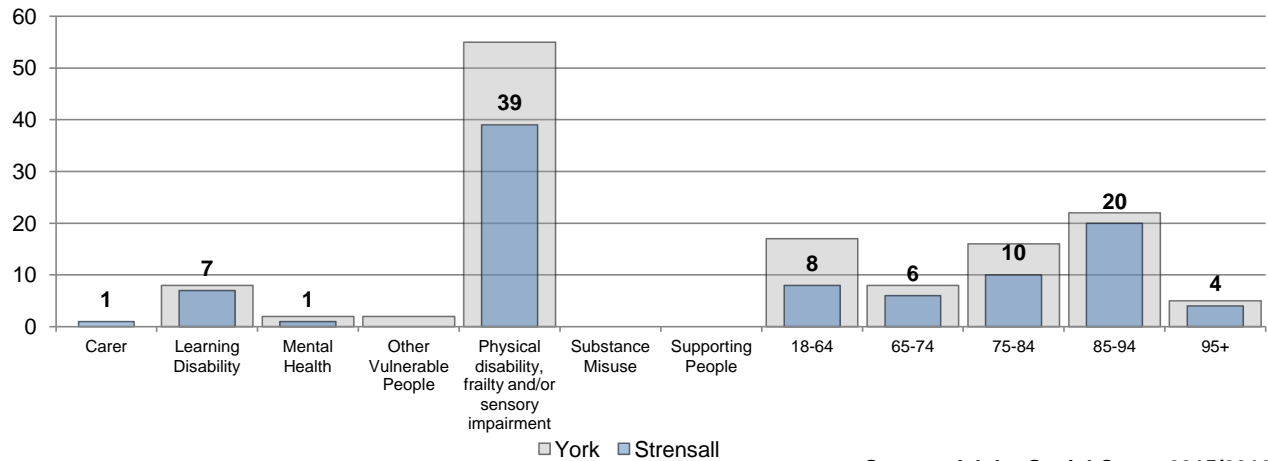
Average Weekly Homecare Hours by Client Type and Age



Strensall Ward Profile

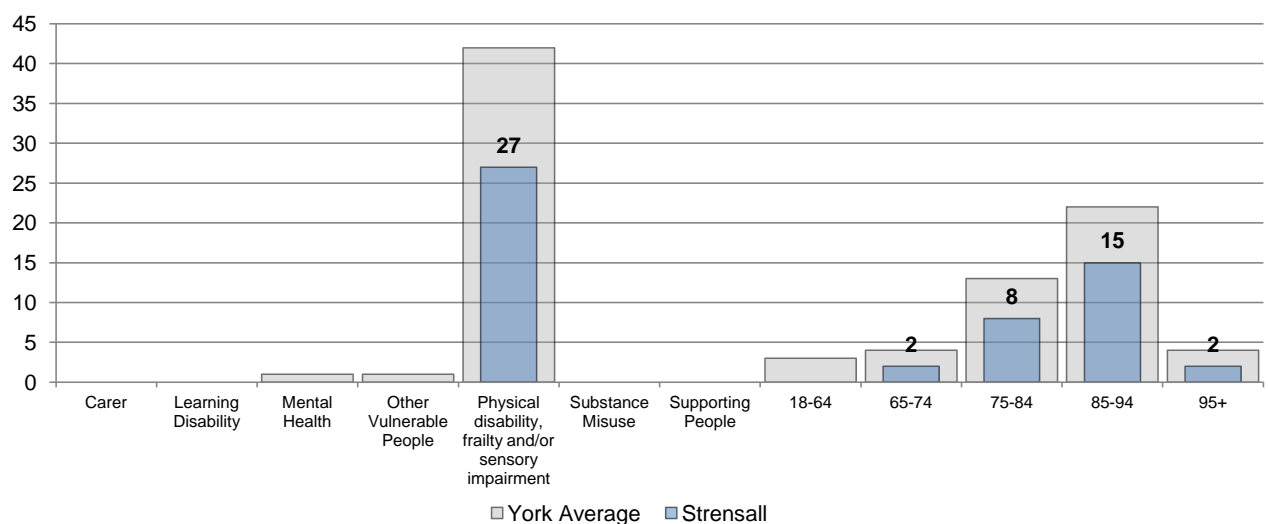


Homecare Clients by Type and Age



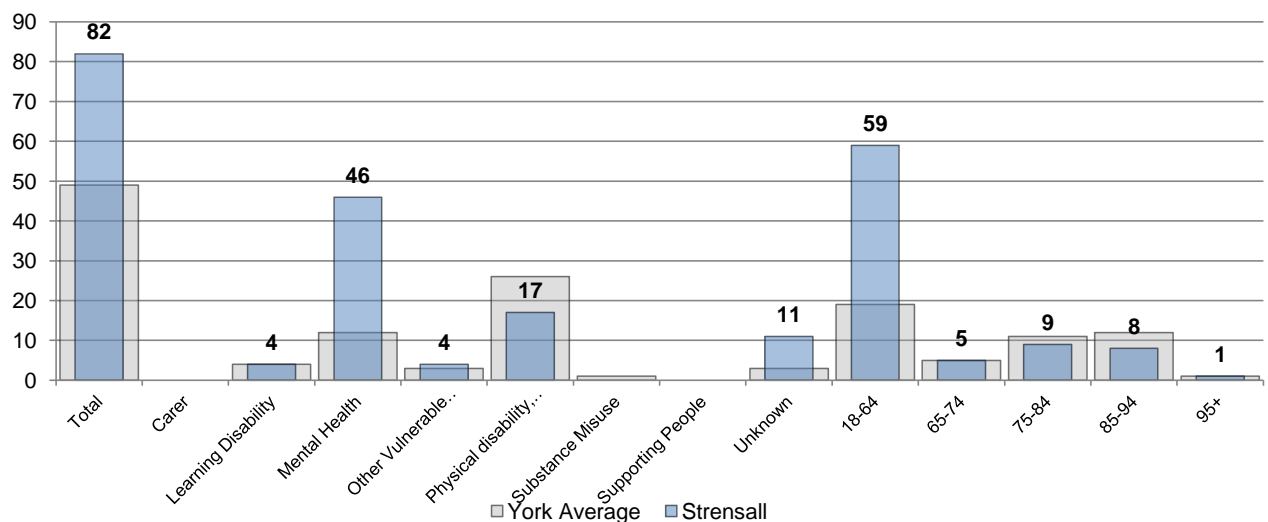
Source: Adults Social Care - 2015/2016

Assessment Notices (formerly Section 2 Notices) issued by Hospitals by Primary Client Type and Age



Source: Adults Social Care - 2015/2016

Adults Safeguarding Concerns by Client Type and Age



Source: Adults Social Care - 2015/2016

Strensall Ward Profile



Experian Groups
D Domestic Success
Families with children, upmarket suburban homes, owned with a mortgage, 3 or 4 bedrooms, high internet use.
B Prestige Positions
High value detached homes, married couples, managerial and senior positions, supporting students and older children, high assets and investments.
G Rural Reality
Rural locations, village and outlying houses, agricultural employment, most are homeowners, affordable value homes.
H Aspiring Homemakers
Younger households, full-time employment, private suburbs, affordable housing costs, starter salaries.
A Country Living
Rural locations, well-off homeowners, attractive detached homes, higher self-employment, high car ownership.
E Suburban Stability
Older families, some adult children at home, suburban mid-range homes, 3 bedrooms, have lived at same address some years.
F Senior Security
Elderly singles and couples, homeowners, comfortable homes, additional pensions above state, don't like new technology.
Experian Types
D15 Modern Parents
Families with school age children, modern housing, good quality detached homes, double income families, own tablets.
G29 Satellite Settlers
Mature households, live in larger villages, close to transport links, own pleasant homes, online groceries.
B07 Alpha Families
Married couples, two professional careers, school age children, high salaries, large mortgage, online shopping to save time.
H34 Contemporary Starts
Cohabiting couples and singles, late 20s and 30s, some have young kids, modern housing, owned or rented, further away from centres, use ebay.
D16 Mid-Career Convention
Married couples with kids, traditional suburbs, professional jobs, likely to have life cover, high proportion with mortgage.
B05 Empty-Nest Adventure
Couples aged 56 and over, children have left home, live in long-term family home, book holidays and tickets online, comfortable detached homes.
A04 Village Retirement
Retired couples and singles, larger village location, like to be self-sufficient, enjoy uk holidays, most likely to play cricket and golf.
G28 Local Focus
Rural families, rent or own affordable homes, skilled trades, long distance from towns and cities, shop locally.
E18 Dependable Me
Mature singles, traditional suburbs, own lower value semis, have lived in same house 15 years, intermediate occupations.
A03 Wealthy Landowners
High value large detached homes, rural locations, own several cars, most likely to own a horse, mature married couples.