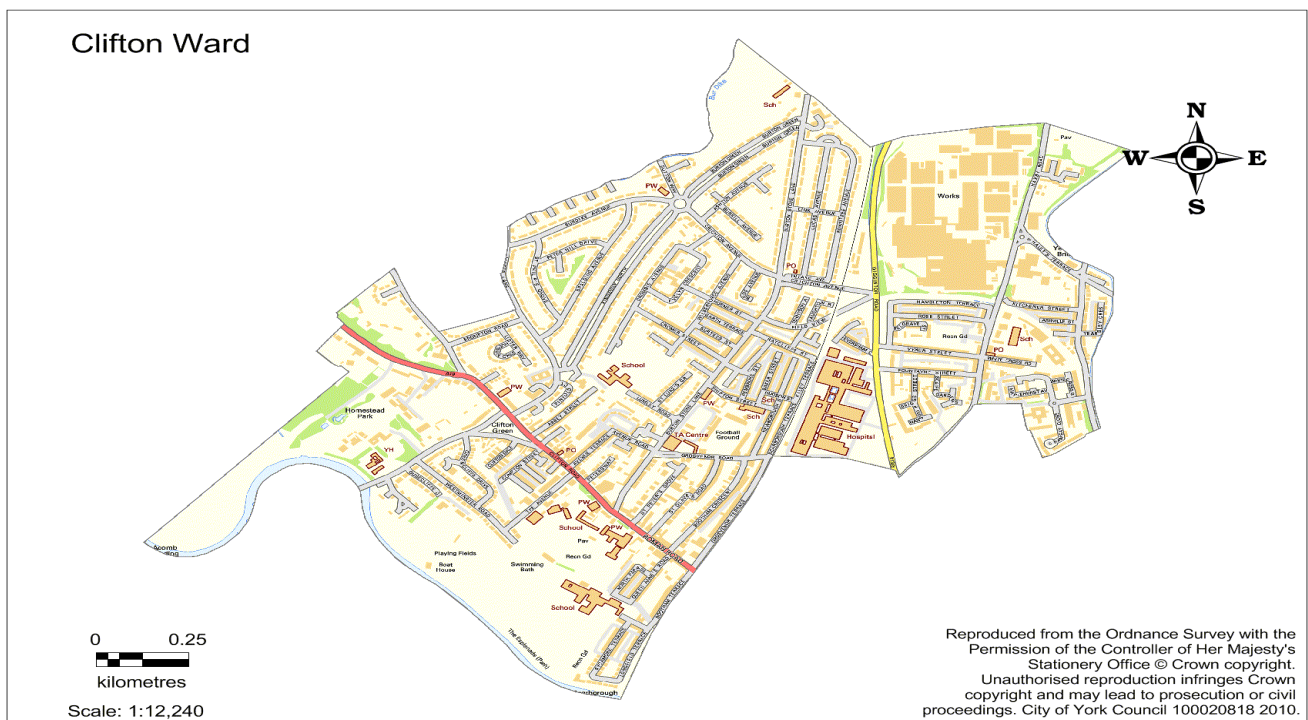




## York Summary

- York has 202,433 residents with 9.8% from a black and minority ethnic community group. 84% are in good health, with 15.3% stating they have some limitation in day to day activities.
- 66% of residents own their own home outright or via a mortgage, 18% are private renters and 14% social tenants.
- 73.5% of residents have a NVQ level 1-4 qualification with 18% having no qualification at all.
- 11.1% of children live in poverty and there are 9.1% of households in fuel poverty.
- 7.4% of the working population claim out of work benefits and 0.8% claim job seekers allowance.



## Ward Summary

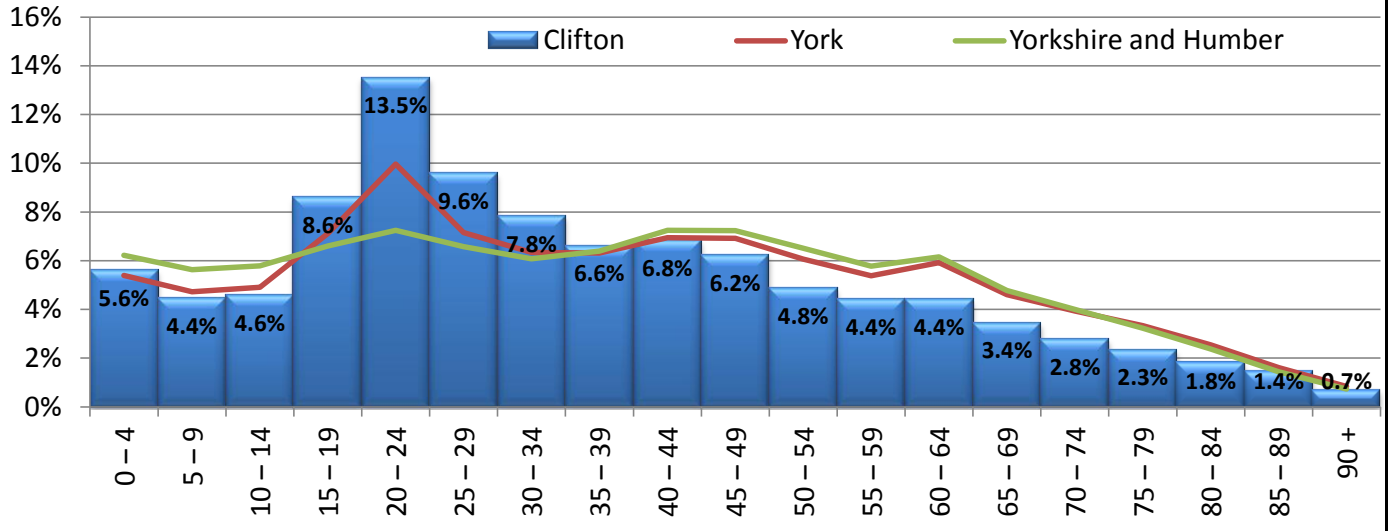
- Clifton has 13,548 residents with 14.3% from a black and minority ethnic community group. This compares to 12,017 residents and a BME proportion of 5.4% in 2001.
- 51% of residents own their own home outright or via a mortgage, 27% are private renters and 21% social tenants.
- 72.9% of residents have a NVQ level 1-4 qualification with 20% having no qualification at all.
- 20.5% children live in poverty and there are 12.9% of households in fuel poverty.
- 8.8% of the working population claim out of work benefits and 1.2% claim job seekers allowance.



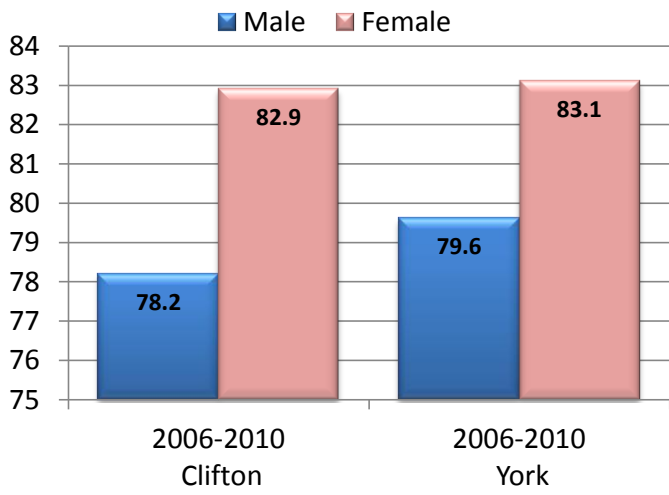
# Population

In 2011 the ward's population was 13,548, or 6.8% of York's total population. 36.7% were under the age of 25, and 12.5% were over 65. (Census 2011)

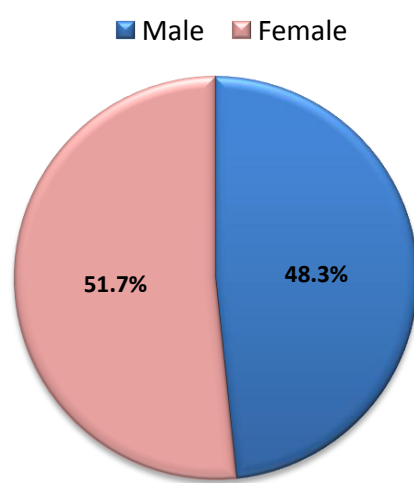
## % Population by age (Census 2011)



## Life Expectancy at birth (APHO)

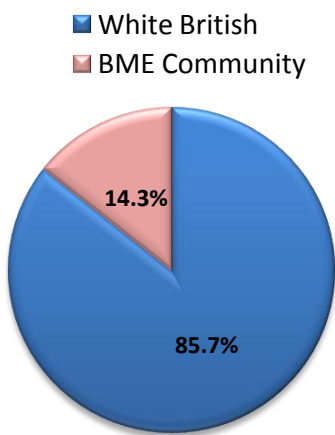


## Gender (Census 2011)

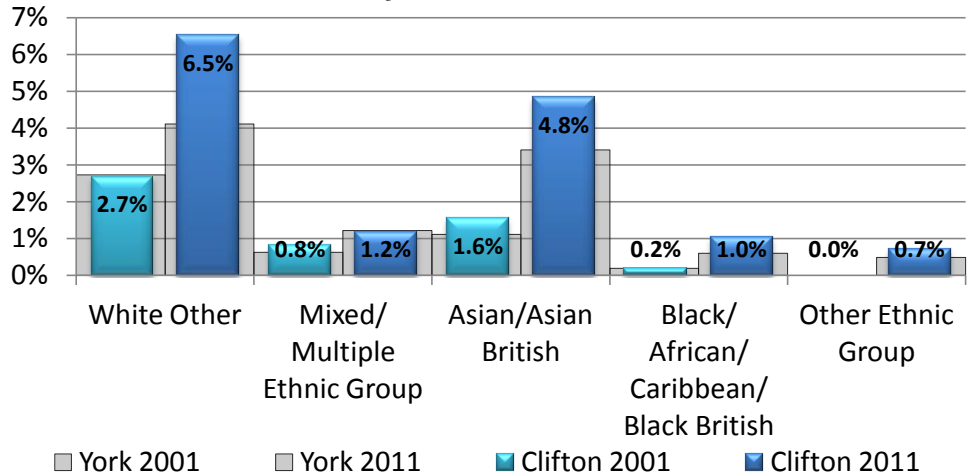


## Ethnicity (Census 2011)

### Ward Ethnicity



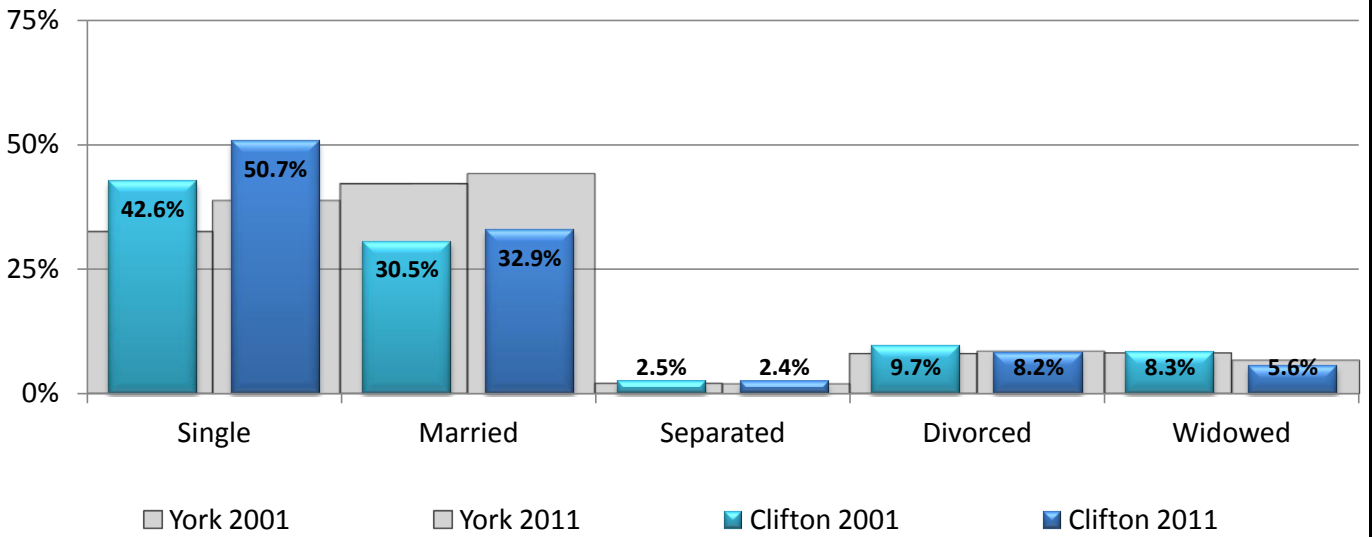
### BME Community (does not include white British)



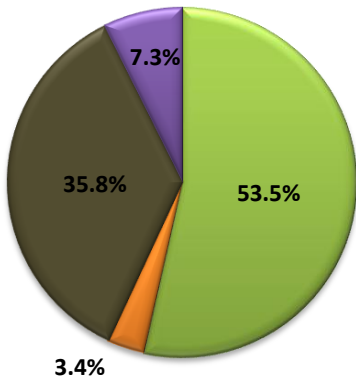


# Census 2011 Update

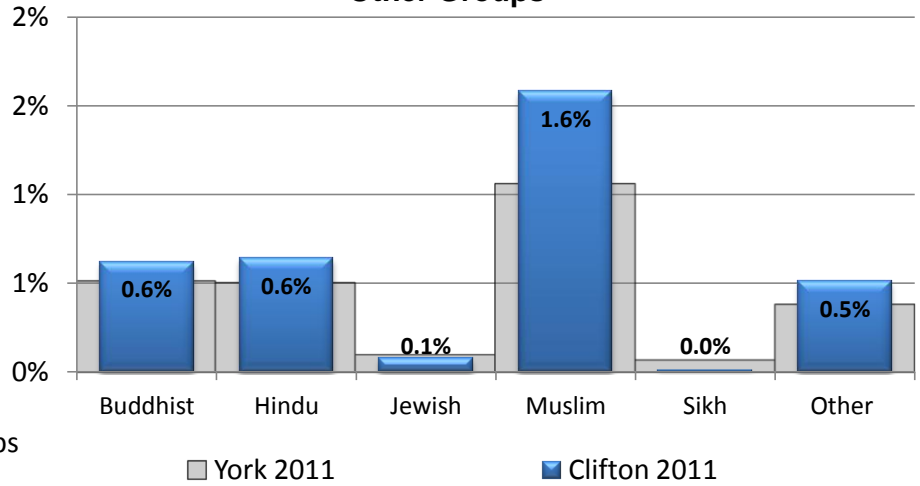
## Marital Status



## Religion

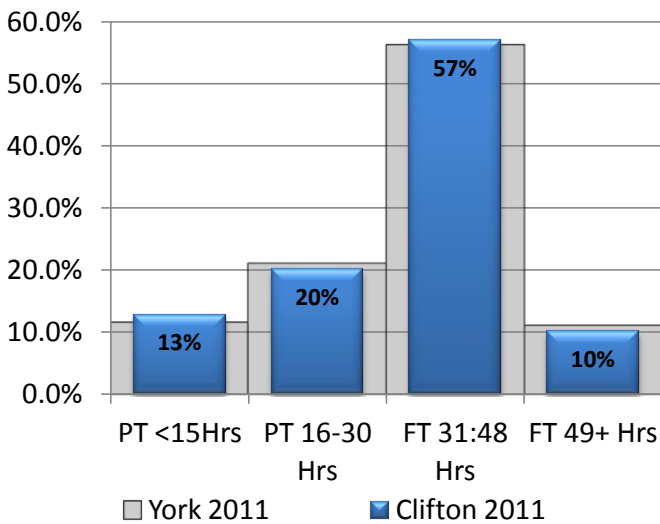


### Other Groups

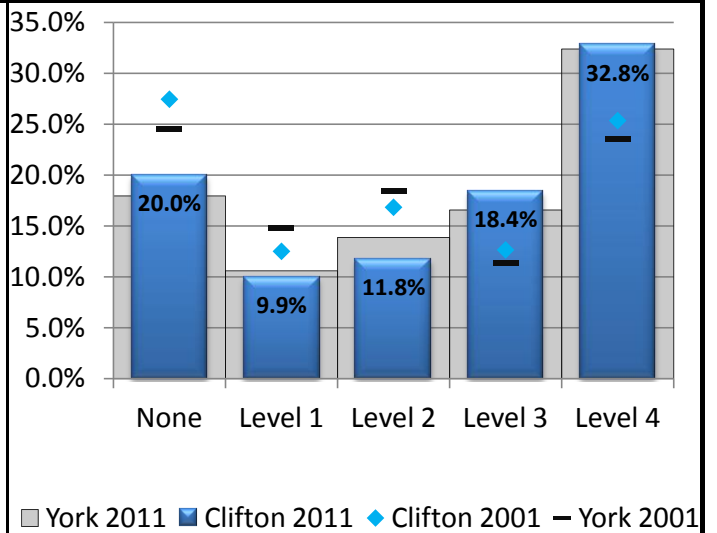


■ Christian  
■ Other Groups  
■ No religion  
■ Not stated

## Hours Worked



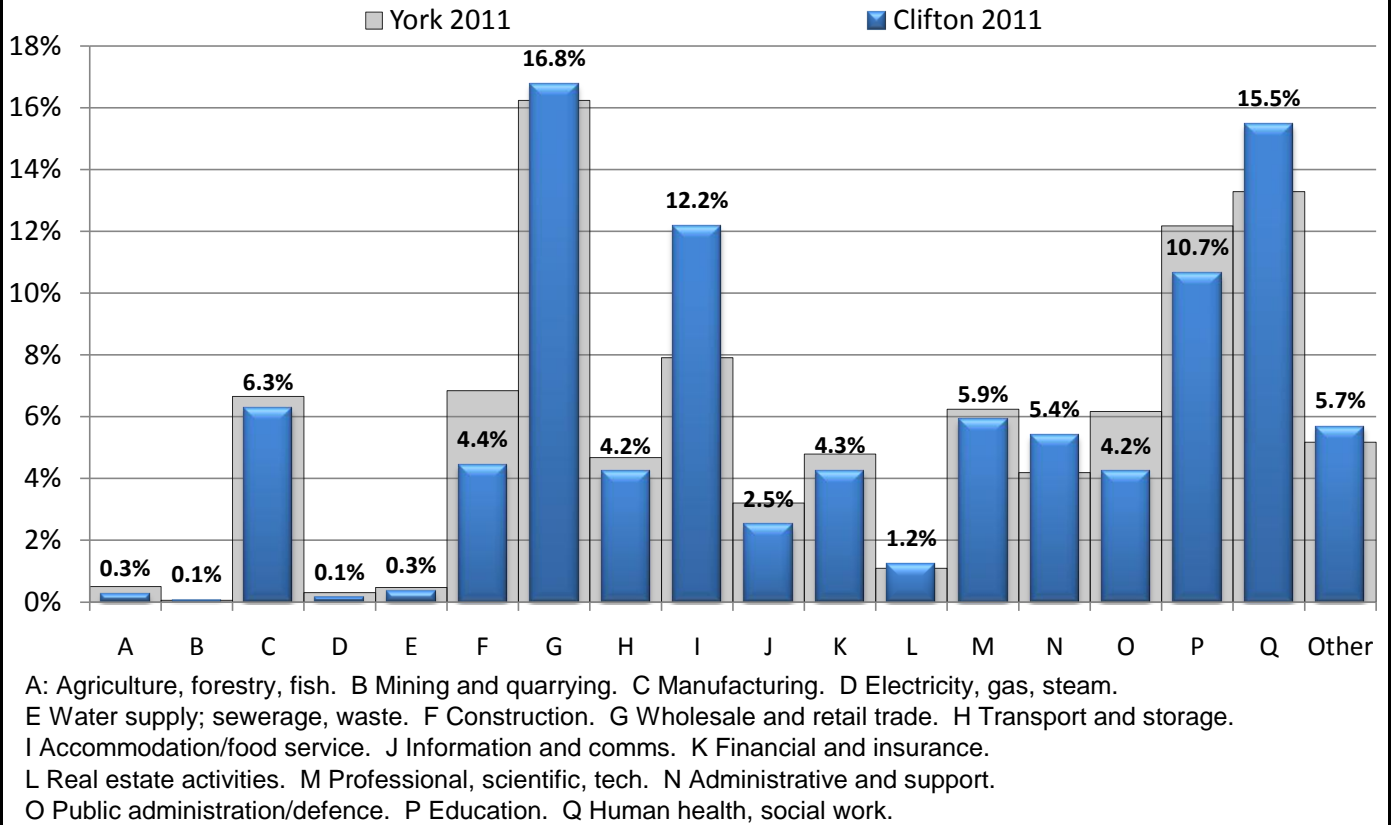
## Qualifications



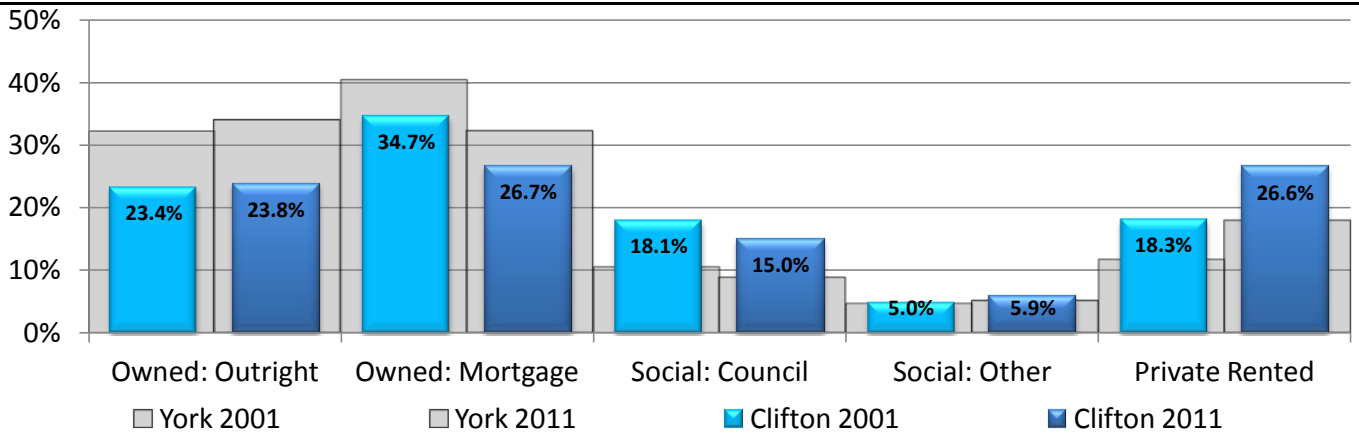


# Census 2011 Update

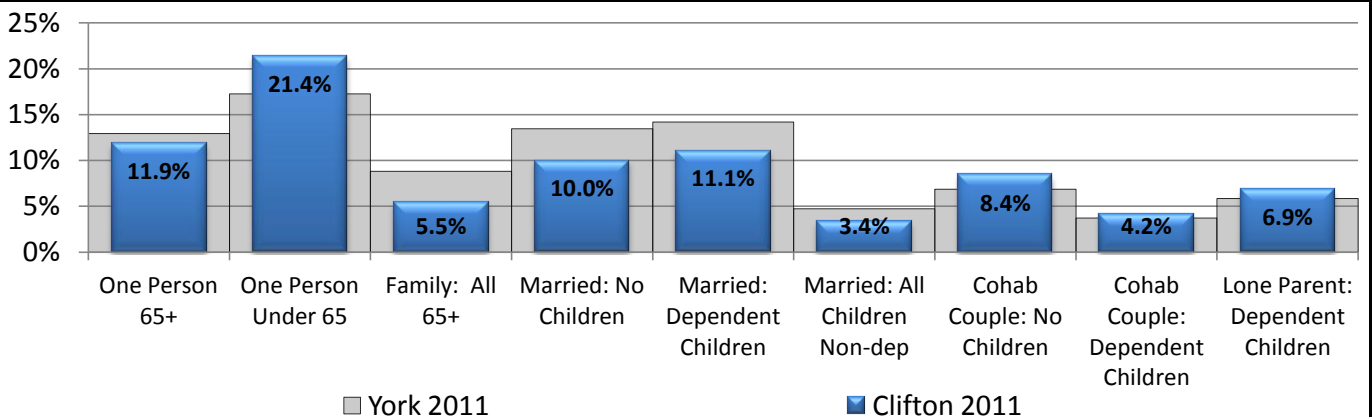
## Industry



## Tenure



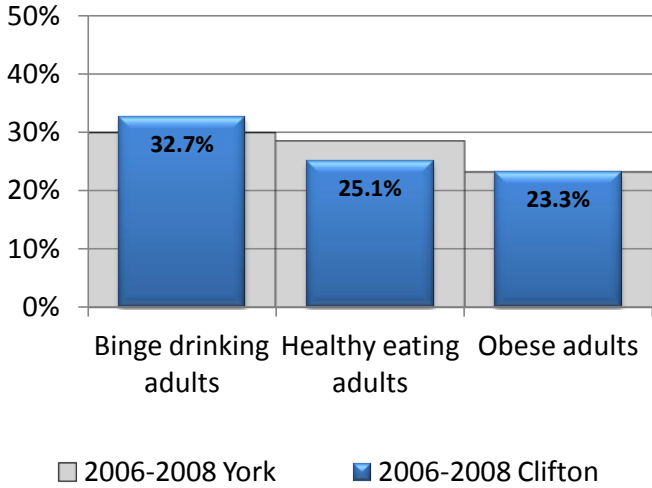
## Household Composition



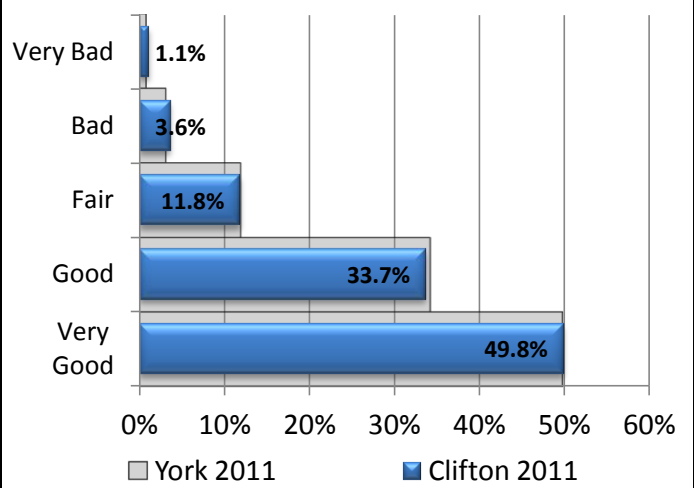


# Health and Wellbeing

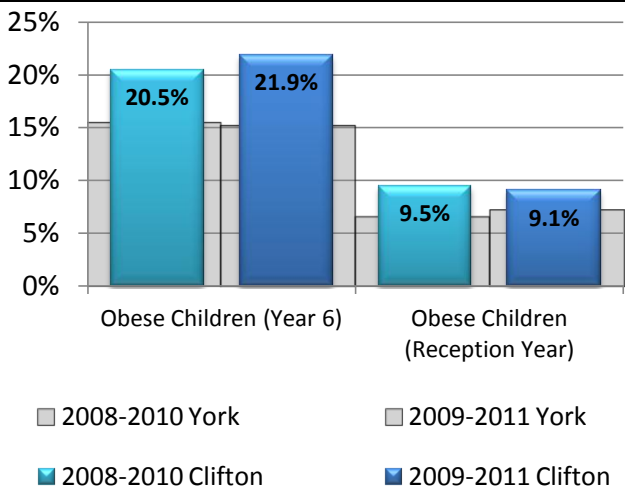
**% Healthy Adults (APHO)**



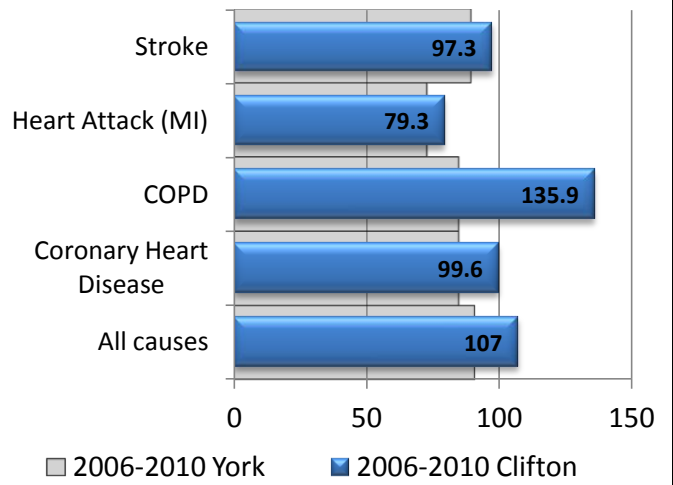
**General Health (Census 2011)**



**% Child Obesity (NHS)**

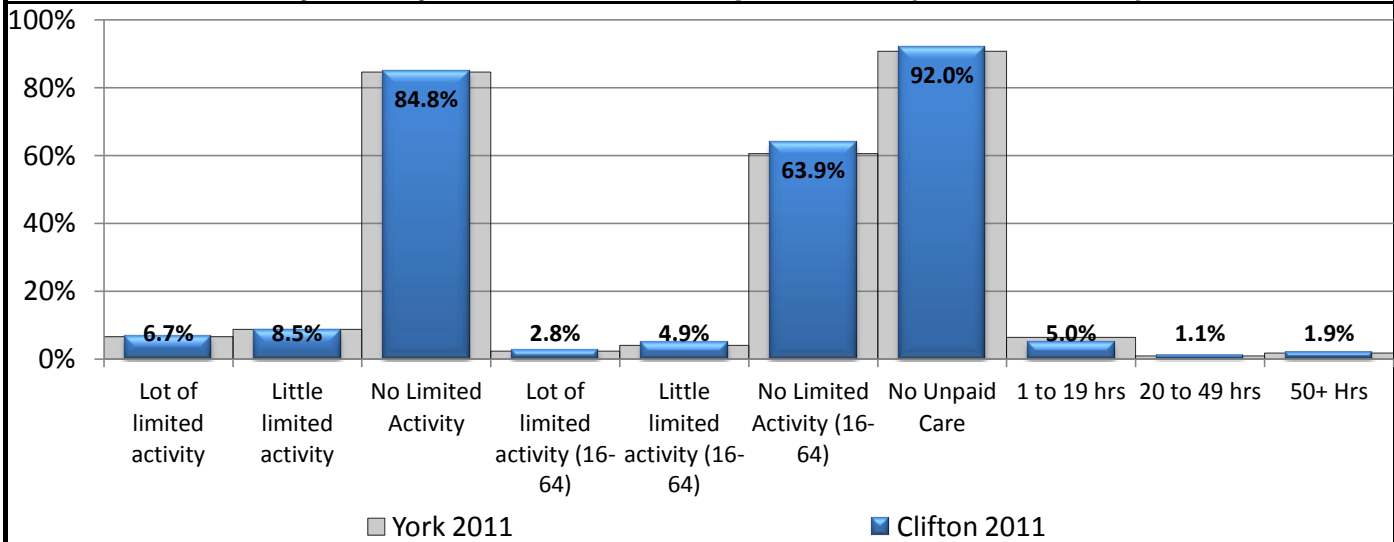


**SAR Emergency Hospital Admissions (NHS)**



\*SRR/SAR/SMR are standardised ratios which represent the decrease or increase in registration/admission/mortality for the cohort against the general population (100 is equal to general population).

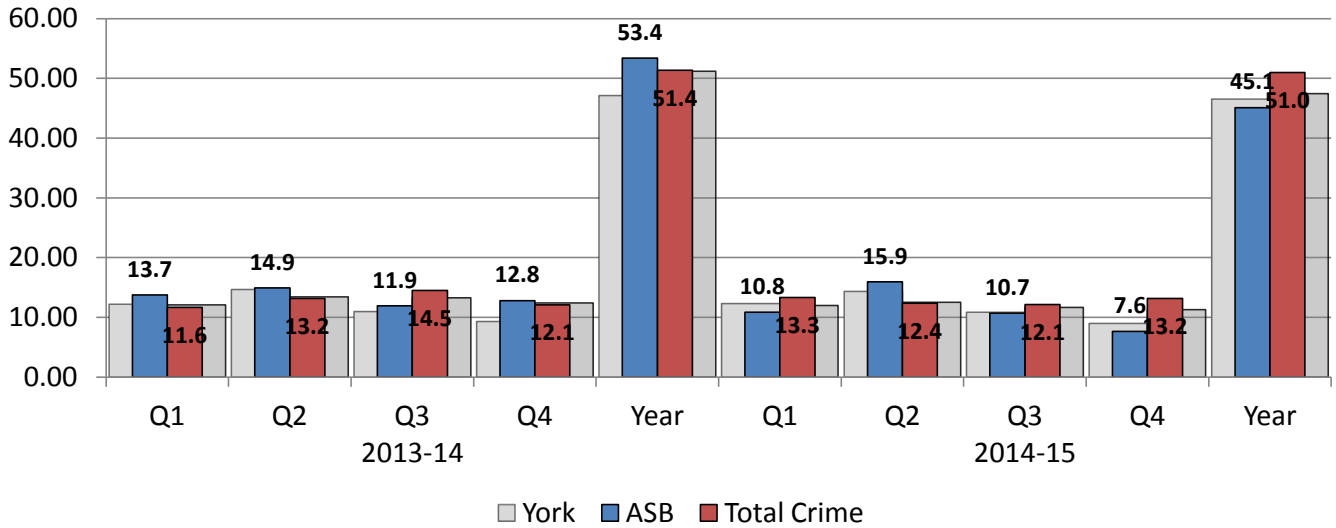
**Day to Day Activities and Unpaid Care (Census 2011)**



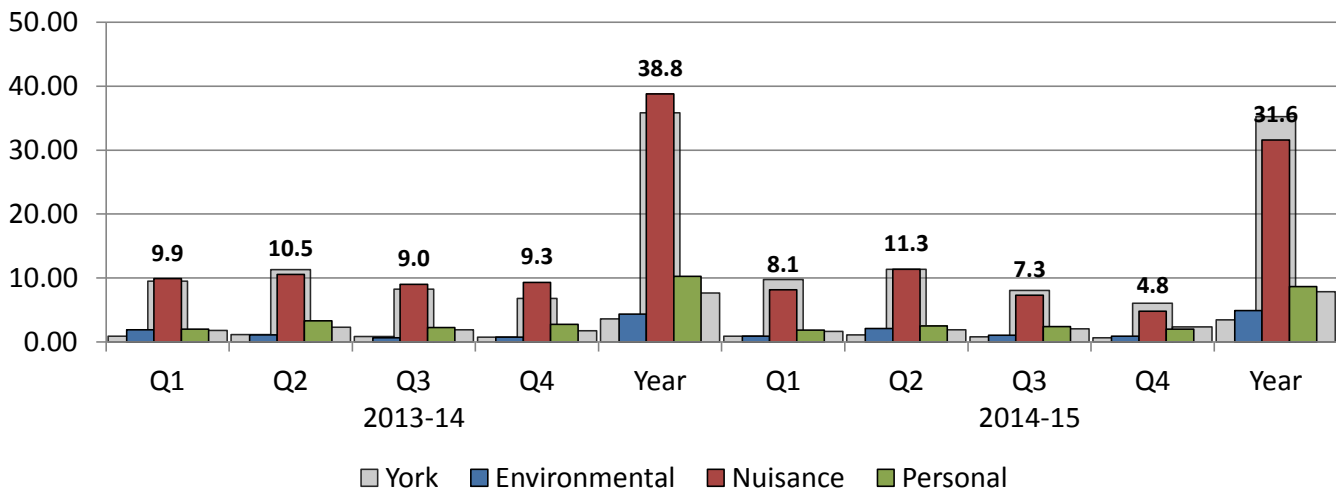


## Crime and Anti-Social Behaviour

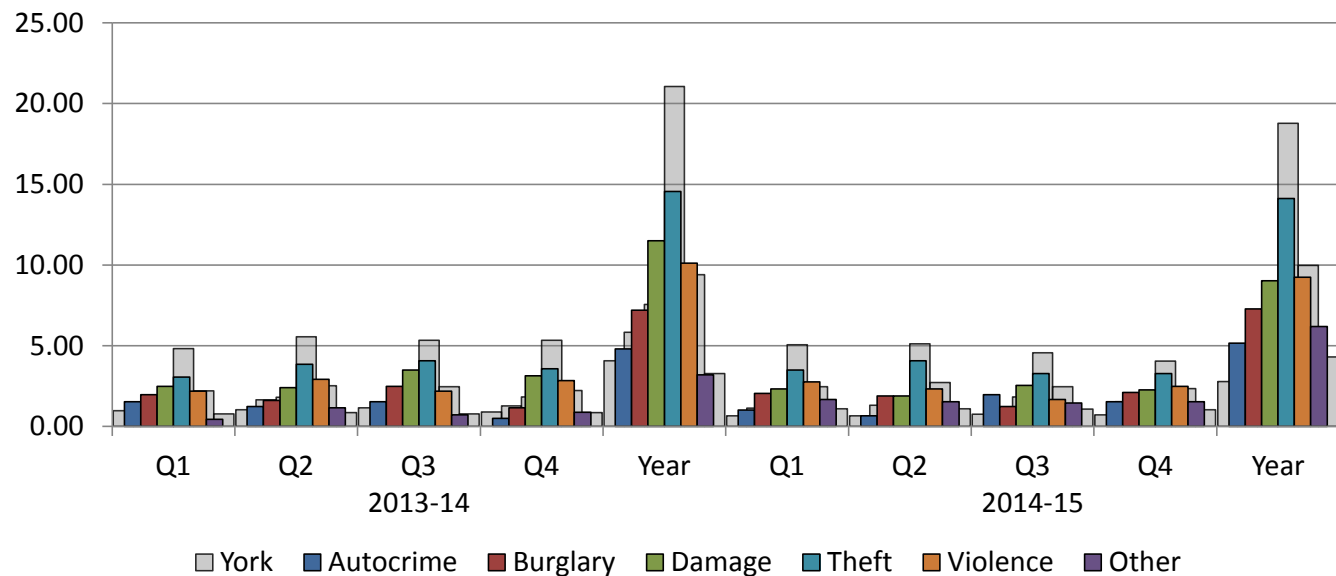
Total Crime and Total Anti-Social Behaviour per 1,000 population (NYP)



ASB per 1,000 population (NYP)



Crime Rate per 1,000 population (NYP)

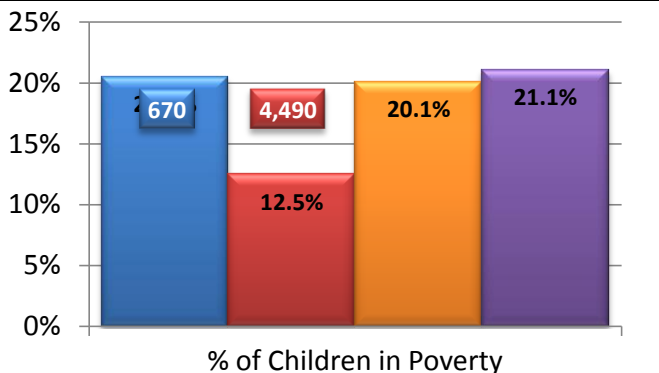




# Clifton

## Poverty

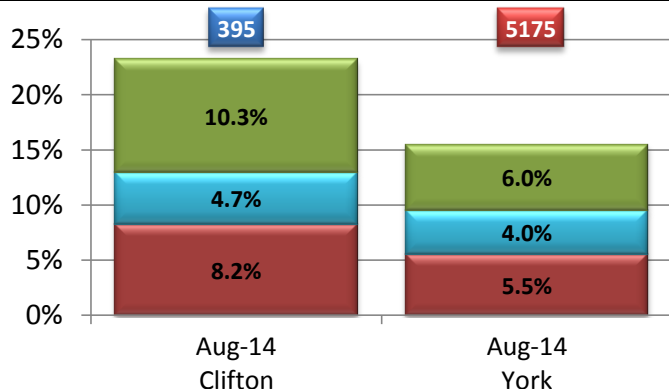
### Child Poverty 2011 (DWP)



■ Clifton ■ York ■ Yorkshire and Humber ■ England

\*Children in families receiving CTC only, and income <60% median income.

### Pension Credit - NOMIS (Proportion of 65+ Population)



■ Guarantee Element

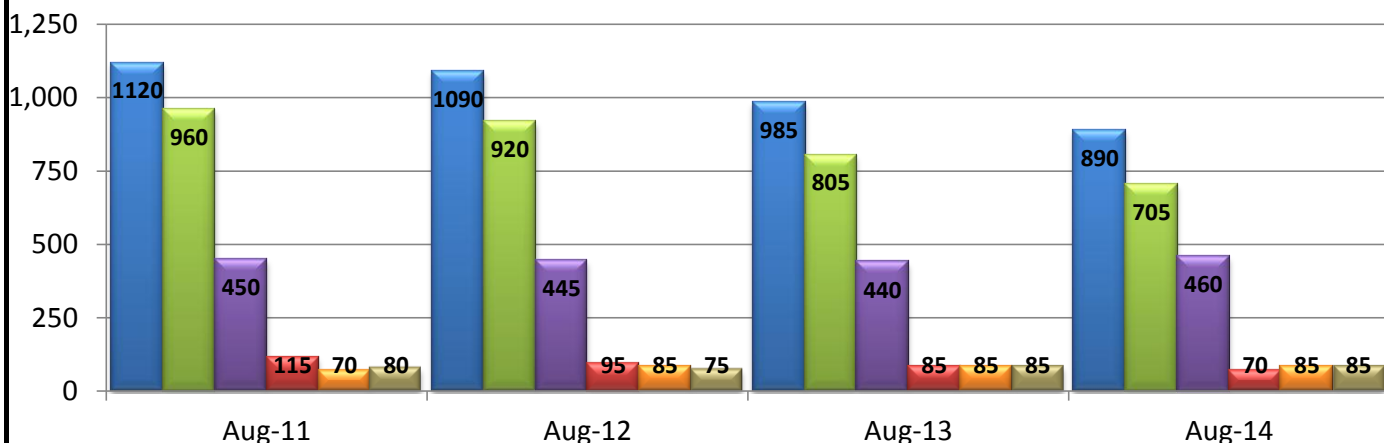
■ Saving Element

■ Guarantee & Saving

\*Pension credit is a benefit for older people that is based on your income. It has two parts - guarantee and saving credit.

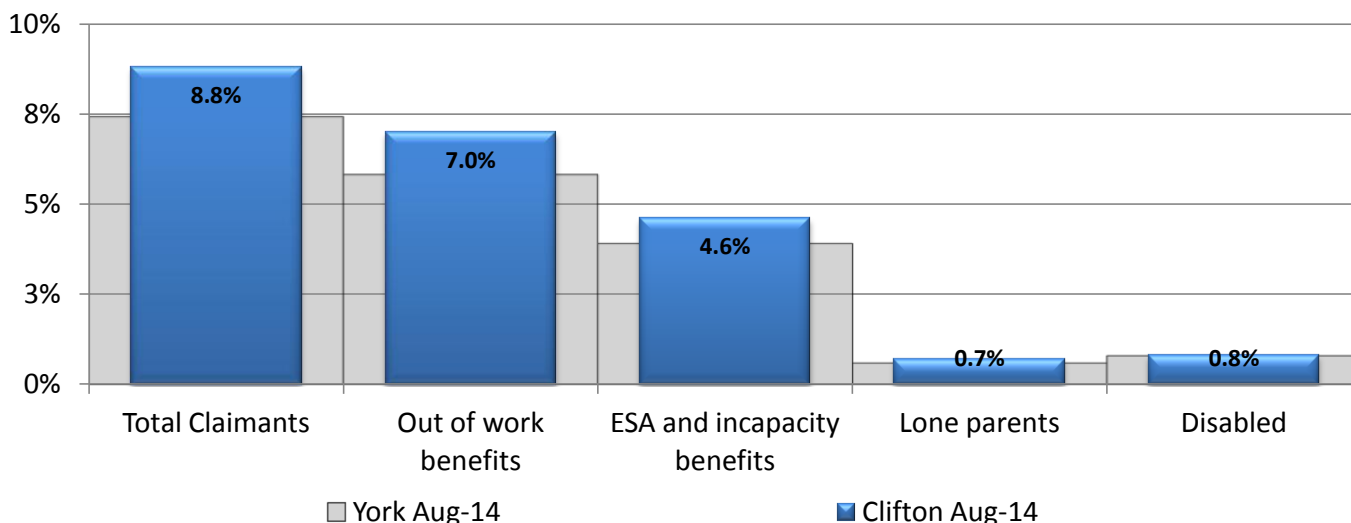
## Economy

### Benefits Claimants Numbers (NOMIS) By Ward



■ Total Claimants ■ Out of work benefits ■ ESA and incapacity benefits ■ Lone parents ■ Carers ■ Disabled

### Benefits Claimants Rate (16-64) Benchmark (NOMIS)



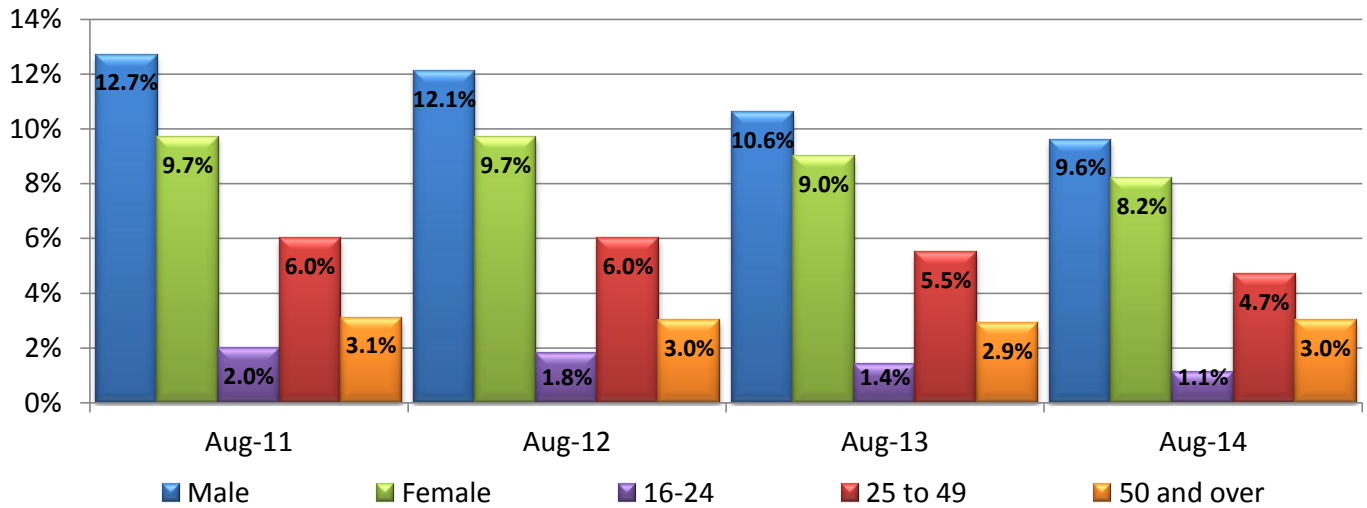
■ York Aug-14

■ Clifton Aug-14

# Clifton

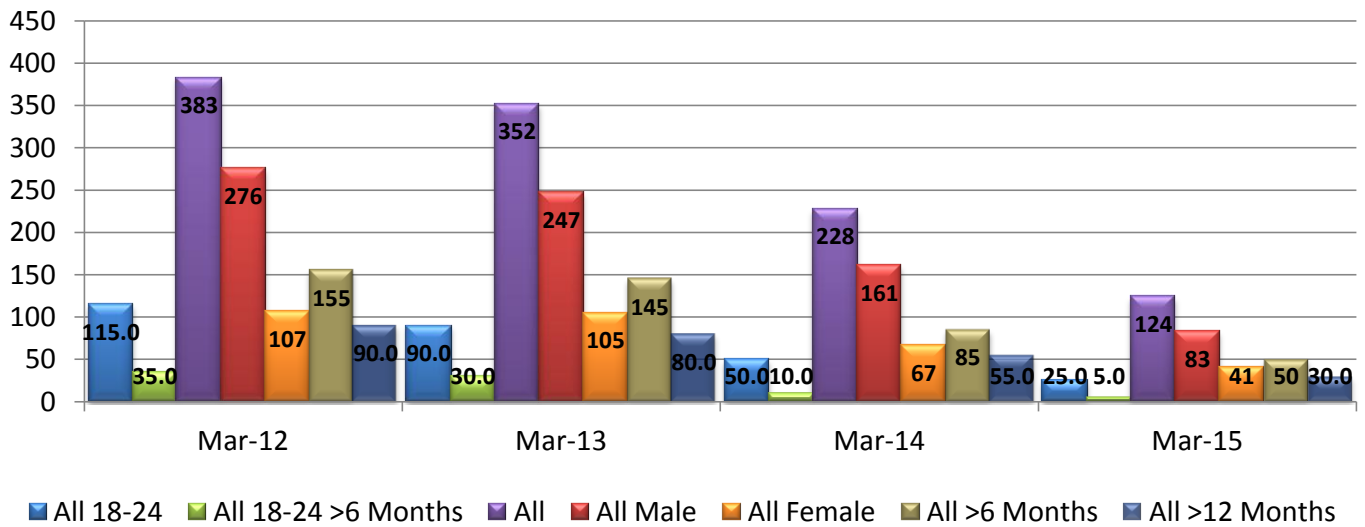


## Total Ward Claimant Rate (Age and Gender) Benchmark (NOMIS)

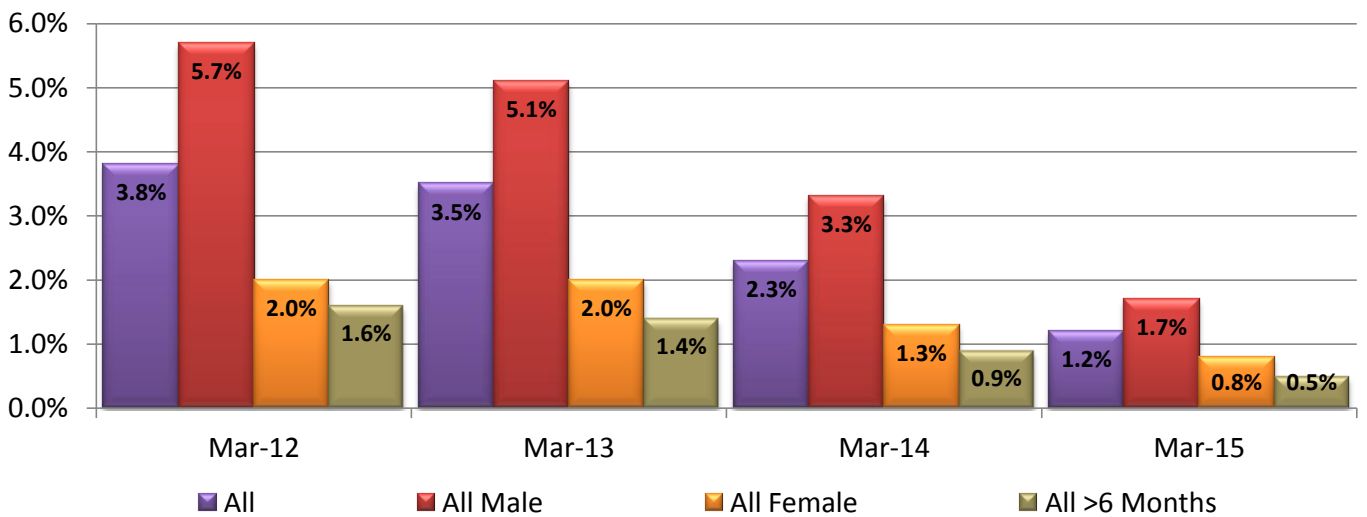


## Economy

### JSA Claimants Numbers (NOMIS) By Ward



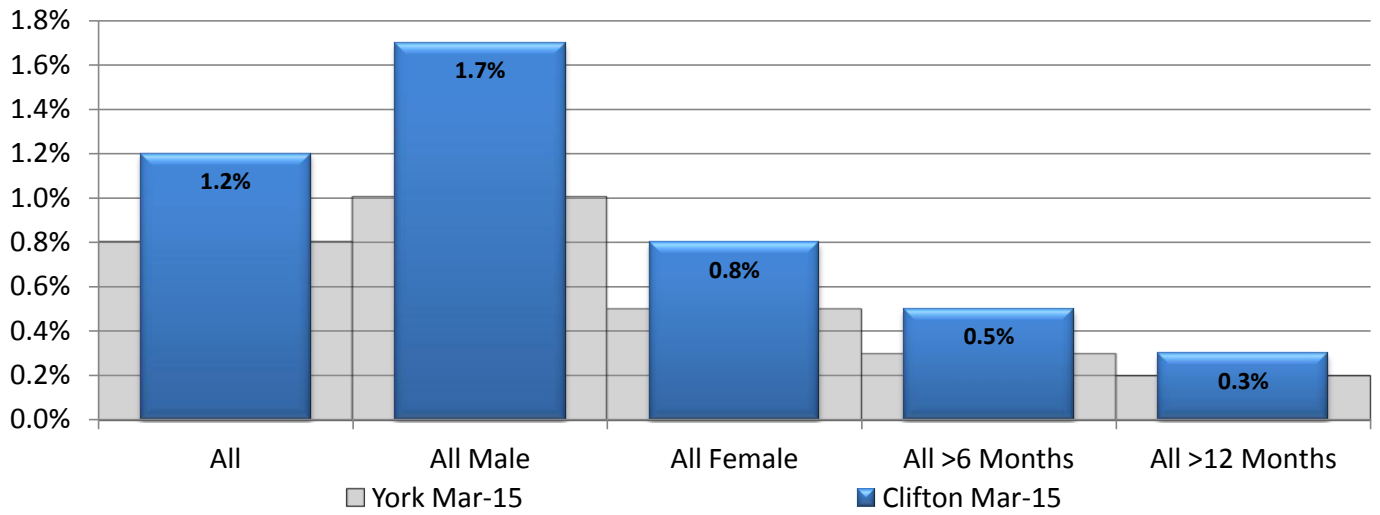
### JSA Claimants Rate (NOMIS 16-64) By Ward





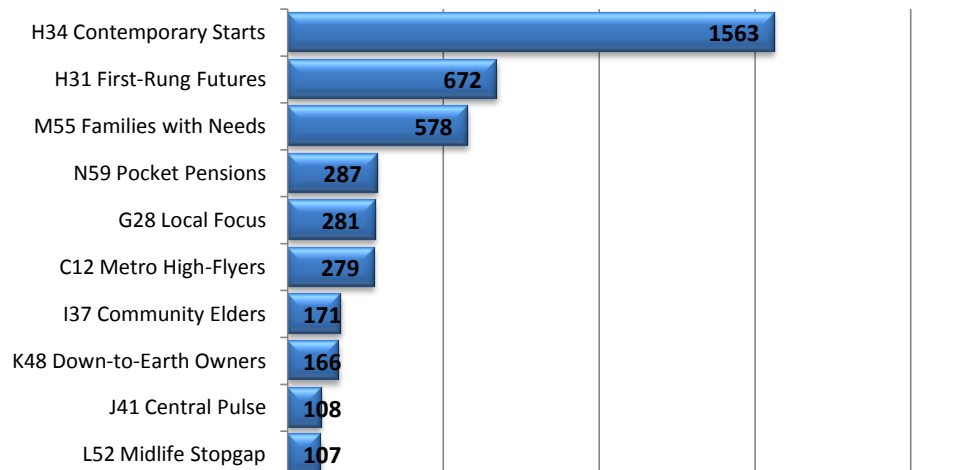
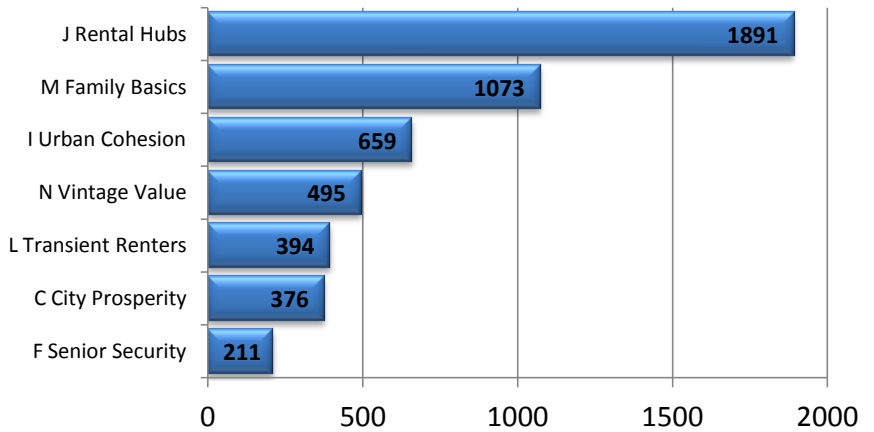


**JSA Claimants Rate Benchmark (NOMIS 16-64)**



**Household Types**

**Experian Groups (Experian 2014)**



Top 10 Types

This profile was created by the Business Intelligence Team.  
 Contact [business.intelligence@york.gov.uk](mailto:business.intelligence@york.gov.uk) for further information.



## Glossary

<b>Page 1</b>	BME – Black and Minority Ethnic community	
	NVQ – National Vocational Qualification	
<b>Page 2</b>	Census – 2011 survey carried out by the Office for National Statistics	<a href="http://www.ons.gov.uk/census">www.ons.gov.uk/census</a>
<b>Page 5</b>	APHO – Association of Public Health Observatories	<a href="http://www.apho.org.uk">http://www.apho.org.uk</a>
	COPD – Chronic obstructive pulmonary disease	
	SRR/SAR/SMR - Standardised ratios which represent the decrease or increase in registration/admission/mortality for the cohort against the general population (100 is equal to general population).	
<b>Page 6</b>	ASB – Anti-Social Behaviour	
	NYP – North Yorkshire Police	
<b>Page 7</b>	CTC – Child Tax Credit	
	DWP – Department for Work and Pensions	<a href="http://www.gov.uk/dwp">http://www.gov.uk/dwp</a>
	NOMIS – Official labour market statistics provided by the Office for National Statistics	<a href="http://www.nomisweb.co.uk/">http://www.nomisweb.co.uk/</a>
	ESA – Employment and Support Allowance	
<b>Page 8</b>	JSA – Job Seekers Allowance	
<b>Page 9</b>	Experian – Classification system used to provide a detailed understanding of citizen's location, demographics, lifestyle and behaviour	