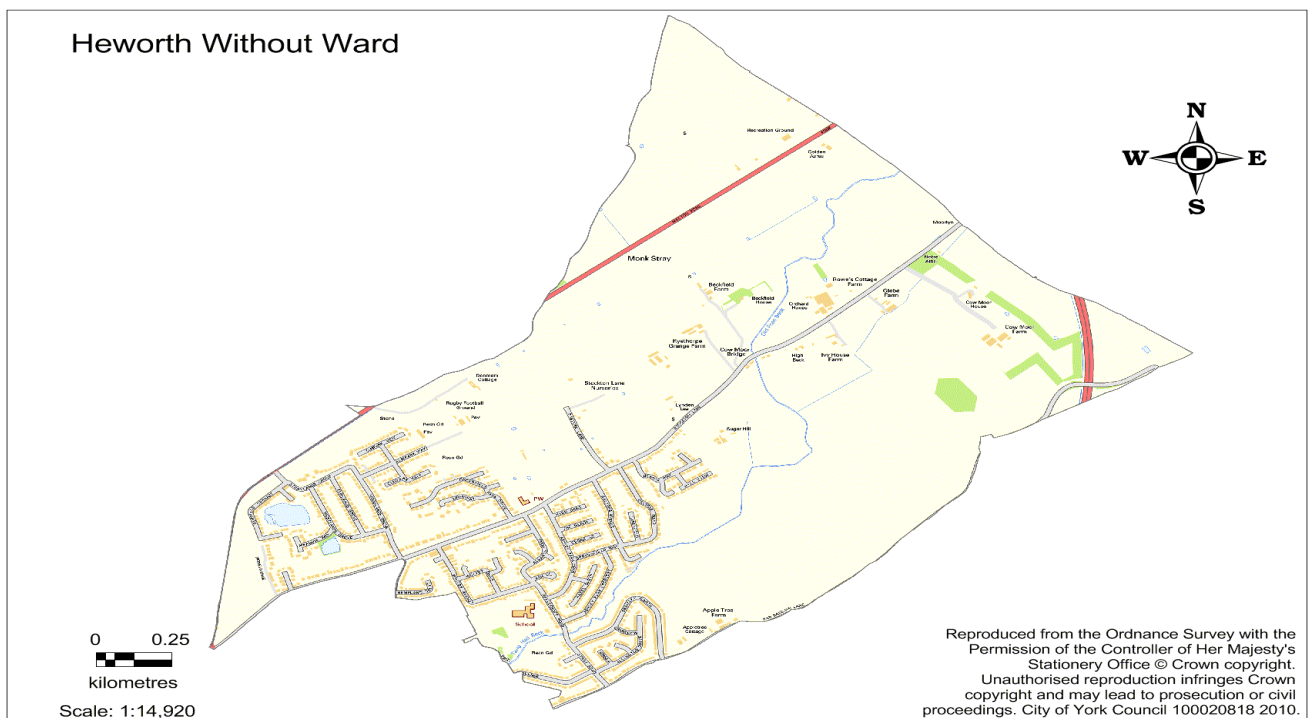




## York Summary

- York has 202,433 residents with 9.8% from a black and minority ethnic community group. 84% are in good health, with 15.3% stating they have some limitation in day to day activities.
- 66% of residents own their own home outright or via a mortgage, 18% are private renters and 14% social tenants.
- 73.5% of residents have a NVQ level 1-4 qualification with 18% having no qualification at all.
- 11.1% of children live in poverty and there are 9.1% of households in fuel poverty.
- 7.4% of the working population claim out of work benefits and 0.8% claim job seekers allowance.



## Ward Summary

- Heworth Without has 3,668 residents with 4.1% from a black and minority ethnic community group. This compares to 3,786 residents and a BME proportion of 3.1% in 2001.
- 92% of residents own their own home outright or via a mortgage, 6% are private renters and 1% social tenants.
- 68.1% of residents have a NVQ level 1-4 qualification with 20.4% having no qualification at all.
- 2.5% children live in poverty and there are 6.5% of households in fuel poverty.
- 4.1% of the working population claim out of work benefits and 0.4% claim job seekers allowance.

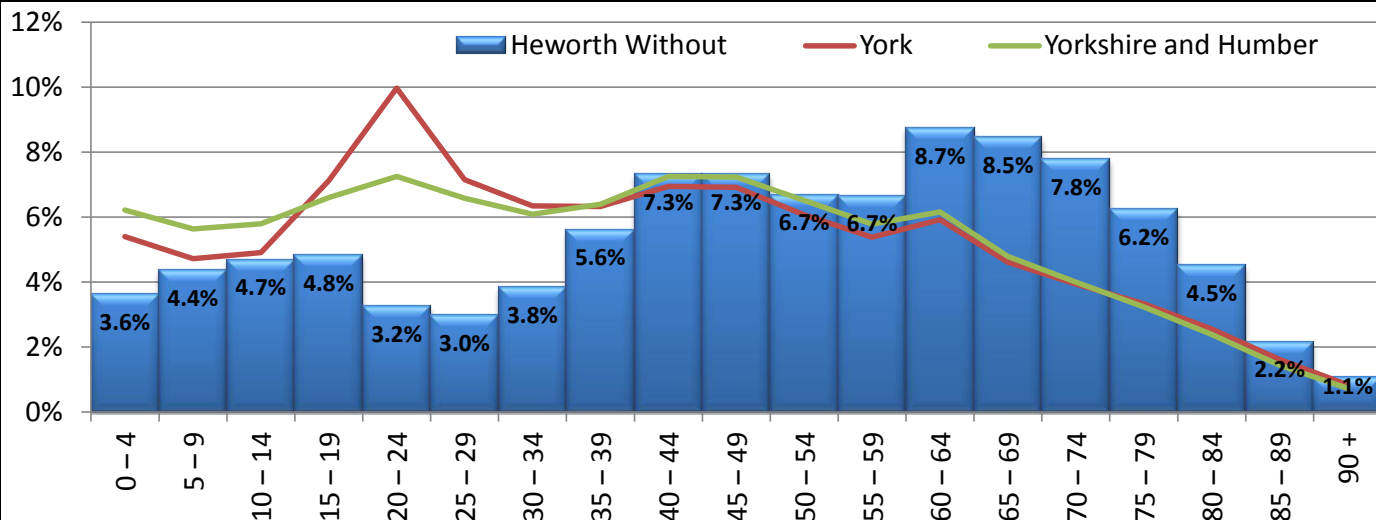


# Heworth Without

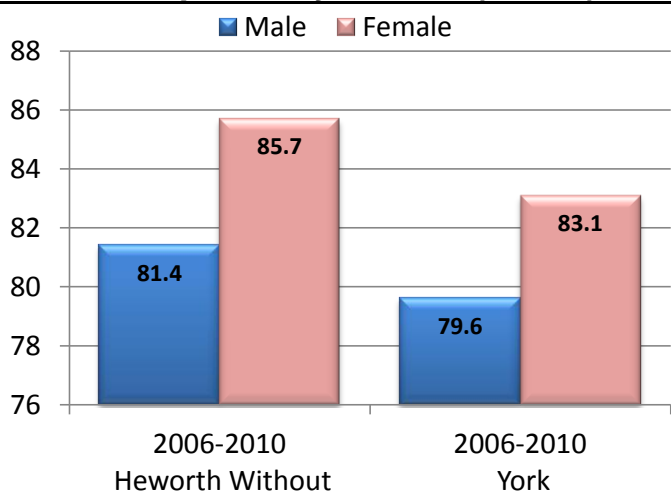
## Population

In 2011 the ward's population was 3,668, or 1.9% of York's total population. 20.7% were under the age of 25, and 30.2% were over 65. (Census 2011)

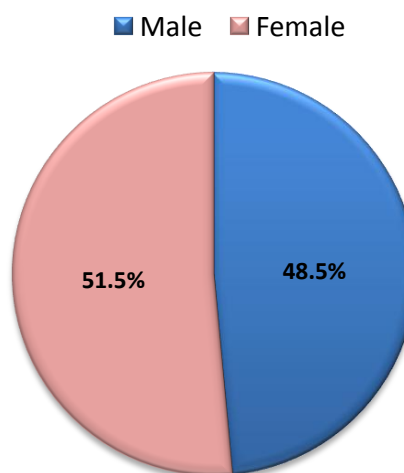
### % Population by age (Census 2011)



### Life Expectancy at birth (APHO)

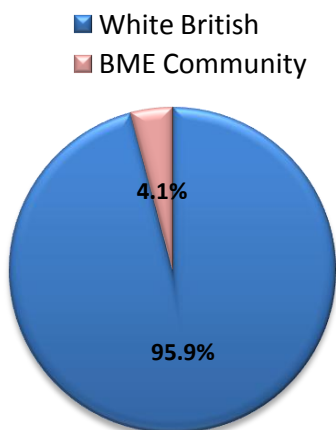


### Gender (Census 2011)

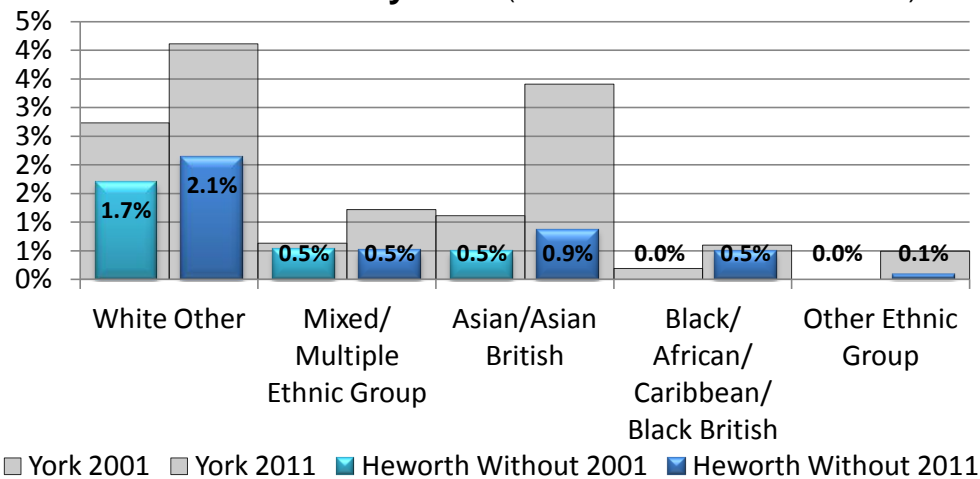


### Ethnicity (Census 2011)

#### Ward Ethnicity



#### BME Community (does not include white British)

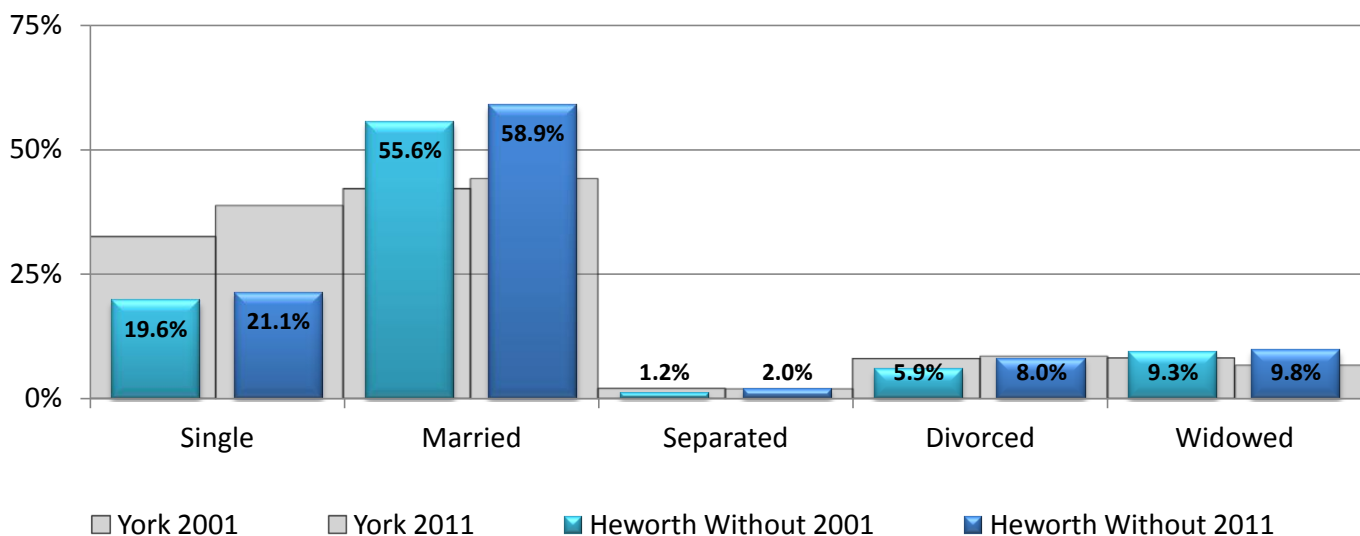




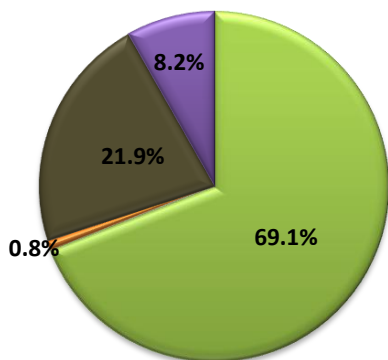
# Heworth Without

## Census 2011 Update

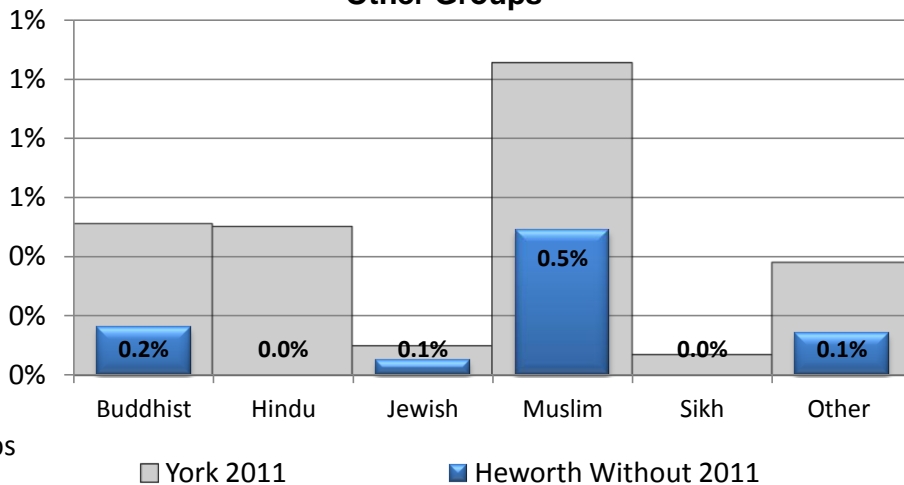
### Marital Status



### Religion

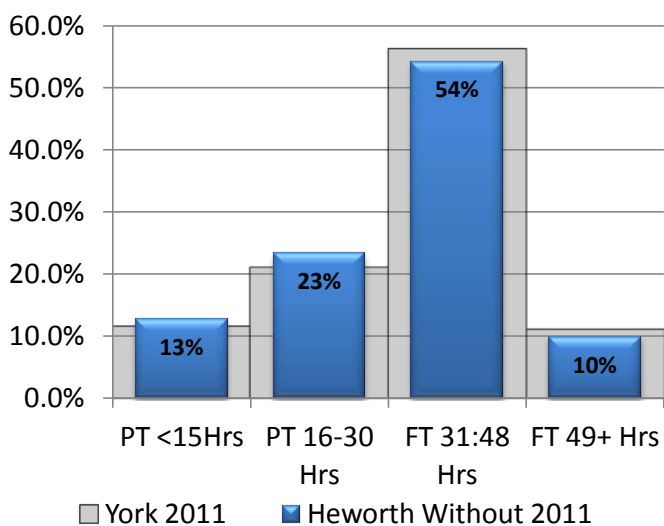


#### Other Groups

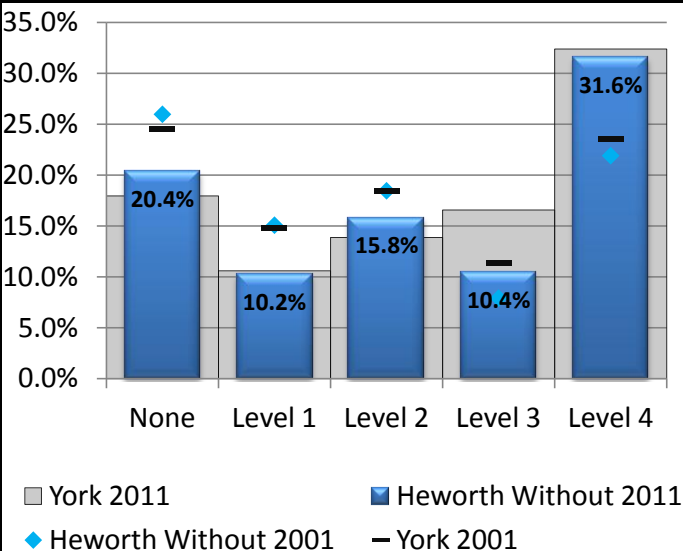


- Christian
- No religion
- Other Groups
- Not stated

### Hours Worked



### Qualifications

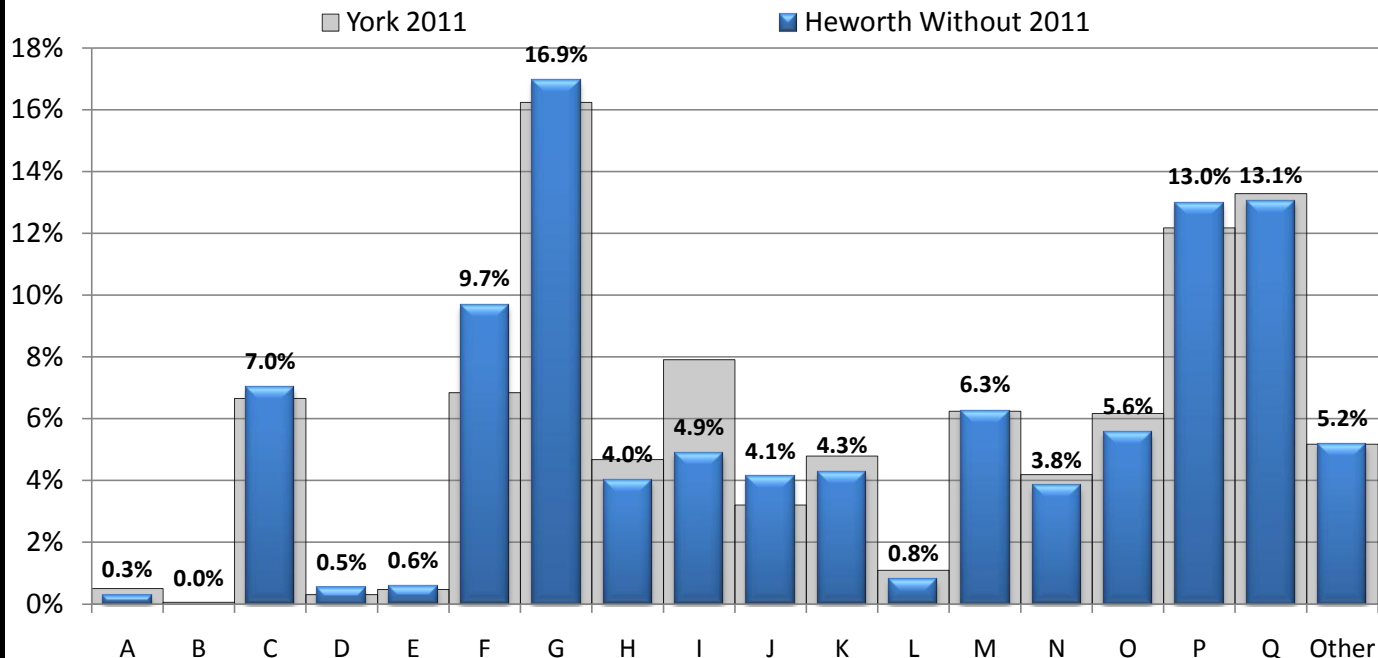




# Heworth Without

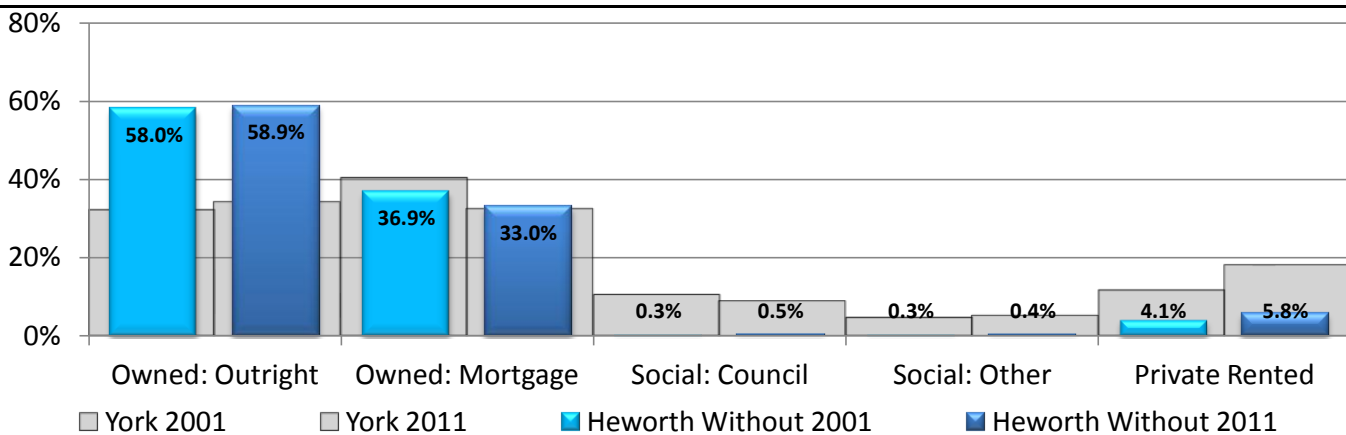
## Census 2011 Update

### Industry

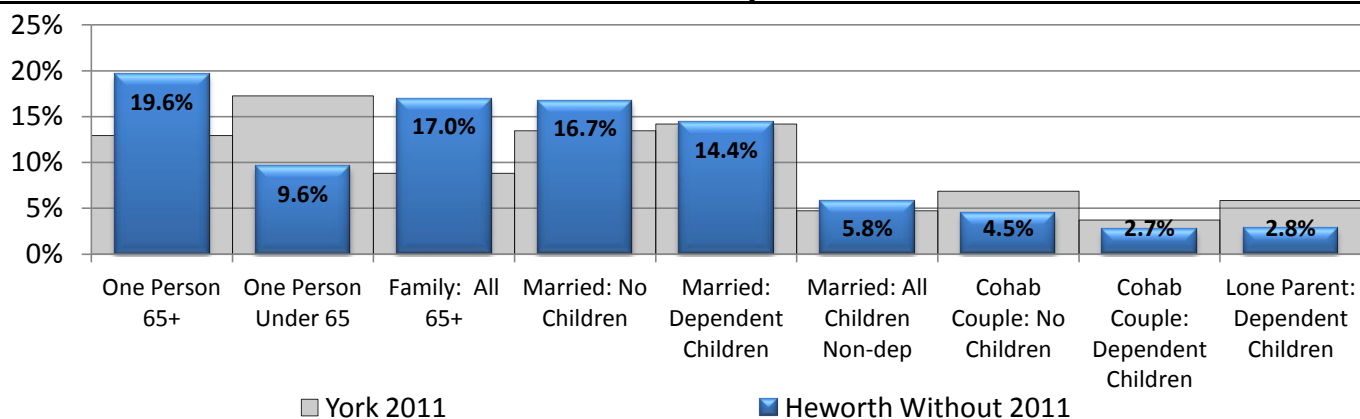


A: Agriculture, forestry, fish. B Mining and quarrying. C Manufacturing. D Electricity, gas, steam. E Water supply; sewerage, waste. F Construction. G Wholesale and retail trade. H Transport and storage. I Accommodation/food service. J Information and comms. K Financial and insurance. L Real estate activities. M Professional, scientific, tech. N Administrative and support. O Public administration/defence. P Education. Q Human health, social work.

### Tenure



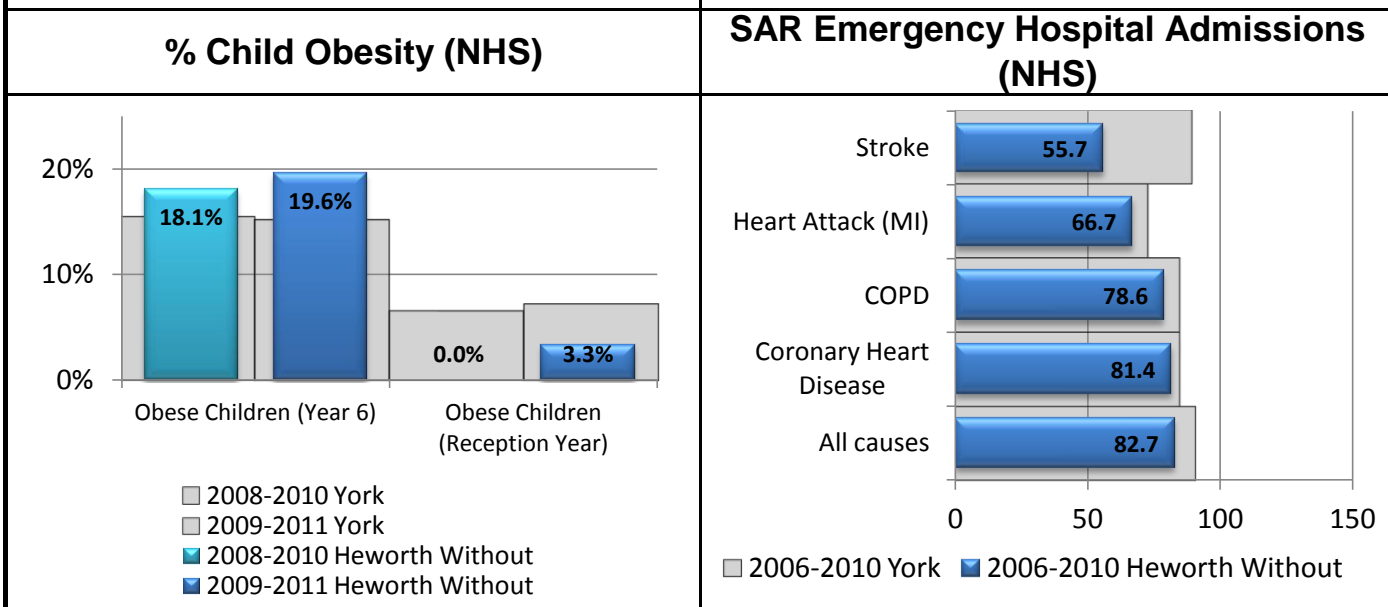
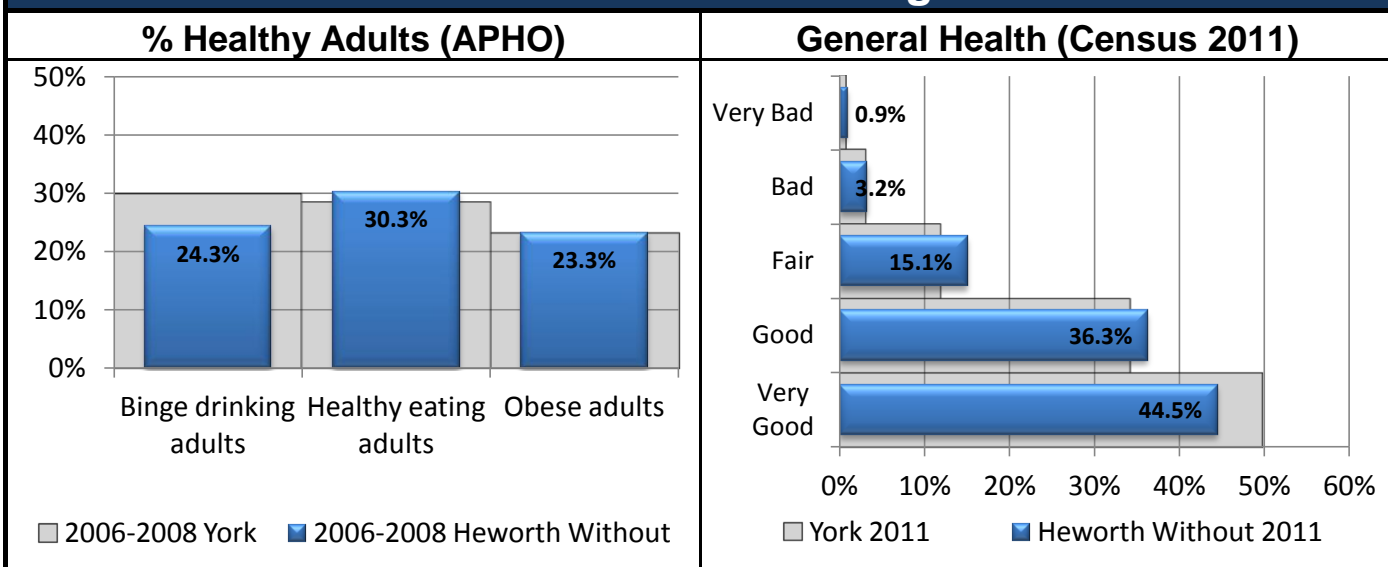
### Household Composition





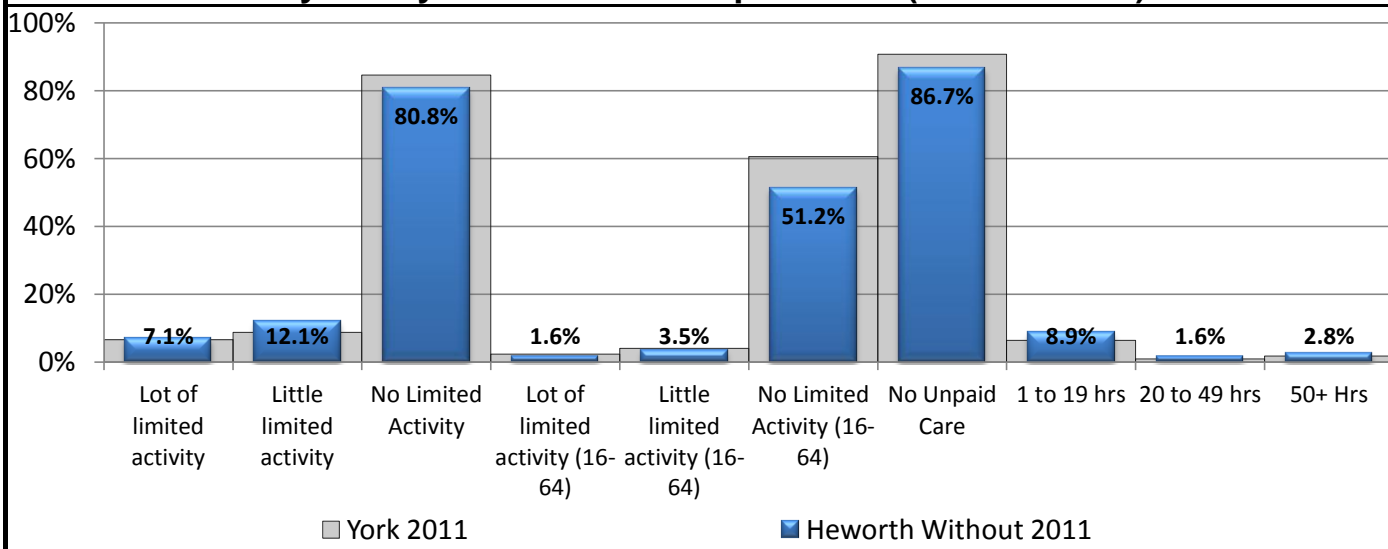
# Heworth Without

## Health and Wellbeing



\*SRR/SAR/SMR are standardised ratios which represent the decrease or increase in registration/admission/mortality for the cohort against the general population (100 is equal to general population).

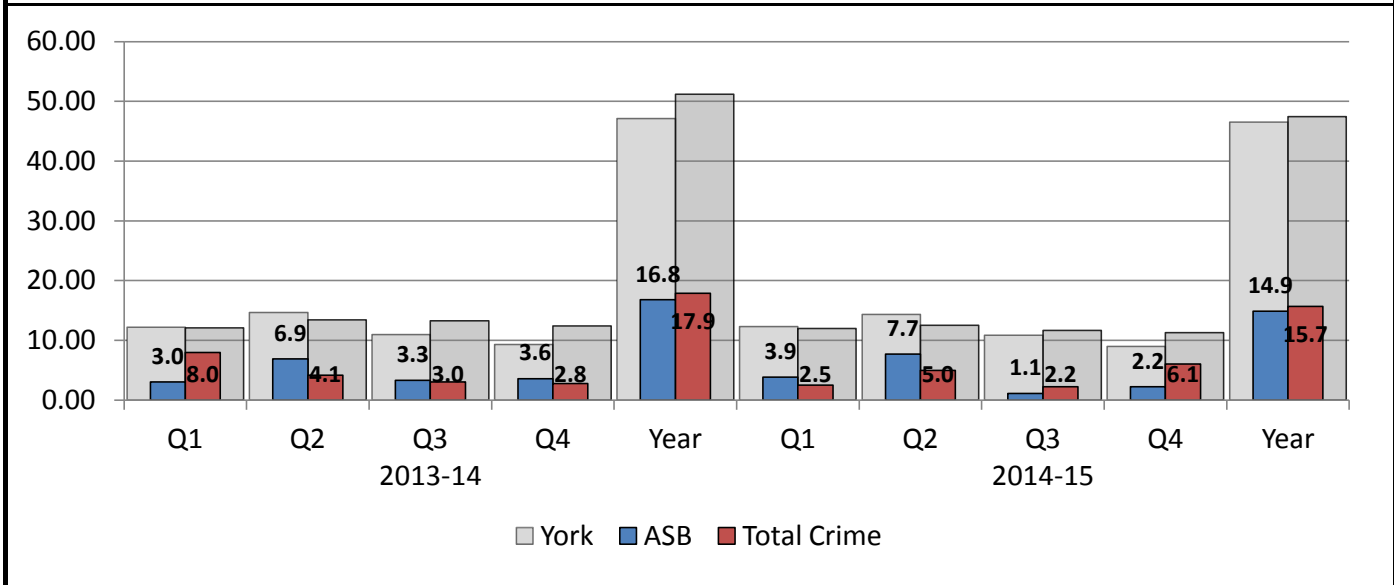
## Day to Day Activities and Unpaid Care (Census 2011)



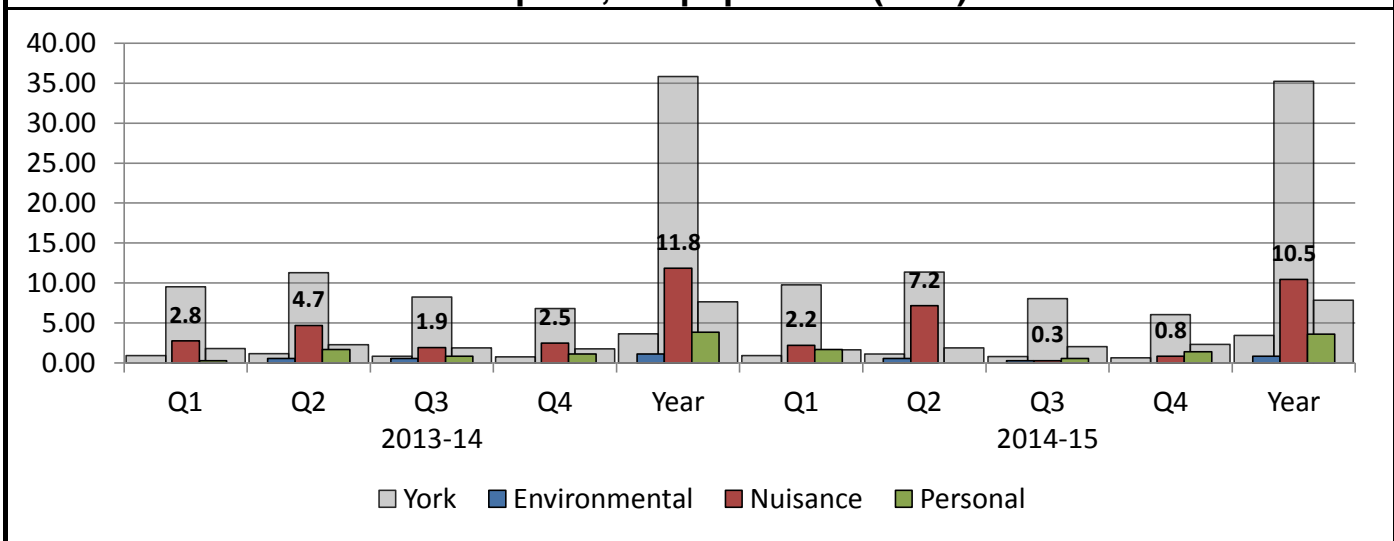


## Crime and Anti-Social Behaviour

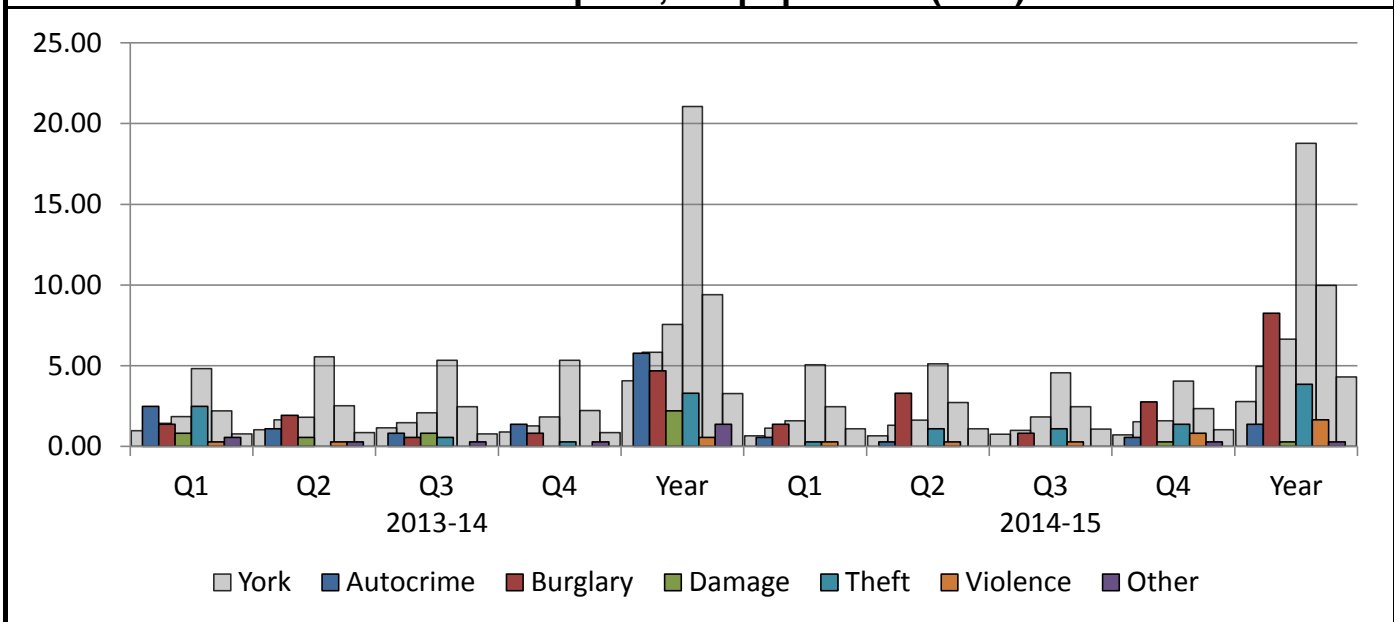
### Total Crime and Total Anti-Social Behaviour per 1,000 population (NYP)



### ASB per 1,000 population (NYP)



### Crime Rate per 1,000 population (NYP)

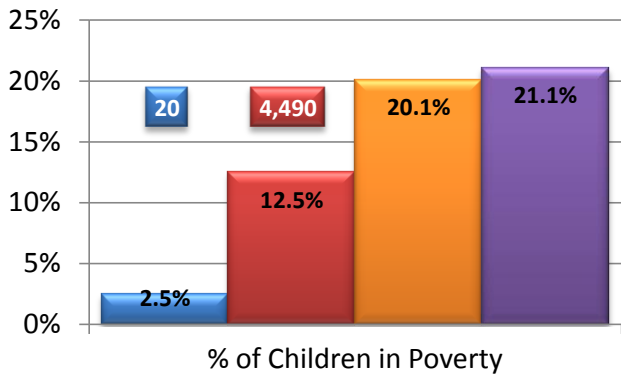


# Heworth Without



## Poverty

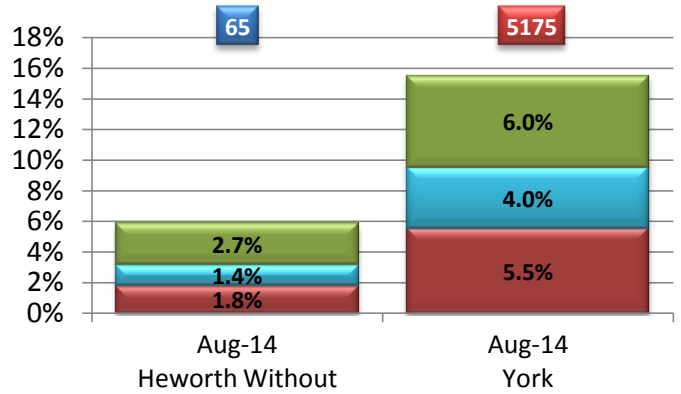
### Child Poverty 2011 (DWP)



■ Heworth Without      ■ York  
■ Yorkshire and Humber      ■ England

\*Children in families receiving CTC only, and income <60% median income.

### Pension Credit - NOMIS (Proportion of 65+ Population)

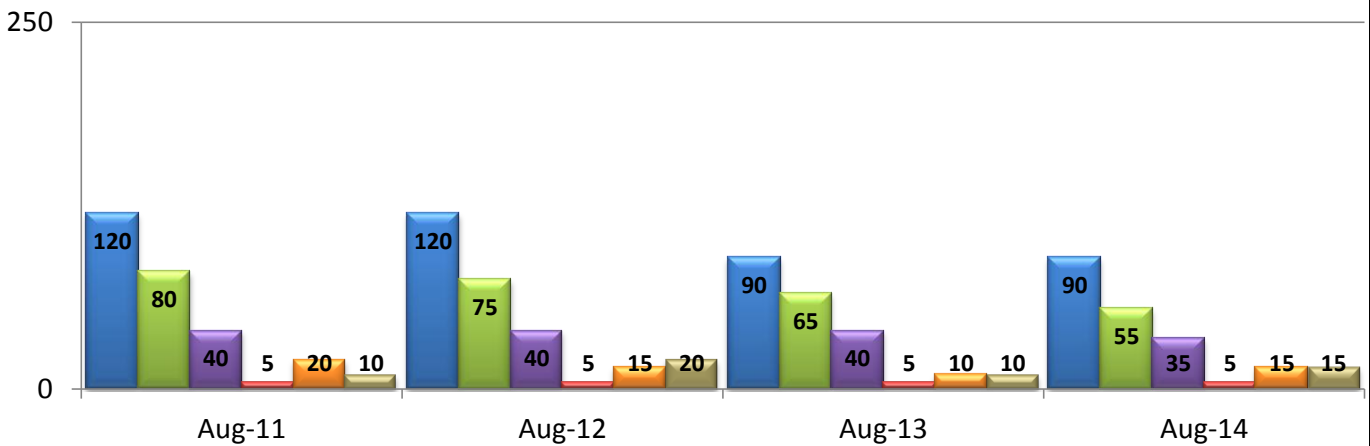


\*Pension credit is a benefit for older people that is based on your income. It has two parts - guarantee and saving credit.

■ Guarantee Element  
■ Saving Element  
■ Guarantee & Saving

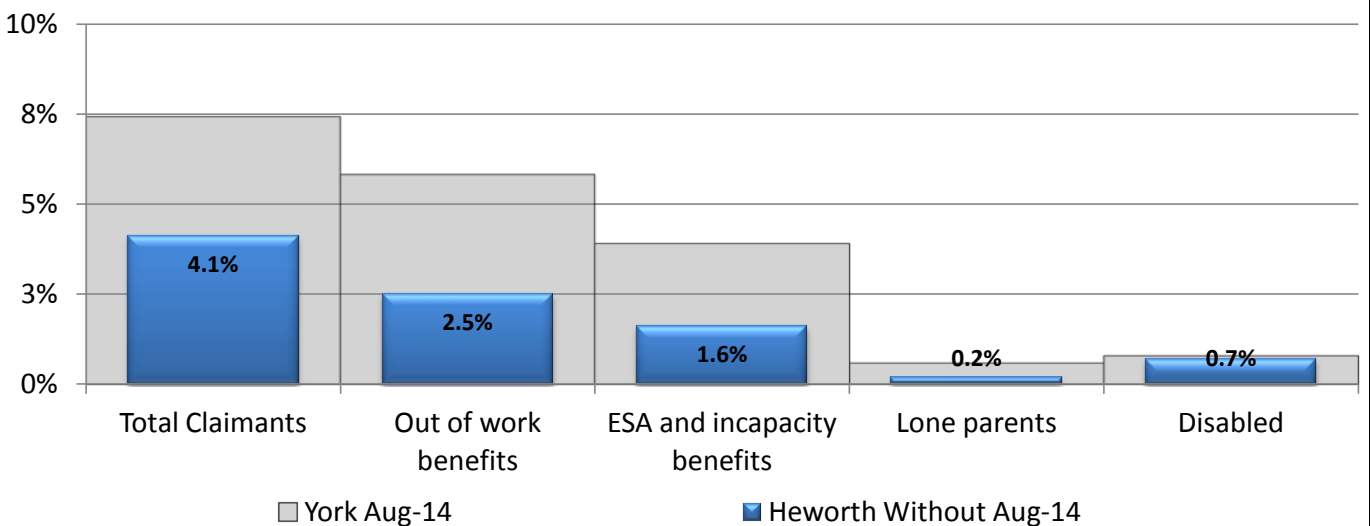
## Economy

### Benefits Claimants Numbers (NOMIS) By Ward



■ Total Claimants    ■ Out of work benefits    ■ ESA and incapacity benefits    ■ Lone parents    ■ Carers    ■ Disabled

### Benefits Claimants Rate (16-64) Benchmark (NOMIS)



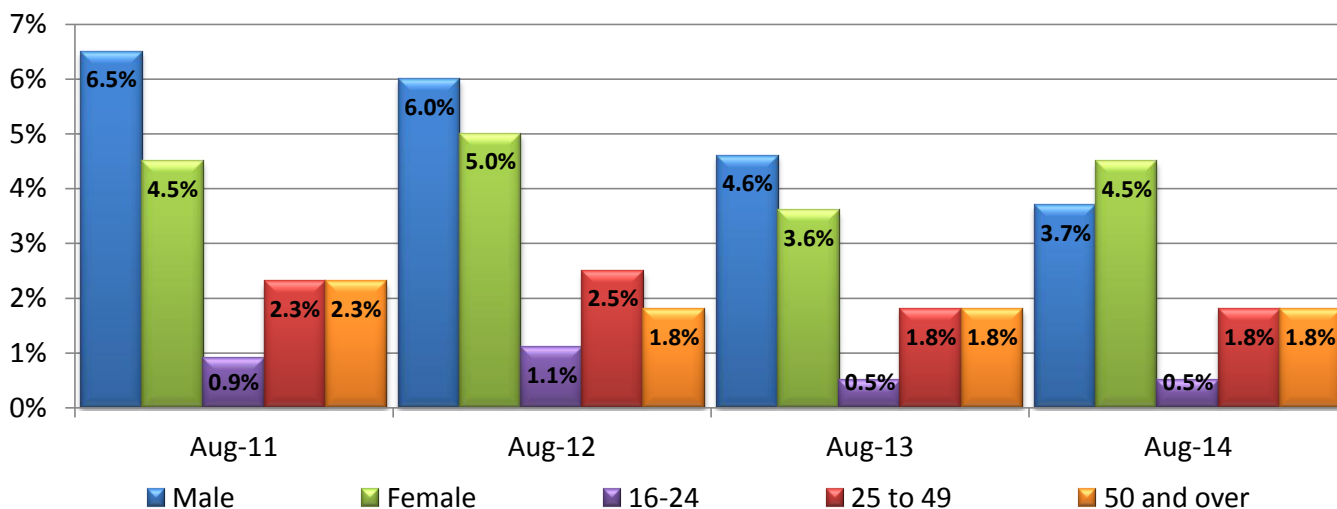
■ York Aug-14

■ Heworth Without Aug-14



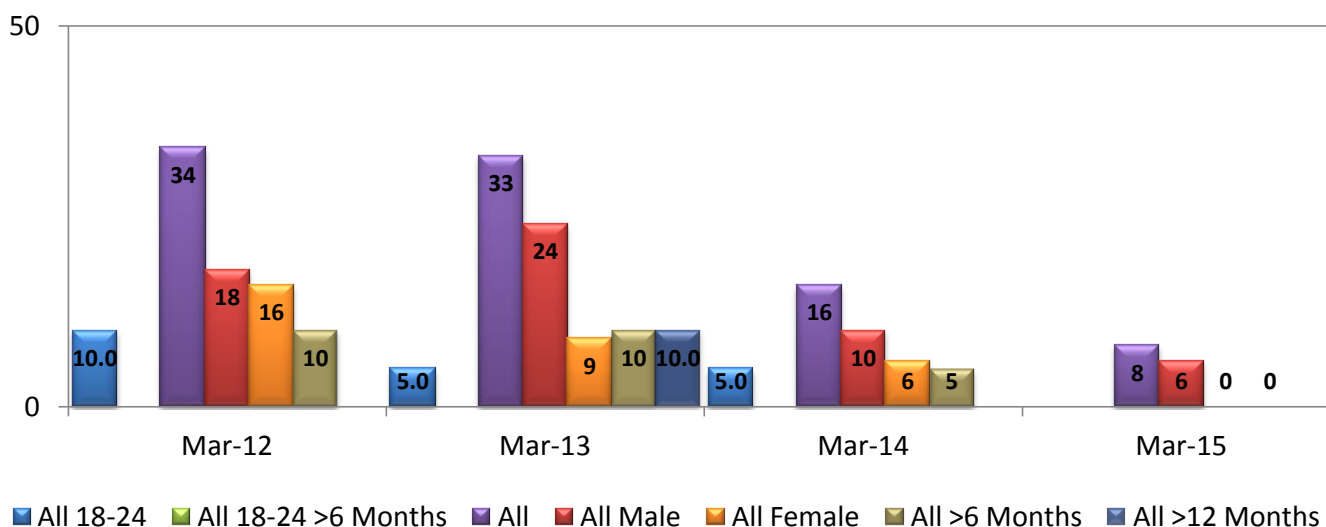
# Heworth Without

## Total Ward Claimant Rate (Age and Gender) Benchmark (NOMIS)

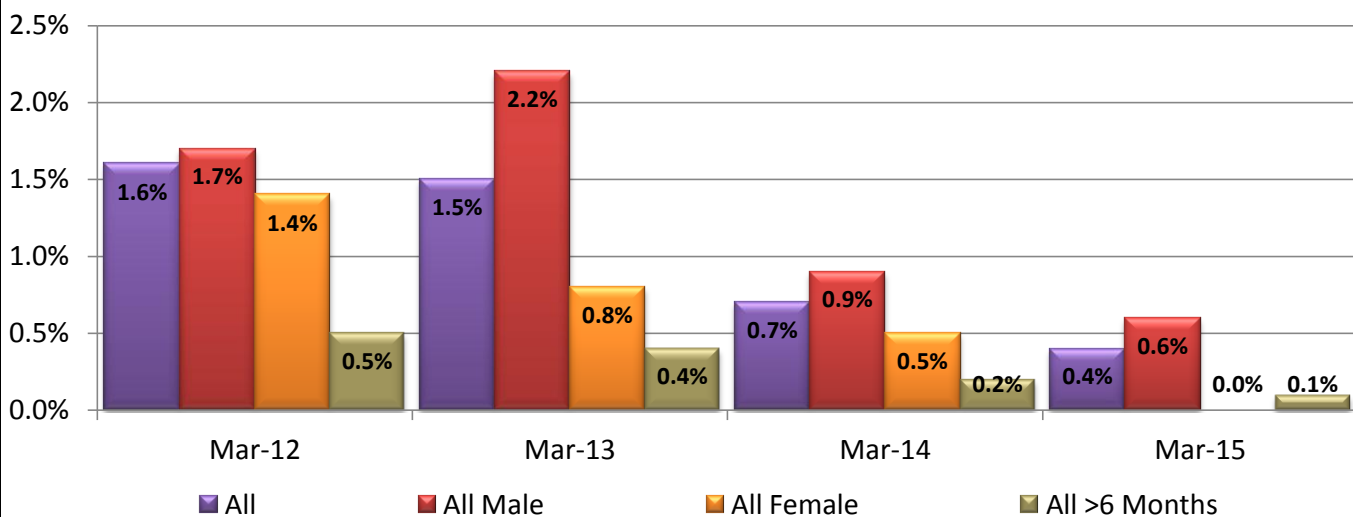


## Economy

### JSA Claimants Numbers (NOMIS) By Ward



### JSA Claimants Rate (NOMIS 16-64) By Ward

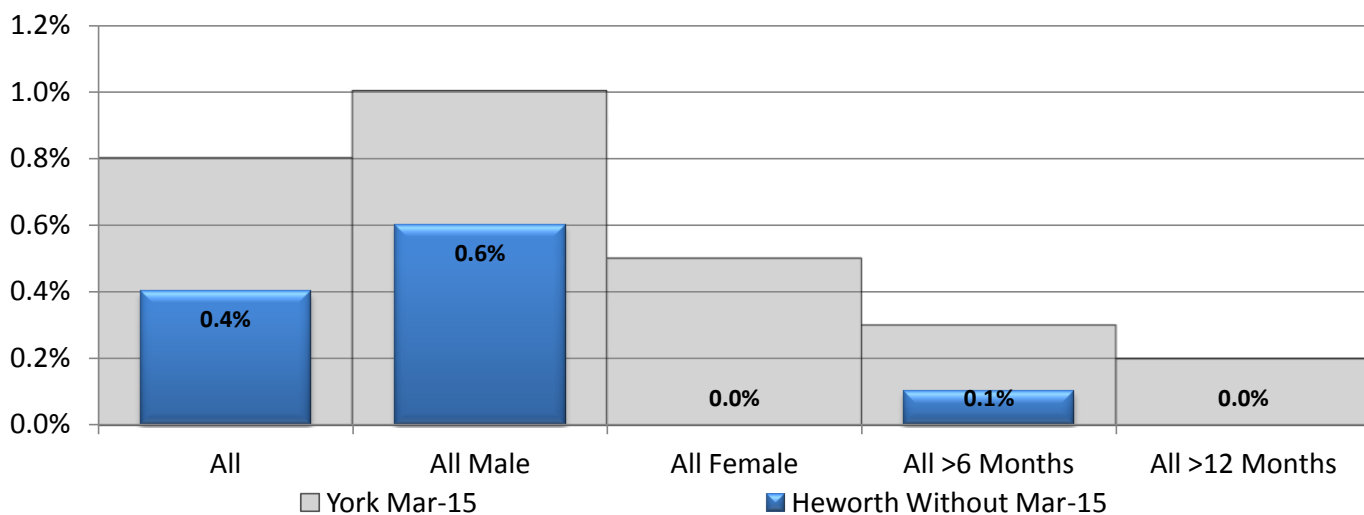






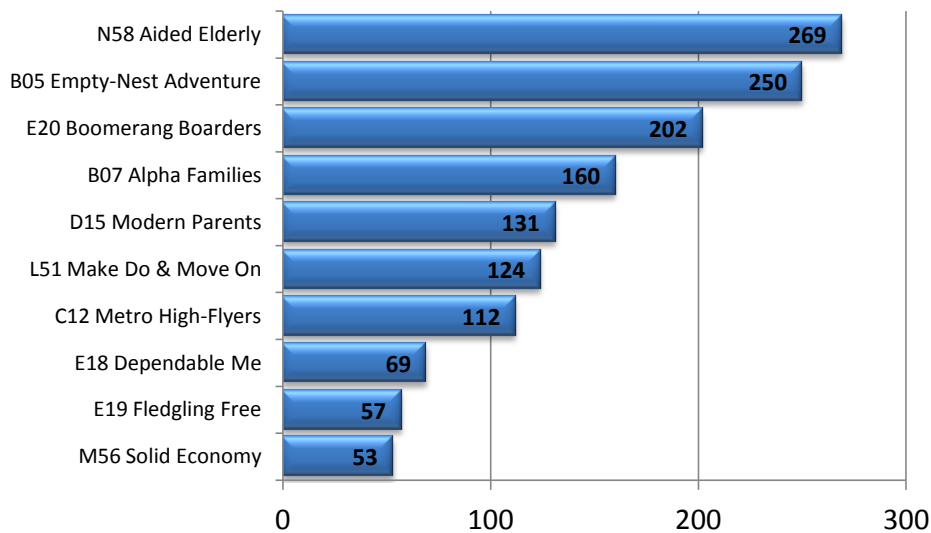
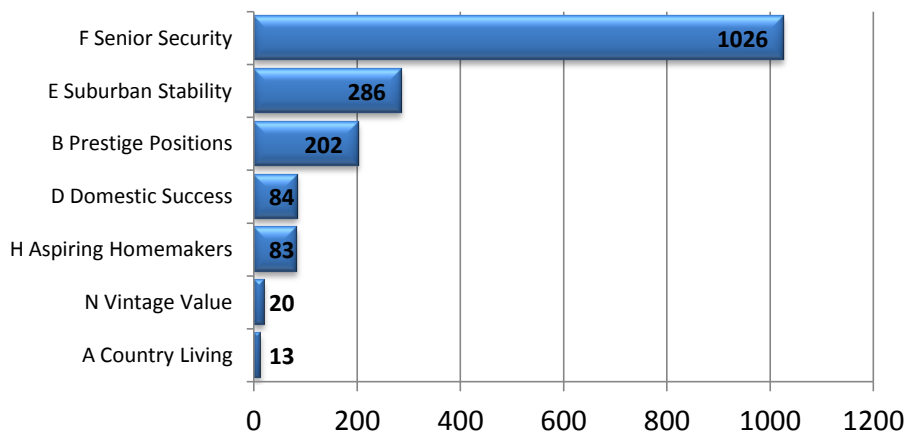
# Heworth Without

## JSA Claimants Rate Benchmark (NOMIS 16-64)



## Household Types

### Experian Groups (Experian 2014)



### Top 10 Types

This profile was created by the Business Intelligence Team.  
 Contact [business.intelligence@york.gov.uk](mailto:business.intelligence@york.gov.uk) for further information.



## Glossary

<b>Page 1</b>	BME – Black and Minority Ethnic community	
	NVQ – National Vocational Qualification	
<b>Page 2</b>	Census – 2011 survey carried out by the Office for National Statistics	<a href="http://www.ons.gov.uk/census">www.ons.gov.uk/census</a>
<b>Page 5</b>	APHO – Association of Public Health Observatories	<a href="http://www.apho.org.uk">http://www.apho.org.uk</a>
	COPD – Chronic obstructive pulmonary disease	
	SRR/SAR/SMR - Standardised ratios which represent the decrease or increase in registration/admission/mortality for the cohort against the general population (100 is equal to general population).	
<b>Page 6</b>	ASB – Anti-Social Behaviour	
	NYP – North Yorkshire Police	
<b>Page 7</b>	CTC – Child Tax Credit	
	DWP – Department for Work and Pensions	<a href="http://www.gov.uk/dwp">http://www.gov.uk/dwp</a>
	NOMIS – Official labour market statistics provided by the Office for National Statistics	<a href="http://www.nomisweb.co.uk/">http://www.nomisweb.co.uk/</a>
	ESA – Employment and Support Allowance	
<b>Page 8</b>	JSA – Job Seekers Allowance	
<b>Page 9</b>	Experian – Classification system used to provide a detailed understanding of citizen’s location, demographics, lifestyle and behaviour	