



York Summary

- York has 204,439 residents with 9.8% from a black and minority ethnic community group. 83.9% are in good health, with 15.3% stating that they have some limitation in day to day activities.
- £537.41 was the Average Weekly Household Income in 2011/2012 (£405.83 in 2007/2008).
- 66% own their own home, either outright or with a mortgage, 18% are private renters and 14% are social tenants.
- 73.5% of residents have a NVQ level 1 - 4 qualification and 18.0% have no qualifications at all.
- 10.6% of children live in poverty and there are 9.0% of households in fuel poverty.
- 6.9% of the working population (aged 16-64) claim out of work benefits and 0.8% claim job seekers allowance.

Haxby and Wigginton Ward



0 0.5
kilometres

Scale: 1:31,890

Reproduced from the Ordnance Survey with the
Permission of the Controller of Her Majesty's
Stationary Office © Crown copyright.
Unauthorised reproduction infringes Crown
copyright and may lead to prosecution or civil
proceedings. City of York Council 100020818 2010.

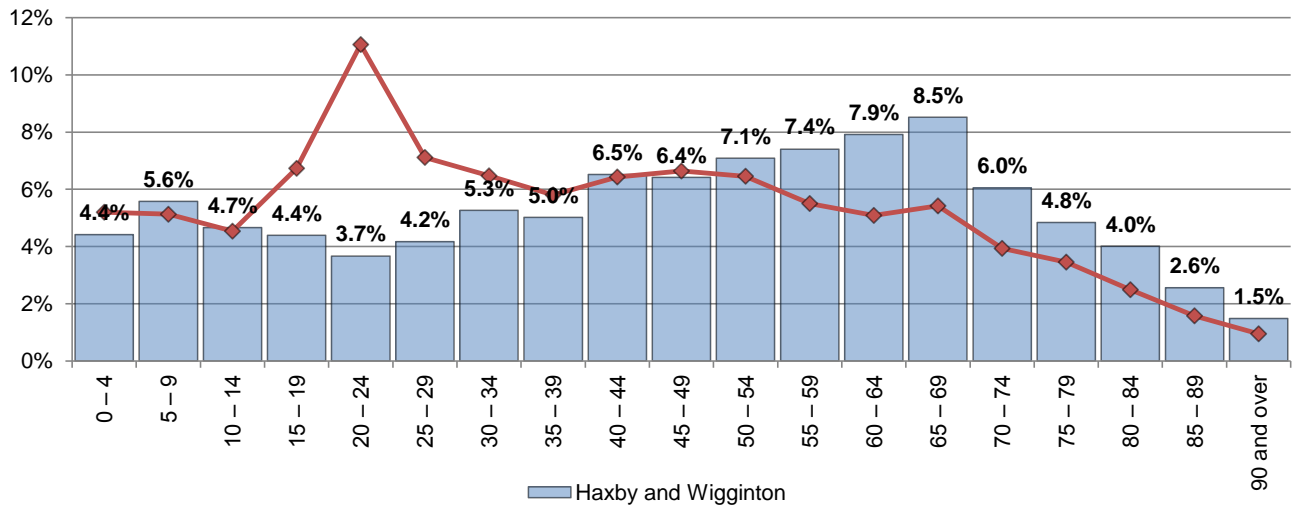
Ward Summary

- Haxby and Wigginton has 12,010 residents with 3.5% from a black and minority ethnic community group. 82.3% are in good health, with 17.8% stating that they have some limitation in day to day activities.
- £578.23 was the Average Weekly Household Income in 2011/2012 (£445.00 in 2007/2008).
- 88% own their own home, either outright or with a mortgage, 6% are private renters and 5% are social tenants.
- 71.3% of residents have a NVQ level 1 - 4 qualification and 19.5% have no qualifications at all.
- 3.8% of children live in poverty and there are 6.5% of households in fuel poverty.
- 3.8% of the working population claim out of work benefits and 0.5% claim job seekers allowance.

Haxby and Wigginton Ward Profile



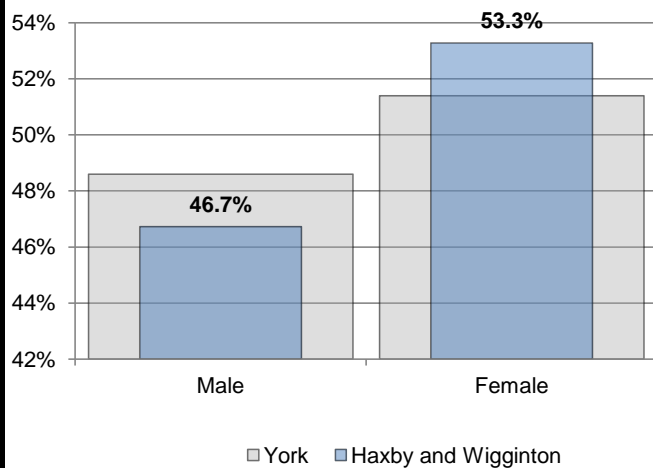
Population by Age



Source: ONS - 2014 Ward population estimates

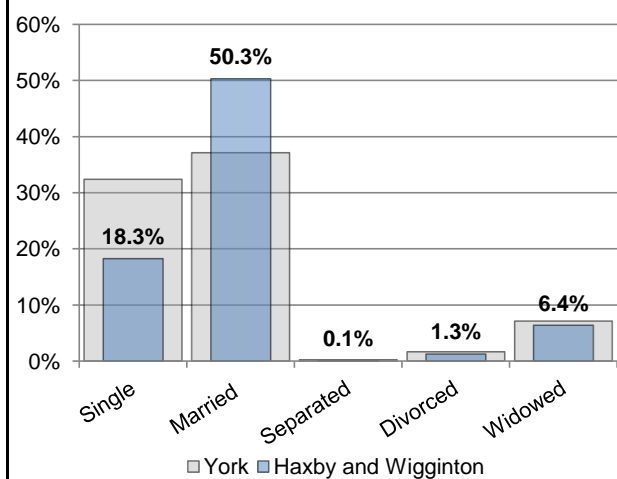
Census 2011 Update

Gender



Source: Census 2011

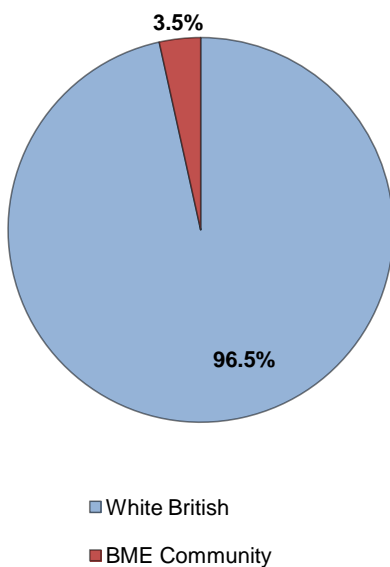
Marital Status



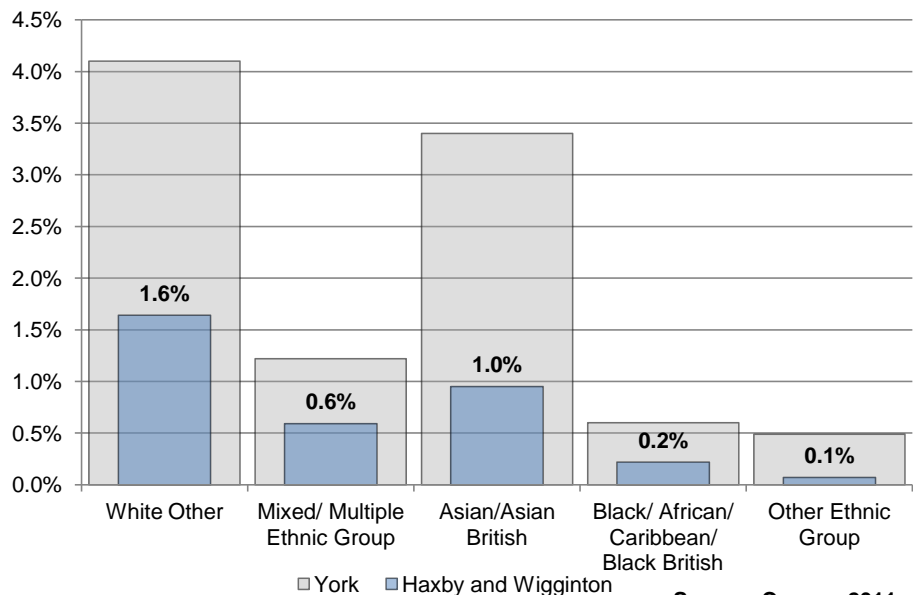
Source: Census 2011

Ethnicity

Ward Ethnicity



BME Community (does not include White British)



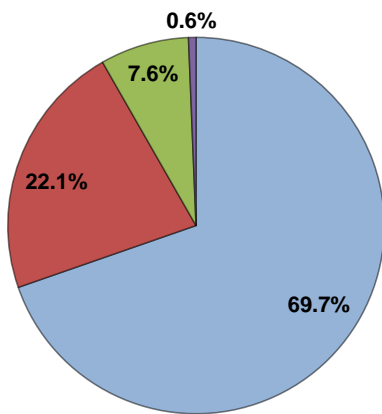
Source: Census 2011

Haxby and Wigginton Ward Profile

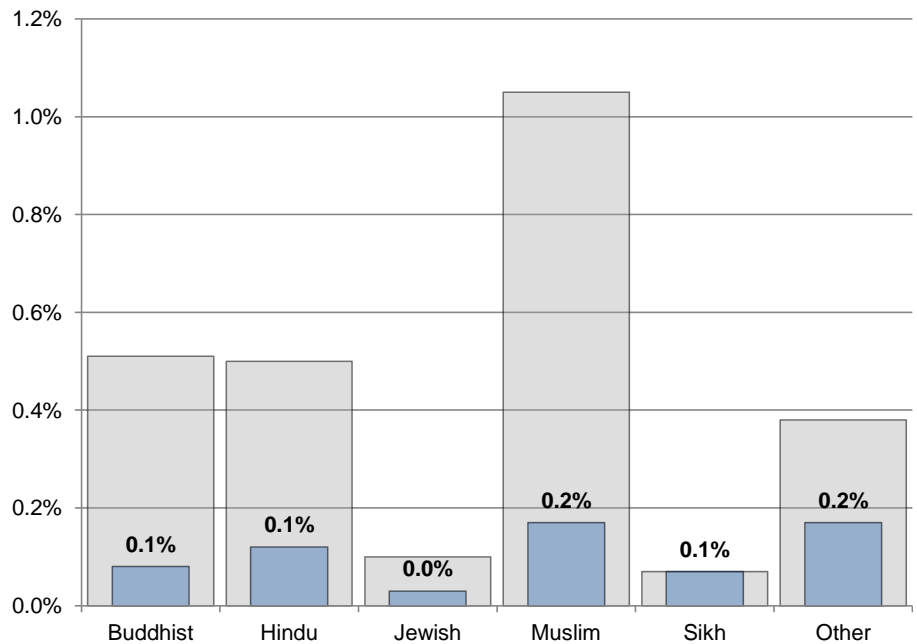


Religion

Other Religions



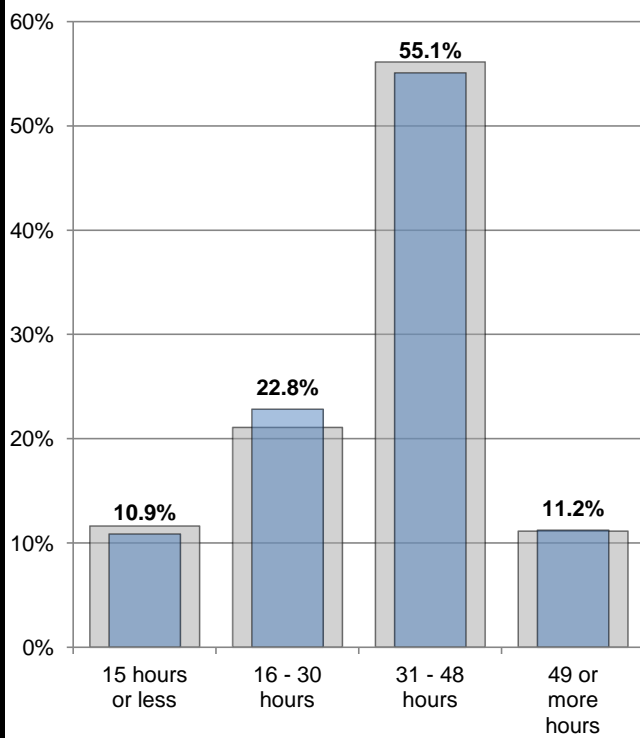
- Christian
- None
- Not stated
- Other Religions



■ York ■ Haxby and Wigginton

Source: Census 2011

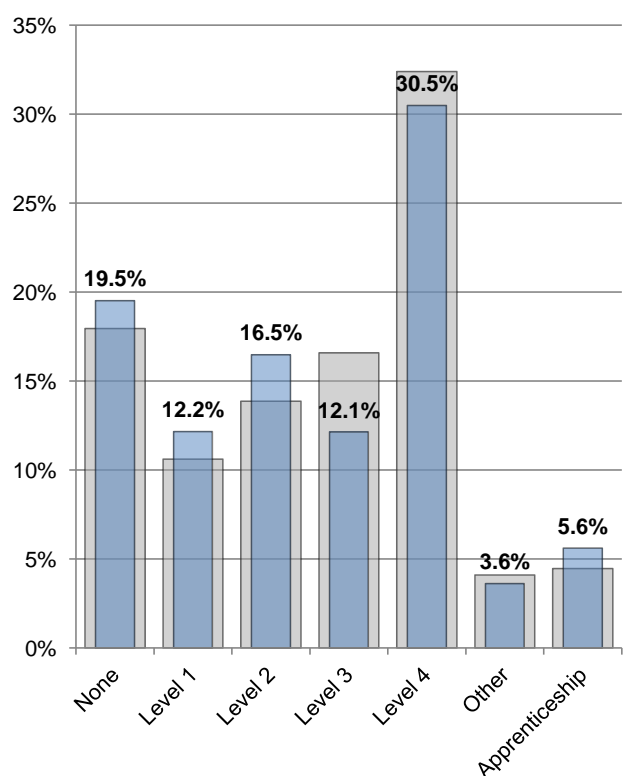
Hours Worked



■ York ■ Haxby and Wigginton

Source: Census 2011

Qualifications



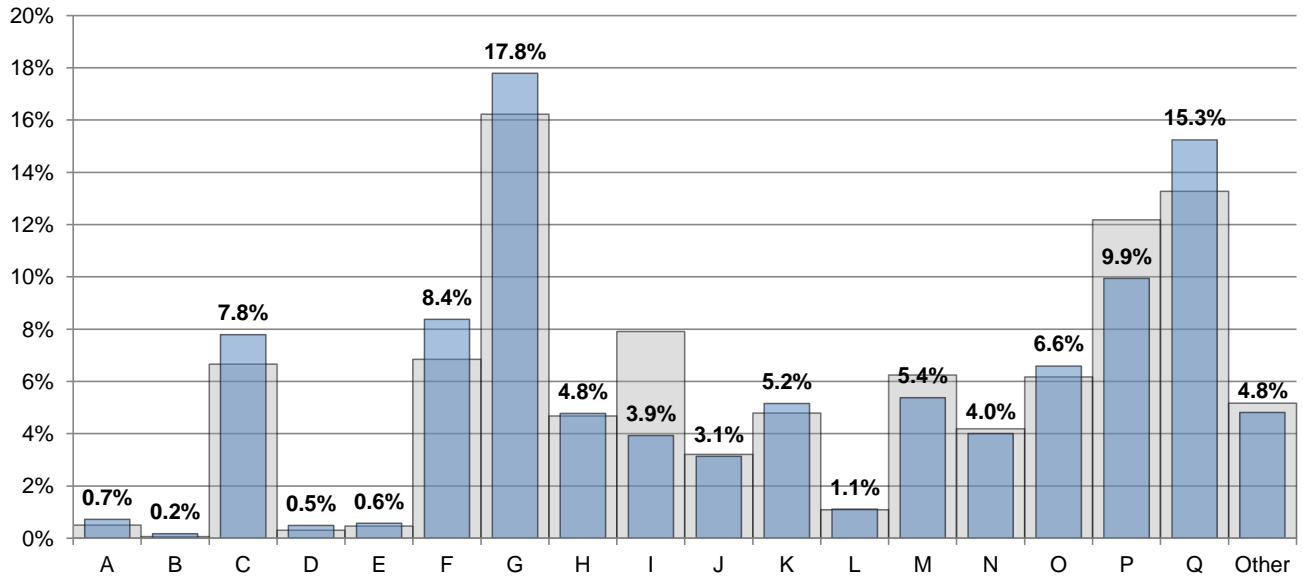
■ York ■ Haxby and Wigginton

Source: Census 2011

Haxby and Wigginton Ward Profile



Industry



A: Agriculture, forestry and fishing, B: Mining and quarrying, C: Manufacturing, D: Electricity, gas, steam and air conditioning supply, E: Water supply; sewerage, waste management and remediation activities, F: Construction

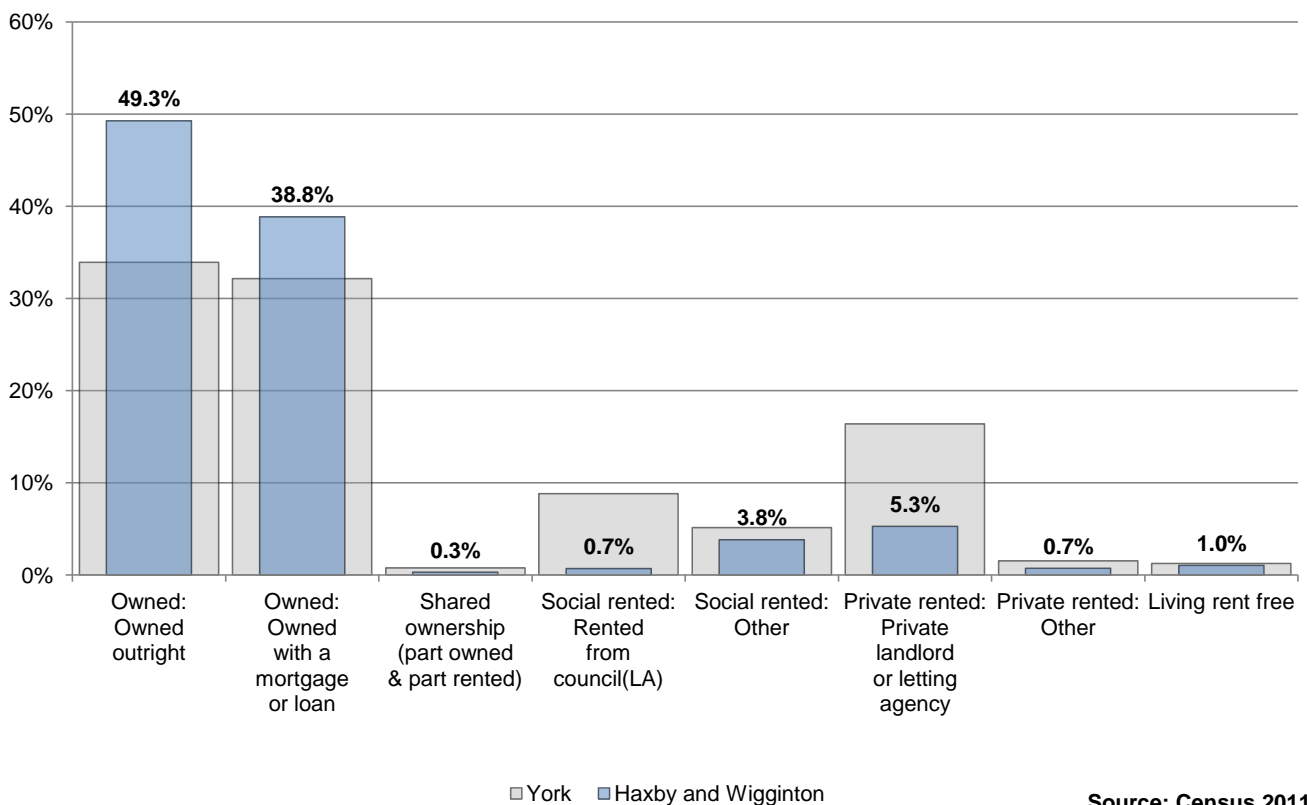
G: Wholesale and retail trade; repair of motor vehicles and motor cycles, H: Transport and storage, I: Accommodation and food service activities, J: Information and communication, K: Financial and insurance activities, L: Real estate activities

M: Professional, scientific and technical activities, N: Administrative and support service activities, O: Public administration and defence; compulsory social security, P: Education, Q: Human health and social work activities

■ York

Source: Census 2011

Tenure



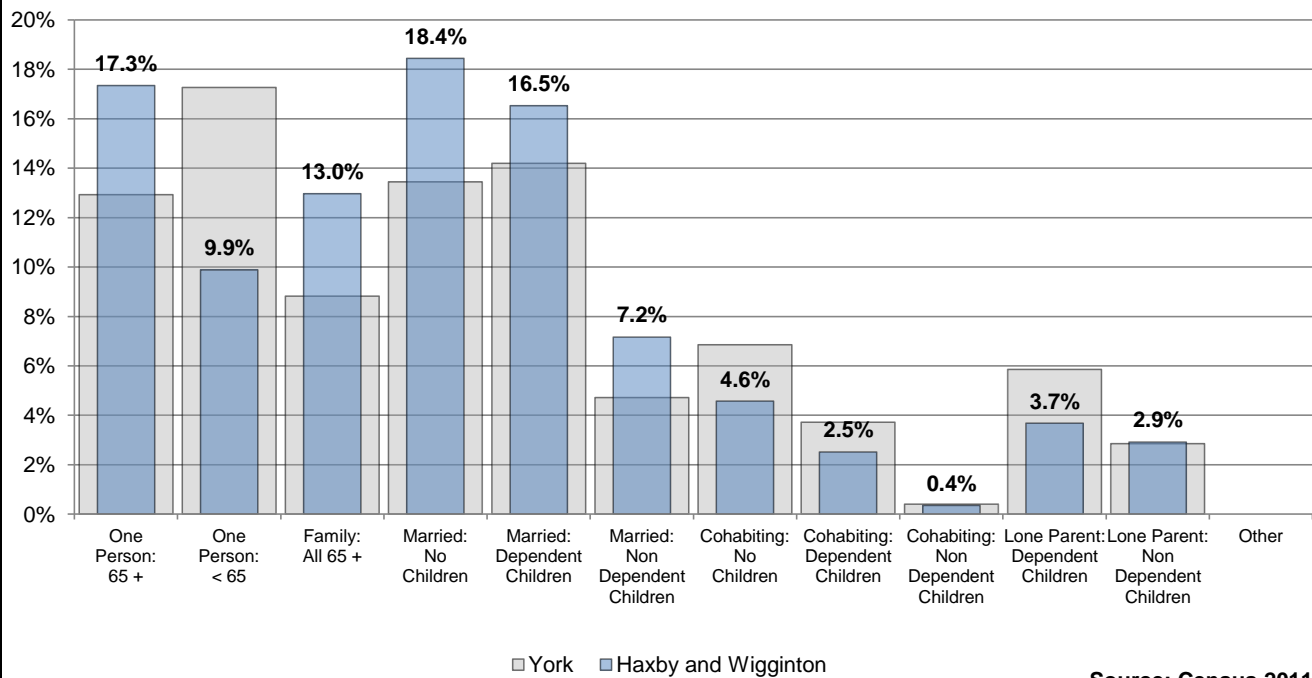
■ York ■ Haxby and Wigginton

Source: Census 2011

Haxby and Wigginton Ward Profile



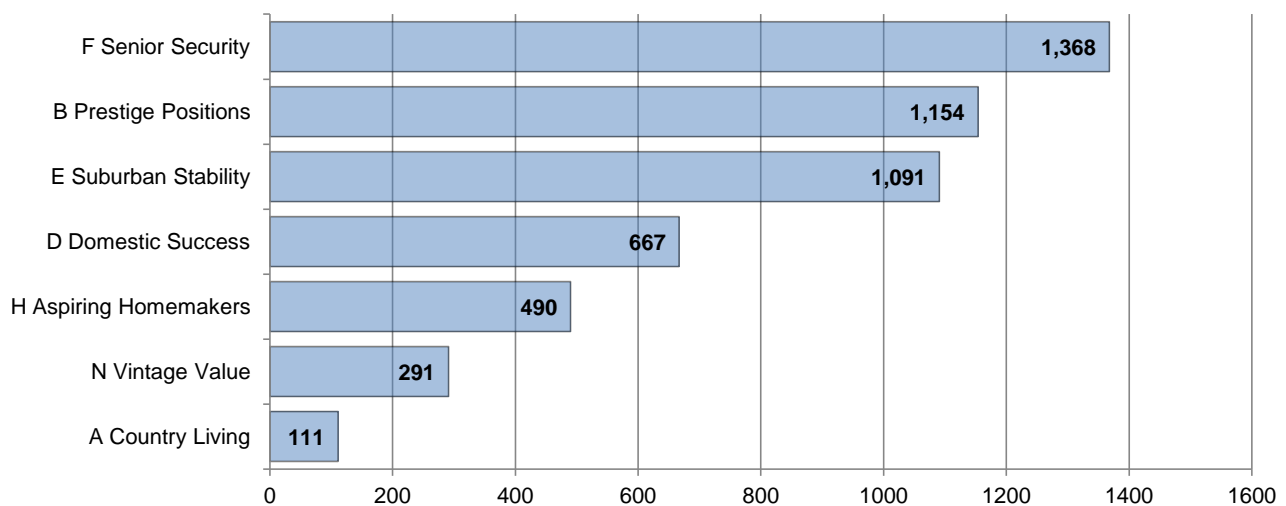
Household Composition



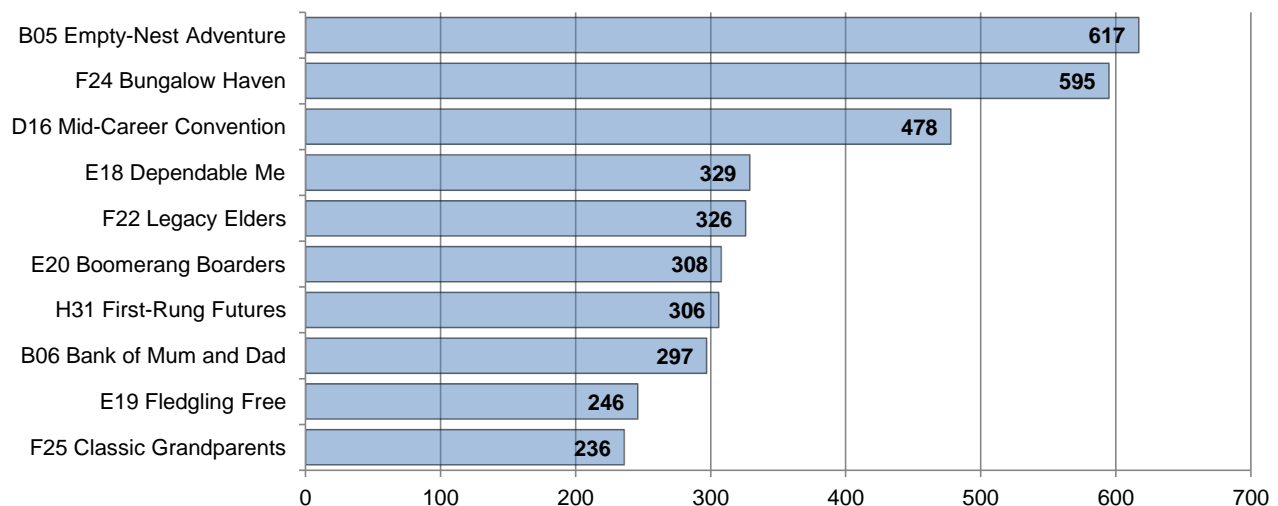
Source: Census 2011

Household Types

Experian Groups (2015)



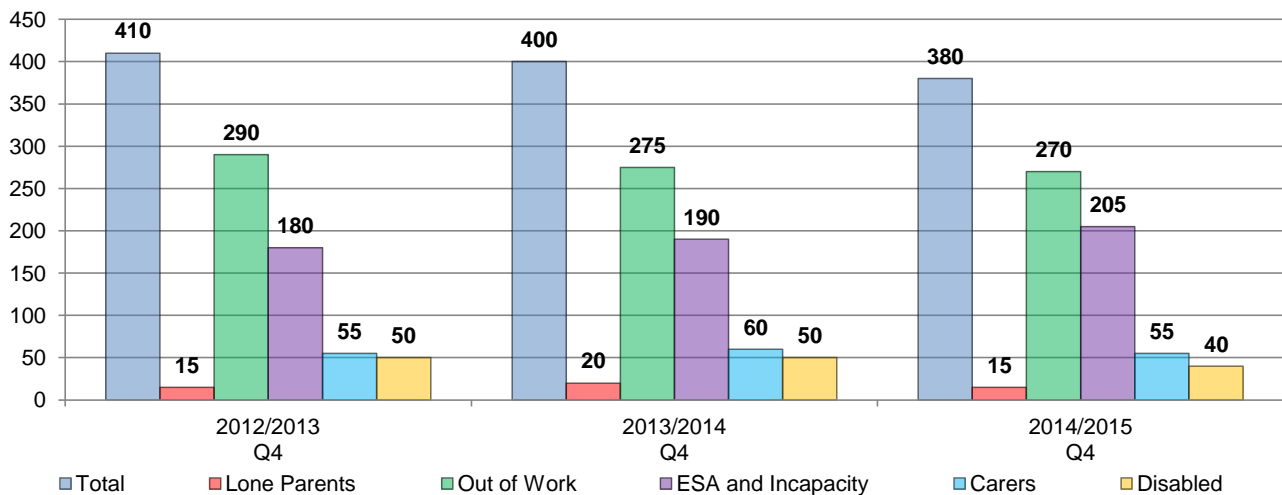
Experian Types (2015)





Economy

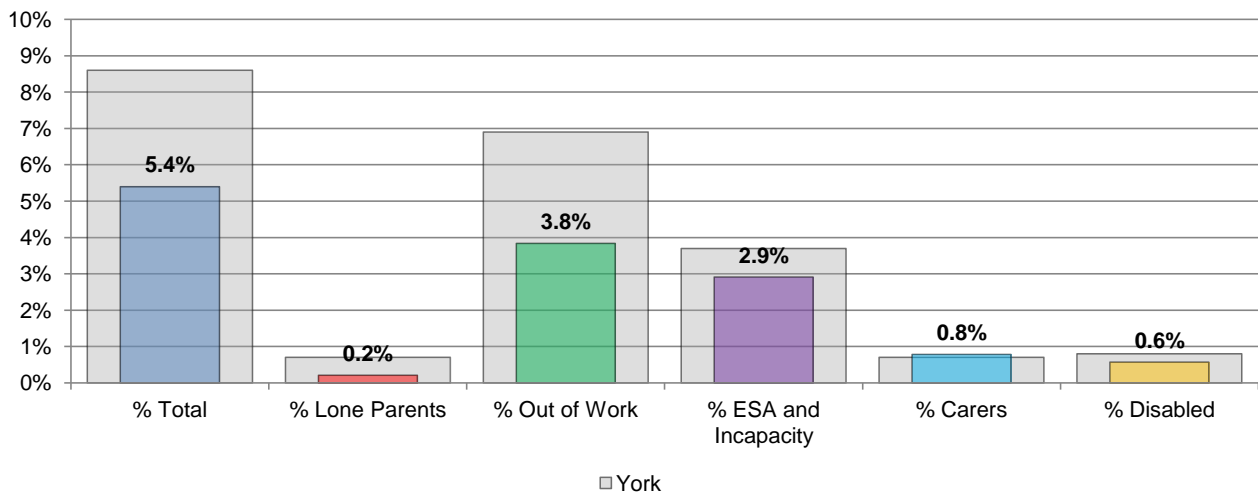
**Benefit Claimant Numbers
Working age Population (16-64)**



Source: Department for Work and Pensions (DWP)

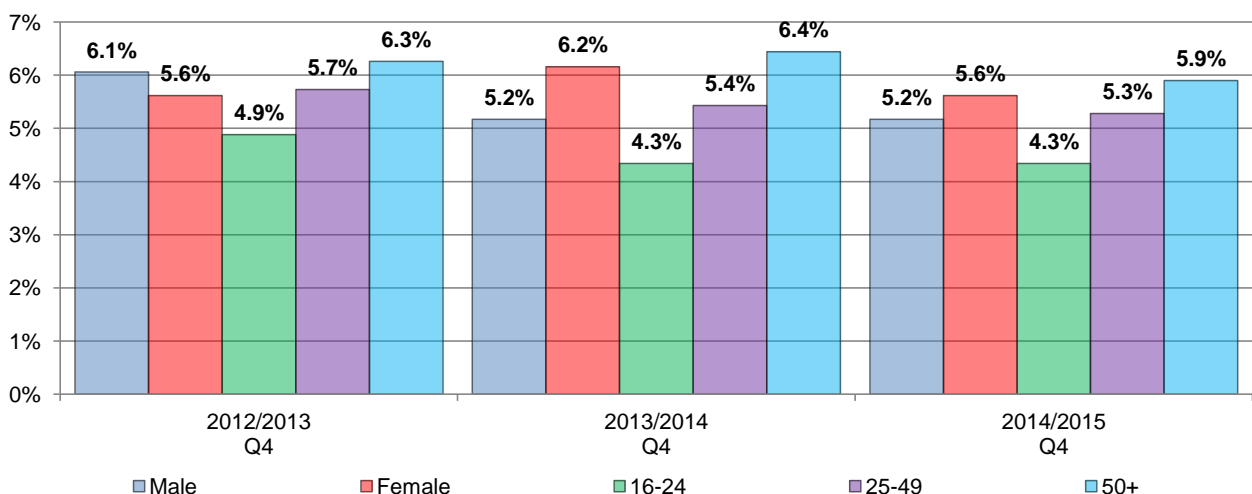
**Benefit Claimant Rate
Working age Population (16-64)**

Q4 2014/2015



Source: Department for Work and Pensions (DWP)

**Total Benefit Claimant Rate (Age and Gender)
Working age Population (16-64)**

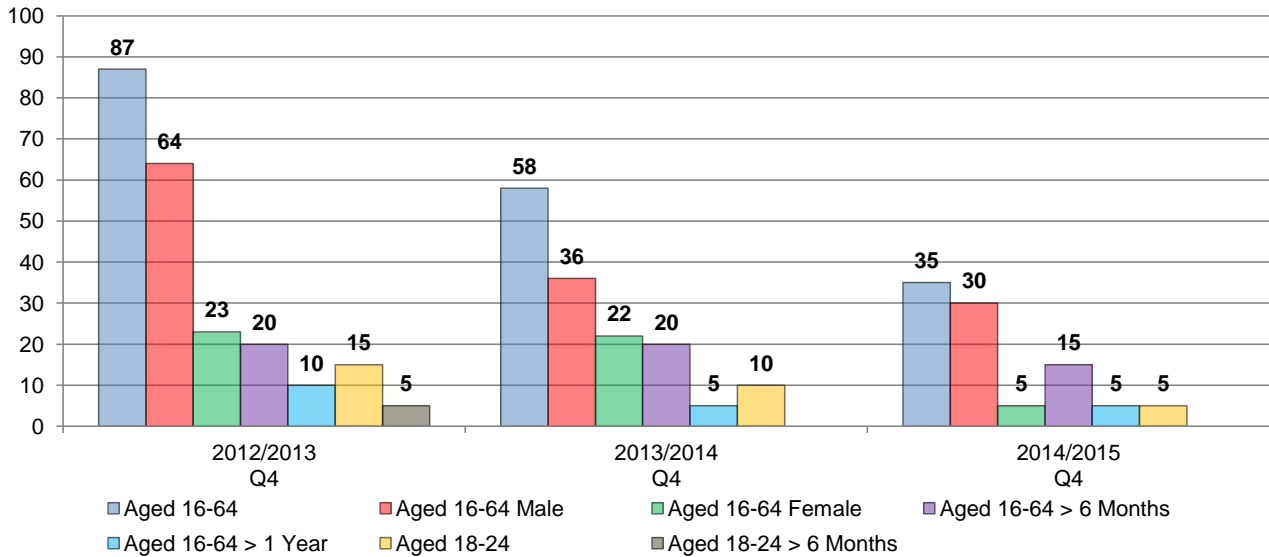


Source: Department for Work and Pensions (DWP)

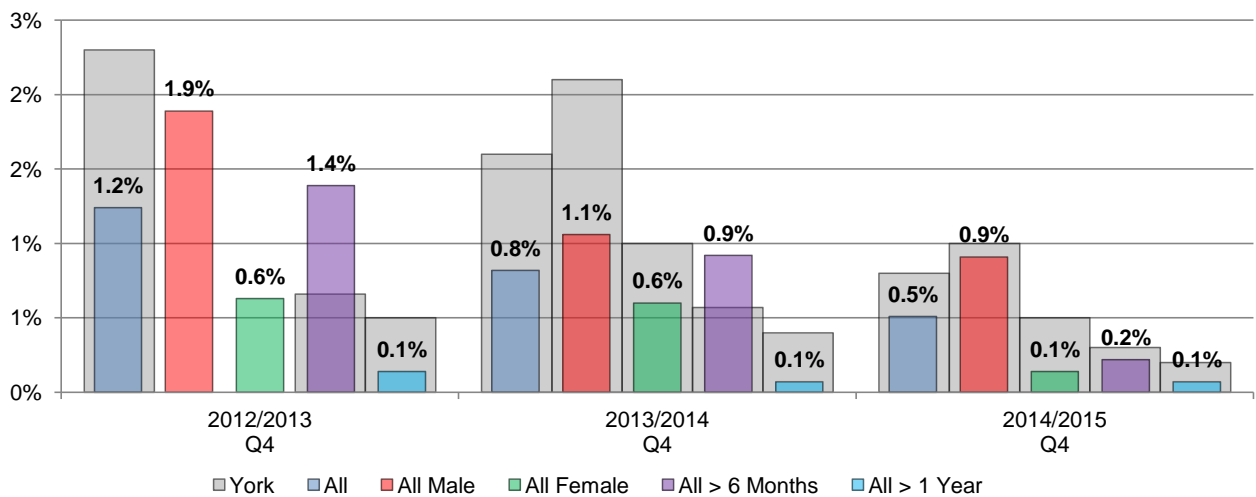


Economy

JSA Claimant Numbers



JSA Claimant Rate (Age and Gender)
Working age Population (16-64)

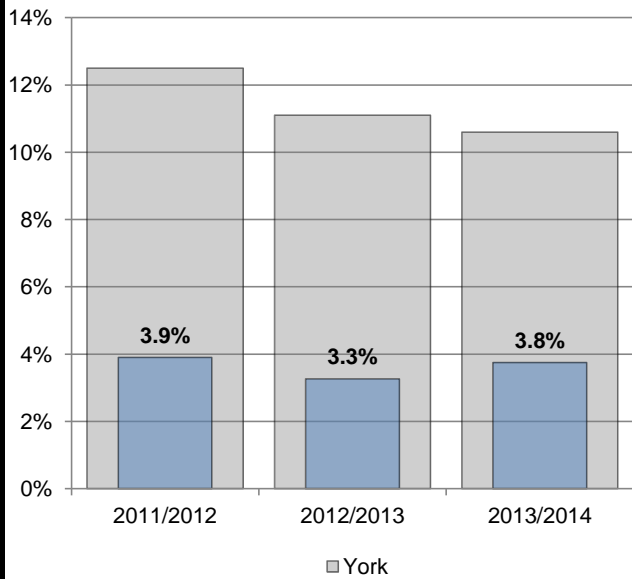




Poverty

Child Poverty

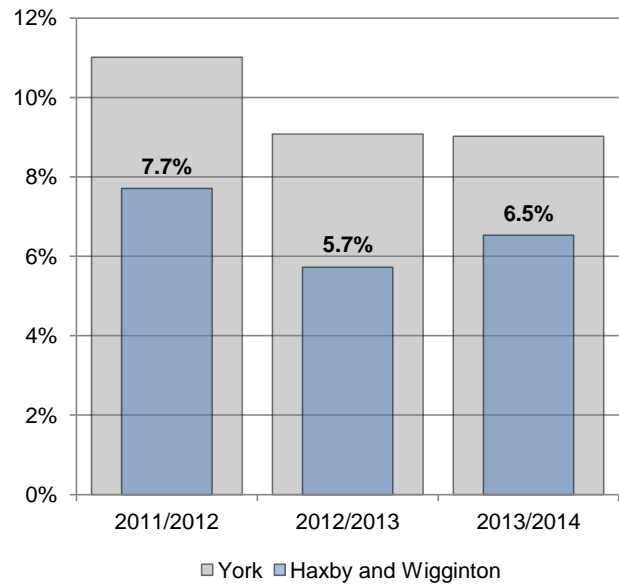
The proportion of children living in families in receipt of out-of-work (means-tested) benefits or in receipt of tax credits where their reported income is less than 60 per cent of UK median income.



Source: HM Revenue & Customs

Fuel Poverty

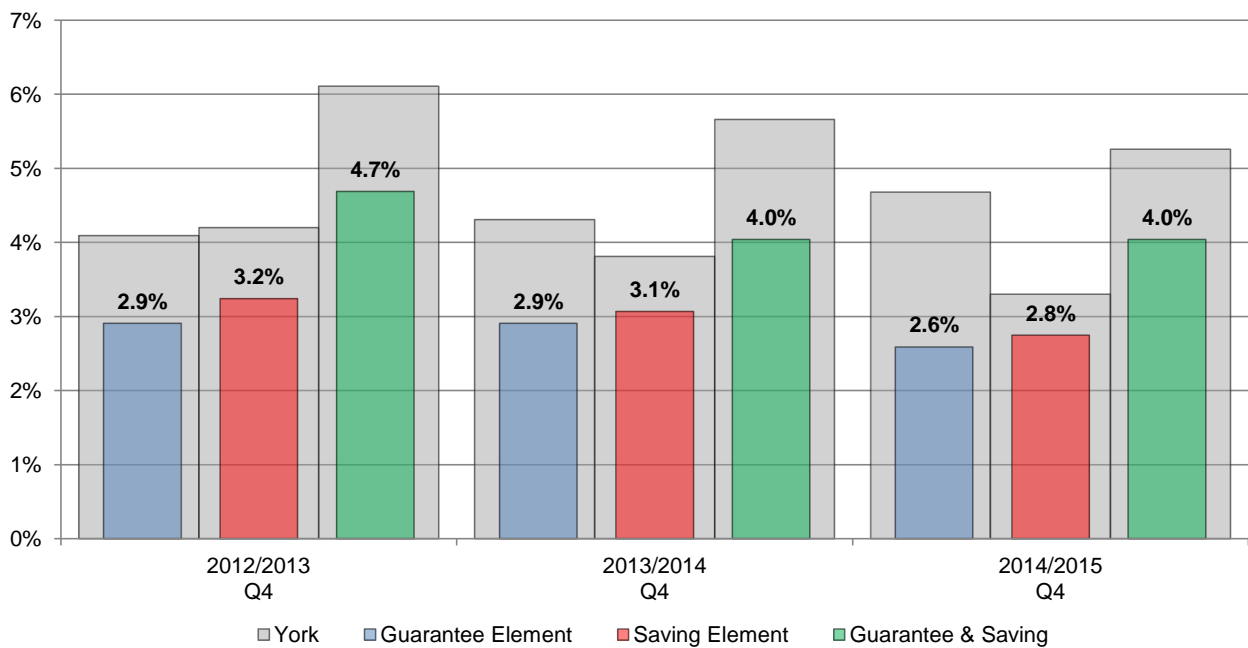
A household is said to be fuel poor if it needs to spend more than 10% of its income on fuel to maintain an adequate standard of warmth.



Source: Department of Energy & Climate Change

Pension Credit

Pension Credit is an income-related benefit made up of 2 parts - Guarantee Credit and Savings Credit.



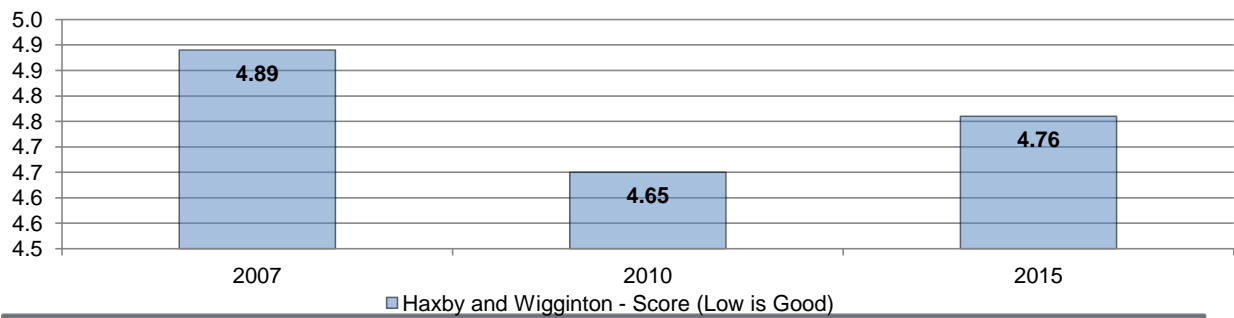
Source: Department for Work and Pensions (DWP)

Haxby and Wigginton Ward Profile



Indices of Multiple Deprivation

The IMD measures and rates a number of different domains affecting quality of life including income, employment, education and skills, health and disability, crime, barriers to services and quality of living environments.



Ward Rank in York (Low is Bad)
20 out of 21

18 out of 21

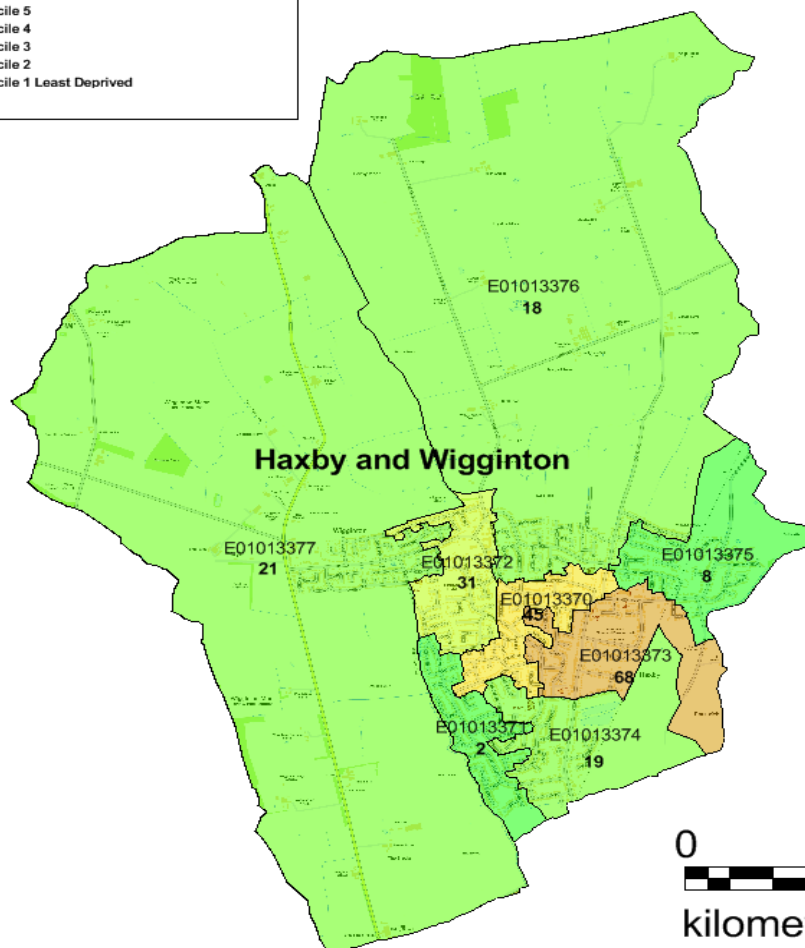
19 out of 21

Source: Department for Communities and Local Government (DCLG)

Index of Multiple Deprivation 2015 - Haxby & Wigginton: breakdown by LSOA

Key to Deprivation Deciles
1 is least deprived LSOA, 120 is most deprived

- Decile 10 Most Deprived
- Decile 9
- Decile 8
- Decile 7
- Decile 6
- Decile 5
- Decile 4
- Decile 3
- Decile 2
- Decile 1 Least Deprived



kilometres

Scale: 1:31,030

Produced by:
Business Intelligence Hub

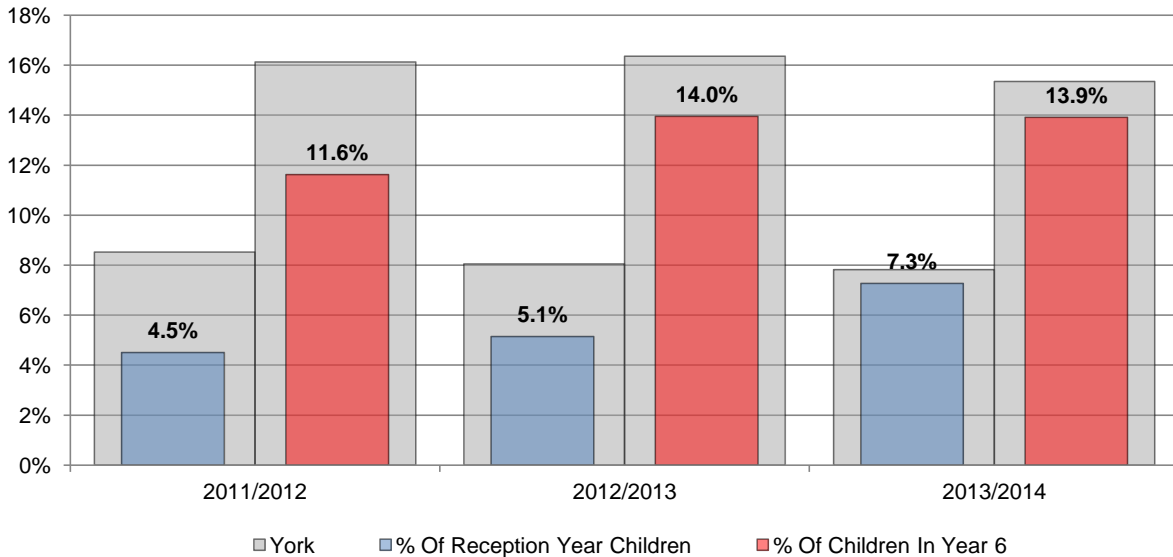
Created 09/10/2015

Reproduced from the Ordnance Survey with the Permission of the Controller of Her Majesty's Stationery Office © Crown copyright. Unauthorised reproduction infringes Crown copyright and may lead to prosecution or civil proceedings. City of York Council 100020818 2010.

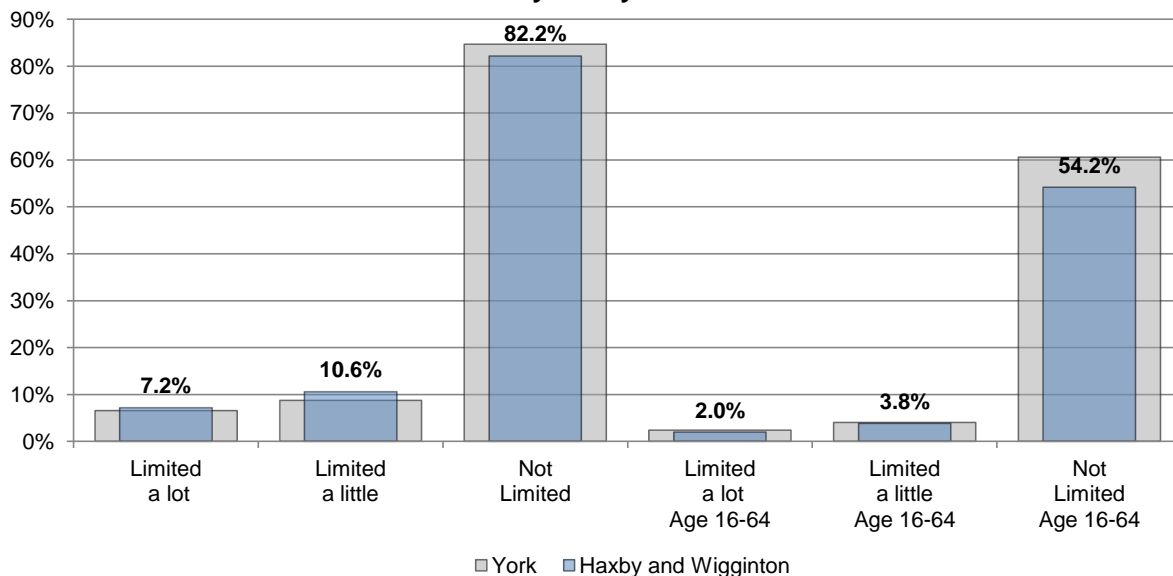


Health and Wellbeing

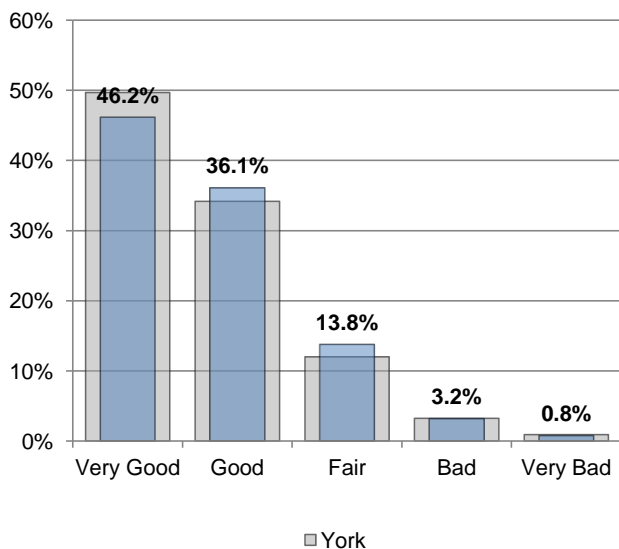
Childhood Obesity



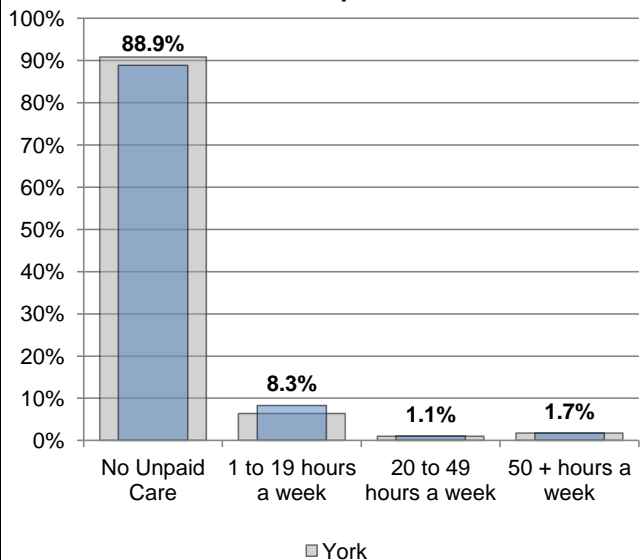
Day to Day Activities



General Health



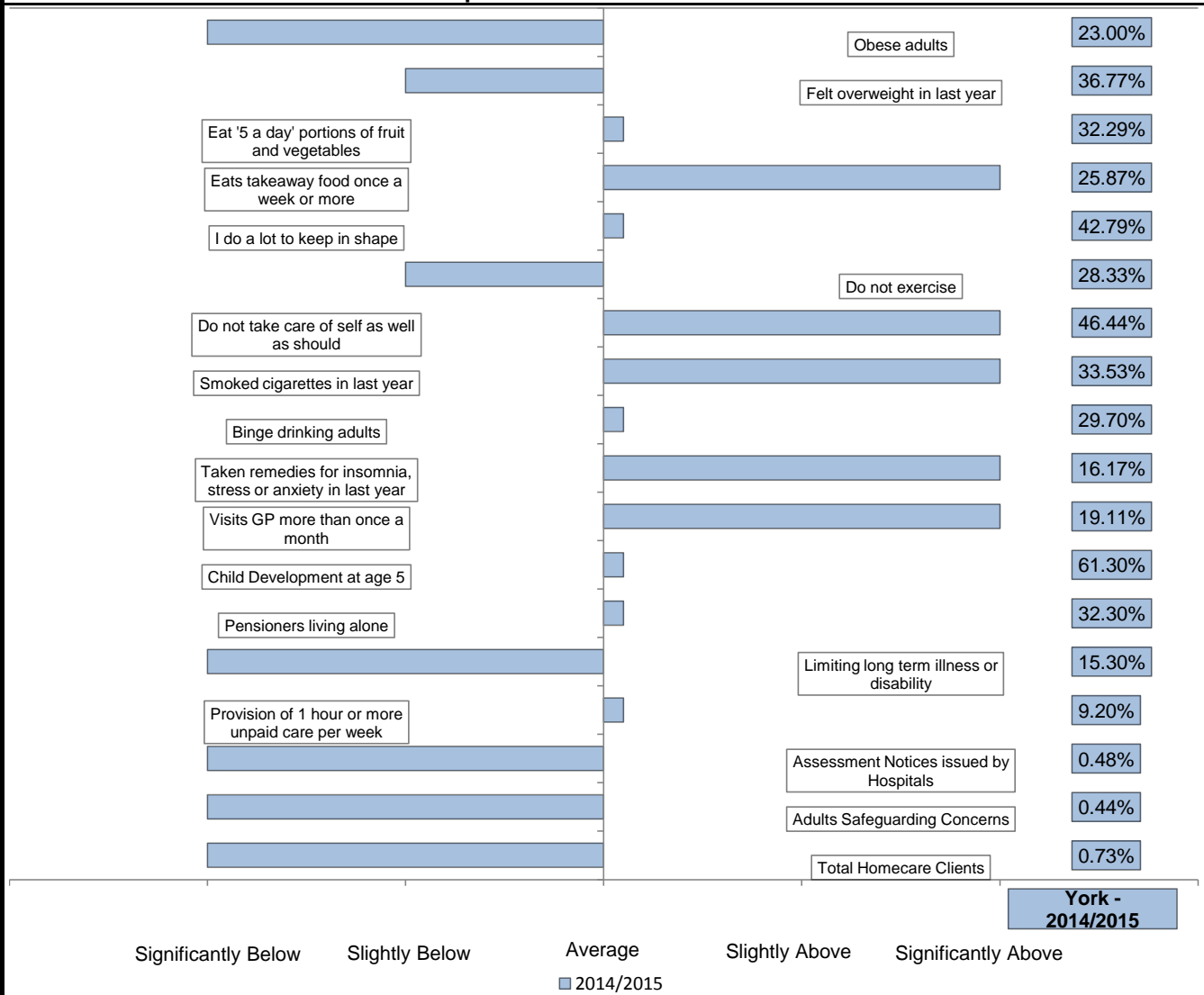
Provide Unpaid Care



Haxby and Wigginton Ward Profile

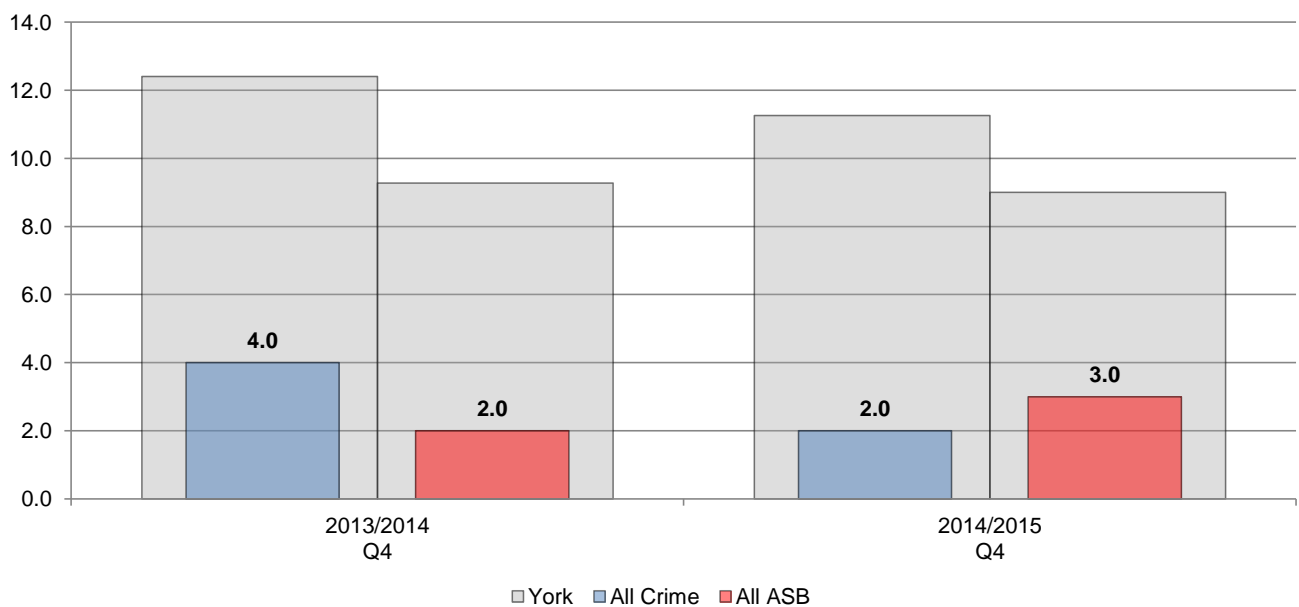


Experian & Public Health Data



Crime and Anti-Social Behaviour

Total Crime and Total Anti-Social Behaviour per 1,000 population

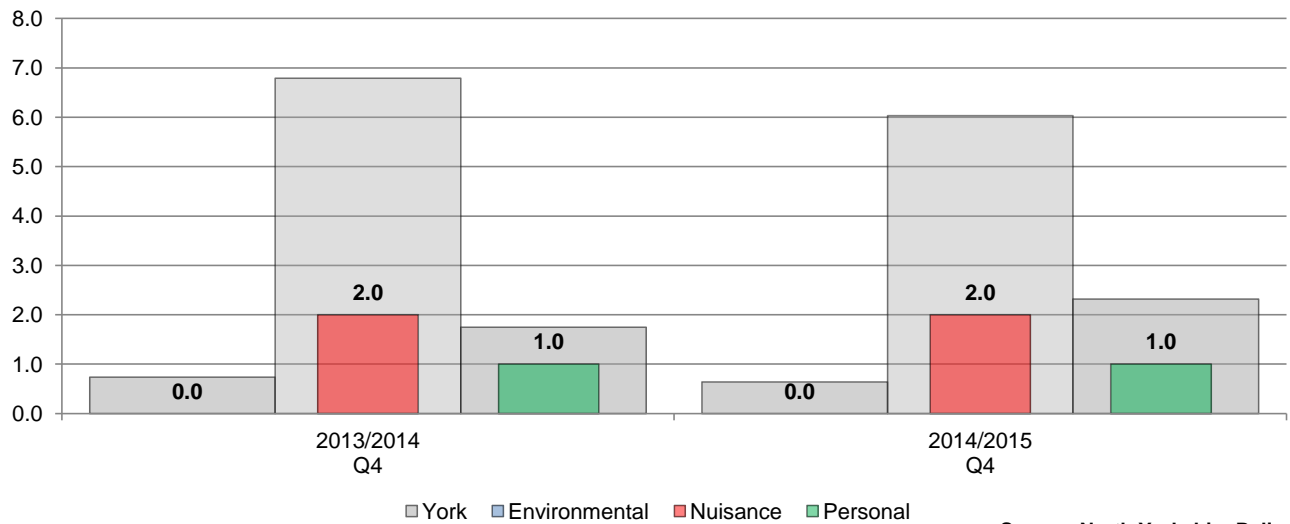


Source: North Yorkshire Police

Haxby and Wigginton Ward Profile

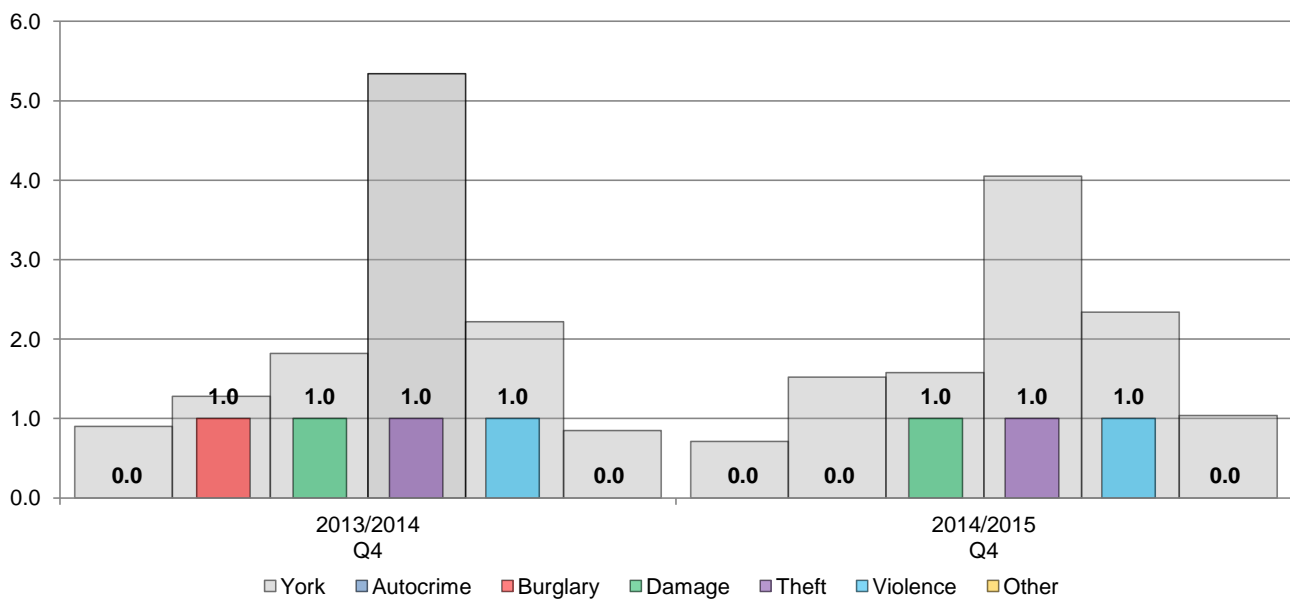


ASB per 1,000 population



Source: North Yorkshire Police

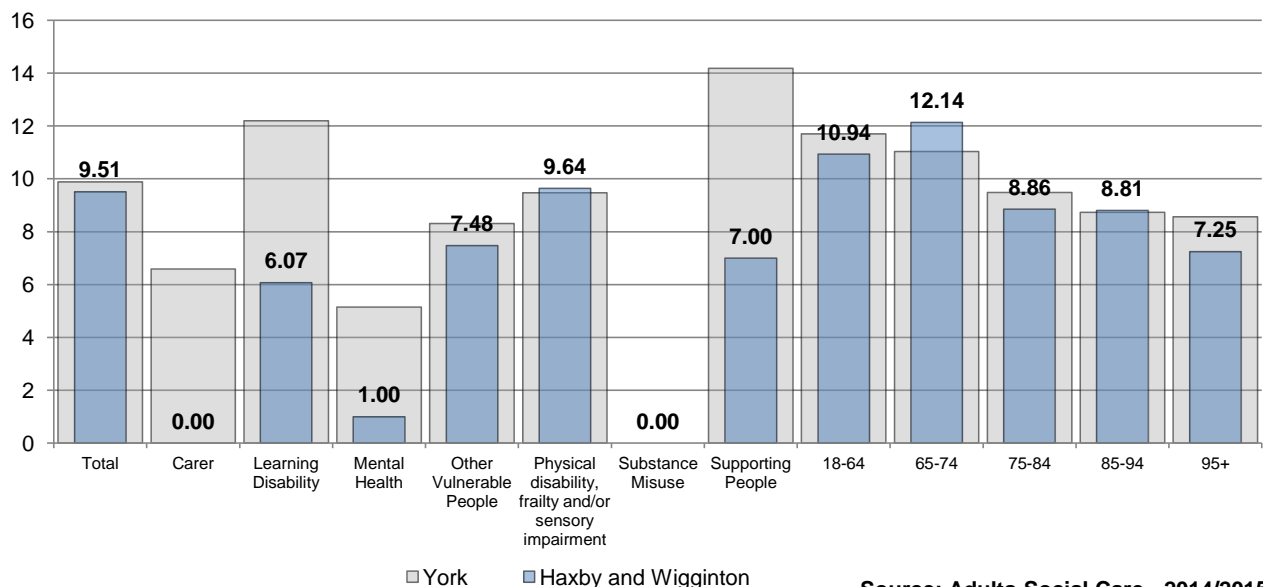
Crime Rate per 1,000 population



Source: North Yorkshire Police

Adult Social Care

Average Weekly Homecare Hours by Client Type and Age

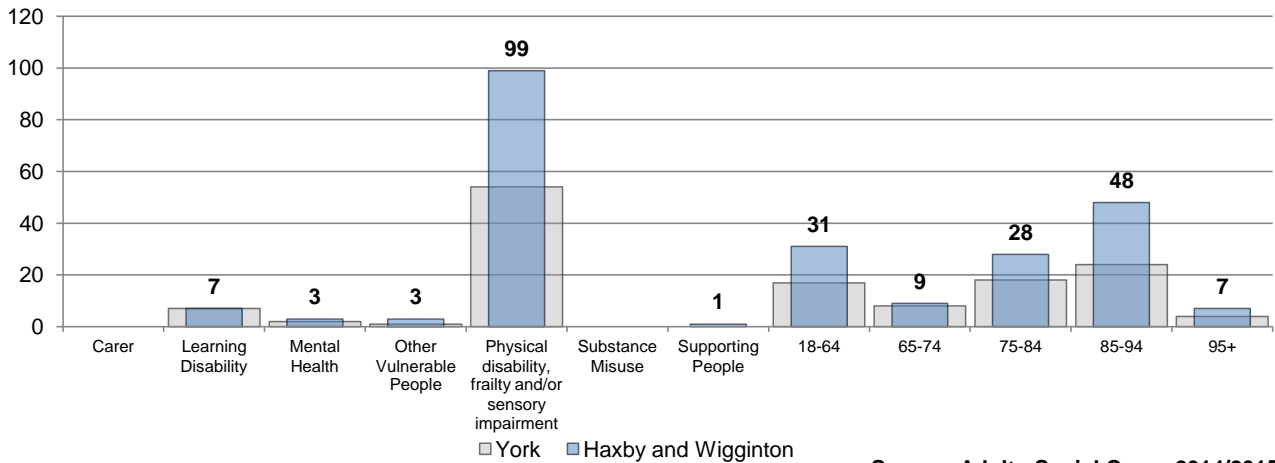


Source: Adults Social Care - 2014/2015

Haxby and Wigginton Ward Profile

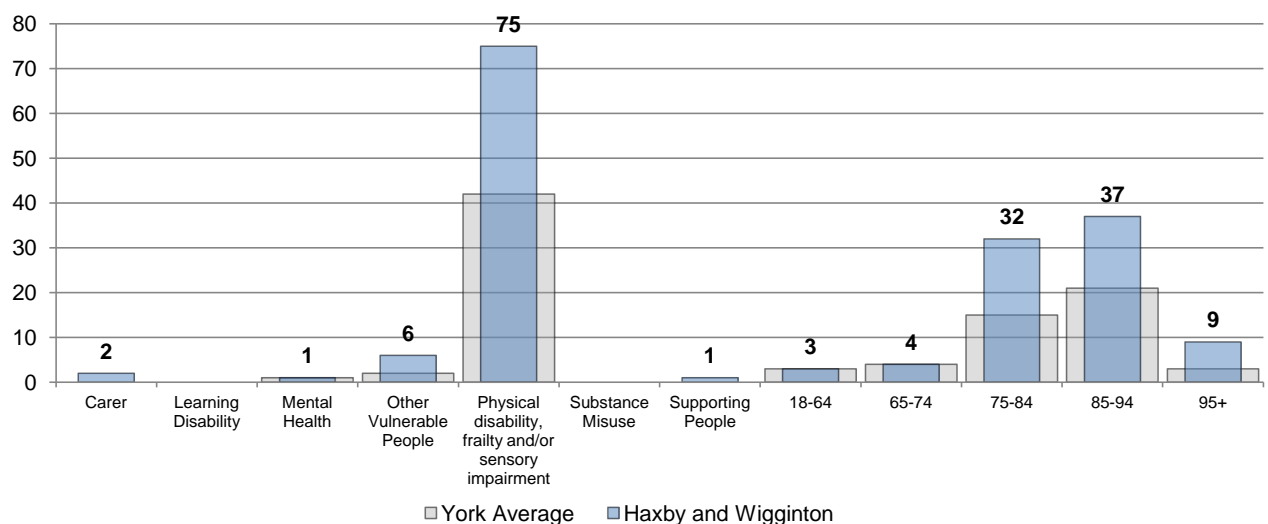


Homecare Clients by Type and Age



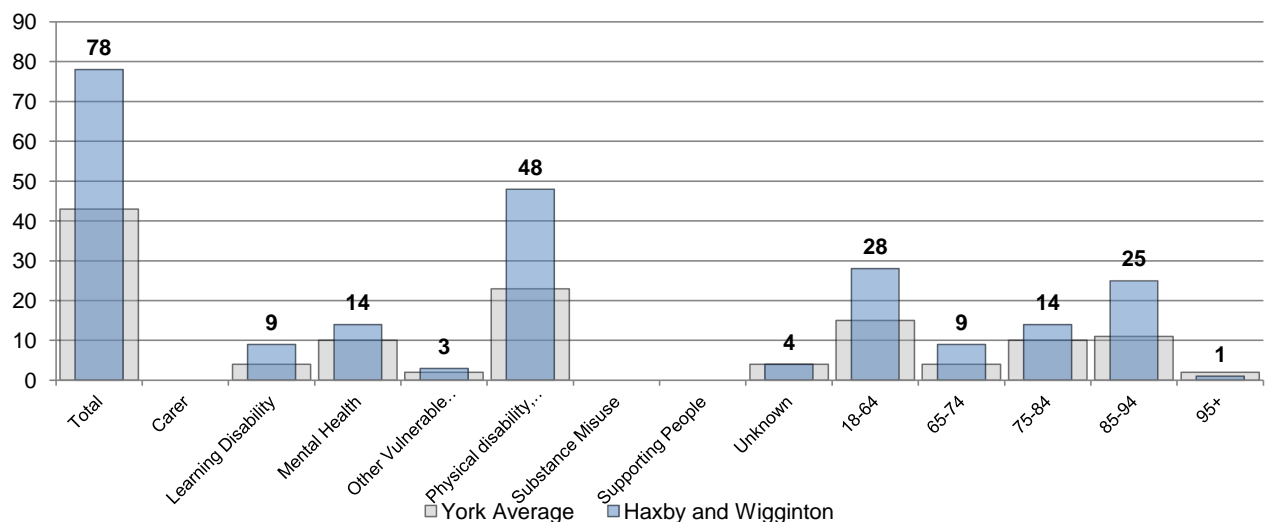
Source: Adults Social Care - 2014/2015

Assessment Notices (formerly Section 2 Notices) issued by Hospitals by Primary Client Type and Age



Source: Adults Social Care - 2014/2015

Adults Safeguarding Concerns by Client Type and Age



Source: Adults Social Care - 2014/2015

Haxby and Wigginton Ward Profile



Experian Groups
F Senior Security Elderly singles and couples, homeowners, comfortable homes, additional pensions above state, don't like new technology.
B Prestige Positions High value detached homes, married couples, managerial and senior positions, supporting students and older children, high assets and investments.
E Suburban Stability Older families, some adult children at home, suburban mid-range homes, 3 bedrooms, have lived at same address some years.
D Domestic Success Families with children, upmarket suburban homes, owned with a mortgage, 3 or 4 bedrooms, high internet use.
H Aspiring Homemakers Younger households, full-time employment, private suburbs, affordable housing costs, starter salaries.
N Vintage Value Elderly, living alone, low income, small houses and flats, need support.
A Country Living Rural locations, well-off homeowners, attractive detached homes, higher self-employment, high car ownership.
Experian Types
B05 Empty-Nest Adventure Couples aged 56 and over, children have left home, live in long-term family home, book holidays and tickets online, comfortable detached homes.
F24 Bungalow Haven Elderly couples and singles, own their bungalow outright, neighbourhoods of elderly people, may research online, like buying in store.
D16 Mid-Career Convention Married couples with kids, traditional suburbs, professional jobs, likely to have life cover, high proportion with mortgage.
E18 Dependable Me Mature singles, traditional suburbs, own lower value semis, have lived in same house 15 years, intermediate occupations.
F22 Legacy Elders Oldest average age of 78, mostly living alone, own comfortable homes outright, final salary pensions, low technology knowledge.
E20 Boomerang Boarders Adult children living with parents, respectable incomes, own mid-range semis or detached homes, older suburbs, search electricals online while in store.
H31 First-Rung Futures Younger couples and singles, own 2 or 3 bed semis and terraces, affordable suburbs, have lived there under 4 years, buy and sell on ebay.
B06 Bank of Mum and Dad Married couples aged 50-65, adult children at home, high salaries from senior positions, quality 4 bed detached homes, mortgage nearly paid off.
E19 Fledgling Free Older married couples, children have left home, respectable incomes, own suburban 3 bed semis, one partner often not working full-time.
F25 Classic Grandparents Elderly couples, traditional views, not good with new technology, most likely to have a basic mobile, long length of residence.